

SUMMARY OF STATE HERITAGE PLACE

REGISTER ENTRY

Entry in the South Australian Heritage Register in accordance with the *Heritage Places Act 1993*

NAME: St David's Anglican Church **PLACE NO.:** 26553

ADDRESS: Karna Country
492 Glynburn Road, Burnside
CT 5636/681 A48 FP141609 Hundred of Adelaide

STATEMENT OF HERITAGE SIGNIFICANCE

St David's Anglican Church, opened in 1963, is an outstanding example of late twentieth-century ecclesiastical Modern Movement architecture in South Australia. South Australian architect Stewart Game's innovative design is acclaimed for its dramatic, soaring saddle-shaped hyperbolic paraboloid roof, a feature which is unique in South Australian architecture. The visionary design of St David's Anglican Church represents a conspicuous demonstration of the acceptance of modern architectural styles in post-war South Australian church architecture.

RELEVANT CRITERIA (under section 16 of the Heritage Places Act 1993)

(e) it demonstrates a high degree of creative, aesthetic or technical accomplishment or is an outstanding representative of particular construction techniques or design characteristics

South Australian architect Stewart Game's design for St David's Anglican Church demonstrates an outstanding degree of creative, aesthetic and technical accomplishment, most notably in its use of an innovative saddle-shaped hyperbolic paraboloid roof, which is unique in South Australian architecture. Built by a congregation committed to a visionary design, St David's Anglican Church is a conspicuous demonstration of the acceptance of modern architectural styles in post-war South Australian church architecture.

St David's Anglican Church finely articulates many key attributes of late-twentieth century ecclesiastical architecture, namely:

- new structural materials facilitating a dramatic, soaring steel- and timber-framed hyperbolic paraboloid roof supported on concrete piers, which appears to 'float' above the worship space;

- clerestory windows, flooding the nave with daylight;
- windows with vertically-proportioned panes, incorporating coloured glazing;
- plain wall surfaces achieved with the use of undecorated Carey Gully stone and face brick;
- play of light from unseen or unexpected sources to create a special mood, realised through tall, narrow windows admitting raking daylight across the stone sanctuary and chapel walls;
- architectural 'distinctiveness' employed to denote the purpose of the building as a place of worship through its diamond-shaped plan and large, hyperbolic paraboloid roof and prefabricated reinforced concrete tower, the latter forming the shape of a cross;
- integration into community expressed through familiar, 'humble' materials such as brick, Carey Gully stone, and clear-finished timber, with domestic associations.

St David's Church has been critically acclaimed, both at the time of its construction and later by the architectural profession when reviewing the contribution of post-war ecclesiastical architecture to South Australia. In January 1964, St David's Anglican Church was favourably reviewed by John Chappel, a notable South Australian architect and architectural critic, who considered St David's Anglican Church to be 'dramatic and arresting.' Subsequently in 2011, the Australian Institute of Architects South Australian Chapter recognised St David's Church as a significant example of twentieth century South Australian architecture, one of only four extant post-war churches to be so recognised.

SITE PLAN

St David's Anglican Church
492 Glynburn Road, Burnside

PLACE NO.: 26553



St David's Anglican Church (CT 5636/681 A48 FP141609 Hundred of Adelaide)

Elements of heritage significance include (but are not necessarily limited to):




- Church building completed in 1963,
- Original exterior and interior materials and material finishes, including zinc roofing; external and internal face brick walls; rough squared random stone; marble; clear finished meranti and Queensland maple; and coloured glass,
- Original fixtures including original door and window hardware; original external and internal light fittings, including pew navigation lights; and ceiling louvres,
- fixed pews, altar, pulpit, lectern, and font,
- ecclesiastical artworks,
- original liturgical furniture.

Elements not considered to contribute to significance of place include (but are not necessarily limited to):

- External floodlights,
- Exit signs, wall-mounted television screens, security sensors, sanctuary spotlights and loudspeakers,
- Built-in narthex cabinetry,
- Non-original floor coverings,
- Entry ramp and rail.

N ↑

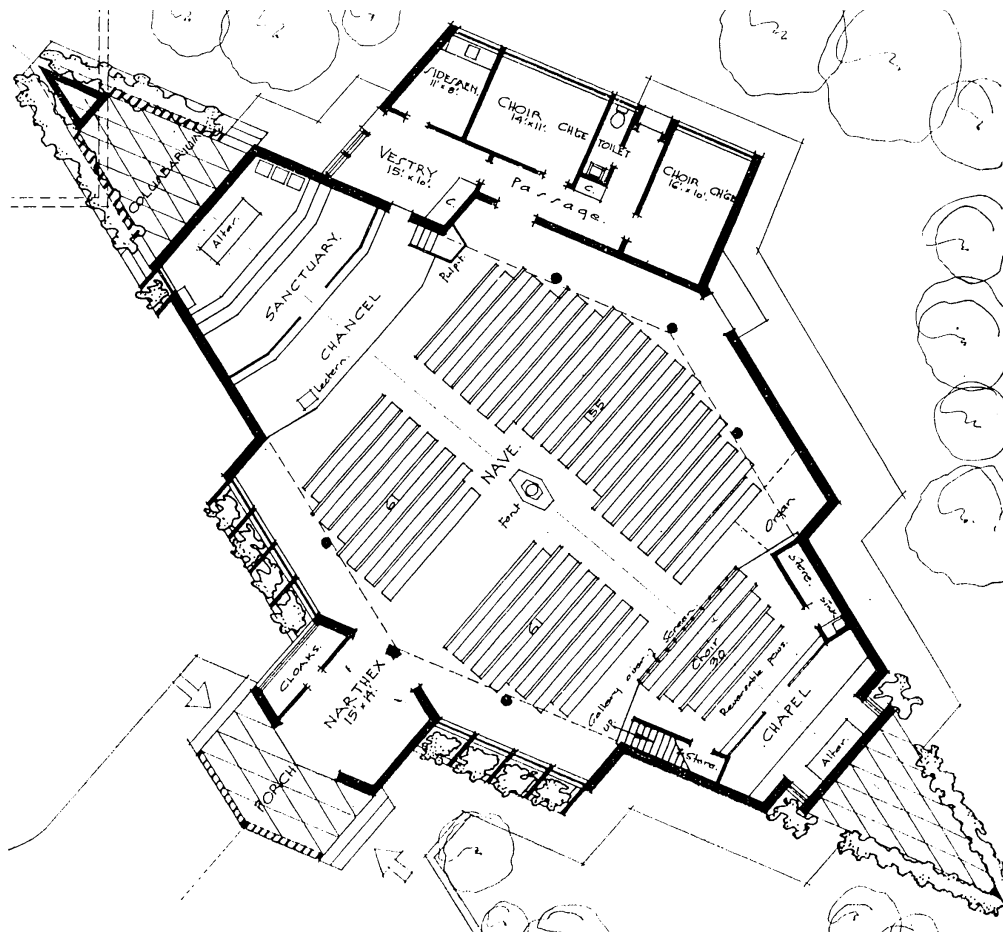
LEGEND

-  Parcel boundaries (Indicates extent of Listing)
-  Existing State Heritage Place(s) (solid line)
-  Outline of Elements of Significance for State Heritage Place

COMMENTARY ON THE LISTING

Description and notes with respect to a place entered in the South Australian Heritage Register in accordance with the *Heritage Places Act 1993*

Physical Description



St David's Anglican Church indicative floorplan

Source: *Burnside Parish Magazine*, June 1960 p. 4

St David's Anglican Church is a brick, stone, steel and reinforced concrete church with a rhombic (diamond-shaped) footprint and featuring a hyperbolic paraboloid roof. The main roof structure is comprised of 11 steel arches with Oregon timber rafters, supported on steel columns and reinforced concrete piers. A tall, reinforced-concrete tower with a triangular cross-section, forming the shape of a cross in elevation, supports the main roof at the northern end. A fabricated steel column, with a triangular cross-section, supports the main roof at the southern end. The main roof is decked in tongue-and-groove pinus radiata boards and clad in zinc sheet with standing seams.

Non-load-bearing brick and stone infill walls form most of the external envelope of the church, with extensive areas of steel and timber-framed glazing. Steel beams forming the structure of an internal mezzanine gallery are supported on steel columns bedded in load-bearing stone masonry. Floors throughout the church are reinforced concrete slabs.

The plan is oriented on an axis running north-east to south-west. Flat-roofed annexes enclosing side-aisles are arrayed along the eastern and western sides of the church. Additional flat-roofed annexes are located on the eastern side, comprising a vestry block, and the western side, covering the porch and narthex. An open-roofed columbarium is located under the overhanging main roof at the northern end.

The church exterior displays the following additional features:

- steel 'Kliplok' decking to flat roofs,
- salmon double-pressed textured face brick exterior walls,
- tongue-and-groove secret-nailed meranti-lined soffits to main roof eaves,
- paired meranti louvred vents to eave soffits at both ends,
- cement tile sills to window openings,
- tall window opening with integrated projecting reinforced concrete window shade at north-western corner,
- projecting reinforced concrete window shades to side aisle on western side,
- concrete blockwork screen to porch with hit-and-miss 'Edstone' hollow Besser block infill,
- tongue-and-groove meranti lining to porch soffit,
- hexagonal light fitting to porch soffit,
- steps on northern and southern sides of porch,
- welded steel handrails to porch steps on southern side,
- ramp to porch on northern side (not original fabric),
- rhomboid arrangement of contraction lines to porch and columbarium floor slabs,
- meranti entrance doors with decorative coffered fields,
- hit-and-miss brick wing walls with concrete capping to columbarium,
- memorial plaques to columbarium wing walls,
- open steel pergola roof to columbarium,
- recessed stretchers in grid pattern to eastern side brickwork,
- cruciform, steel-framed window pierced in southern end wall,
- sconce light on southern end wall,
- pink Angaston marble foundation stone in southern end wall,
- bell suspended from overhanging eave at southern end,
- timber-framed clerestory windows with cement tile sills to annexe on eastern side and to vestry block,
- low stone retaining wall on Glynburn Road, returned at both ends,
- blue plaque on retaining wall (not significant fabric).

The interior of the church is comprised of a main worship space, with adjoining narthex to the west, and vestries on the eastern side. The main worship space has a rhombic footprint and is comprised of a raised sanctuary at the northern end, Lady Chapel at the southern end with a gallery above and stairs on the western side, a nave with central baptismal font, and low-ceilinged aisles on the eastern and western sides. An elevated pulpit is also located at the northern end of the nave on the eastern side. The vestries are accessed from a door in the eastern side-aisle, adjacent to the pulpit.

Additional interior features include:

- fixed hardwood pews and integrated kneelers to nave, with red navigation lights in pew ends,
- tongue-and-groove, secret-nailed, meranti-lined main ceiling,
- paired meranti louvred vents and paired downlights on main ceiling centreline,
- rough squared random stone to sanctuary (northern) and Lady Chapel (southern) walls,
- double-pressed textured salmon face brick to other walls,
- rough squared random stone base, marble bowl and copper lid (object) to fixed baptismal font,
- large meranti cross set into sanctuary wall with rough adzed finish,
- flexible vinyl tiles to nave floor,
- welded steel stanchions to communion rail featuring chalice motif,
- chalice-shaped, spun stainless steel combined upright and downlight fittings, arranged singly in nave and grouped in threes on sanctuary wall,
- glazed double doors between narthex and nave,
- meranti board-and-batten lining to stud wall between nave and narthex, with built-in bookshelves,
- 'Pyrock' vermiculite ceilings to side aisles,
- square light fittings to aisle ceiling soffits,
- NACO 'Teleflex' window winders associated with opening windows,
- wall-mounted television screens in sanctuary (not original fabric),
- marble altar slab mounted on boxed marble piers, in turn standing on timber base,
- meranti and Queensland maple pulpit and pulpit hood,
- hammer-finish welded steel and meranti lectern,
- enclosed staircase to gallery,
- welded steel gate to gallery stairs, featuring chalice motif,
- pipe organ cases, pipes, console and mechanism installed in gallery,
- tongue-and-groove, secret-nailed, meranti-lined, flat narthex ceiling,
- milled steel dedication plaque on narthex wall,
- built-in cabinetry on narthex southern side (not significant fabric).

Interior features of the Lady Chapel include:

- altar from first St David's Anglican Church,
- meranti studwork screen and board-and-batten front balustrade lining,
- meranti board-and-batten wall lining,
- tongue-and-groove, secret-nailed meranti-lined, curved chapel ceiling,
- ceiling downlights,
- ambry in western wall, comprising Chubb wall safe with beaten copper door (see ecclesiastical artworks below),
- copper sanctuary lamp on western wall,
- bell rope with fluffy bell pull,
- studwork storerooms flanking chapel.

Liturgical furniture (objects) associated with the new church completed in 1963 includes:

- meranti and hammer-finished welded steel seats (x3) and associated meranti prayer desks (x3),
- meranti and hammer-finished welded steel sedilia (3 chairs on one frame),
- hardwood, brass, copper and welded steel altar candle-holders (x2),
- hardwood, brass, copper and welded steel sanctuary floor candle stand,
- copper baptismal font pitcher,
- meranti votive candle stand,
- meranti plinths (4 short plinths and 2 tall plinths).¹

The church interior contains the following ecclesiastical artworks:

- 'Suffer the Little Children,' stained glass window from first St David's Church, 1906, by Montgomery & Grimbley of Adelaide and Melbourne, in Lady Chapel window (built fabric),
- 'Pilate washing his hands at the trial of Jesus,' beaten copper panel by Voitre Marek, 1968, installed 1973, in Lady Chapel (object),
- 'St David Preaching,' beaten copper figure, 1968, installed 1973, by Voitre Marek, on western side aisle wall (object),
- eight coloured glass window compositions, 1985-1986, by Cedar Prest, in western side aisle windows, on the themes 'a simple psalm of praise' and 'the contrapuntal *Art of Fugue*' (built fabric),
- coloured glass window composition, 1989-1992, by Cedar Prest, installed in sanctuary windows (built fabric),
- beaten copper ambry door, 1975, by Voitre Marek, in Lady Chapel (fixture),
- sculptural installation 'Tidings of Comfort and Joy' in copper, 2012, by Pat Colley Brooks, mounted on eastern wall (fixture),
- small herald angel, cast aluminium figure, n.d., to top of organ case (fixture).

Elements of Significance:

Elements of heritage significance include (but are not necessarily limited to):

- Church building completed in 1963,
- Original exterior and interior materials and material finishes, including zinc roofing; external and internal face brick walls; rough squared random stone; marble; clear finished meranti and Queensland maple; and coloured glass,
- Original fixtures including original door and window hardware; original external and internal light fittings, including pew navigation lights; and ceiling louvres,
- Fixed pews, altar, pulpit, lectern, and font,
- Ecclesiastical artworks,
- Original liturgical furniture.

Elements not considered to contribute to significance of place include (but are not necessarily limited to):

- External floodlights,
- Exit signs, wall-mounted television screens, security sensors, sanctuary spotlights and loudspeakers,
- Built-in narthex cabinetry,
- Non-original floor coverings,
- Entry ramp and rail.

History of the Place

Please refer to the Assessment Report for the full history.

In 1957, the Ven Archdeacon John Raymond Bleby (b. 1913 – d. 2001) was appointed parish priest at Burnside. At this time the existing St David's Anglican Church, opened in 1887, was no longer large enough to accommodate the growing congregation. On Good Friday 1958, 200 people attended Matins (early morning prayer), exceeding the capacity of the church and making it clear that a new, larger building was necessary.

St David's Church² congregation commenced its first Wells-style stewardship (planned giving) campaign in November 1958, in part to raise funds toward a new church. The campaign was highly successful, with £40,805 pledged over three years and £42,528 collected at the end of that period.³ As the proposed church was registered as a war memorial, donations to the building fund were tax-deductable.

In August 1959, a small subcommittee of the St David's Church building committee visited various new suburban churches to begin formulating a design brief. Places visited included the Catholic Church of the Holy Name, St Peters (Michelmore, Roeger and Russell, 1959, SHP 26519), Trinity Methodist Church, Glenelg (Eric von Schramek, 1959, LHP), and All Saints Anglican Church, Colonel Light Gardens (Lawson Cheesman Doley and Partners, 1959).

Meanwhile, St David's Church began negotiating a 'three-way exchange' between the Church, the City of Burnside and the Education Department to secure the Corporation's former pound yard, adjoining the existing Church property to the south, for the purpose of building a new church on the site. These negotiations were successful and the agreement was finalised in May 1960.⁴

In December that year, the Parish Council considered appointing Stewart Game architect for the new church.⁵ To gain a better understanding of Game's architectural credentials, Rev Bleby consulted architects Gavin Walkley and Dean Berry, and one of Game's previous clients.⁶ Bleby expressed reservations about Game's appointment, which he considered a 'grave risk' in light of Game's ecclesiastical experience, which was then limited to 'the reconstruction of bombed churches.'⁷ Bleby's preferred architect for the new project was Berry, who possessed considerable experience designing Anglican churches.

Nevertheless, Stewart Game was appointed architect for the project and presented with an initial brief on 23 December 1959. Key requirements included:

- a maximum expenditure of £22,000,
- seating accommodation for 300 in pews, with additional space to seat a total of 450 in chairs on special occasions, and choir stalls for 40 persons,

- facilities including toilets for men and women; separate robing rooms for clergy; choir men and choir women; a warden's and sidesmen's room; and a parishioner's cloakroom,
- provision for ventilation and heating facilities,
- a pipe organ,
- plate glass doors between narthex and nave,⁸ 'so that late arrivals may see to what stage the service has progressed before opening the doors.'⁹

Rev John Bleby also stipulated there must be 'no hanging lights,' as he had seen 'so many modern churches' in Australia and Britain 'ruined by a forest of hanging lights and chandeliers.'¹⁰

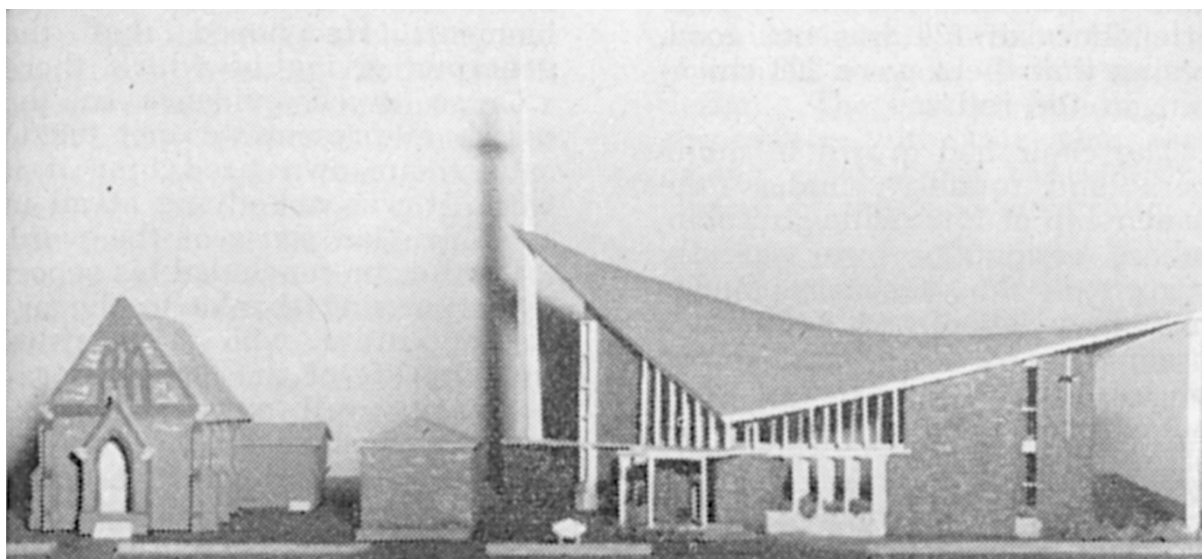
The rhomboid floorplan of the new St David's Anglican Church was driven by practical concerns rather than post-war liturgical reform. Around the time of Game's appointment but distinct from his official brief, Bleby provided Game with an informal sketch of his 'ideas for the ground-plan' of the new church, instructing Game 'to make use of them – or any part of them – or not, as you think fit.'¹¹ Bleby perceived a tendency for Anglican congregations to fill the back pews first while also often leaving the front pews unoccupied. To overcome this tendency, Bleby sketched a plan with short front pews, which he considered 'a waste of space,' and short back pews, to limit the number of parishioners seated at the back of the church. Bleby enclosed his proposed seating plan in a diamond-shaped envelope arising naturally from the arrangement of pews.¹² Bleby's plan also deliberately:

- reduced the separation between sanctuary and nave by placing the organ and choir stalls elsewhere in the church,
- made the altar free-standing to make it 'stand out as the focal point',
- placed the font in the centre of the church, allowing baptisms to take place 'in the midst of the family of God,' and close to the entrance, both 'to symbolise the entry of the newly baptised into the family of the church,' emphasise baptism as one of the two dominical sacraments, and
- provided concavities on the sides of the font to enable 'a portly priest to stand upright when baptising instead of leaning over the font.'¹³

On 9 May 1960, Game attended the St David's Church annual vestry meeting, presenting two schemes for the proposed church. The schemes comprised an 'economy structure' with an estimated cost of £27,000 and a rhomboid or diamond-shaped church with a hyperbolic paraboloid roof, at an estimated cost of £32,000.¹⁴ To Bleby's astonishment, Game had adapted the diamond-shaped or rhomboid church from his sketch plan 'almost in toto,' while the elevation and innovative roof shape of the proposal were conceived by Game alone.¹⁵ Game also presented an elaborate scale model of the rhomboid church, hoping to convince the vestry meeting to choose the more expensive scheme, which was ultimately preferred by 'a large majority'.¹⁶

The steel-framed hyperbolic paraboloid roof, sweeping upwards towards a large cross-shaped tower, was designed to allow the new church to 'dominate' the site, 'without carrying the whole building to an enormous height.'¹⁷ The roof was in turn supported on a structure of concrete piers, with brick and glass infill forming the external envelope of the church. This structure allowed the roof to 'float' over the worship space, with the main ceiling ultimately lined in the same tongue-and-groove, secret-nailed meranti timber as the external eave soffits, creating the illusion of an uninterrupted hyperbolic paraboloid surface.

The axis of the church was placed diagonally on the site, making best use of the available space.¹⁸ Game's design provided side aisles to allow processions, and offered permanent seating for 310, with space for an additional 140 seated in chairs in the side aisles and 65 in a gallery. Despite the greatly-increased seating capacity, the distance from the back seat of the choir to the altar was only nine feet greater than that in the first church. Game also designed custom-made sanctuary furniture for the church.



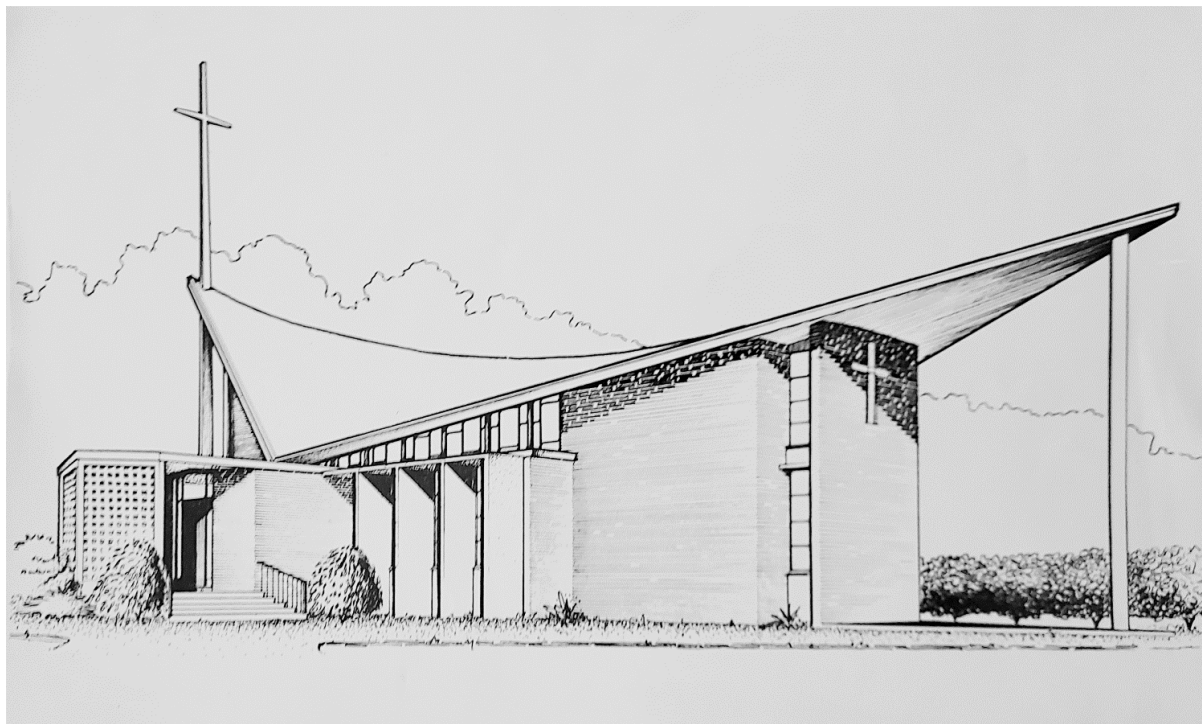
Architect's model of proposed St David's Anglican Church, June 1960

Source: *Burnside Parish Magazine*, June 1960 p. 5

The creation of Game's design for the new St David's Anglican Church coincided with international interest in hyperbolic paraboloid forms, particularly in the United States. Notably, hyperbolic paraboloid structures dominated proceedings at the 1962 World Conference on Shell Structures in San Francisco and it is likely Game's design was informed by these international trends.¹⁹

On 3 August 1960, Bishop Reed wrote to Rev Bleby giving his 'general approval to the whole scheme', noting that the new church would be 'undoubtedly [...] striking and modern,' but nevertheless, 'very pleasing.'²⁰ The following year on 15 March, the Standing Committee of the Synod of the Diocese of Adelaide approved expenditure of up to £38,000 on the erection of the new St David's Anglican Church.²¹ Game

provided St David's Church with drawings, specifications and a bill of quantities and tenders were called between 25 May and 26 June 1961.²² Seventeen contractors registered tenders,²³ the lowest of which was Queenstown-based F. Fricker Limited for £43,840, including fees. However, this cost exceeded the maximum expenditure authorised by the Standing Committee.



Proposed St David's Anglican Church, drawing by Stewart Game, c.1962

Source: St David's Church Archive

To bring the project within budget, Game made changes to the proposed design. Most notably, local Carey Gulley quarry stone was substituted with brick, except for two internal walls;²⁴ the height of the tower was reduced; the overall height of the nave was reduced by four feet; and a 'patent plastic' roof was substituted for the originally proposed copper. The gallery was also omitted from the design, although structural steelwork associated with the gallery remained, allowing a gallery to be installed later when funds became available.²⁵

Other minor features omitted from the design to save costs included the Mintaro slate window sills (concrete tiles substituted); terrazzo entrance porch (concrete substituted), pressed cement columbarium (patterned brick substituted); external exposed aggregate panels; built-in planter boxes; framed mural panels; and a narthex window.²⁶ While making revisions, Game strongly resisted a suggestion to simplify the roof, arguing that any change to its shape would 'necessitate a complete redesign' of the church.²⁷

On 1 March 1962, F. Fricker Limited advised the revised design could be built for £36,850.²⁸ Following further negotiation which resulted in the substitution of zinc instead

of plastic roofing and the inclusion of other sundries, F. Fricker Limited signed a contract to build the new church for £38,801 on 8 May. The following week, Game submitted a revised project, including professional fees, bringing the total cost of the project to £42,221.10, and on 14 May the Standing Committee of the Synod of the Diocese of Adelaide approved an increase in expenditure of £42,000,²⁹ evidently allowing construction to proceed despite the small excess cost of £221.10.

Site works commenced soon afterwards, and the large precast, reinforced concrete tower arrived on 31 August.³⁰ On 9 September 1962, the foundation stone of the new St David's Anglican Church, in pink Angaston marble, was laid by C. W. L. Muecke.³¹

During early 1963, construction was held up 'for some time' due to a lack of suitable bricks.³² Later, as the building neared completion in October, an anonymous gift of £1,000 allowed a gallery to be installed in the church as originally planned.³³

A stained-glass window from the first St David's Church and the original altar were installed in the chapel of the new St David's Church.³⁴ Meanwhile, a second-hand organ, acquired from the Church of the Epiphany at Crafers,³⁵ was installed in the eastern side aisle.

While committed to Game's vision, the St David's congregation and clergy found the experience of building such an architecturally innovative church exhausting, and as the project neared its end, Bleby confided in a parishioner: 'personally, I hope that I never have to have any dealings with architects again.'³⁶ The new St David's Church was finally opened and dedicated as a war memorial on 9 November 1963,³⁷ at a final cost of £42,748.15.8 including electrical fittings and sanctuary furniture.³⁸ St David's Anglican Church was consecrated on 23 April 1967, following the repayment of all debts associated with construction of the church.

South Australian architect and architectural critic John Chappel, writing for his regular column in the *Adelaide Advertiser* in January 1964, considered the design of the new St David's Anglican Church, and in particular its roof shape, to be 'dramatic and arresting.' Chappel also noted the church's extensive use of natural material finishes and the natural, indirect lighting of the sanctuary.³⁹

In June 2011, the Australian Institute of Architects' (AIA) National Heritage Taskforce, comprising representatives from each State and Territory, completed a list of Nationally Significant 20th Century Architecture compiled through a process of peer review within the Taskforce. St David's Anglican Church was one of only five post-war churches to feature in this list. Four of these churches remain, following the demolition of the former Maughan Methodist Church in 2016.

In 1973, two beaten-copper panels by Voitre Marek, namely *St David Preaching* and *Pilate washing his hands at the trial of Jesus*, were added to the western aisle and the chapel respectively. Both panels were created in 1968. Later, in 1975, a Chubb wall

safe was installed in the chapel wall, creating an aumbry, in turn faced with another beaten-copper panel, also created by Voitre Marek.

In October 1977, the organ was relocated from the eastern side aisle to the gallery. Later, during the 1980s, the organ was in turn replaced by a larger organ acquired from St Paul's Anglican Church, Pultney Street.

During the 1980s and early 1990s, South Australian glass artist Cedar Prest created three stained and coloured glass works for St David's Church. These works included four memorial windows gifted for glazier Fred Hammill on the theme 'a simple psalm of praise' (1985), four further windows on the theme 'the contrapuntal *Art of Fugue*' (1986), both sets in the western side aisle, and sanctuary windows (1989-1992).⁴⁰ Later, in 2012, a large sculpture by local artist Patricia Ann Lorraine (Pat) Colley-Brooks, named *Tidings of Comfort and Joy*, was installed on the east wall of the nave.



St David's Anglican Church

Source: DEW Files, 22 March 2024

Chronology

Year Event

- 1887 8 May, the first St David's Anglican Church is completed and dedicated.
- 1957 Ven Archdeacon John Raymond Bleby is appointed parish priest at Burnside.
- 1958 Good Friday, 200 people attend Matins at the first St David's Anglican Church.
- November, St David's Church conducts its first Wells-style planned giving campaign, in part to raise funds towards building a new church. £40,805 is pledged over three years.**
- 1959 August, a small subcommittee of the St David's Church building committee visit various suburban churches to begin formulating a design brief for a new church.
- 23 December, Stewart Game of Game & Gilbert, Architects, is appointed architect for the new St David's Anglican Church and presented with an initial brief. Around this time Rev Bleby presents Game with a sketch of his 'ideas for the ground-plan' of a new church.**
- 1960 May, St David's Church successfully negotiates to acquire the former Burnside Corporation's former pound yard, for the purpose of building a new church on the site.
- 9 May, Stewart Game attends the St David's Church annual vestry meeting, presenting two schemes for a proposed future church. The attendees prefer the more ambitious, expensive scheme by 'a large majority'.**
- 3 August, Bishop Reed writes to Rev Bleby giving his 'general approval' to the design of the proposed church.**
- 1961 15 March, the Standing Committee of the Synod of the Diocese of Adelaide approves expenditure of up to £38,000 on the erection of the new St David's Anglican Church.
- 25 May, tenders called for erection of the new St David's Anglican Church.**
- 26 June, tenders close for erection of the new St David's Anglican Church. The lowest tender of £43,840 including fees is from Queenstown-based F. Fricker Limited. Stewart Game subsequently revises the design of the proposed church to reduce the overall cost, excluding features such as a copper-clad roof and gallery seating.**
- 1962 1 March, F. Fricker Limited advises the revised design for the new St David's Anglican Church may be built for £36,850.
- 8 May, F. Fricker Limited signs a contract to build the new St David's Anglican Church for £38,801, including a zinc roof and other additional sundries.**

- 14 May, the Standing Committee of the Synod of the Diocese of Adelaide approved an increase in expenditure of £42,000, allowing construction of the new St David's Anglican Church to proceed.**
- 31 August, the large precast, reinforced concrete tower for the new St David's Anglican Church arrives on site.**
- 9 September, foundation stone of the new St David's Anglican Church laid by C. W. L. Muecke.**
- 1963** Construction of the new St David's Anglican Church is held up 'for some time' owing to a shortage of bricks.
- October, an anonymous gift allows installation of a gallery in the new St David's Anglican Church as originally designed.**
- 9 November, St David's Church is opened and dedicated at a final cost of £42,748.15.8 including electrical fittings and sanctuary furniture.**
- 1967** **23 April, the new St David's Anglican Church is consecrated following repayment of all debts associated with construction of the church.**
- 1973** **Two beaten-copper panels, created by Voitre Marek in 1968, are installed in St David's Anglican Church.**
- 1977** **October, the St David's Anglican Church organ is relocated from the eastern side aisle to the gallery.**
- 1980s** **St David's Anglican Church organ is replaced with a larger organ acquired from St Paul's Anglican Church, Pultney Street.**
- 1985-** **Eight coloured glass memorial windows by Cedar Prest installed in western**
1986 **aisle side windows.**
- 1989-** **Coloured glass by Cedar Prest installed in sanctuary window.**
- 1992**
- 1995** **Concrete access ramp added to porch.**
- 2011** **June, St David's Anglican Church is recognised on the Australian Institute of Architects South Australian Chapter Nationally Significant Twentieth Century Architecture list.**
- 2012** ***Tidings of Comfort and Joy*, a large sculpture by Pat Colley-Brooks, is installed in the eastern wall of the nave.**

References

Books and Chapters

- Chris Burns, *Liturgy, Community, Modernity: postwar places of worship in South Australia 1945 – 1990* (2020) Adelaide SA: Architecture Museum, University of South Australia
- David Hilliard, *Godliness and Good Order: a history of the Anglican Church of South Australia* (1986) Netley SA: Wakefield Press
- Michael Page, *Sculptors in Space: South Australian Architects 1836-1986* (1986) Adelaide: The Royal Australian Institute of Architects (Adelaide Chapter)
- St David's Church, Burnside, *St David's Church, Burnside: Centenary 1887 – 1987* (1987) Burnside SA: St David's Church
- Josie Wilkinson, *The Silver Anniversary of Our Lady of Mount Carmel Church 1960 – 1985* (1985) Pennington SA: Our Lady of Mount Carmel Church

Reports and Theses

- Chris Burns, "Postwar Places of Worship in South Australia 1945 – 1990, Report for the Environment and Water South Australian Built Heritage Research Project 2018-2019" (2019) Adelaide: Architecture Museum, University of South Australia

Newspapers

- Burnside Parish Magazine* June 1960 pp. 4-5
- Burnside Parish Magazine* August 1961 p. 4
- Burnside Parish Magazine* November-December 1961 p. 2
- Burnside Parish Magazine* December 1962 p. 5
- Burnside Parish Magazine* February 1963 p. 4
- Burnside Parish Magazine* August 1963 p. 1
- "Parish and Personal" in *Adelaide Church Guardian*, October 1963 p. 26
- John Chappel, "New Church Has Striking Design" in *Advertiser* 2 January 1964 p. 10

Websites

- Cedar Prest, Architectural Glassworks http://www.cedarprest.com.au/glassworks_expo/ accessed via the Wayback Machine
- J. R. Warner, 'George Wyndham Kennion (1845-1922)' in *Australian Dictionary of Biography* <https://adb.anu.edu.au/biography/kennion-george-wyndham-3946>
- St David's Anglican Church, About Us <https://stdavidsburnside.com.au/about-us/>

Archival

- Building Committee Records, St David's Church Archive
- B 15174 SLSA <https://collections.slsa.sa.gov.au/resource/B+15174>
- CT 2707/125

SITE DETAILS

St David's Anglican Church
492 Glynburn Road, Burnside

PLACE NO.: 26553

DESCRIPTION OF PLACE:	Single-storey steel, brick and reinforced concrete church with hyperbolic paraboloid roof
DATE OF CONSTRUCTION:	1962 – 1963
REGISTER STATUS:	Identified 13 August 2020 Nominated 30 May 2023 Provisionally entered 27 June 2024 Confirmed 14 November 2024
LOCAL HERITAGE STATUS:	N/A
CURRENT USE:	Anglican place of worship 1963 – present
ARCHITECT:	Stewart Game, Game & Gilbert Architects 1959 – 1963
BUILDER:	F. Fricker Ltd, Builders and Contractors, Queenstown 1962 – 1963
LOCAL GOVERNMENT AREA:	City of Burnside
LOCATION:	Street No.: 492 Street Name: Glynburn Road Town/Suburb: Burnside Post Code: 5066
LAND DESCRIPTION:	Title CT 5636/681 A48 FP141609 Reference: Hundred: Adelaide

PHOTOS

St David's Anglican Church
492 Glynburn Road, Burnside

PLACE NO.: 26553

All images in this section are from DEW Files and were taken on 20 March 2024, unless otherwise indicated.



St David's Anglican Church, exterior from Glynburn Road



St David's Anglican Church, exterior, rear view

PHOTOS

St David's Anglican Church
492 Glynburn Road, Burnside

PLACE NO.: 26553



Interior, view of nave and sanctuary from gallery



Interior, view of nave towards gallery

PHOTOS

St David's Anglican Church
492 Glynburn Road, Burnside

PLACE NO.: 26553



Interior, view of nave showing sculpture installation 'Tidings of Comfort and Joy' by local artist Pat Colley-Brooks



Interior, view of chapel, note altar and stained glass window from first church

PHOTOS

St David's Anglican Church
492 Glynburn Road, Burnside

PLACE NO.: 26553



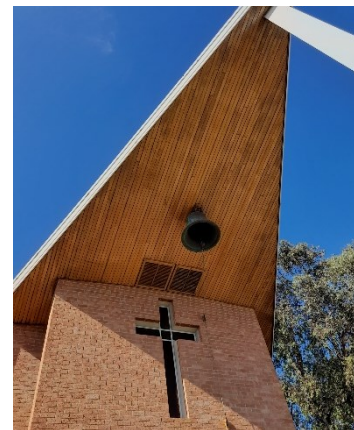
Exterior of columbarium



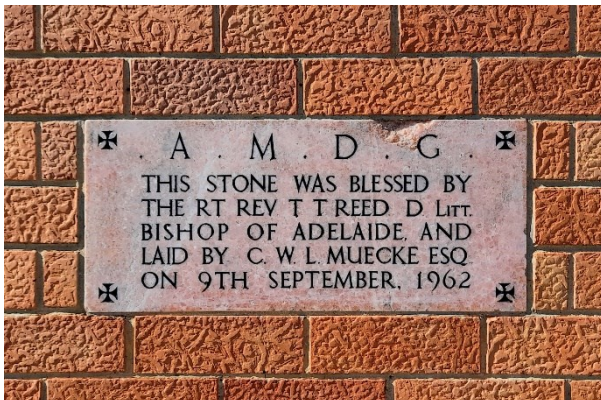
Interior of columbarium



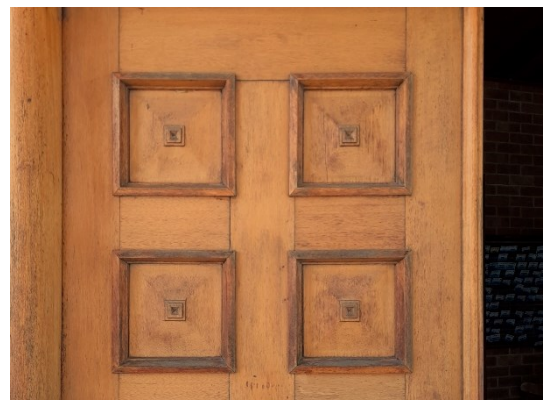
Porch blockwork screen



Bell and cruciform window under main roof



Foundation stone showing typical brick texture



Main door detail

PHOTOS

St David's Anglican Church
492 Glynburn Road, Burnside

PLACE NO.: 26553



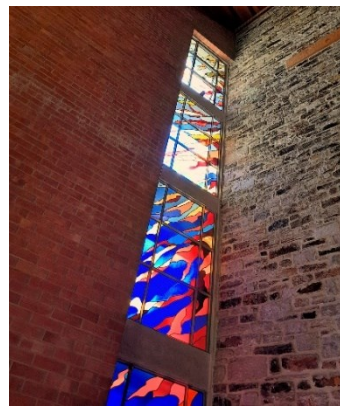
Baptismal font



Beaten-copper wall panel of St David by
Voitre Marek



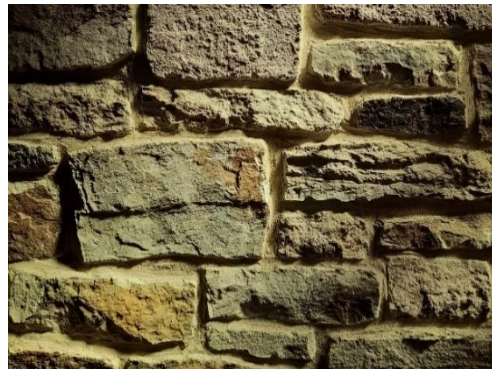
Coloured glass memorial windows in western
aisle by Cedar Prest



Sanctuary window with coloured glass by
Cedar Prest



War memorial dedication plaque



Typical Carey Gulley stone detail

¹ Specific details of materials, features and fittings sourced from Specification No. 4 Job No. 163/59 June 1961, Specification of Work for the erection of a New Church at Burnside Road, Burnside for St. David's Church, Game & Gilbert Architects, and Specification No. 3 Job No. 163/59 February 1962, Specification of Work for the erection of a New Church at Burnside Road, Burnside for St. David's Church, Game & Gilbert Architects, Building Committee Records, St David's Anglican Church

² The ecclesiastical organisation was known as St David's Church, while for the purposes of this assessment, the building is called St David's Anglican Church.

³ St David's Church, Burnside, *St David's Church, Burnside: Centenary* p. 4; the second planned giving program was less successful, with only £29,754 pledged by December 1961; see *Burnside Parish Magazine*, November-December 1961 p. 2

⁴ CT 2707/125

⁵ While not a parishioner of St David's Church at that time, Game and his wife Betty subsequently moved to the church in late 1962 (*Burnside Parish Magazine* December 1962 p. 5; St David's parishioner and architect A. J. S. Chinnery was excluded from consideration due to his membership of the church; letter from P. J. Ward, Parish Secretary to A. J. S. Chinnery dated 17 March 1960, Building Committee Records, St David's Church Archive

⁶ Previous client Mrs. Donald Simpson recommended Game as a domestic architect but had 'doubts as to whether he could design a church,' while Walkley considered Game 'capable' but commented, 'I wouldn't be enthusiastic.' Walkley believed there to be 'two dozen architects in South Australia of equal standard', letter from Rev Bleby to Gordon Pridham dated 10 December 1959, Building Committee Records, St David's Church Archive

⁷ Letter from Rev Bleby to Gordon Pridham dated 10 December 1959, Building Committee Records, St David's Church Archive

⁸ Letter from G. J. B. Pridham for St David's Church to Stewart Game Esq dated 23 December 1959, Building Committee Records, St David's Church Archive

⁹ *Burnside Parish Magazine* June 1960 p. 4

¹⁰ Letter from Rev Bleby to 'Conrad', 24 February 1994, Building Committee Records, St David's Church Archives

¹¹ Letter from Rev Bleby to 'Conrad'

¹² Letter from Rev Bleby to 'Conrad'

¹³ Letter from Rev Bleby to 'Conrad'; notably, the altar was not made free-standing to allow the priest to face the congregation during Holy Communion, as this was a position 'almost unheard of' during the period in question.

¹⁴ Handwritten minutes of vestry meeting, undated, c.1962, Building Committee Records, St David's Church Archives

¹⁵ Letter from Rev Bleby to 'Conrad', 24 February 1994

¹⁶ Handwritten minutes of vestry meeting, undated, c.1962

¹⁷ *Burnside Parish Magazine* June 1960 p. 5

¹⁸ St David's Anglican Church, About Us <https://stdavidsburnside.com.au/about-us/>

¹⁹ Chris Burns, "Postwar Places of Worship in South Australia 1945 – 1990" p. 88

²⁰ Letter from the Bishop of Adelaide to Rev Bleby dated 3 August 1960, Building Committee Records, St David's Church Archives

²¹ Handwritten chronology, undated, Building Committee Records, St David's Church Archives

²² Handwritten chronology, undated

²³ *Burnside Parish Magazine* August 1961 p. 4

²⁴ St David's Church, Burnside, *St David's Church, Burnside: Centenary* p. 8; St David's Anglican Church, About Us

²⁵ Letter from Stewart Game to the Wardens, St David's Church, dated 1 March 1962, Building Committee Records, St David's Church Archives

²⁶ Letter from Game & Gilbert Architects re: amendments, undated c.1961, Building Committee Records, St David's Church Archives

²⁷ Letter from Stewart Game to the Wardens, St David's Church dated 14 April 1962, Building Committee Records, St David's Church Archives

²⁸ Handwritten chronology, undated

²⁹ Handwritten chronology, undated

³⁰ B 15174 SLSA <https://collections.slsa.sa.gov.au/resource/B+15174>

³¹ Inscription, St David's Anglican Church foundation stone

³² *Burnside Parish Magazine* February 1963 p. 4

³³ "Parish and Personal" in *Adelaide Church Guardian*, October 1963 p. 26; see also *Burnside Parish Magazine* August 1963 p. 1

³⁴ St David's Anglican Church, About Us

³⁵ St David's Church, Burnside, *St David's Church, Burnside: Centenary* p. 4

³⁶ Letter from Rev Bleby to Miss Marchant, 12 October 1963, St David's Church Archive

³⁷ St David's Church, Burnside, *St David's Church, Burnside: Centenary* p. 4

³⁸ New St David's Church, Burnside. Final Statement of Accounts, November 1964, Building Committee Records, St David's Church Archive

³⁹ John Chappel, "New Church Has Striking Design" in *Advertiser* 2 January 1964 p. 10

⁴⁰ Cedar Prest, Architectural Glassworks http://www.cedarprest.com.au/glassworks_expo/ accessed via the Wayback Machine