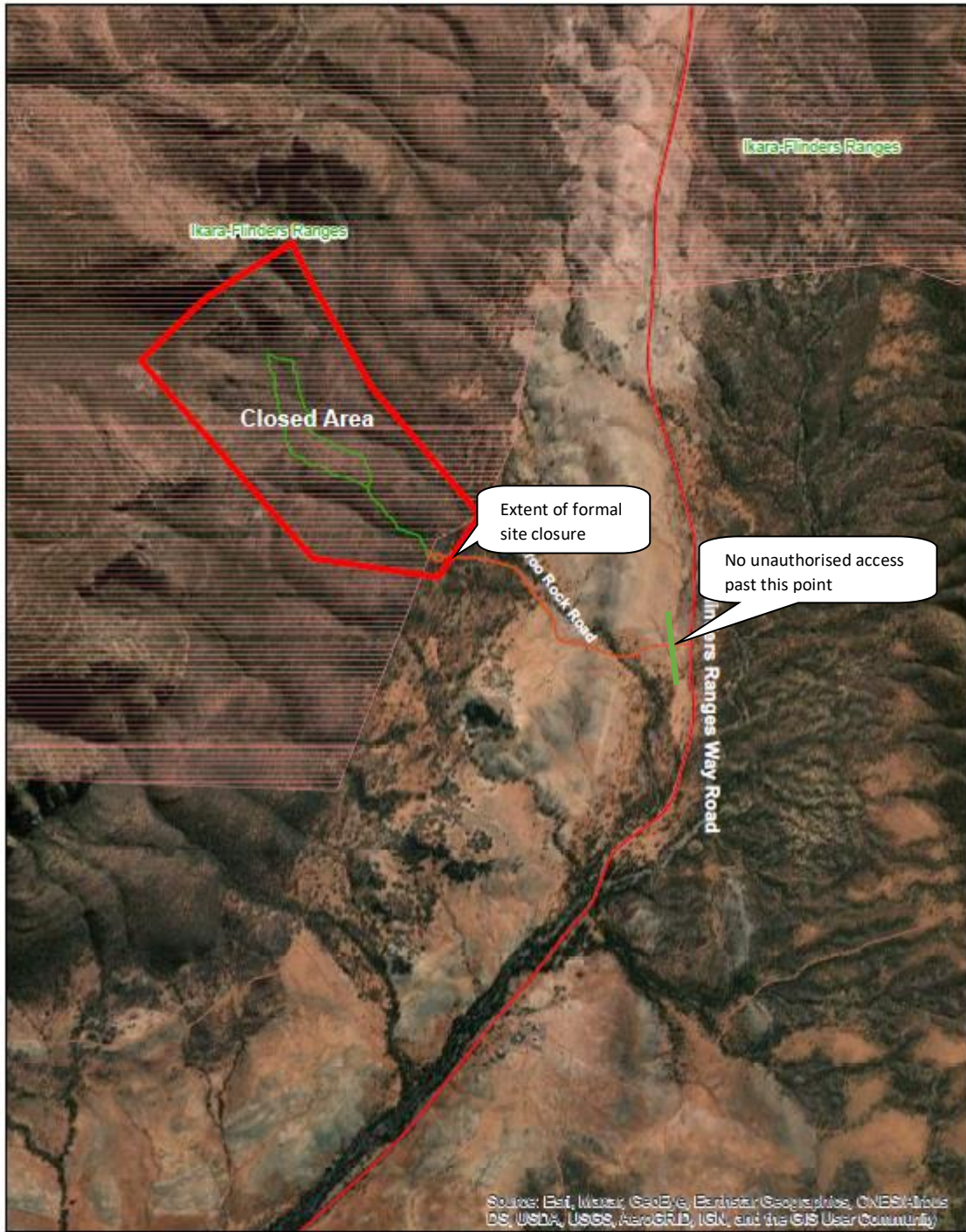
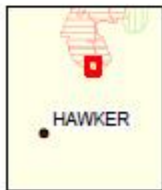


Ikara-Flinders Ranges National Park Arkaroo Rock Closure

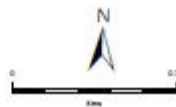


Source: Esri, Maxar, GeoEye, Earthstar Geographics, CNES/Airbus DS, USDA, USGS, AeroGRID, IGN, and the GIS User Community



Produced by Project and Asset Service
Department for Environment and Water
57-60 Waymouth Street, Adelaide SA 5000
http://www.parks.sa.gov.au

Date Source: 02/04/2021
Compiled: 9 June 2021
Projection: Lambert Conformal Conic
Datum: Geocentric Datum of Australia, 1984



© Copyright Department for Environment and Water 2021.
All Rights Reserved. All other content remains the property of their respective owners. For the full and complete disclaimer, please refer to the copyright or terms and conditions of the data providers from the appropriate data providers.

Although every effort has been made to ensure the accuracy of the information depicted, the Department does not accept any responsibility for any omissions, errors or delays in the data, or any information appearing in a notice or for any purposes, and hereby warrants no liability for loss or damage arising from reliance upon the information displayed.

