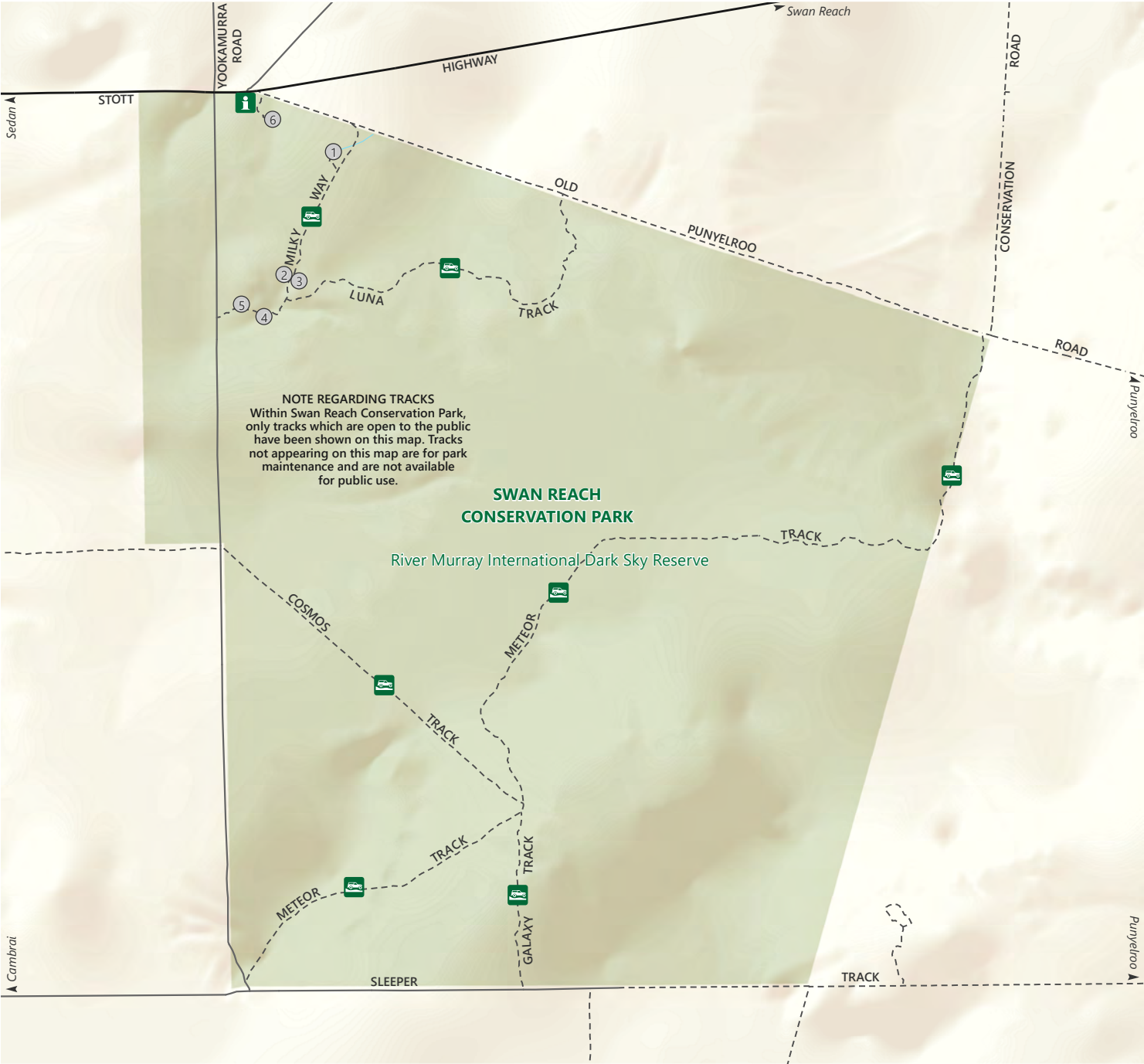


Swan Reach Conservation Park



- Sealed road
- Unsealed road
- Track
- 4WD access
- Information
- Campsite number
- Swan Reach Conservation Park

River Murray International Dark Sky Reserve covers more than 3200 square kilometres in the Mid Murray district of South Australia. The 'Core Site' of the reserve is located within the Swan Reach Conservation Park - an area of 2000 hectares of untouched mallee bushland.



DEW does not guarantee that this map is error free. Use of the map is at the user's sole risk and the information contained on the map may be subject to change without notice. Cartography by DEW, Mapland - 2025

Visit parks.sa.gov.au
Get the Avenza PDF Maps app to use park maps on your phone.
For more information, contact:
Department for Environment and Water
E: parks@sa.gov.au
P: 08 8207 7700