

# Onkaparinga River National Park - Western End

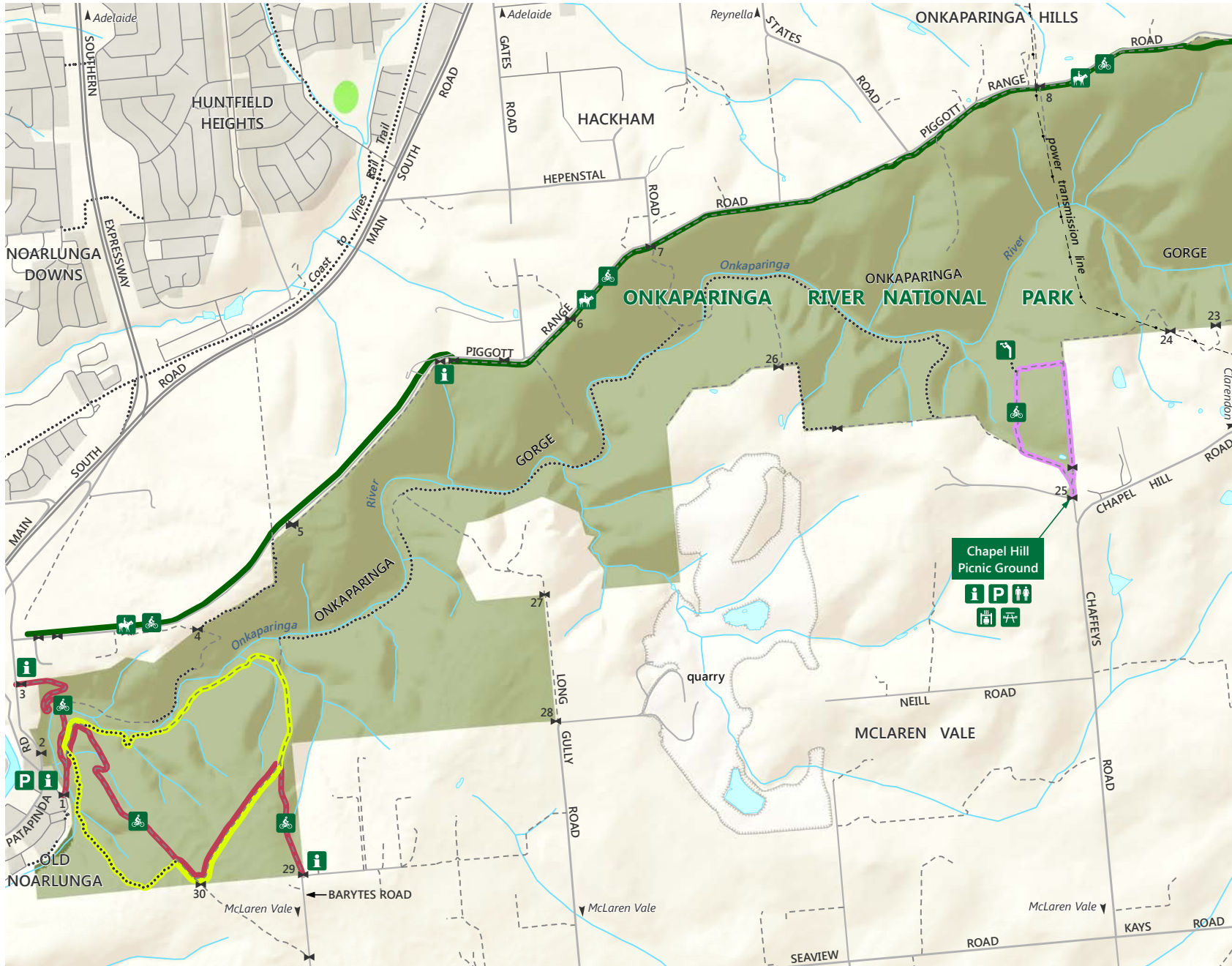
## Walking Trails



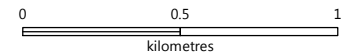
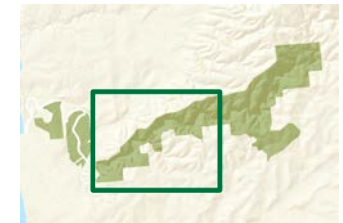
Government of South Australia



National Parks South Australia



- Sealed road      — Unsealed road
- - - Vehicle track      ..... Trail
- Only authorised vehicles permitted in park
- Old Noarlunga Hike
- Old Coach Link Trail
- Chapel Hill Lookout Trail
- Tom Roberts Horse Trail
- Walkers are permitted on all trails
- Onkaparinga River National Park
- Built-up area
- Information
- Cycling permitted
- Parking
- Horse riding permitted
- Toilets
- Picnic facilities
- Lookout
- BBQ facilities
- Gate with number



[parks.sa.gov.au](http://parks.sa.gov.au)

DEWNR does not guarantee that this map is error free. Use of the map is at the user's sole risk and the information contained on the map may be subject to change without notice. Cartography by DEWNR, Mapland - 2017

Use this map on your mobile: [search Avenza PDF Maps](#)

**For more information contact:**  
 Natural Resources Centre Willunga  
 T: 08 8550 3400  
[www.naturalresources.sa.gov.au](http://www.naturalresources.sa.gov.au)  
[/adelaidentoftyranges](https://twitter.com/adelaidentoftyranges)