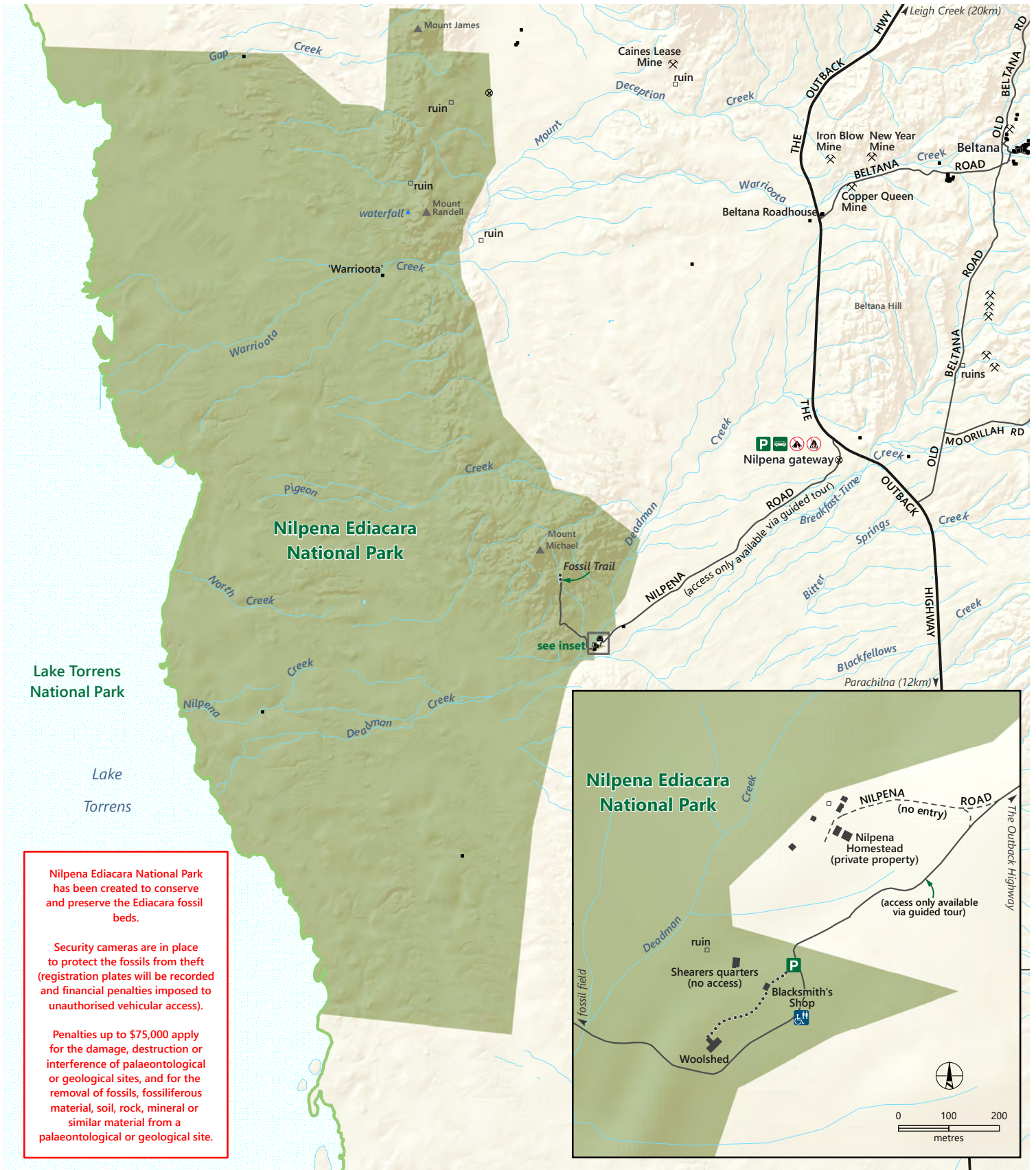


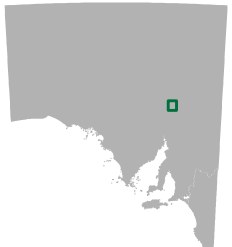
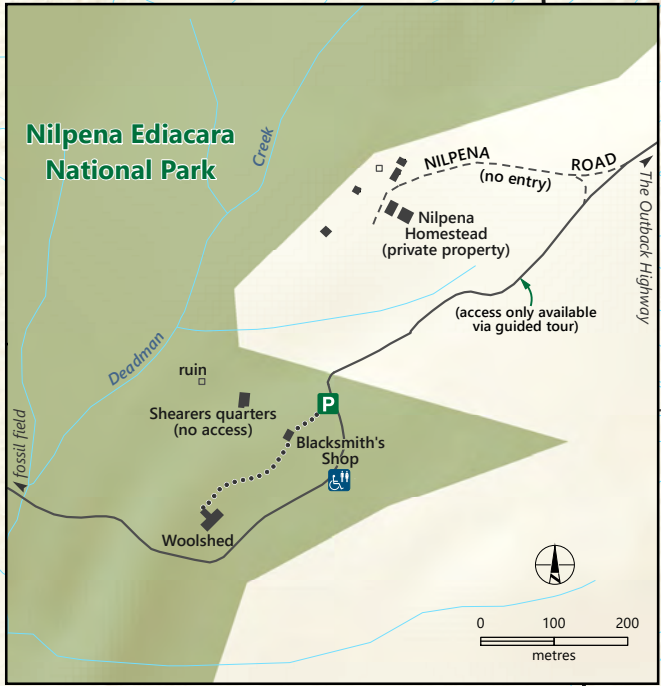
Nilpena Ediacara National Park



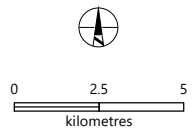
Nilpena Ediacara National Park has been created to conserve and preserve the Ediacara fossil beds.

Security cameras are in place to protect the fossils from theft (registration plates will be recorded and financial penalties imposed to unauthorised vehicular access).

Penalties up to \$75,000 apply for the damage, destruction or interference of palaeontological or geological sites, and for the removal of fossils, fossiliferous material, soil, rock, mineral or similar material from a palaeontological or geological site.



- Bus parking; Parking
- No camping; No fires
- Accessible toilet
- Building; Ruin
- Gate; Mine site
- Sealed road
- Unsealed road
- Track
- Walking trail
- Nilpena Ediacara National Park
- Other protected area
- Waterbody
- Intermittent waterbody
- Watercourse



Access to Nilpena Ediacara National Park is restricted to guided tours only. See www.parks.sa.gov.au/parks/nilpena-ediacara-national-park

Visit parks.sa.gov.au
 Get the Avenza Maps app to use park maps on your phone.
 For more information, contact:
 Department for Environment and Water
 E: parks@sa.gov.au
 P: 08 8207 7700

DEW does not guarantee that this map is error free. Use of the map is at the user's sole risk and the information contained on the map may be subject to change without notice.
 Cartography by DEW, Mapland - 2023