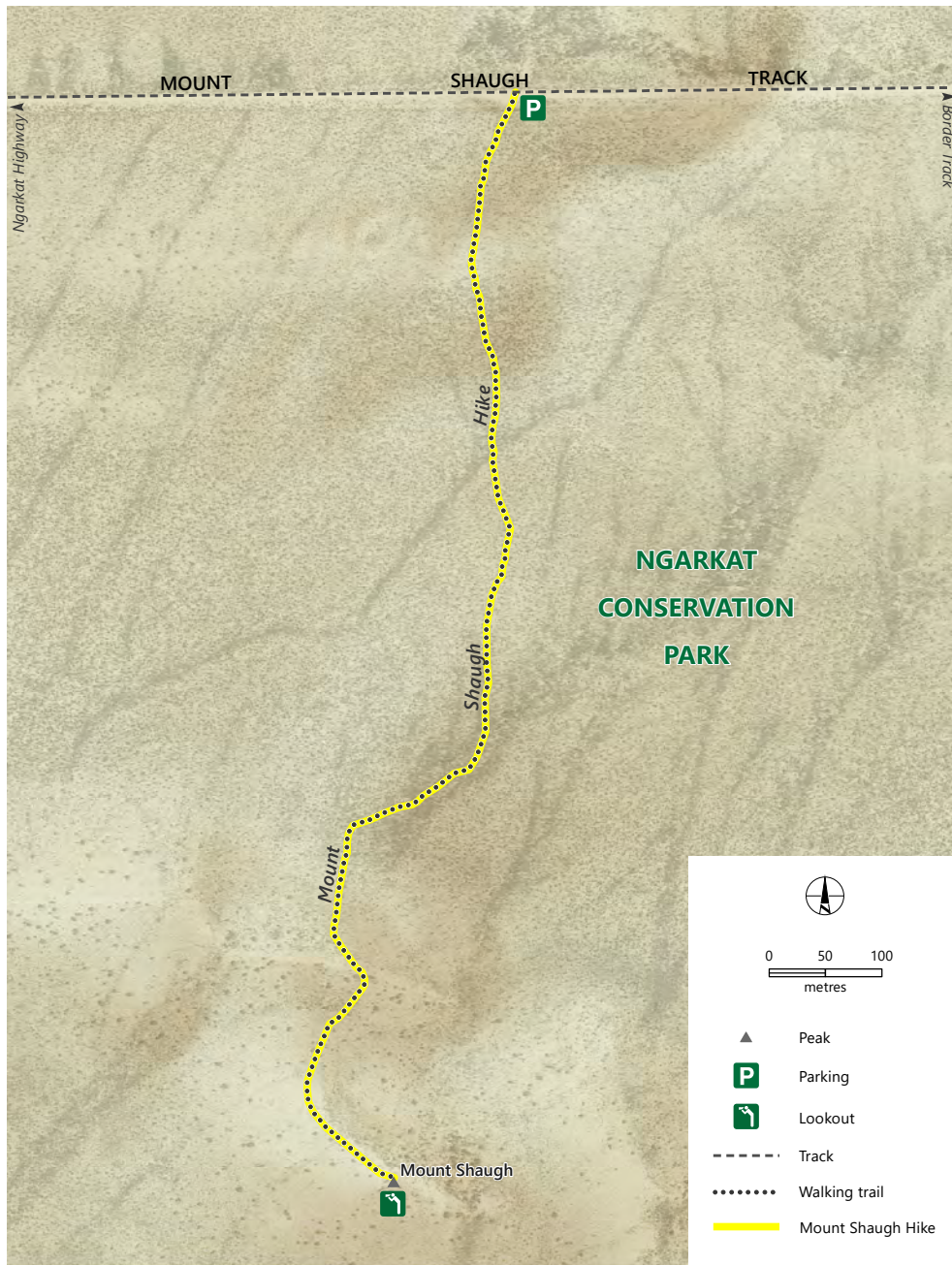


# Mount Shaugh Hike



Hike to the highest point in Ngarkat Conservation Park with spectacular views of the largest single remnant patch of native vegetation within settle agricultural regions of South Australia.

### The National Parks Code

Help protect your park by following these guidelines:

- Leave no trace - take your rubbish with you.
- Camping is only permitted in designated campground areas.
- Keep to defined tracks and trails
- Leave pets at home. 1080 poison, lethal to pets, is used in the park to control foxes and wild dogs.
- Do not remove or disturb plants, geological features, or cultural artefacts.
- Wood and solid fuel fires are prohibited throughout the year. Exceptions apply in the campground.

*Thank you for leaving the park in its natural state for the enjoyment of others.*

| Trail name               | Trail class                  | Distance/Time        | Trail description  |
|--------------------------|------------------------------|----------------------|--|
| <b>Mount Shaugh Hike</b> | <b>Grade 3 Moderate hike</b> | 2 km, 45 mins return | A moderate but short hike that requires a good fitness level. There will be some short steep sections an uneven surfaces. Some bushwalking experience is recommended. Trail markers guide the way. |

\*Hikers can estimate the time required to walk a trail by using an average speed of 3 to 4 km per hour.

- Permits are required.**
- Do not leave the track.** The uniform vegetation and lack of readily identifiable features make it easy to become disorientated. Follow the installed trail markers.
- Mobile phone coverage in the park is not guaranteed.**



Georeferenced interactive maps and more information at:  
[parks.sa.gov.au/parks/ngarkat-conservation-park](http://parks.sa.gov.au/parks/ngarkat-conservation-park)

