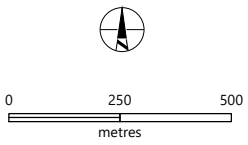
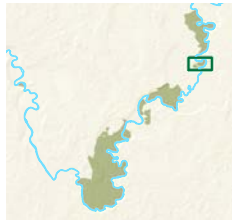


Murray River National Park

Paringa Paddock



Dogs on lead are permitted in the Paringa Paddock section of the Murray River National Park.



- Caravan Park
- Parking
- Shared use trail
- Murray River kilometre marker (distance from Murray mouth)
- Sealed road
- Unsealed road
- Vehicle track
- Trail
- Goat Island Trail
- Goosefoot Bush Trail
- Lock 5 Loop
- Tyntree Bend Trail
- Waatji Trail
- Built-up area
- Murray River NP
- Local reserve
- Orchard/Vineyard

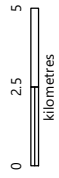
DEW does not guarantee that this map is error free. Use of the map is at the user's sole risk and the information contained on the map may be subject to change without notice. Cartography by DEW, Mapland - 2024

Visit parks.sa.gov.au
 Get the Avenza Maps app to use park maps on your phone.
 For more information, contact:
 Department for Environment and Water
 E: parks@sa.gov.au
 P: 08 8207 7700

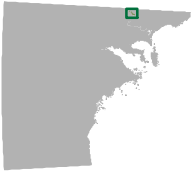
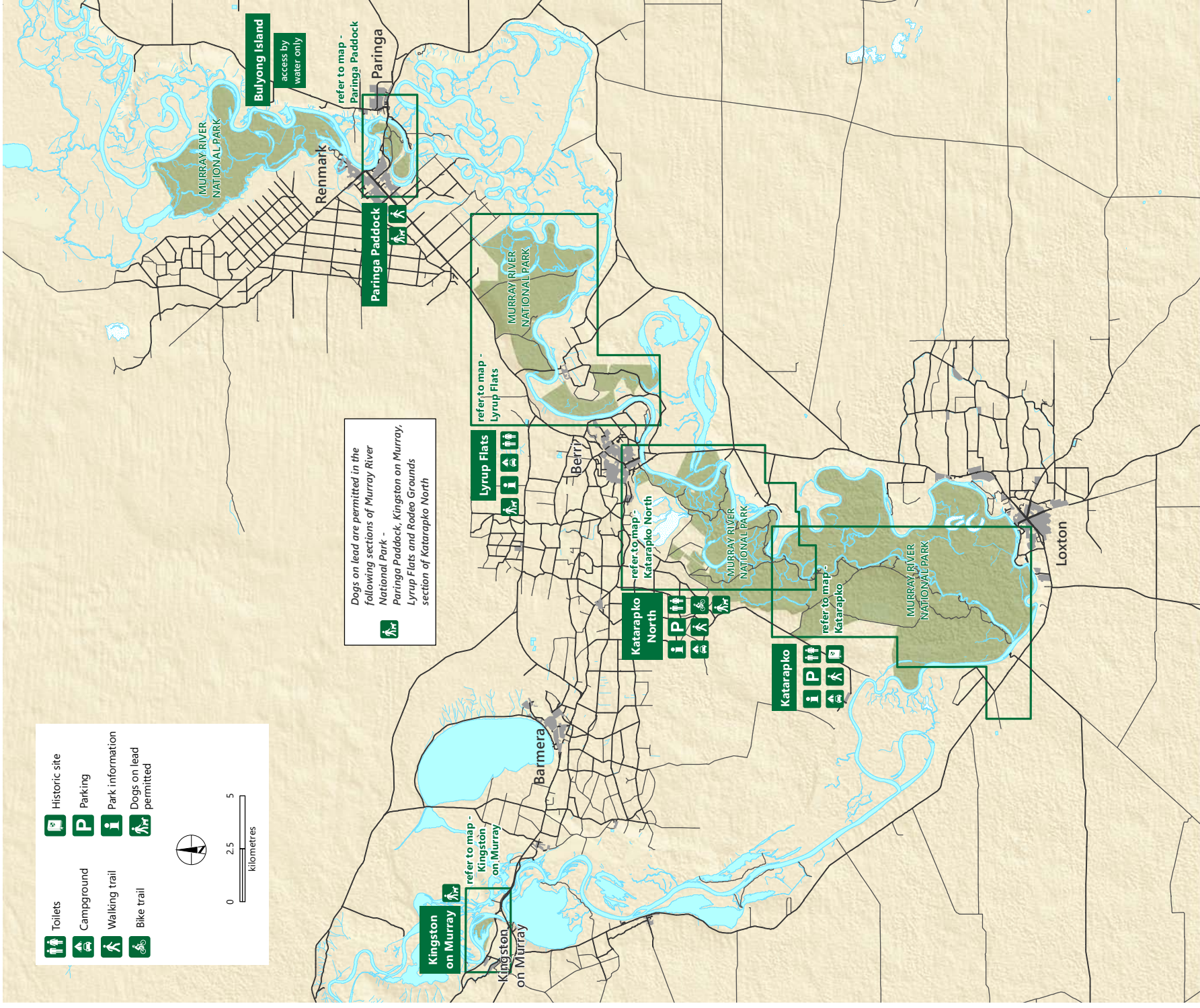
Murray River National Park



- Toilets
- Campground
- Walking trail
- Bike trail
- Historic site
- Parking
- Park information
- Dogs on lead permitted



Dogs on lead are permitted in the following sections of Murray River National Park -
 Paringa Paddock, Kingston on Murray, Lyrup Flats and Rodeo Grounds section of Katarapko North



- Sealed road
- Unsealed road
- Built-up area
- National Park

DEW does not guarantee that this map is error free. Use of the map is at the user's sole risk and the information contained on the map may be subject to change without notice.
 Cartography by DEW, Mapland - 2023

Book online at parks.sa.gov.au
 Get the Avenza Maps app to use park maps on your phone.
 For more information, contact:
 Department for Environment and Water
 E: parks@sa.gov.au
 P: 08 8207 7700