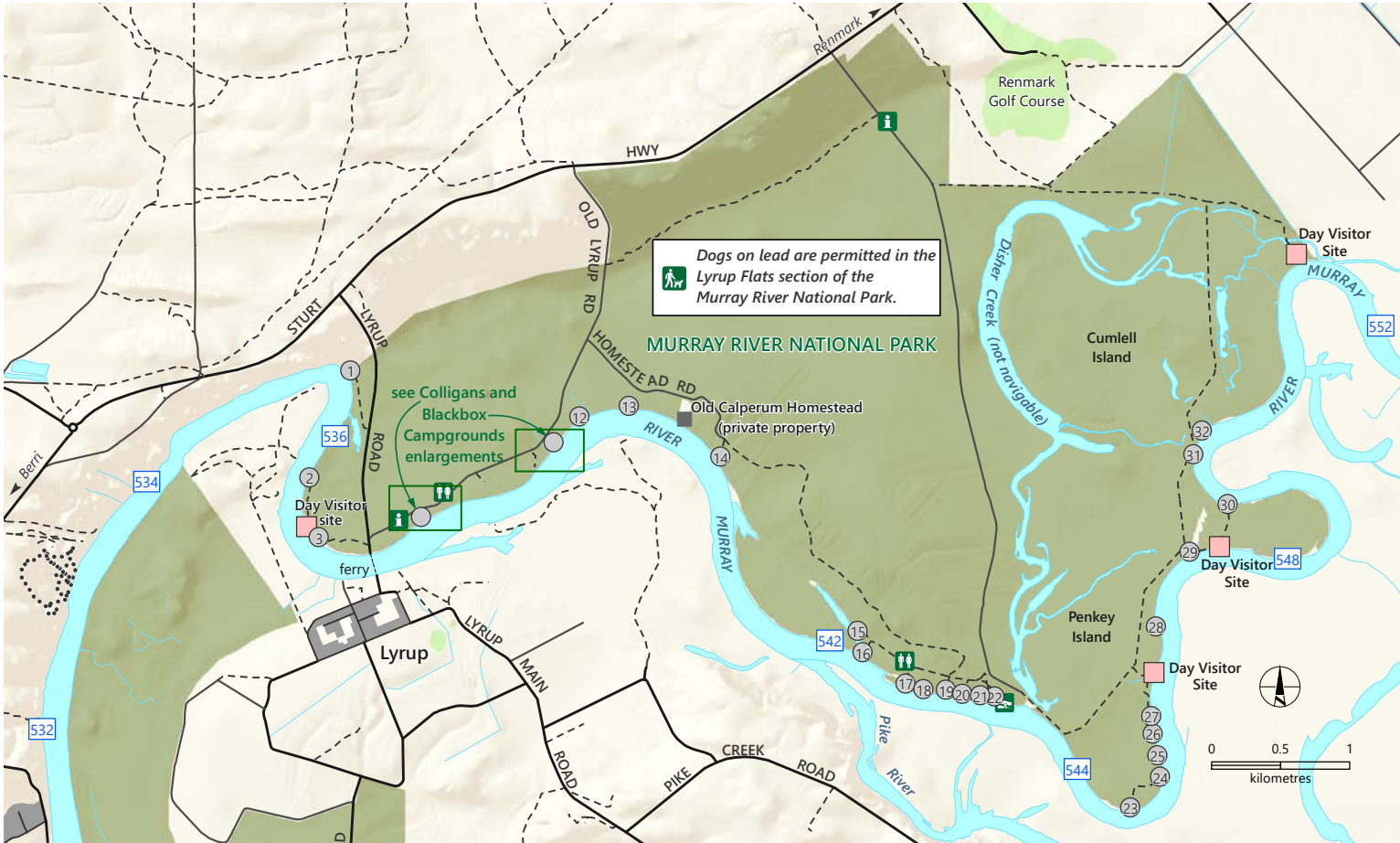
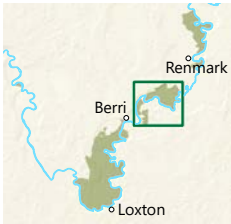


# Murray River National Park

## Lyrup Flats



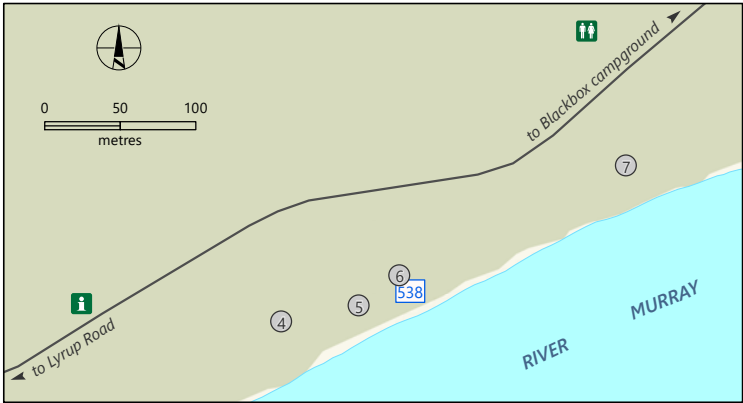
- National Park
- Built-up area
- Campsite number
- Day Visitor Site
- Murray River kilometre marker (distance from Murray mouth)
- Boat ramp
- Park information
- Toilets
- Campground
- Sealed road
- Unsealed road
- Track



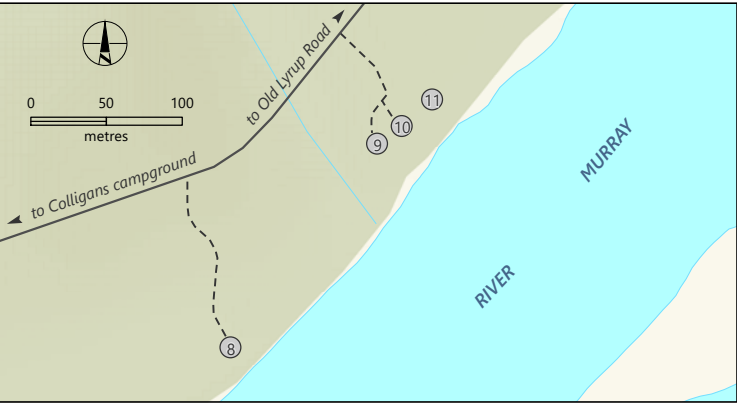
DEW does not guarantee that this map is error free. Use of the map is at the user's sole risk and the information contained on the map may be subject to change without notice. Cartography by DEW, Mapland - 2024

Book online at [parks.sa.gov.au](https://parks.sa.gov.au)  
Get the Avenza Maps app to use park maps on your phone.  
For more information, contact:  
Department for Environment and Water  
E: [parks@sa.gov.au](mailto:parks@sa.gov.au)  
P: 08 8207 7700

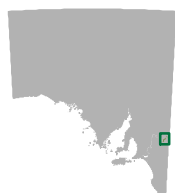
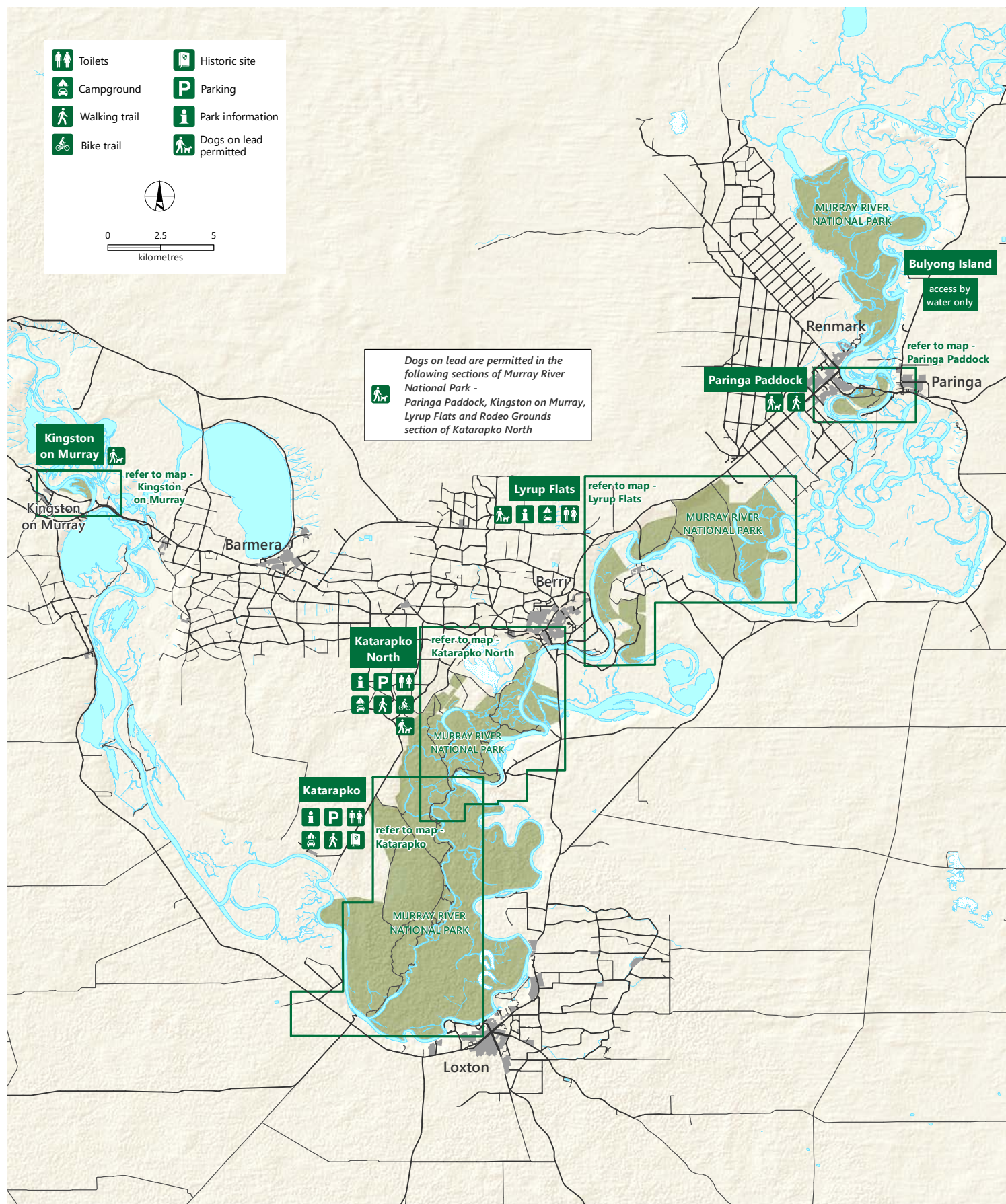
### Colligans Campground



### Blackbox Campground



# Murray River National Park



Sealed road  
 Unsealed road  
 Built-up area  
 National Park

DEW does not guarantee that this map is error free. Use of the map is at the user's sole risk and the information contained on the map may be subject to change without notice.  
 Cartography by DEW, Mapland - 2023

Book online at [parks.sa.gov.au](https://parks.sa.gov.au)  
 Get the Avenza Maps app to use park maps on your phone.  
 For more information, contact:  
 Department for Environment and Water  
 E: [parks@sa.gov.au](mailto:parks@sa.gov.au)  
 P: 08 8207 7700