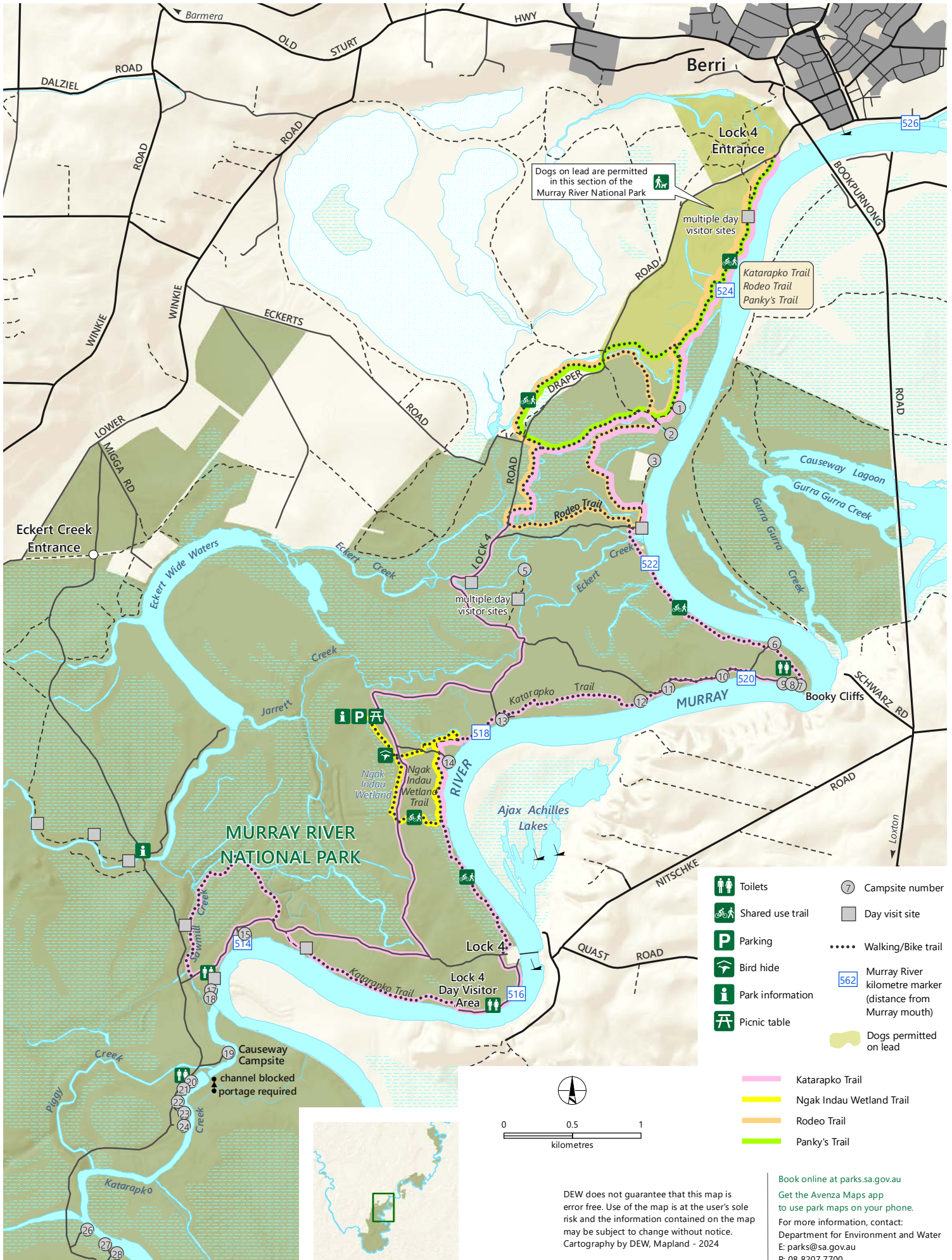


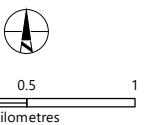
# Murray River National Park

## Katarapko North



- Toilets
- Shared use trail
- Parking
- Bird hide
- Park information
- Picnic table
- Campsite number
- Day visit site
- Walking/Bike trail
- Murray River kilometre marker (distance from Murray mouth)
- Dogs permitted on lead

- Katarapko Trail
- Ngak Indau Wetland Trail
- Rodeo Trail
- Panky's Trail



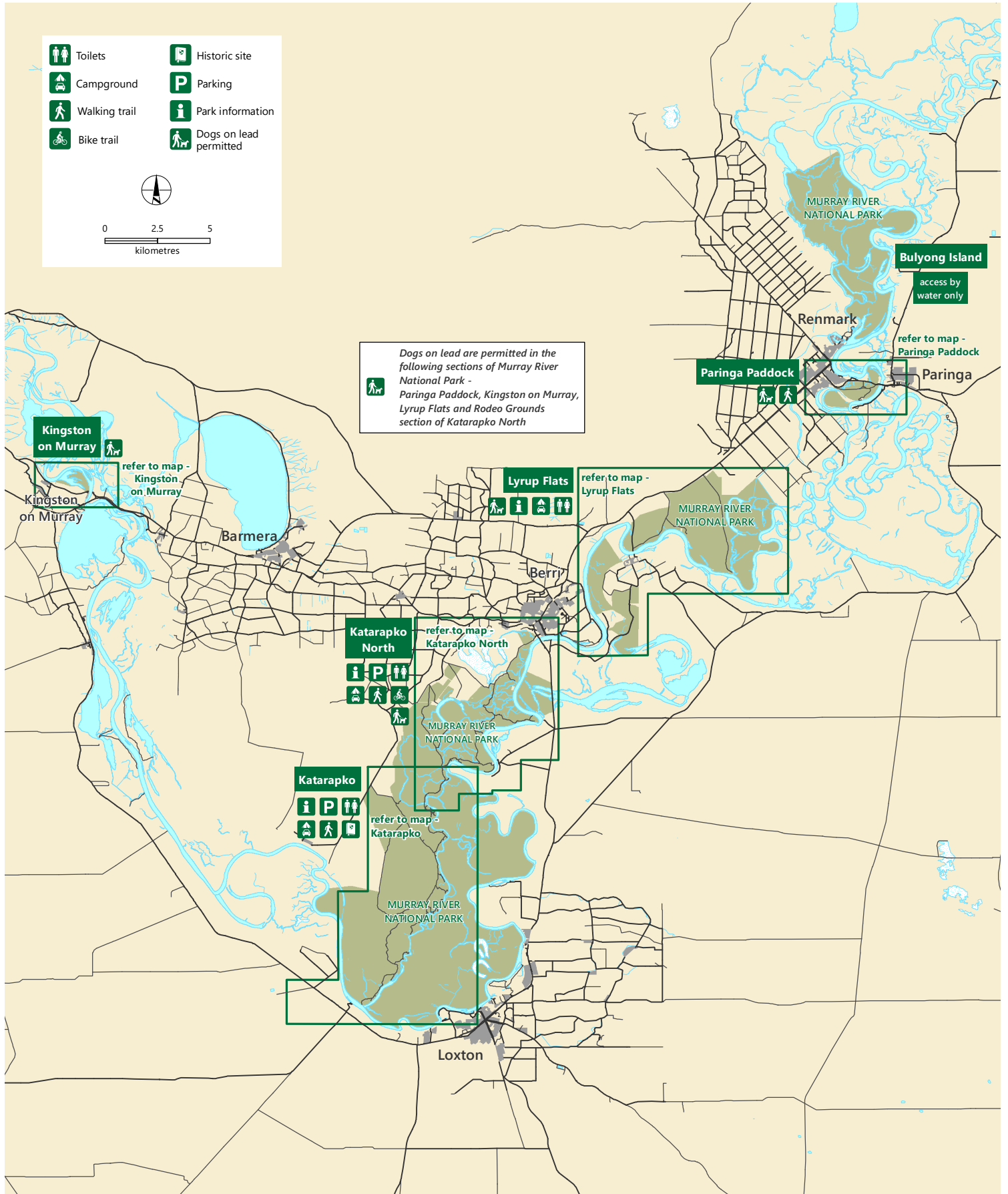
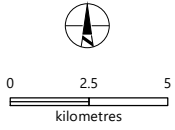
DEW does not guarantee that this map is error free. Use of the map is at the user's sole risk and the information contained on the map may be subject to change without notice. Cartography by DEW, Mapland - 2024

Book online at [parks.sa.gov.au](https://parks.sa.gov.au)  
 Get the Avenza Maps app to use park maps on your phone.  
 For more information, contact:  
 Department for Environment and Water  
 E: [parks@sa.gov.au](mailto:parks@sa.gov.au)  
 P: 08 827 7700

# Murray River National Park



- Toilets
- Campground
- Walking trail
- Bike trail
- Historic site
- Parking
- Park information
- Dogs on lead permitted



- Sealed road
- Unsealed road
- Built-up area
- National Park

DEW does not guarantee that this map is error free. Use of the map is at the user's sole risk and the information contained on the map may be subject to change without notice.  
Cartography by DEW, Mapland - 2023

Book online at [parks.sa.gov.au](http://parks.sa.gov.au)  
Get the Avenza Maps app to use park maps on your phone.  
For more information, contact:  
Department for Environment and Water  
E: [parks@sa.gov.au](mailto:parks@sa.gov.au)  
P: 08 8207 7700