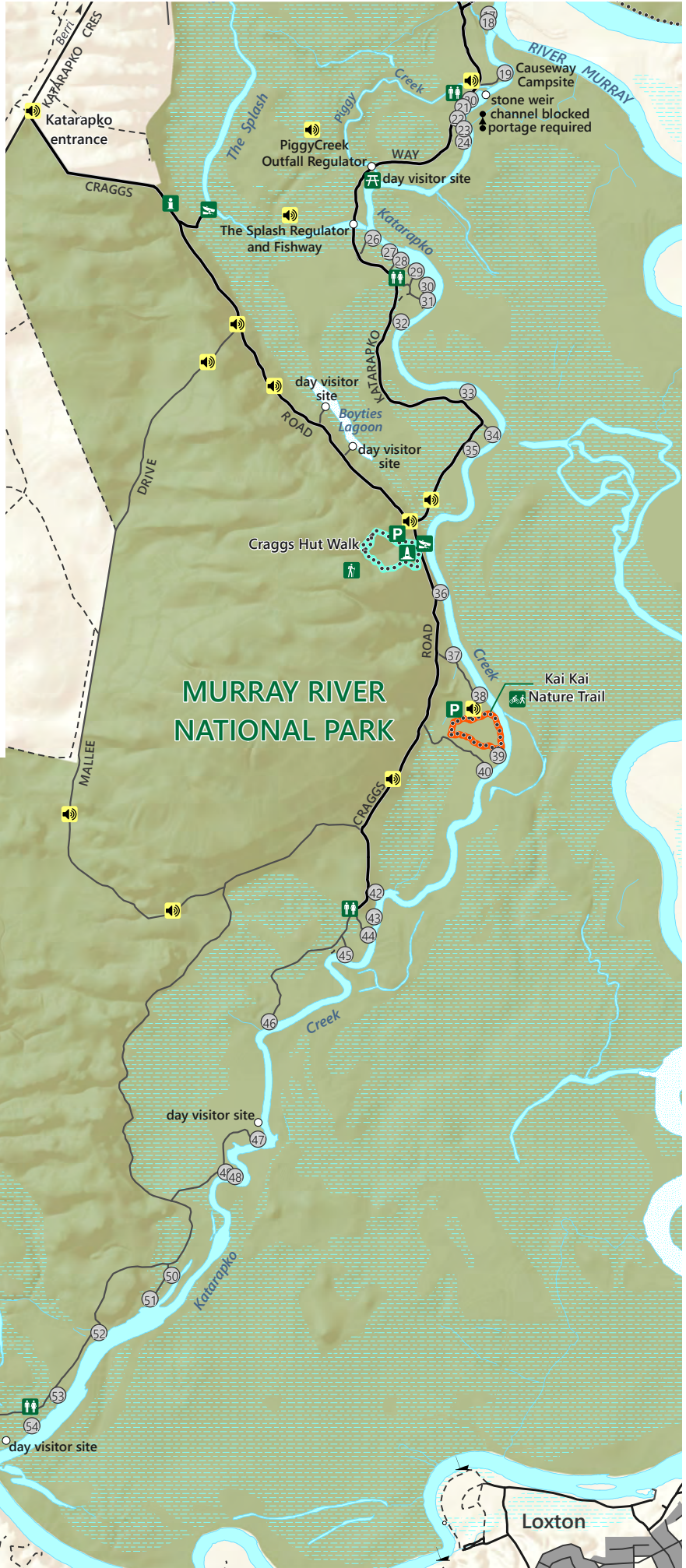
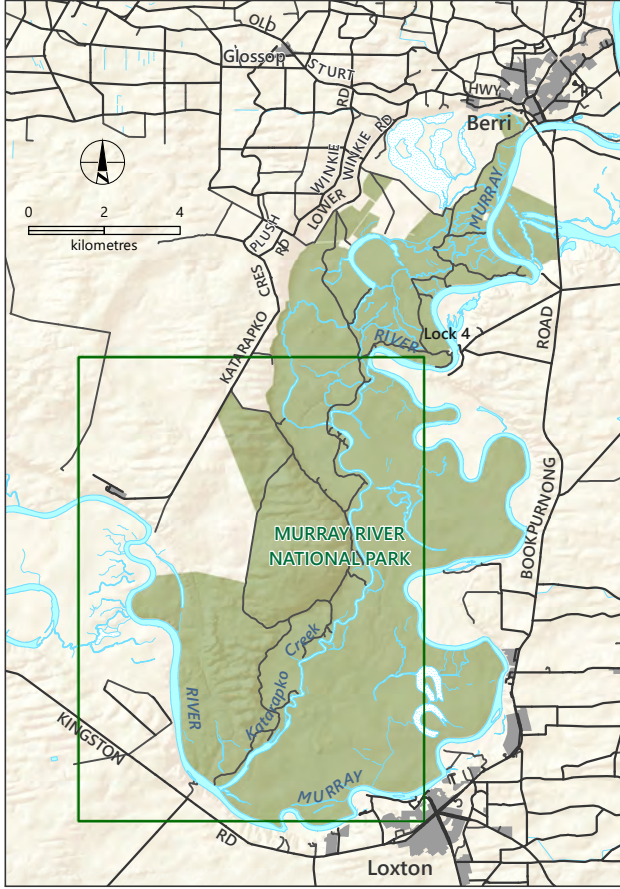






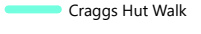
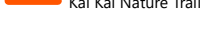







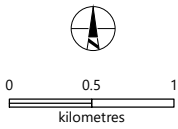


Murray River National Park

Katarapko

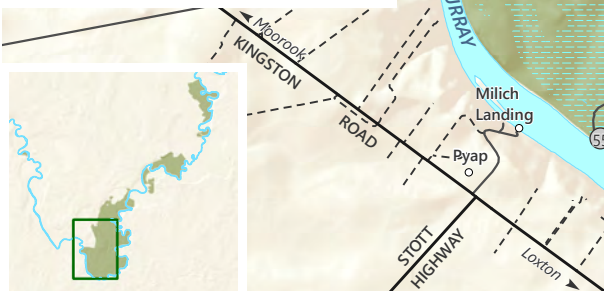


-  Audio tour stop
-  Shared use trail
-  Toilets
-  Boat access
-  Walking trail
-  Campsite number
-  Craggs Hut Walk
-  Kai Kai Nature Trail
-  Picnic area
-  Historic site
-  Parking
-  Park information
-  Day visitor site or point of interest
-  All-weather unsealed road
-  Walking/bike trail

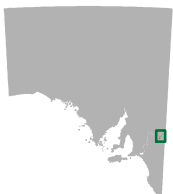
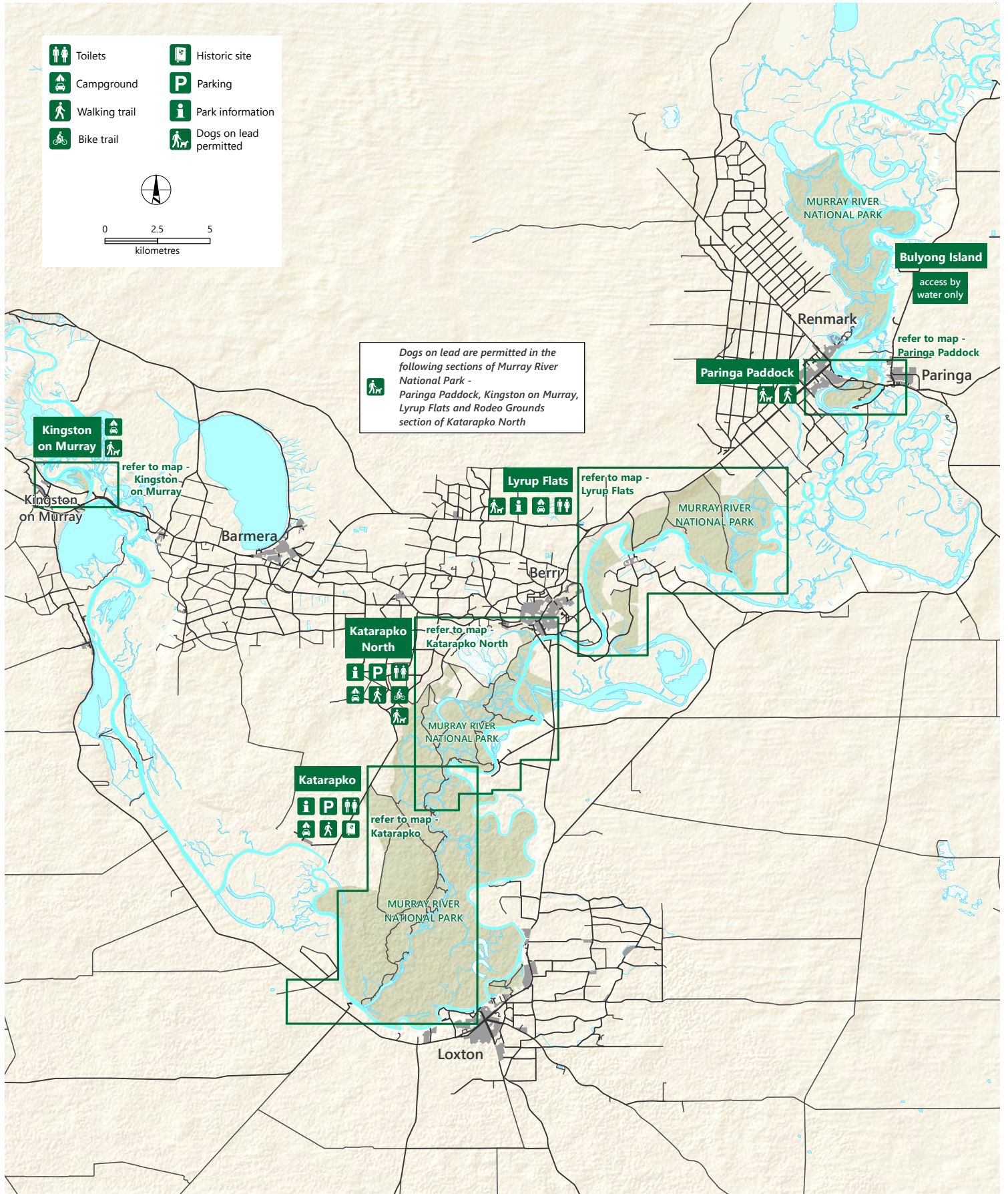


DEW does not guarantee that this map is error free. Use of the map is at the user's sole risk and the information contained on the map may be subject to change without notice. Cartography by DEW, Mapland - 2024

Book online at parks.sa.gov.au
 Get the Avenza Maps app to use park maps on your phone.
 For more information, contact:
 Department for Environment and Water
 E: parks@sa.gov.au
 P: 08 8207 7700



Murray River National Park



- Sealed road
- Unsealed road
- Built-up area
- National Park

DEW does not guarantee that this map is error free. Use of the map is at the user's sole risk and the information contained on the map may be subject to change without notice. Cartography by DEW, Mapland - 2025

Book online at parks.sa.gov.au

Get the Avenza Maps app to use park maps on your phone.

For more information, contact:
 Department for Environment and Water
 E: parks@sa.gov.au
 P: 08 8207 7700