

Follow the trails to experience the Murray River National Park. See the majestic Murray River, Eckerts Creek (Rodeo trail) and if you have the time you can go to Lock 4 (Katarapko trail).

The trails pass by ancient river red gums, through black box woodlands, along teatree-lined dry creek beds and traverse saltbush plains.

Listen or look out for over 50 species of native birds that frequent this area and you may be lucky to spot one of the many resident lace monitors (goannas) that will scamper away or climb up the trunk of a tree as you approach.

### All trails follow the same path initially.

Suitable for all age groups and levels of experience.

Just choose the track that suits you. As the tracks are two way, you can turn around at any time. Please be mindful of walkers, and other less experienced trail users where these bike trails merge.



## Katarapko Trail

20km - 5 hrs walk - 2 hrs ride



Cross the regulator and follow the trail through some areas of dense vegetation. The trail crosses a small regulator on the creek that supplies the Ngak Indau wetland with water. Downstream of Lock 4 is a great area for a picnic or to try a spot of fishing.

From Lock 4 continue along the river and then out onto the floodplain and temporary wetlands. Visit the Ngak Indau wetland and interpretation trail (and Kevin Smith bird hide) that highlights the major vegetation found on the floodplain.



## Rodeo Trail

8km - 2.5 hrs walk - 45 min ride



The name of this trail derives from the rodeo arena (now removed) that was located soon after the start of the trails. You will pass over a small bridge and the track passes through an old fisherman's lease and on to the large regulator that controls the flow of water from the river into Eckert Creek.

At this point the Rodeo Trail loops back towards the start and the Katarapko Trail continues over the regulator following the river towards Lock 4.



## Panky's Trail

5km - 1.5 hrs walk - 30 min ride



A family friendly walk or ride. Providing the opportunity for children to play and explore nature along the way. Rock crossing is a beautiful area to stop for a picnic and play.



# Katarapko Bike Riding and Walking Trails

Murray River National Park  
Katarapko - Berri SA

These trails start at the old "Rodeo Grounds", located on the left just past the Lock 4 entrance (from Berri) to the Park. There is plenty of room for parking.



### Grade 4 Moderate Hike

Bushwalking experience recommended. Tracks may be long, rough and very steep. Directional signage may be limited.



### Grade 3 Moderate Walk

Suitable for most ages and fitness levels. Some bushwalking experience recommended. Tracks may have short steep hill sections, a rough surface and many steps. Walks up to 20 km.



### Easy with Intermediate Sections

Likely to be single track with a moderate gradient, variable surface and some obstacles. Some obstacles such as roots, logs, and rocks. Suitable for mountain bikers with mountain bikes



### Easy Trails

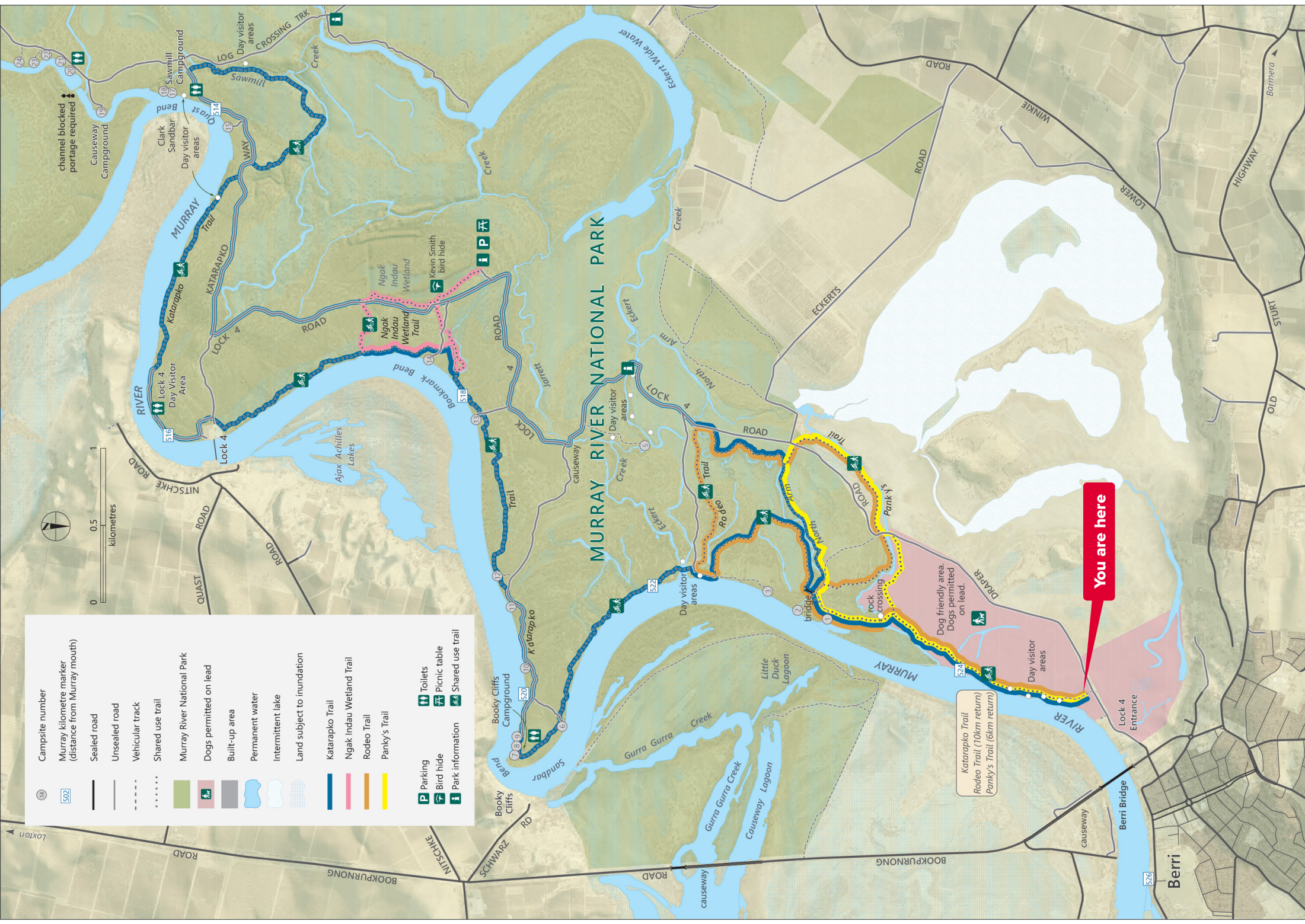
Wide trail with gentle gradient and smooth surface. Some obstacles such as roots, logs, and rocks. Suitable for beginner cyclists with basic mountain bike skills.

For more information please visit  
[www.parks.sa.gov.au](http://www.parks.sa.gov.au)





- Campsite number
- Murray kilometre marker (distance from Murray mouth)
- Sealed road
- Unsealed road
- Vehicular track
- Shared use trail
- Murray River National Park
- Dogs permitted on lead
- Built-up area
- Permanent water
- Intermittent lake
- Land subject to inundation
- Katarapko Trail
- Ngak Indau Wetland Trail
- Rodeo Trail
- Panky's Trail
- Parking
- Bird hide
- Park information
- Toilets
- Picnic table
- Shared use trail



Katarapko Trail  
Rodeo Trail (10km return)  
Panky's Trail (6km return)

You are here

526

524

522

520

518

516

514

512

510

508

506

504

502

500

498

496

494

492

490

488

486

484

482

480

478

476

474

472

470

468

466

464

462

460

458

456

454

452

450

448

446

444

442

440

438

436

434

432

430

428

426

424

422

420

418

416

414

412

410

408

406

404

402

400

398

396

394

392

390

388

386

384

382

380

378

376

374

372

370

368

366

364

362

360

358

356

354

352

350

348

346

344

342

340

338

336

334

332

330

328

326

324

322

320

318

316

314

312

310

308

306

304

302

300

298

296

294

292

290

288

286

284

282

280

278

276

274

272

270

268

266

264

262

260

258

256

254

252

250

248

246

244

242

240

238

236

234

232

230

228

226

224

222

220

218

216

214

212

210

208

206

204

202

200

198

196

194

192

190

188

186

184

182

180

178

176

174

172

170

168

166

164

162

160

158

156

154

152

150

148

146

144

142

140

138

136

134

132

130

128

126

124

122

120

118

116

114

112

110

108

106

104

102

100

98

96

94

92

90

88

86

84

82

80

78

76

74

72

70

68

66

64

62

60

58

56

54

52

50

48

46

44

42

40

38

36

34

32

30

28

26

24

22

20

18

16

14

12

10

8

6

4

2

0