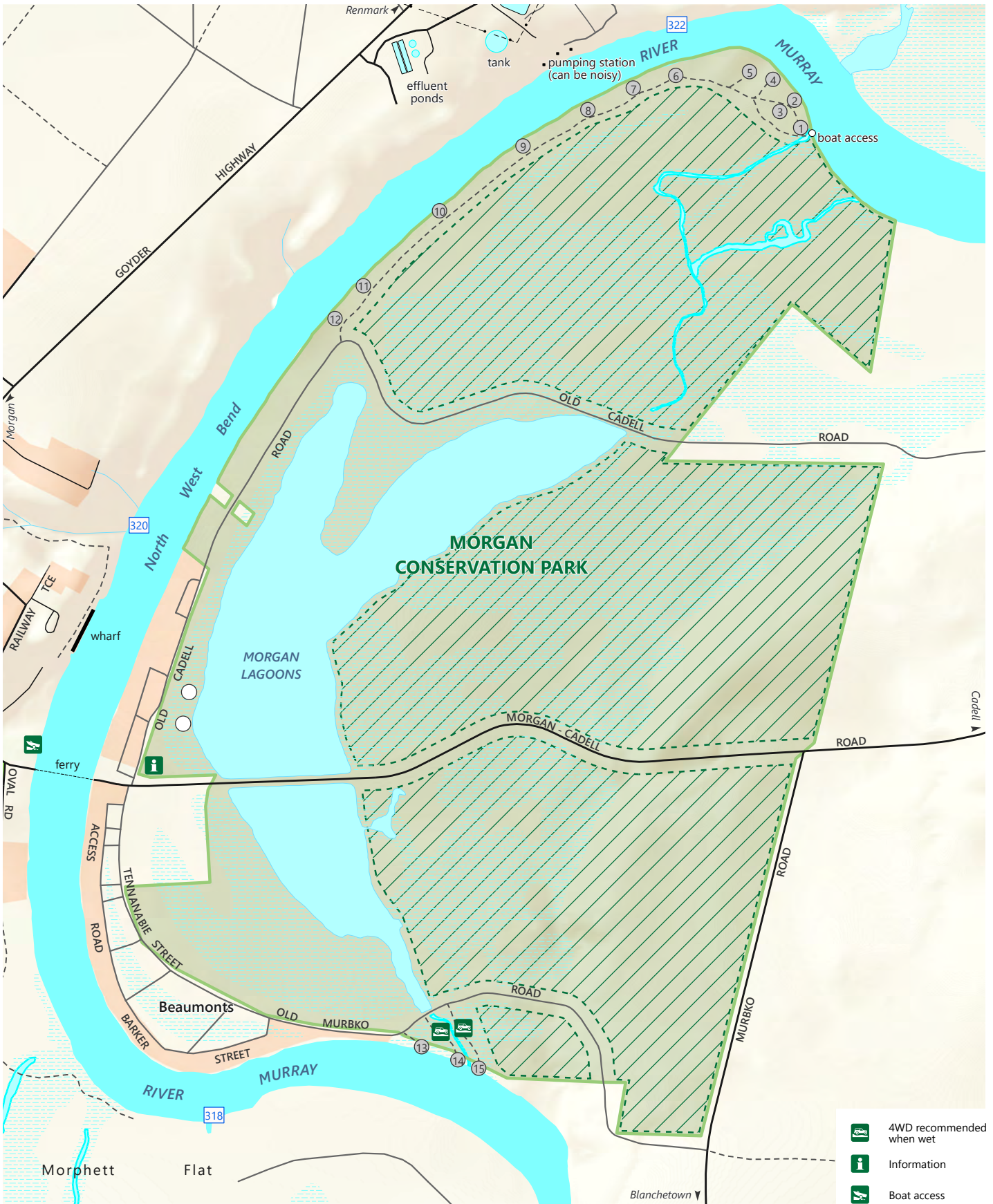


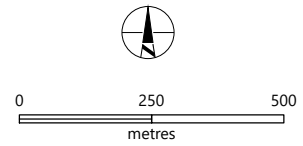
Morgan Conservation Park



- 4WD recommended when wet
- Information
- Boat access



- Sealed road
- Unsealed road
- Track
- Power transmission line
- Campsite number
- Day visit site
- River Murray km marker (distance from Murray Mouth)
- Morgan Conservation Park
- Built-up area
- Vehicle access prohibited
- Lagoon
- River Murray
- Land subject to inundation
- Quarry



DEW does not guarantee that this map is error free. Use of the map is at the user's sole risk and the information contained on the map may be subject to change without notice. Cartography by DEW, Mapland - 2025

Book online at parks.sa.gov.au
Get the Avenza Maps app to use park maps on your phone.

For more information, contact:
Department for Environment and Water
E: parks@sa.gov.au
P: 08 8207 7700

**Note: Dogs are not allowed (assistance dogs excepted).
No off-road bikes or off-road driving.
Campfires are subject to local fire bans.**