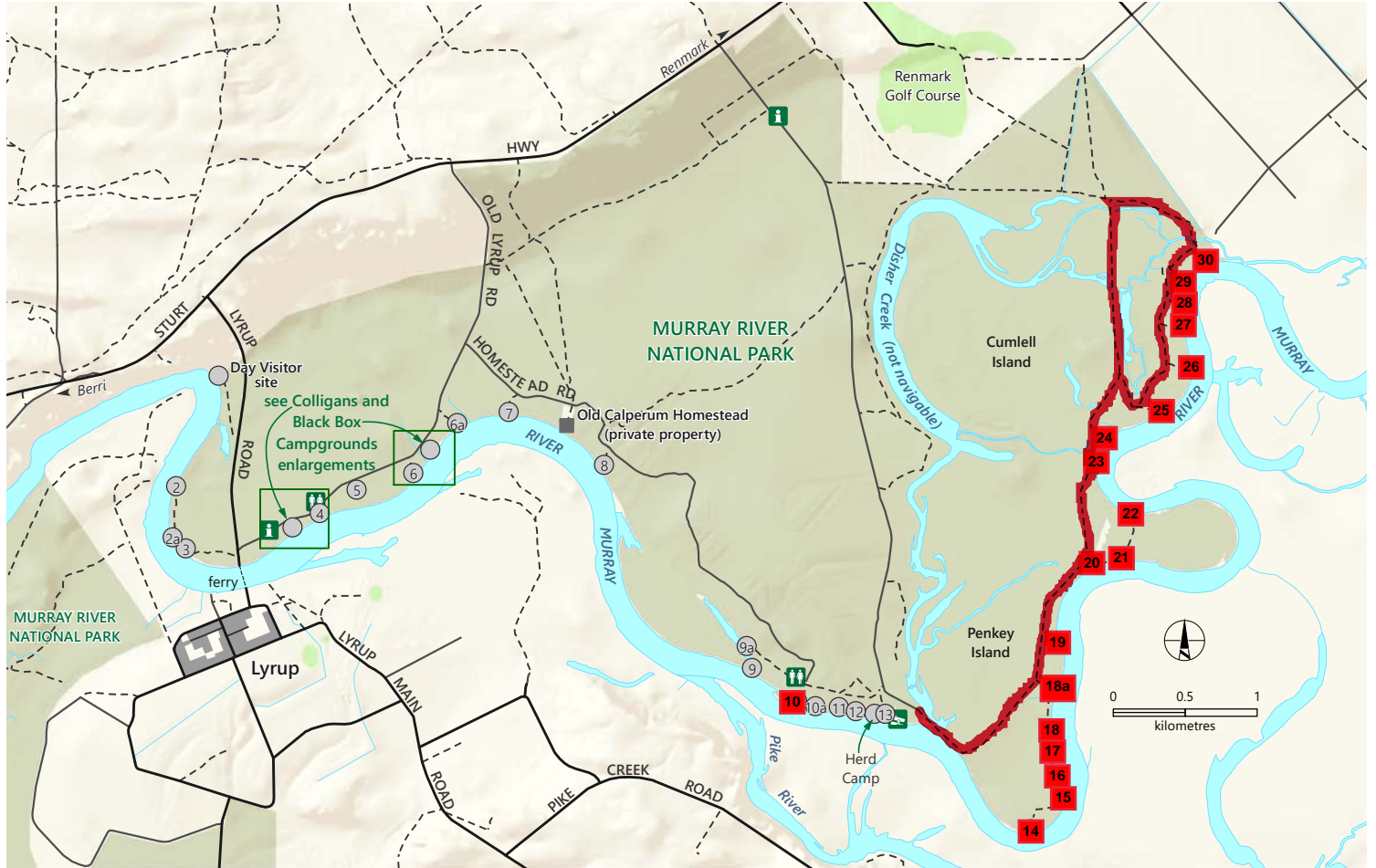
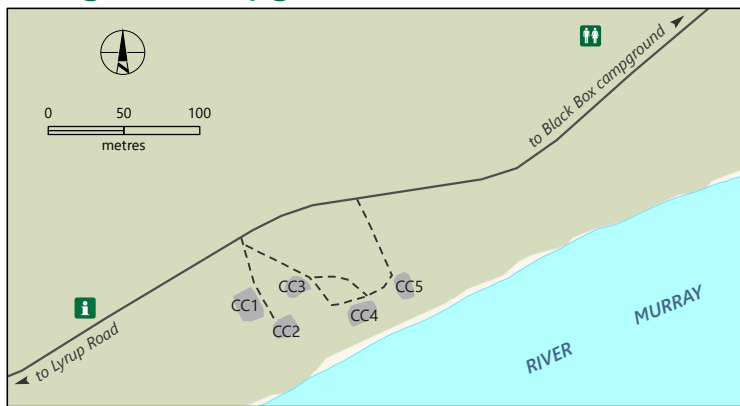


# Murray River National Park

## Lyrup Flats



## Colligans Campground



- |               |                    |                  |
|---------------|--------------------|------------------|
| Sealed road   | Built-up area      | Boat ramp        |
| Unsealed road | Campsite number    | Park information |
| Track         | Colligans campsite | Toilets          |
|               | Black Box campsite | Campground       |
|               |                    | Campsite closed  |
|               |                    | Road Closed      |



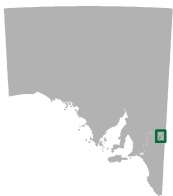
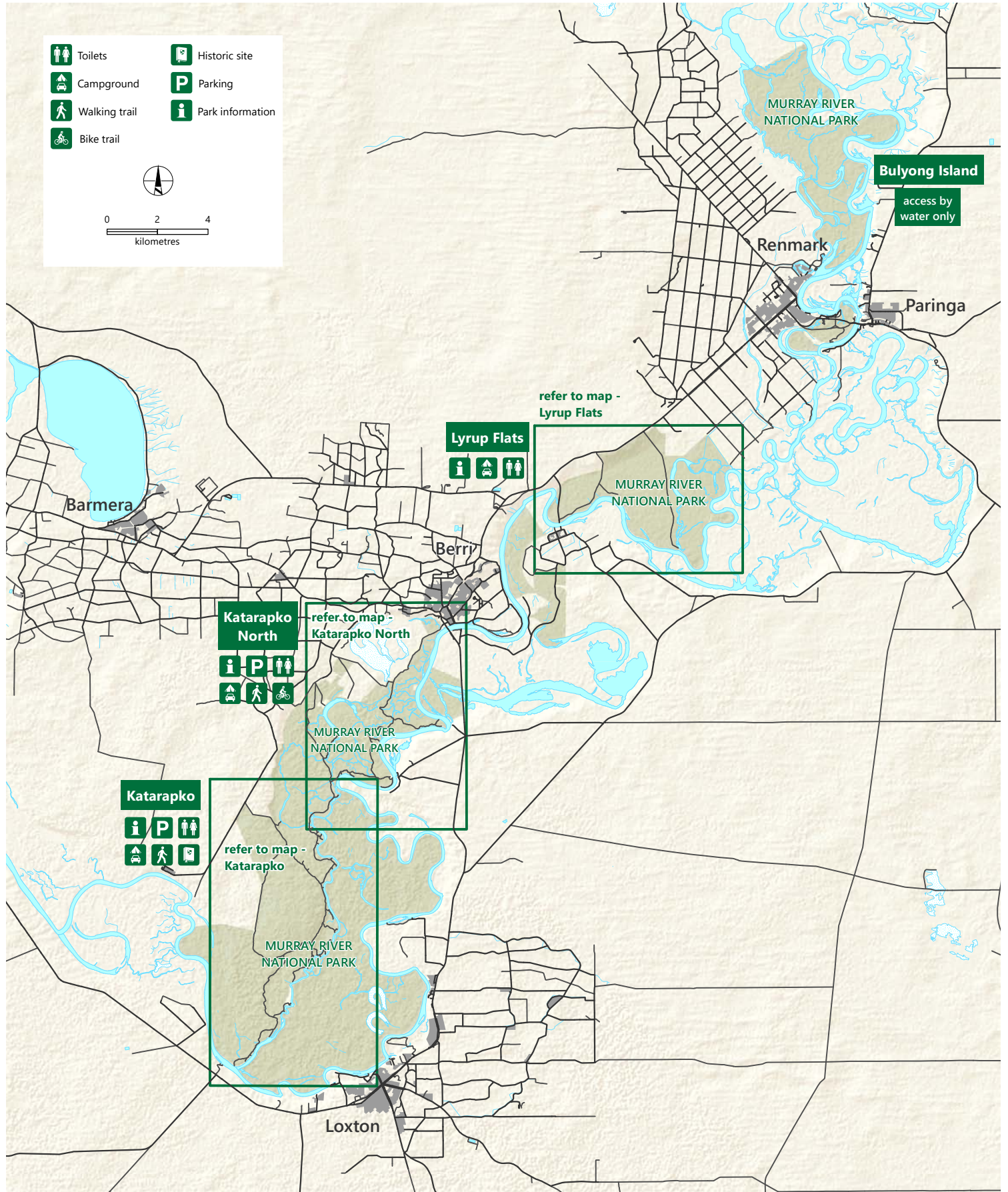
## Black Box Campground



DEW does not guarantee that this map is error free. Use of the map is at the user's sole risk and the information contained on the map may be subject to change without notice. Cartography by DEW, Mapland - 2020

Book online at [parks.sa.gov.au](http://parks.sa.gov.au)  
 Get the Avenza Maps app to use park maps on your phone.  
 For more information, contact:  
 Department for Environment and Water  
 E: [parks@sa.gov.au](mailto:parks@sa.gov.au)  
 P: 08 8207 7700

# Murray River National Park



- Sealed road
- Unsealed road
- Built-up area
- National Park

DEW does not guarantee that this map is error free. Use of the map is at the user's sole risk and the information contained on the map may be subject to change without notice. Cartography by DEW, Mapland - 2020

Book online at [parks.sa.gov.au](http://parks.sa.gov.au)

Get the Avenza Maps app to use park maps on your phone.

For more information, contact:  
 Department for Environment and Water  
 E: [parks@sa.gov.au](mailto:parks@sa.gov.au)  
 P: 08 8207 7700