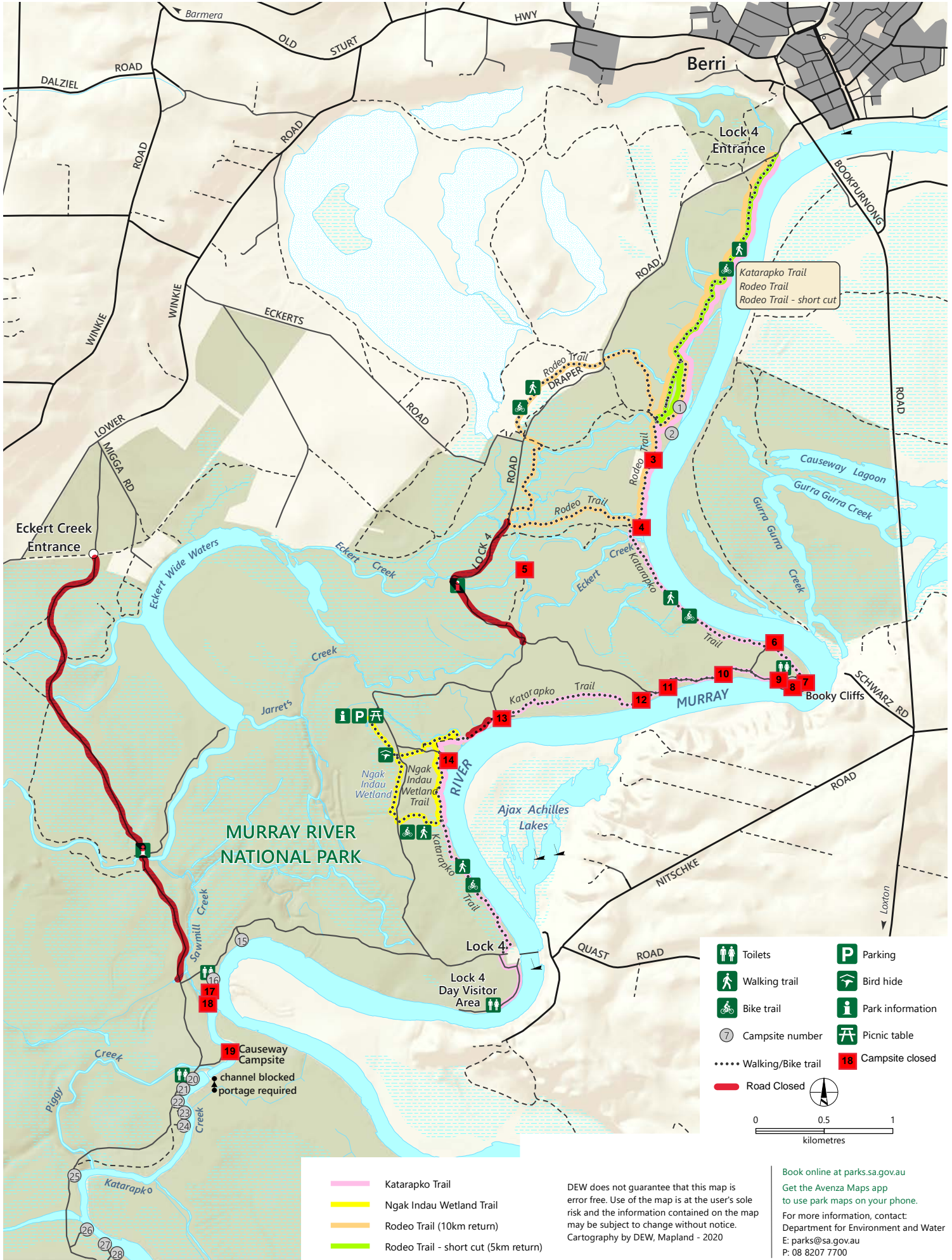


Murray River National Park

Katarapko North



Toilets	Parking
Walking trail	Bird hide
Bike trail	Park information
Campsite number	Picnic table
Walking/Bike trail	Campsite closed
Road Closed	

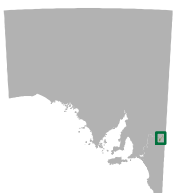
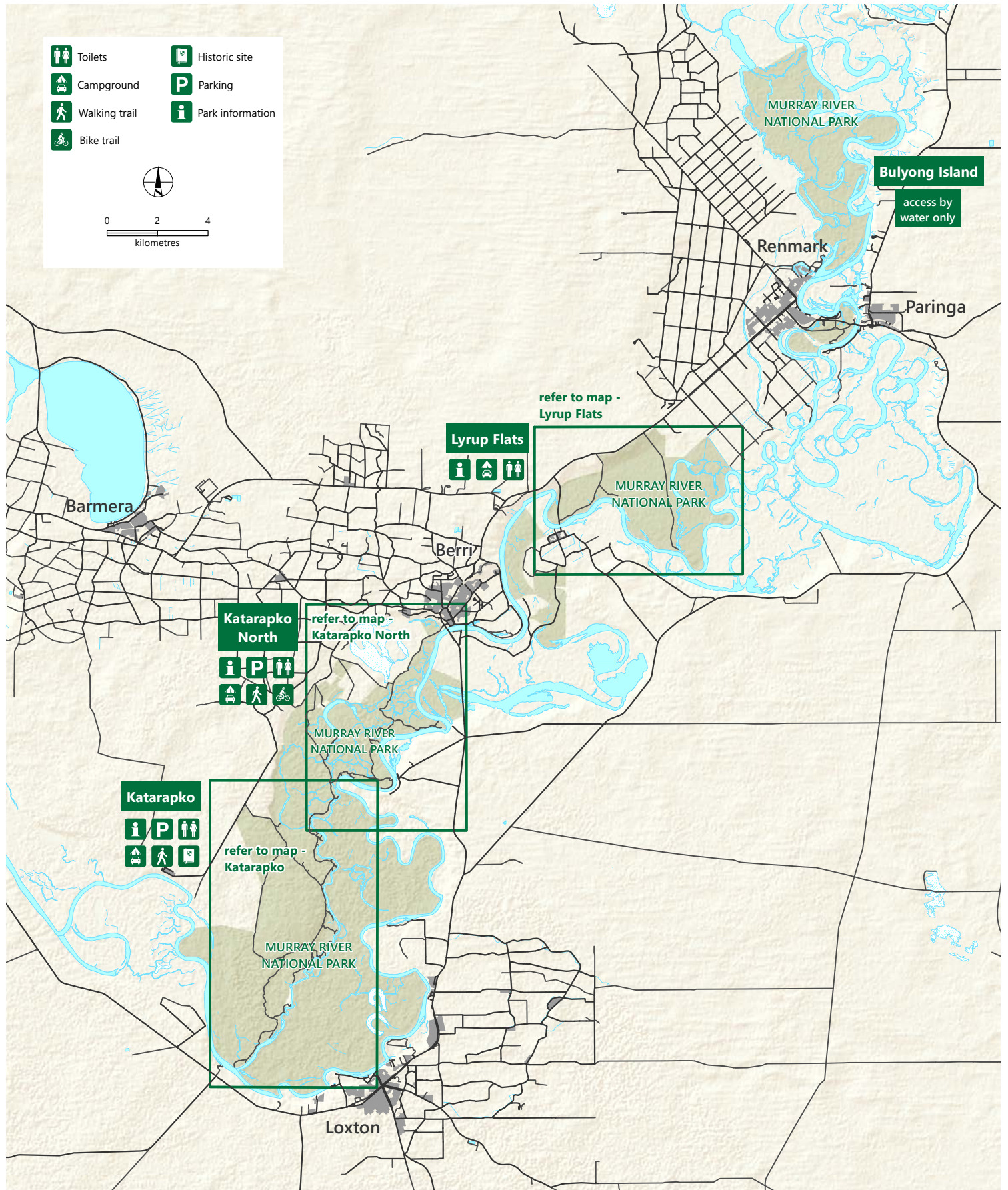
0 0.5 1
kilometres

- Katarapko Trail
- Ngak Indau Wetland Trail
- Rodeo Trail (10km return)
- Rodeo Trail - short cut (5km return)

DEW does not guarantee that this map is error free. Use of the map is at the user's sole risk and the information contained on the map may be subject to change without notice. Cartography by DEW, Mapland - 2020

Book online at parks.sa.gov.au
 Get the Avenza Maps app to use park maps on your phone.
 For more information, contact:
 Department for Environment and Water
 E: parks@sa.gov.au
 P: 08 8207 7700

Murray River National Park



- Sealed road
- Unsealed road
- Built-up area
- National Park

DEW does not guarantee that this map is error free. Use of the map is at the user's sole risk and the information contained on the map may be subject to change without notice.
Cartography by DEW, Mapland - 2020

Book online at parks.sa.gov.au

Get the Avenza Maps app to use park maps on your phone.

For more information, contact:
Department for Environment and Water
E: parks@sa.gov.au
P: 08 8207 7700