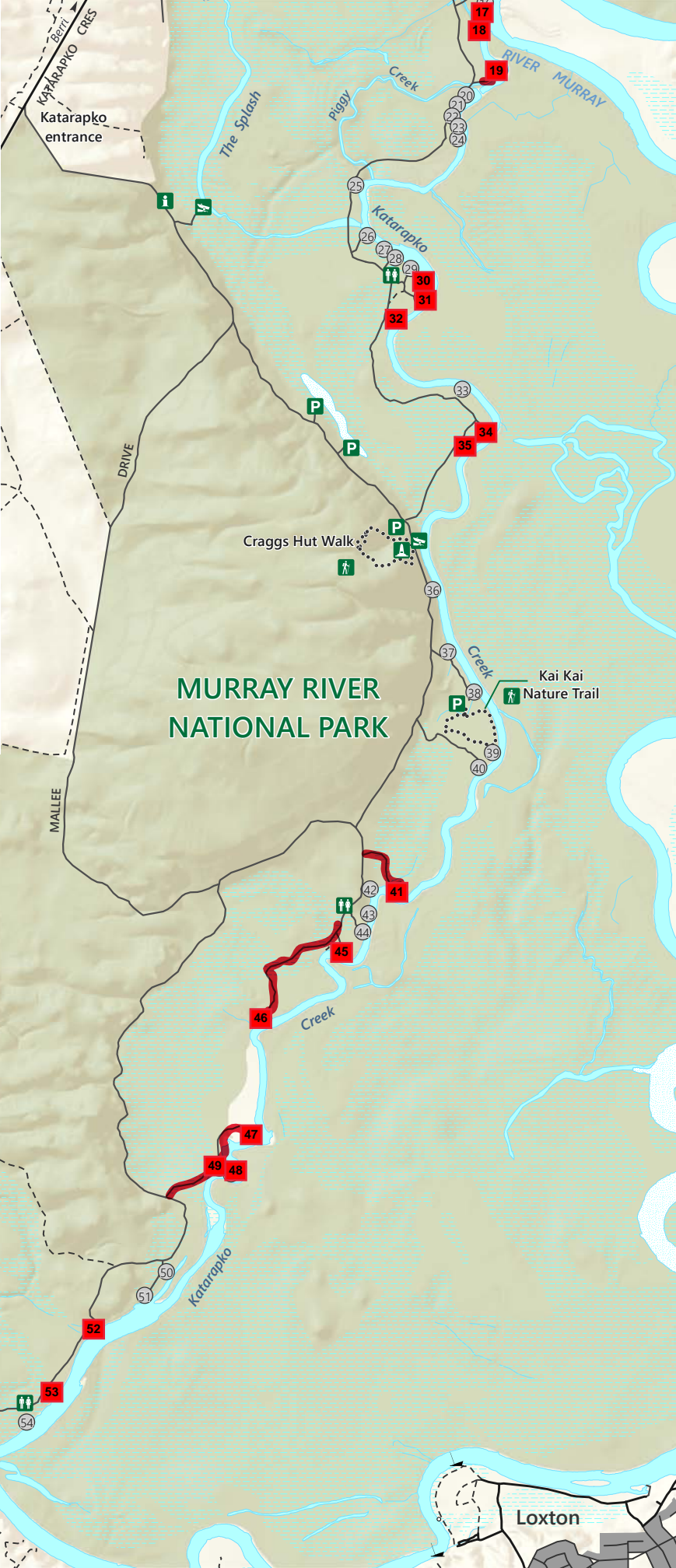
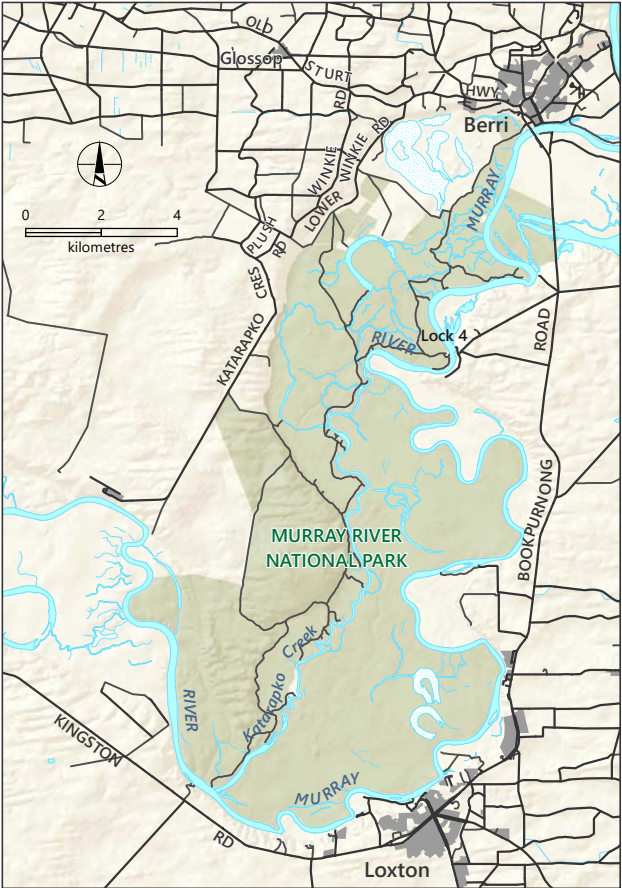


Murray River National Park

Katarapko



Toilets

Boat access

Walking trail

Campsite number

Historic site

Parking

Park information

Campsite closed

Road Closed

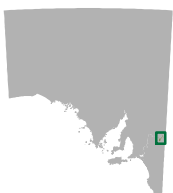
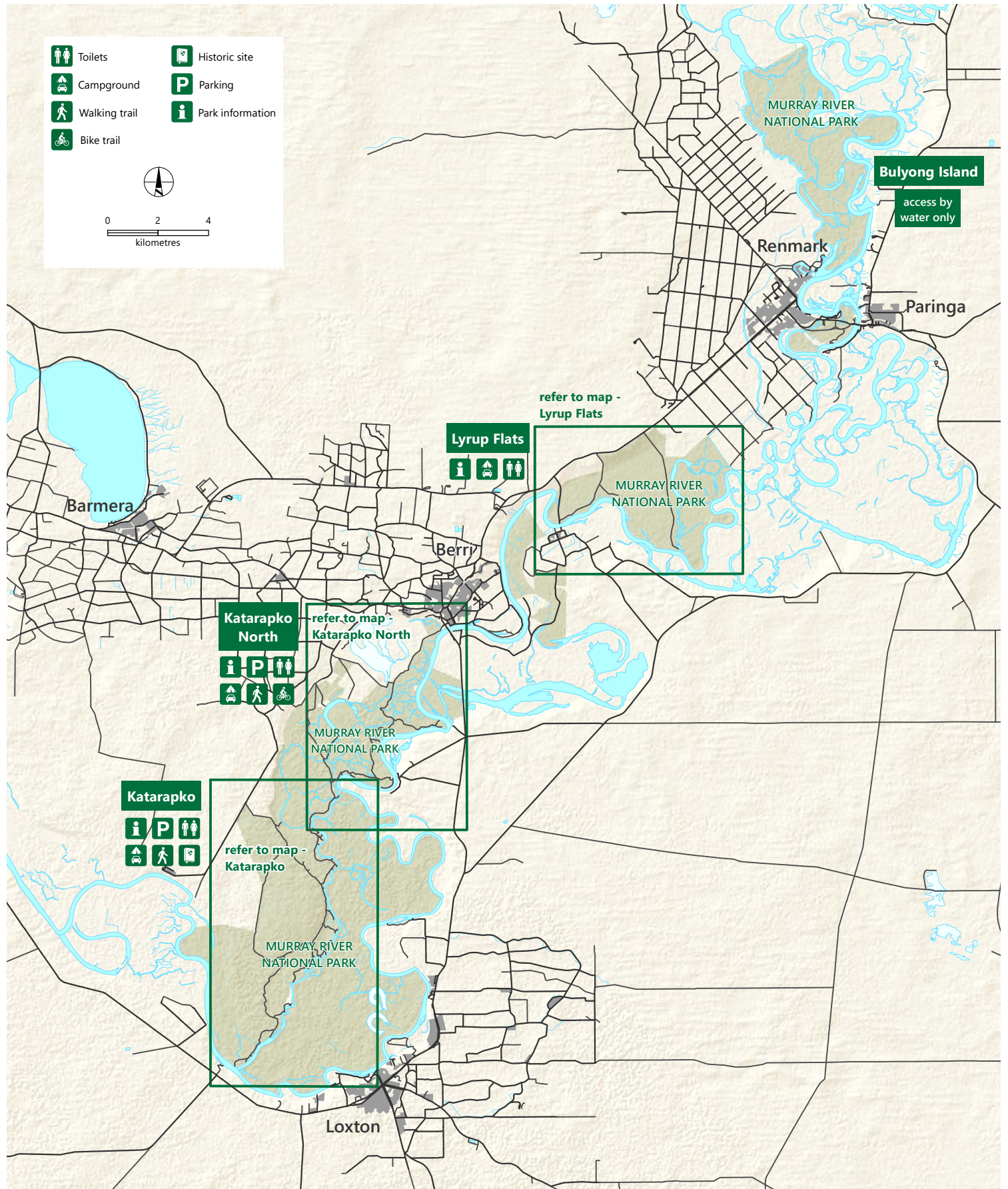
00.51

kilometres

DEW does not guarantee that this map is error free. Use of the map is at the user's sole risk and the information contained on the map may be subject to change without notice. Cartography by DEW, Mapland - 2020

Book online at parks.sa.gov.au
Get the Avenza Maps app to use park maps on your phone.
For more information, contact:
Department for Environment and Water
E: parks@sa.gov.au
P: 08 8207 7700

Murray River National Park



- Sealed road
- Unsealed road
- Built-up area
- National Park

DEW does not guarantee that this map is error free. Use of the map is at the user's sole risk and the information contained on the map may be subject to change without notice. Cartography by DEW, Mapland - 2020

Book online at parks.sa.gov.au
 Get the Avenza Maps app to use park maps on your phone.
 For more information, contact:
 Department for Environment and Water
 E: parks@sa.gov.au
 P: 08 8207 7700