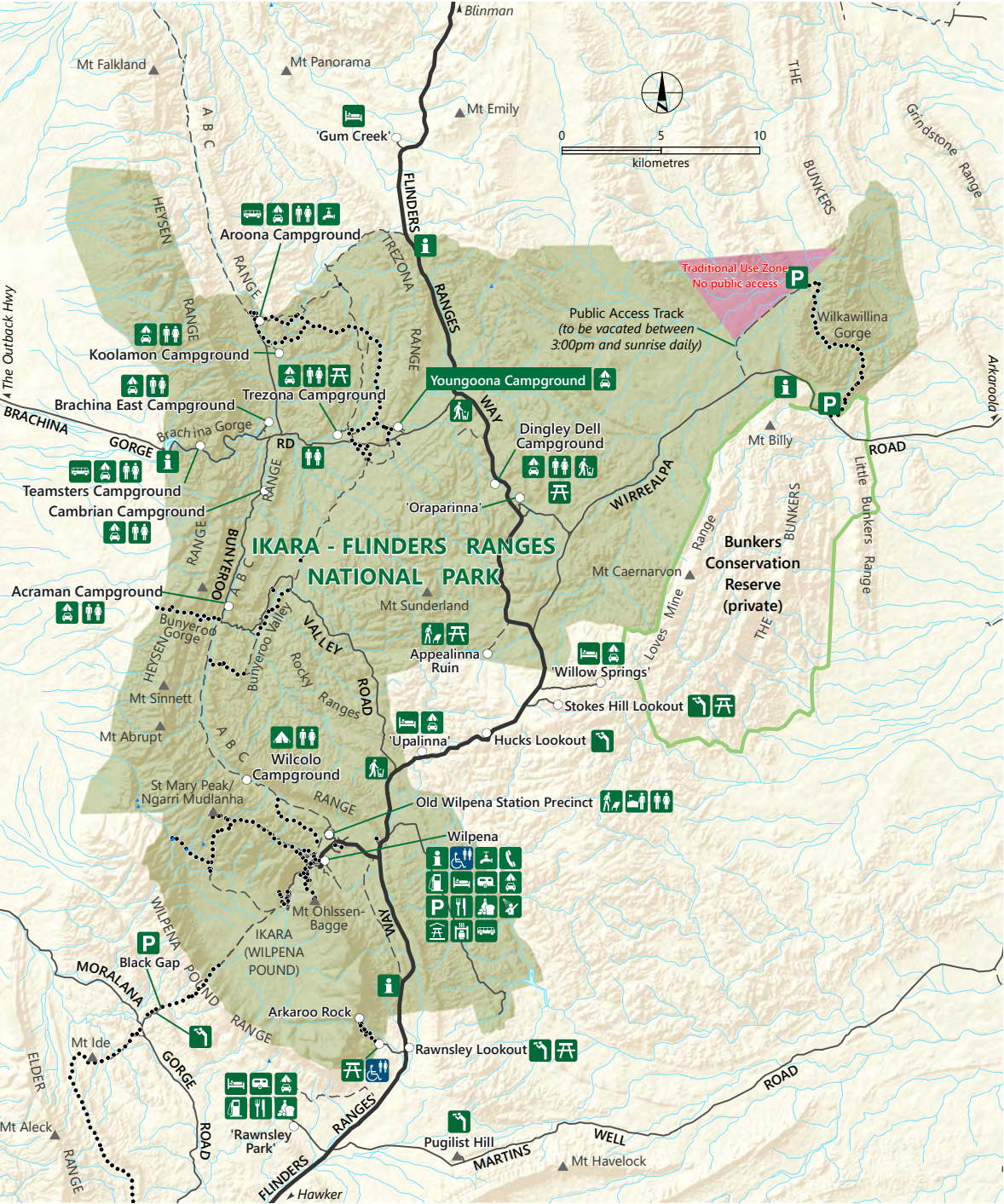
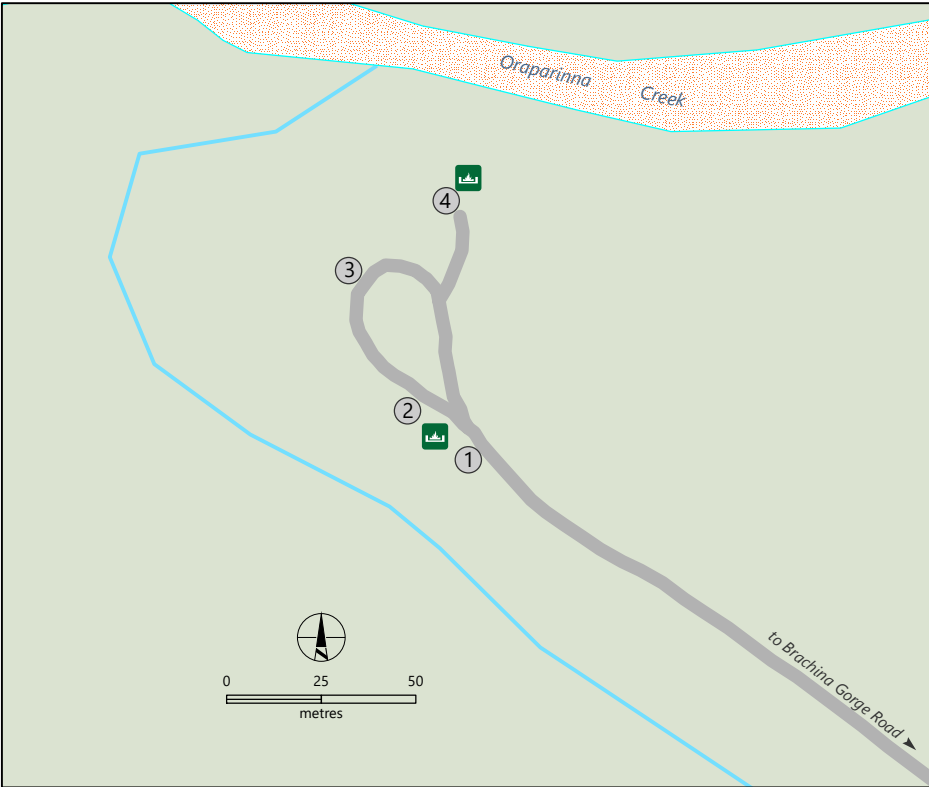


Ikara - Flinders Ranges National Park

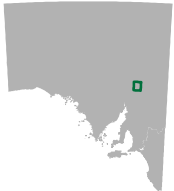


Youngoona Campground



Note: high clearance vehicles recommended for travel on Brachina Gorge Road and for multiple campgrounds including Youngoona campground.

- | | | |
|--------------------------|----------------------------------|---|
| ① Campsite number | Sealed road | Ikara-Flinders Ranges National Park |
| Watercourse - mainly dry | Unsealed road | Other protected area |
| Watercourse | Authorised vehicle access; Track | Traditional Use Zone (no public access) |
| | Walking or shared use trail | |
-
- | | | | |
|---------------|-----------------------------|-----------------------|----------------------|
| Accommodation | Caravan sites | Park information | Showers |
| Barbecue | Fire pit | Parking | Supplies |
| Bus parking | Fuel | Picnic area | Telephone |
| Bush camping | Interpretive trail | Ranger station | Toilets |
| Campground | Lookout / observation point | Rubbish bin | Toilets - accessible |
| | Meals | Sheltered picnic area | Water |



DEW does not guarantee that this map is error free. Use of the map is at the user's sole risk and the information contained on the map may be subject to change without notice. Cartography by DEW, Mapland - 2022

Visit parks.sa.gov.au
Get the Avenza Maps app to use park maps on your phone.
For more information contact:
Department for Environment and Water
E: parks@sa.gov.au
P: 08 8207 7700