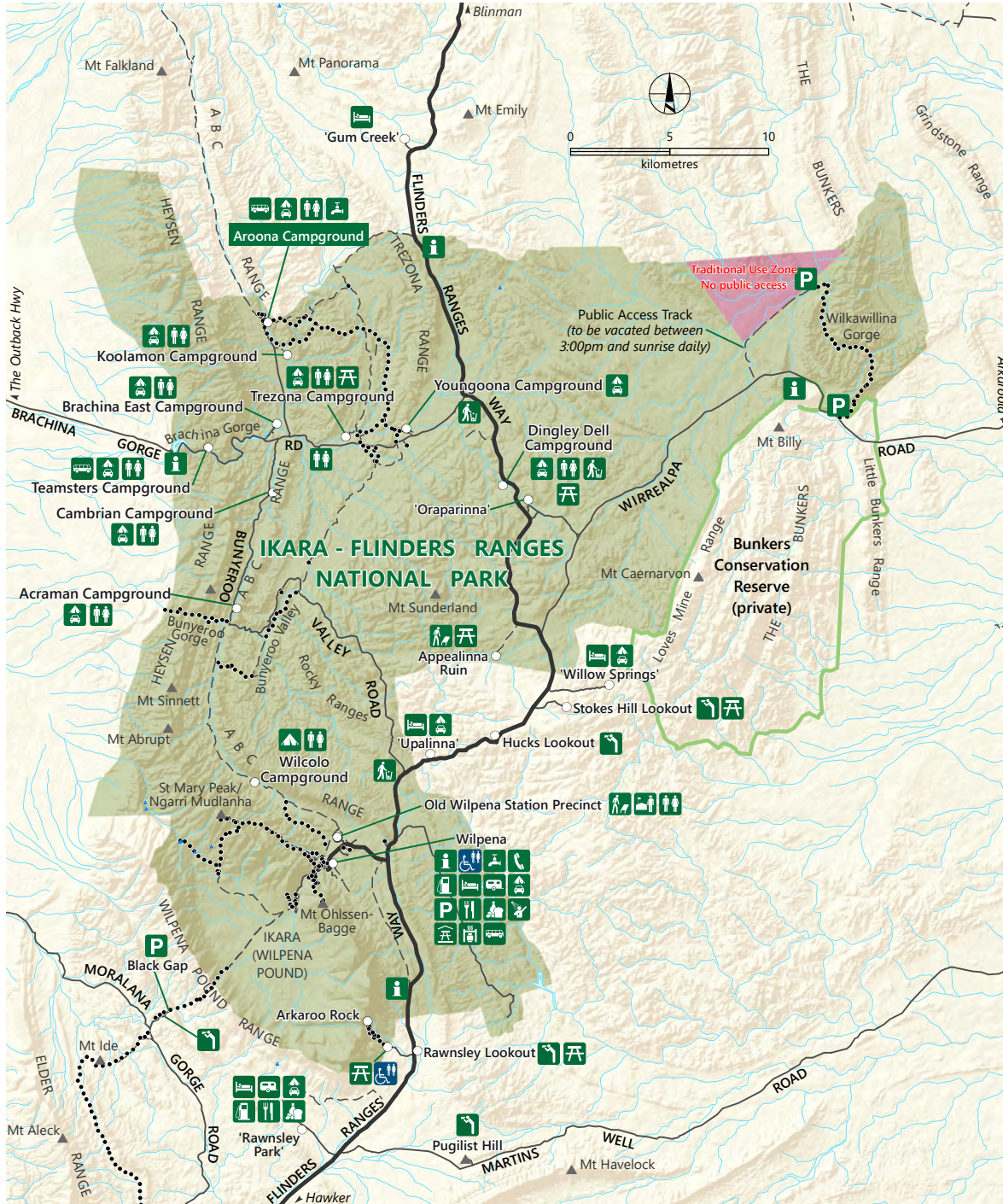
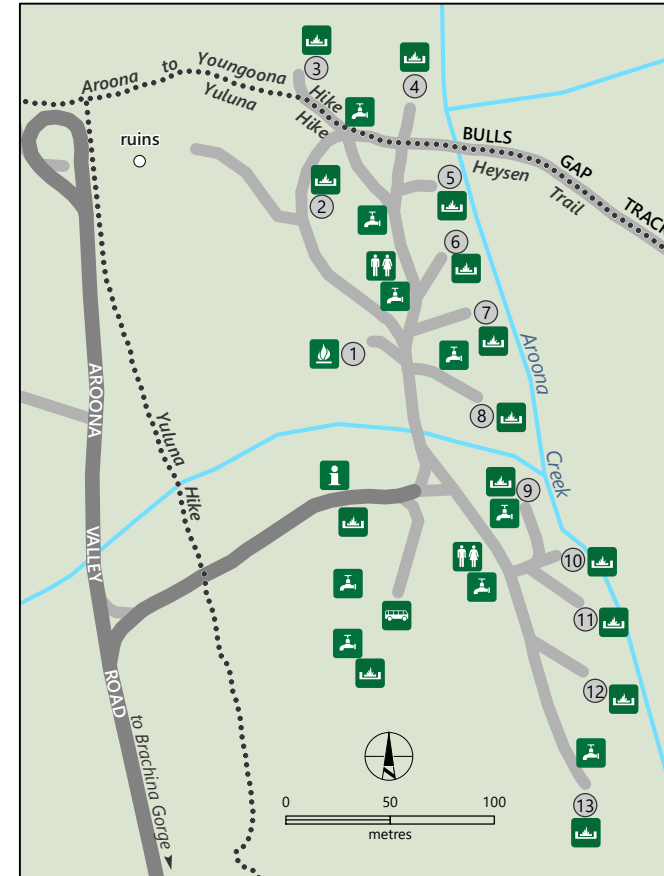


# Ikara - Flinders Ranges National Park



## Aroona Campground



Note: high clearance vehicles recommended for travel on Brachina Gorge Road and for multiple campgrounds including Aroona campground.

- Watercourse
- Sealed road
- Ikara-Flinders Ranges National Park
- Campsite number
- Unsealed road
- Other protected area
- Walking or shared use trail
- Authorised vehicle access; Track
- Traditional Use Zone (no public access)

- Accommodation
- Barbecue
- Bus parking
- Bush camping
- Campground
- Caravan sites
- Fire pit
- Fuel
- Interpretive trail
- Lookout / observation point
- Meals
- Park information
- Parking
- Picnic area
- Ranger station
- Rubbish bin
- Sheltered picnic area
- Showers
- Supplies
- Telephone
- Toilets
- Toilets - accessible
- Water



DEW does not guarantee that this map is error free. Use of the map is at the user's sole risk and the information contained on the map may be subject to change without notice. Cartography by DEW, Mapland - 2022

Visit [parks.sa.gov.au](http://parks.sa.gov.au)  
 Get the Avenza Maps app to use park maps on your phone.  
 For more information contact:  
 Department for Environment and Water  
 E: [parks@sa.gov.au](mailto:parks@sa.gov.au)  
 P: 08 8207 7700