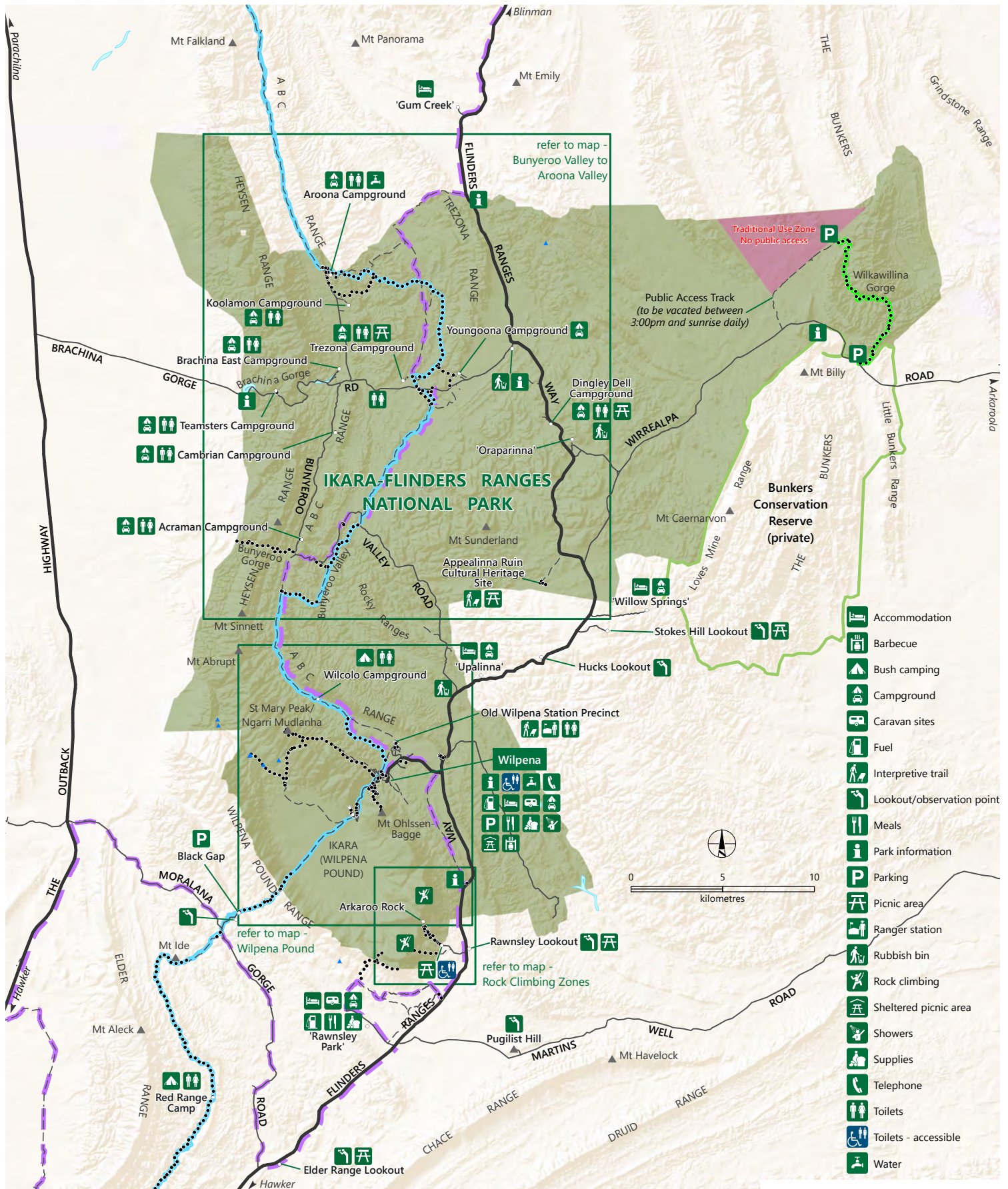
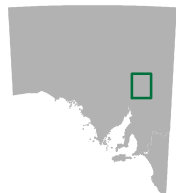


# Ikara - Flinders Ranges National Park



Note: high clearance vehicles recommended for travel on Brachina Gorge Road and for multiple campgrounds. See campground maps.



- Sealed road
- Unsealed road
- - - Vehicular track
- ..... Walking trail

- Heysen Trail
- Mawson Trail
- Wilkawillina Gorge Hike

See enlargement maps for more detail and other hiking trails.

- Traditional Use Zone (no public access)
- Ikara-Flinders Ranges National Park
- Other protected area

DEW does not guarantee that this map is error free. Use of the map is at the user's sole risk and the information contained on the map may be subject to change without notice. Cartography by DEW, Mapland - 2022

Visit [parks.sa.gov.au](https://parks.sa.gov.au)  
Get the Avenza Maps app to use park maps on your phone.

For more information contact:  
Department for Environment and Water  
E: [parks@sa.gov.au](mailto:parks@sa.gov.au)  
P: 08 8207 7700