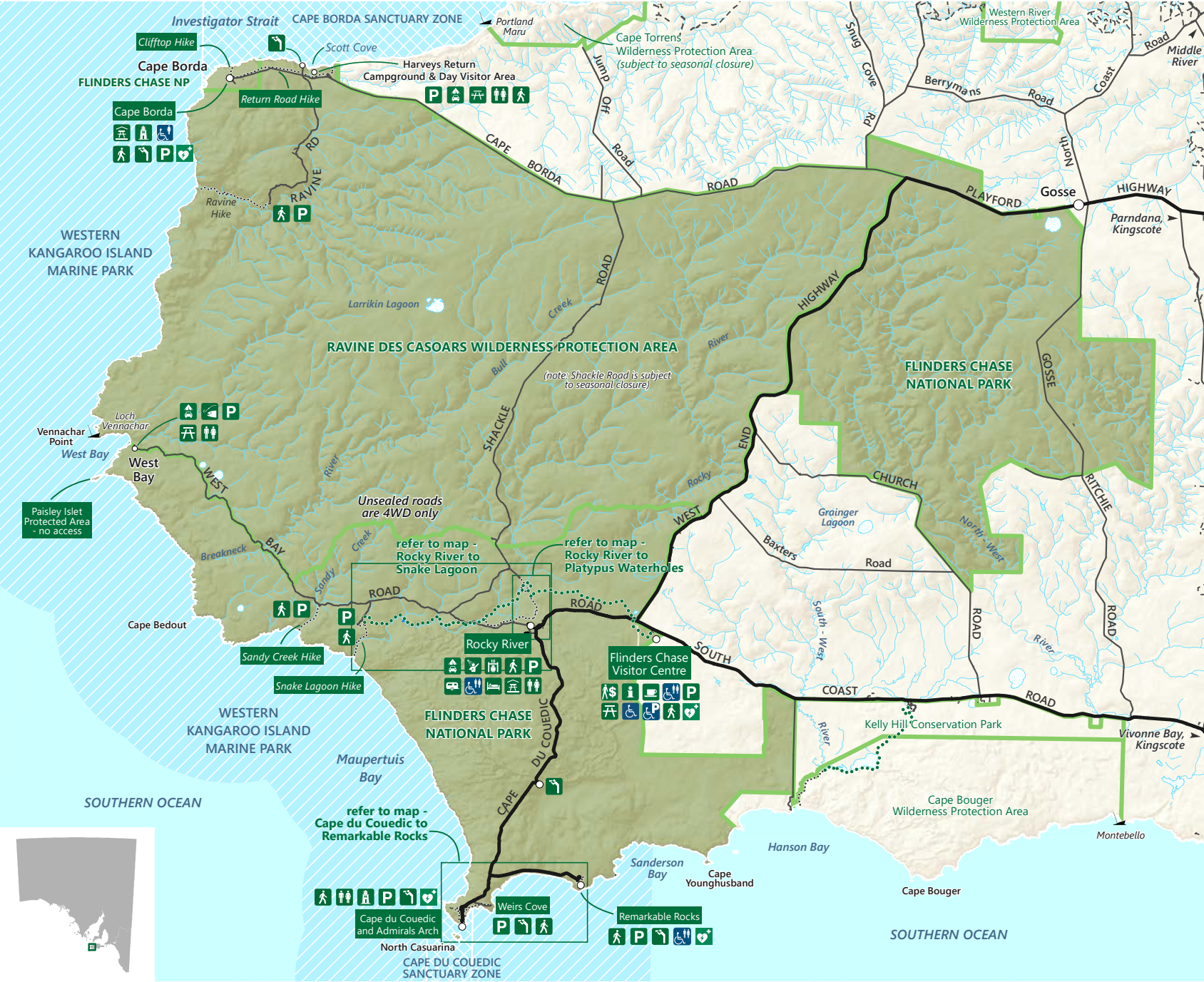


Flinders Chase National Park

Ravine des Casoars Wilderness Protection Area



- | | |
|----------------------------------|-----------------------------|
| Accessible | Lighthouse |
| Accessible parking | Lookout / observation point |
| Accessible toilets | Parking |
| Accommodation | Park entry fee (per person) |
| Automated external defibrillator | Picnic area |
| BBQ facilities | Picnic shelter |
| Campground | Refreshments |
| Caravan sites | Showers |
| Fishing | Toilets |
| Information | Walking trails |

..... Kangaroo Island Wilderness Trail
(Days 1 and 5)

- | | |
|--|------------------------------------|
| Sealed road | Walking trail |
| Unsealed road
May be closed
in wet weather | Park boundary |
| Track | Water - perennial,
intermittent |
| | Waterfall; wreck |

Flinders Chase and
Ravine des Casoars Parks

Marine park

Marine park -
Sanctuary zone



0 5 10
kilometres

Visit parks.sa.gov.au
Get the Avenza Maps app
to use park maps on your phone.
For more information, contact:
Department for Environment and Water
E: parks@sa.gov.au
P: 08 8207 7700

DEW does not guarantee that this map is
error free. Use of the map is at the user's sole
risk and the information contained on the map
may be subject to change without notice.
Cartography by DEW, Mapland - 2025