

Deep Creek National Park

Fun camping activities

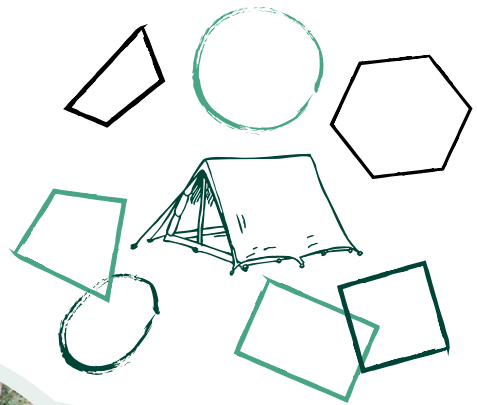


As you drive to your campground, look out for the large messmate stringybarks found throughout the park

Its scientific name is *Eucalyptus obliqua*, named because it has oblique leaves (the leaf bases have unequal lengths).

What other oblique or diagonal things can you find in the campground?


There are many eucalypts in the park (such as messmate, pink gum, cup gum). How many can you find in the campground?



Find some fallen leaves at your campsite and make a picture on the ground



www.parks.sa.gov.au

 www.facebook.com/NPWSSA



Gather a piece of bark and place a piece of paper over it and make a bark rubbing with pencils or crayons



Describe the smells

Are they different in the gullies, forest areas and amongst the bracken ferns?



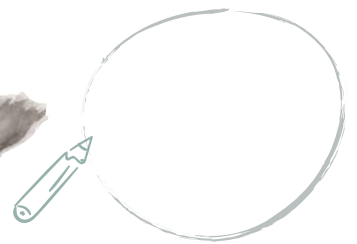
What can you see but can't hear



What can you hear but can't see

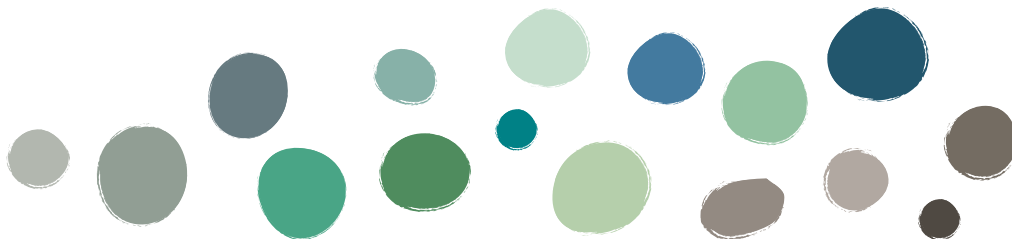
What birds can you see or hear?

Can you make up a story about the superb blue fairy-wren?



Can you find and draw a Yakka?

These plants are adapted to Fire as they can rapidly re-grow from protected buds.



How many of these colours can you find?

www.parks.sa.gov.au

 www.facebook.com/NPWSSA

