

South Australian Marine Park Zoning

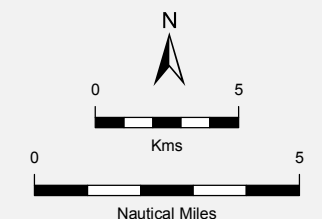
Boundary Definition Southern Kangaroo Island Marine Park Map 00

Marine Park Zoning

- Restricted Access Zone
- Sanctuary Zone
- Habitat Protection Zone

Topographic

- Marine Park Boundary
- Coastal Waters of the State
- Coastline (median high water)
- Major Road



Scale Bar is approximate only

THIS MAP IS INDICATIVE ONLY AND IS NOT INTENDED FOR NAVIGATIONAL PURPOSES

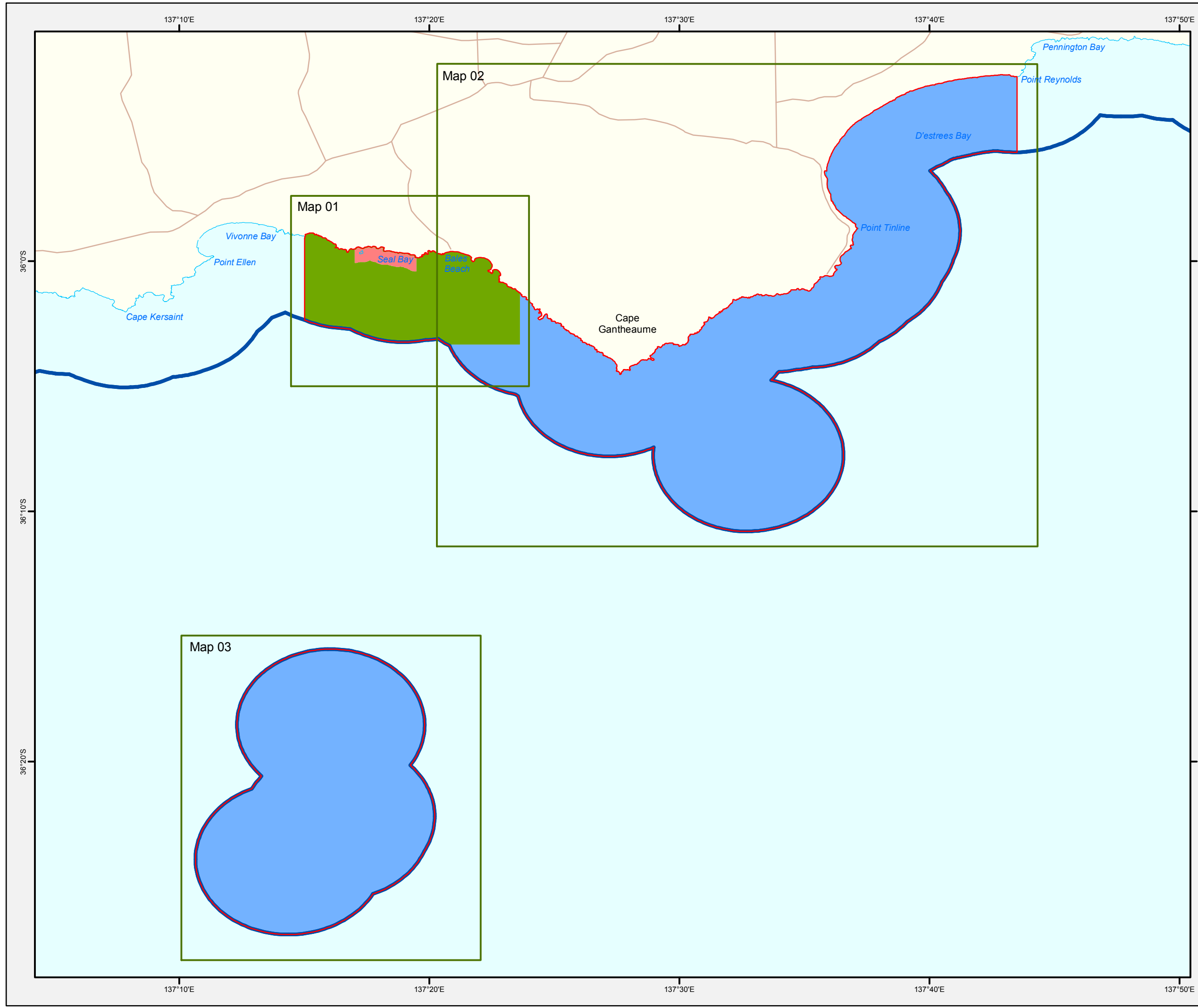


Produced by Marine Parks Project
Department of Environment, Water and Natural Resources
GPO BOX 1047 Adelaide SA 5001
www.marineparks.sa.gov.au

Data Source Marine Parks, Topographic Data,
Coastline (median high water) - DEWNR
(dataset #807, Topography - Coastline, last updated April 2011)
Coastal Waters of the State - Geoscience Australia
(dataset #319, Australian Maritime Boundaries, last updated February 2006)

Compiled 2 November 2012
Projection Geographic
Datum Geocentric Datum of Australia, 1994

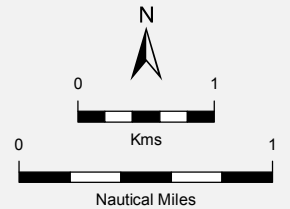
© Copyright Department of Environment, Water and Natural Resources 2012.
All Rights Reserved. All works and information displayed are subject to Copyright. For the reproduction or publication beyond that permitted by the Copyright Act 1968 (Cwth) written permission must be sought from the Department.
Although every effort has been made to ensure the accuracy of the information displayed, the Department, its agents, officers and employees make no representations, either express or implied, that the information displayed is accurate or fit for any purpose and expressly disclaims all liability for loss or damage arising from reliance upon the information displayed.



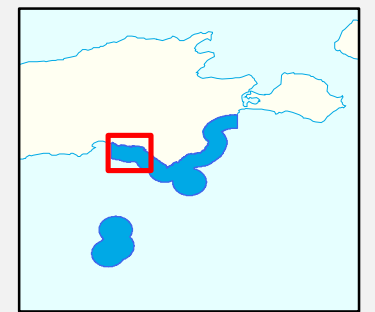
South Australian Marine Park Zoning

Boundary Definition Southern Kangaroo Island Marine Park Map 01 Restricted Access Zone 1 Sanctuary Zone 1

- Marine Park Zoning**
- Restricted Access Zone
 - Sanctuary Zone
 - Habitat Protection Zone
- Topographic**
- Existing Reserves under other Acts
 - Marine Park Boundary
 - DCDB Parcel
 - Coastal Waters of the State
 - Coastline (median high water)
 - Sealed Road
 - Unsealed Road
 - Vehicular Track



THIS MAP IS INDICATIVE ONLY AND IS NOT INTENDED FOR NAVIGATIONAL PURPOSES



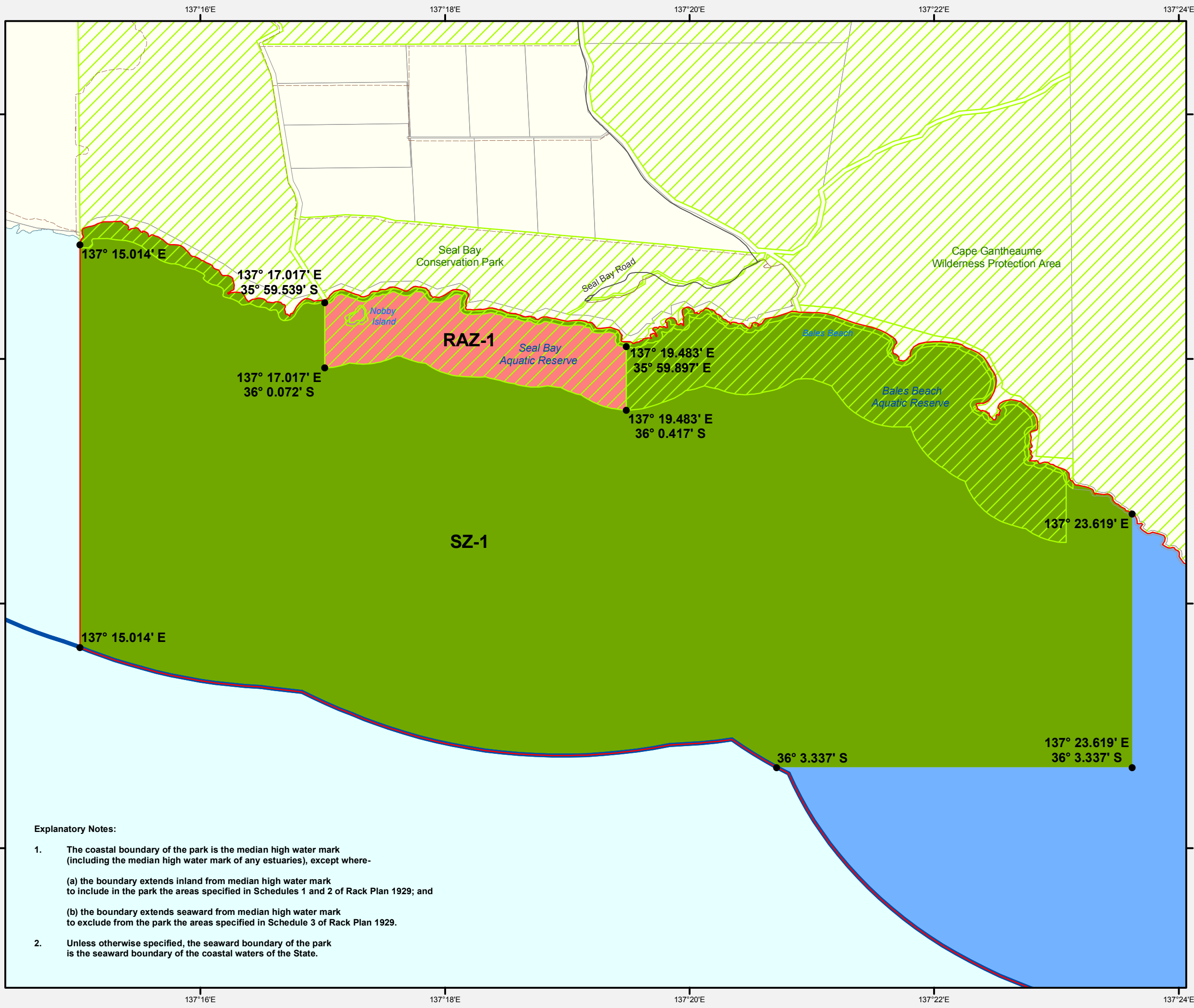
Produced by Marine Parks Project
Department of Environment, Water and Natural Resources
GPO BOX 1047 Adelaide SA 5001
www.marineparks.sa.gov.au

Data Source
Marine Parks, NPWSA, Topographic Data
Coastline (median high water) - DEWNR (dataset #807, Topography - Coastline, last updated April 2011)
DCDB - DPTI, Aquatic Reserves - PIRSA
Coastal Waters of the State - Geoscience Australia (dataset #319, Australian Maritime Boundaries, last updated February 2006)
2 November 2012

Compiled Projection Datum
Geographic
Geocentric Datum of Australia, 1994

© Copyright Department of Environment, Water and Natural Resources 2012. All Rights Reserved. All works and information displayed are subject to Copyright. For the reproduction or publication beyond that permitted by the Copyright Act 1968 (Cwth) written permission must be sought from the Department.

Although every effort has been made to ensure the accuracy of the information displayed, the Department, its agents, officers and employees make no representations, either express or implied, that the information displayed is accurate or fit for any purpose and expressly disclaims all liability for loss or damage arising from reliance upon the information displayed.



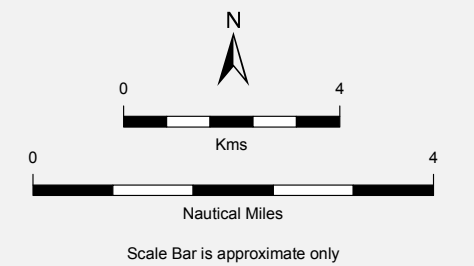
Explanatory Notes:

1. The coastal boundary of the park is the median high water mark (including the median high water mark of any estuaries), except where-
 - (a) the boundary extends inland from median high water mark to include in the park the areas specified in Schedules 1 and 2 of Rack Plan 1929; and
 - (b) the boundary extends seaward from median high water mark to exclude from the park the areas specified in Schedule 3 of Rack Plan 1929.
2. Unless otherwise specified, the seaward boundary of the park is the seaward boundary of the coastal waters of the State.

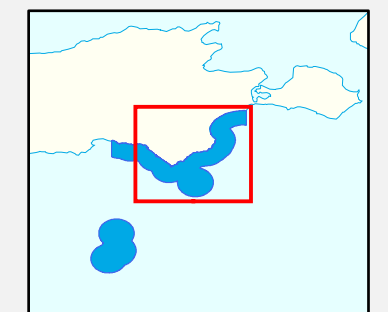
South Australian Marine Park Zoning

Boundary Definition Southern Kangaroo Island Marine Park Map 02 Habitat Protection Zone 1

- Marine Park Zoning**
- Sanctuary Zone
 - Habitat Protection Zone
- Topographic**
- Existing Reserves under other Acts
 - Marine Park Boundary
 - DCDB Parcel
 - Coastal Waters of the State
 - Coastline (median high water)
 - Vehicular Track



THIS MAP IS INDICATIVE ONLY AND IS NOT INTENDED FOR NAVIGATIONAL PURPOSES



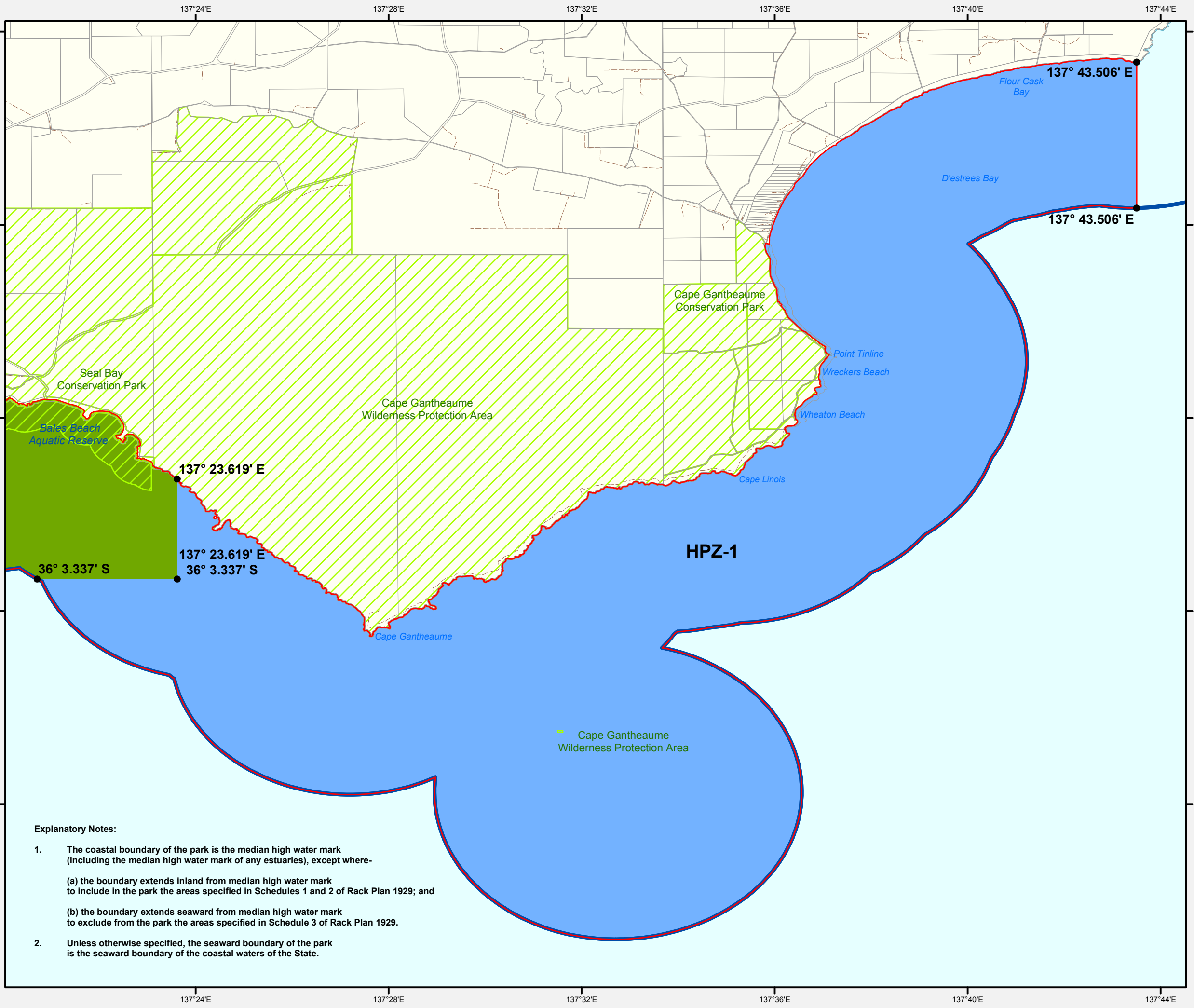
Produced by Marine Parks Project
Department of Environment, Water and Natural Resources
GPO BOX 1047 Adelaide SA 5001
www.marineparks.sa.gov.au

Data Source
Marine Parks, NPWSA, Topographic Data
Coastline (median high water) - DEWNR (dataset #807, Topography - Coastline, last updated April 2011)
DCDB - DPTI, Aquatic Reserves - PIRSA
Coastal Waters of the State - Geoscience Australia (dataset #319, Australian Maritime Boundaries, last updated February 2006)
31 October 2012

Compiled Projection Datum
Geographic
Geocentric Datum of Australia, 1994

© Copyright Department of Environment, Water and Natural Resources 2012. All Rights Reserved. All works and information displayed are subject to Copyright. For the reproduction or publication beyond that permitted by the Copyright Act 1968 (Cwth) written permission must be sought from the Department.

Although every effort has been made to ensure the accuracy of the information displayed, the Department, its agents, officers and employees make no representations, either express or implied, that the information displayed is accurate or fit for any purpose and expressly disclaims all liability for loss or damage arising from reliance upon the information displayed.



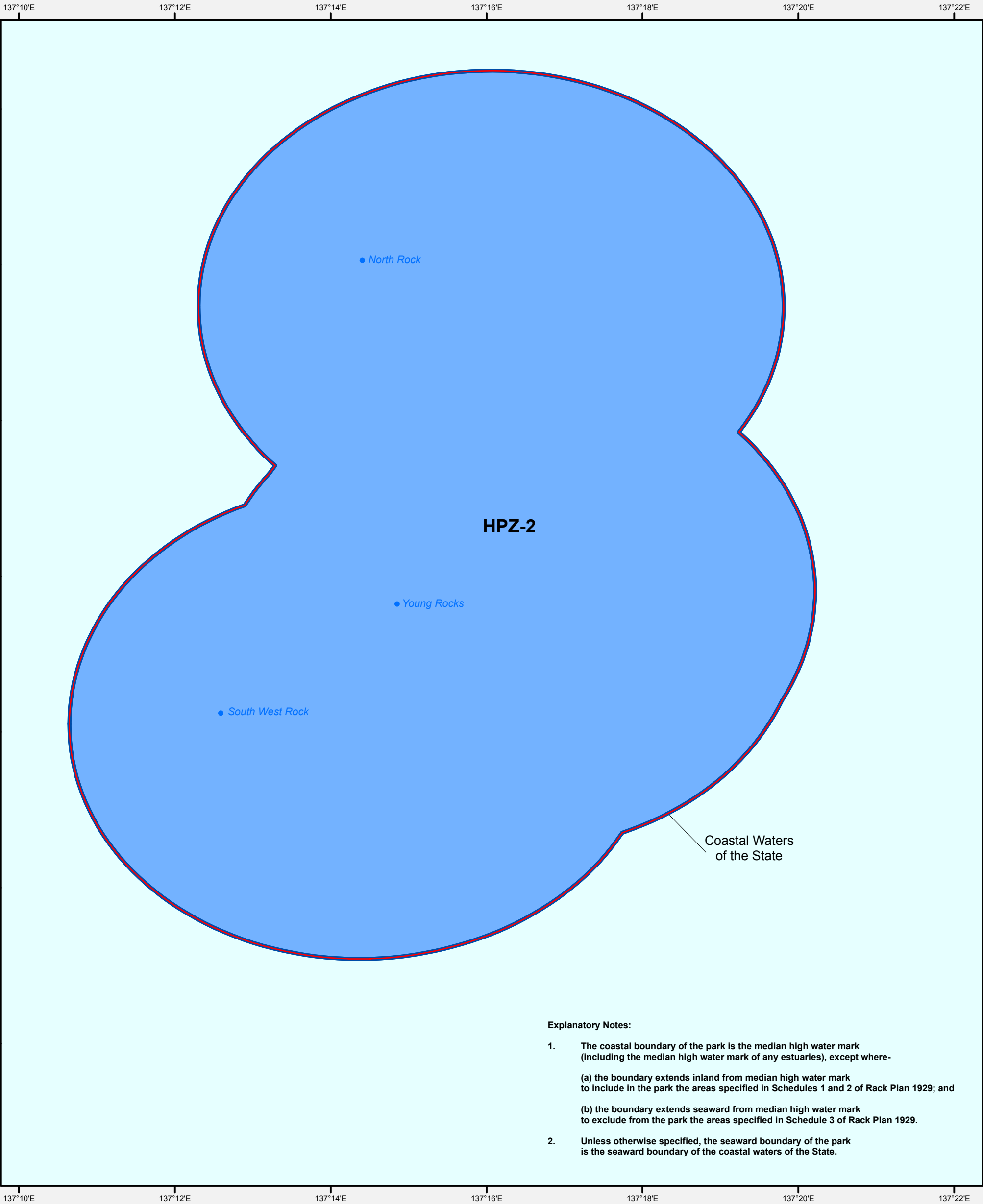
Explanatory Notes:

1. The coastal boundary of the park is the median high water mark (including the median high water mark of any estuaries), except where-
 - (a) the boundary extends inland from median high water mark to include in the park the areas specified in Schedules 1 and 2 of Rack Plan 1929; and
 - (b) the boundary extends seaward from median high water mark to exclude from the park the areas specified in Schedule 3 of Rack Plan 1929.
2. Unless otherwise specified, the seaward boundary of the park is the seaward boundary of the coastal waters of the State.

South Australian Marine Park Zoning

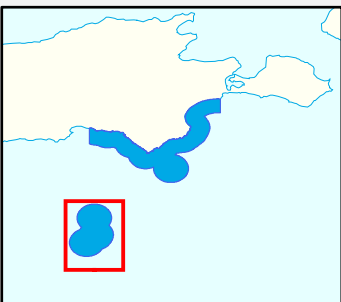
Boundary Definition - Southern Kangaroo Island Marine Park

Map 03 - Habitat Protection Zone 2

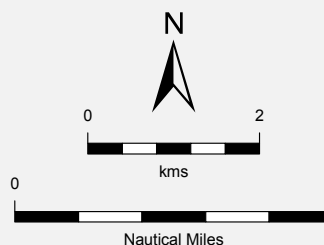


Explanatory Notes:

1. The coastal boundary of the park is the median high water mark (including the median high water mark of any estuaries), except where-
 - (a) the boundary extends inland from median high water mark to include in the park the areas specified in Schedules 1 and 2 of Rack Plan 1929; and
 - (b) the boundary extends seaward from median high water mark to exclude from the park the areas specified in Schedule 3 of Rack Plan 1929.
2. Unless otherwise specified, the seaward boundary of the park is the seaward boundary of the coastal waters of the State.



- Marine Park Zoning**
- Habitat Protection Zone
- Topographic**
- Marine Park Boundary
 - Coastal Waters of the State



Scale Bar is approximate only

Produced by Marine Parks Project
 Department of Environment, Water and Natural Resources
 GPO BOX 1047 Adelaide SA 5001
www.marineparks.sa.gov.au

Data Source Marine Parks - DEWNR
 Coastal Waters of the State - Geoscience Australia
 (dataset #319, Australian Maritime Boundaries, last updated February 2006)

Compiled 31 October 2012
Projection Geographic
Datum Geocentric Datum of Australia, 1994

© Copyright Department of Environment, Water and Natural Resources 2012. All Rights Reserved. All works and information displayed are subject to Copyright. For the reproduction or publication beyond that permitted by the Copyright Act 1968 (Cwth) written permission must be sought from the Department.

Although every effort has been made to ensure the accuracy of the information displayed, the Department, its agents, officers and employees make no representations, either express or implied, that the information displayed is accurate or fit for any purpose and expressly disclaims all liability for loss or damage arising from reliance upon the information displayed.

THIS MAP IS INDICATIVE ONLY AND IS NOT INTENDED FOR NAVIGATIONAL PURPOSES

Southern Kangaroo Island Marine Park

Sanctuary Zone Coordinates

November 2012



Explanatory Notes

- The coastal boundary of the park is the median high water mark (including the median high water mark of any estuaries), except where:
 - the boundary extends inland from median high water mark to include in the park the areas specified in Schedules 1 and 2 of the Rack Plans
 - the boundary extends seaward from median high water mark to exclude from the park the areas specified in Schedule 3 of the Rack Plans.
- Unless otherwise specified, the seaward boundary of the park is the seaward boundary of the coastal waters of the State.
- The state border is as advised by the Surveyor-General.

Zone Code	LONGITUDE Degrees Decimal Minutes	LATITUDE Degrees Decimal Minutes
RAZ-1	Restricted Access Zone 1 is Seal Bay Aquatic Reserve, excluding beach.	
	137° 17.017' E	35° 59.539' S
	137° 19.483' E	35° 59.897' S
	137° 19.483' E	36° 0.417' S
SZ-1	137° 17.017' E	36° 0.072' S
	137° 15.014' E	35° 59.066' S
	137° 23.619' E	36° 1.265' S
	137° 23.619' E	36° 3.337' S
	137° 20.713' E	36° 3.337' S
	137° 15.014' E	36° 2.358' S

Disclaimer: For the Marine Park Zoning Coordinates it is the responsibility of the individual to ensure they have the latest information as it becomes available. Although every effort has been made to ensure the accuracy of the information displayed, the Department, its agents, officers and employees make no representations, either expressed or implied, that the information displayed is accurate or fit for any purpose and expressly disclaims all liability for loss or damage arising from reliance upon the information displayed. The Department of Environment, Water and Natural Resources reserves the right to correct, update, modify or replace GIS products without notification. Using GIS data for purposes other than those for which they were created may yield inaccurate or misleading results. The recipient may neither assert any proprietary rights to this information nor represent it to anyone as other than South Australian Government produced information. Department of Environment, Water and Natural Resources shall not be liable for any activity involving this information with respect to lost profits, lost savings or any other consequential damages.



Government
of South Australia