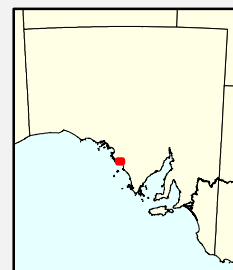
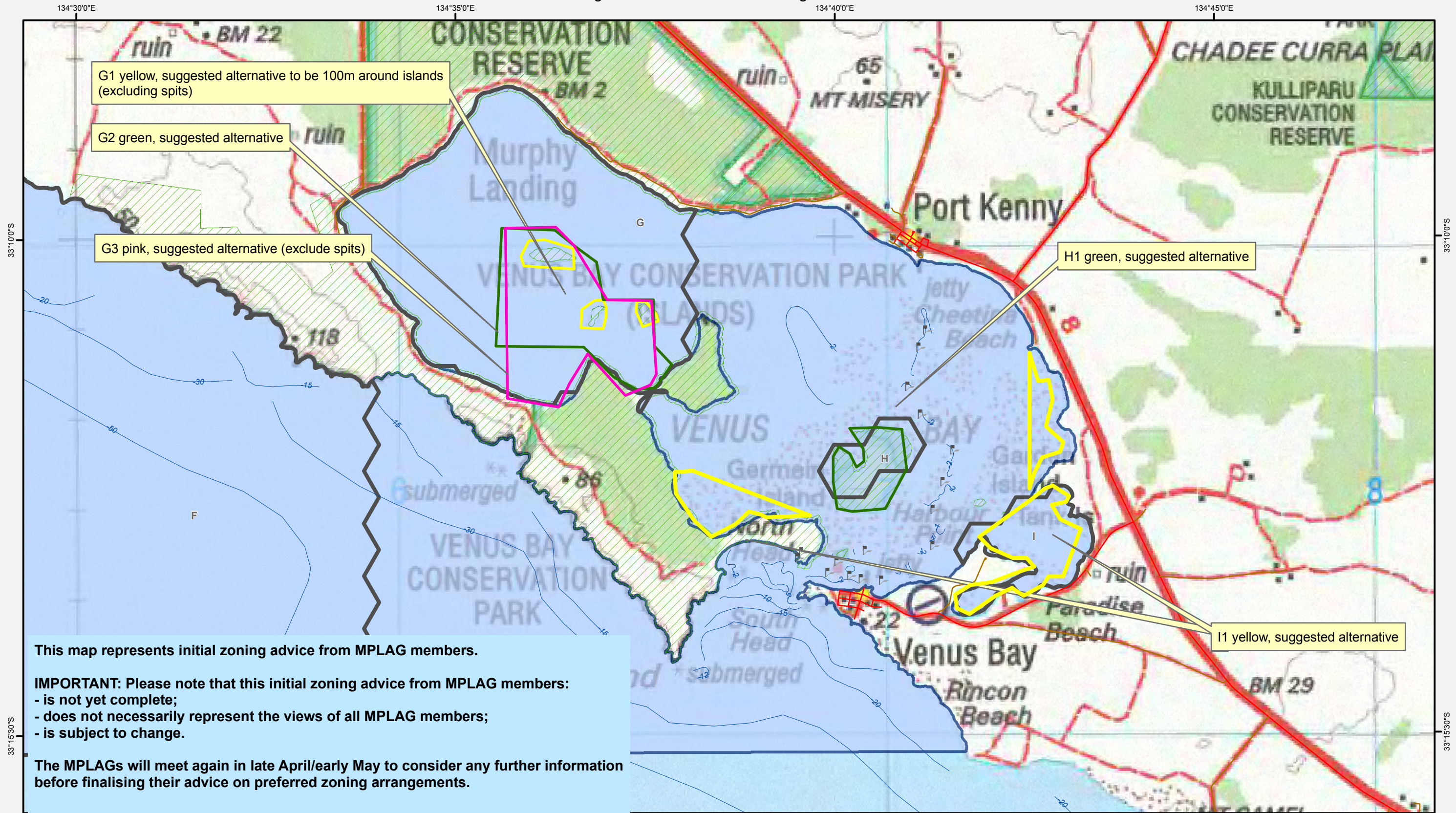
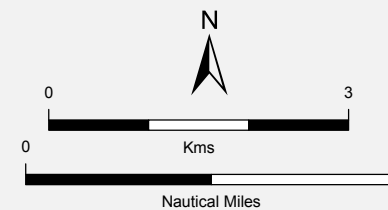


West Coast Bays Marine Park - PART B
Zoning Advice from MPLAG Meeting 4 - 22/2/2011



- Parks and Reserves
- Preliminary Zoning Scenarios
- Marine Park
- Bathymetry
- Navigation Markers

- MPLAG Suggestions
- MPLAG Suggestions
- MPLAG Suggestions



Data Source
Compiled
Projection
Datum

Suggestions - MPLAG
Topographic Data, Parks and Reserves,
Bathymetry - DENR
24 February 2011
Lambert Conformal Conic
Geocentric Datum of Australia, 1994

Marine Park: West Coast Bays PART B

Date of meeting: 22/02/2011

Note:

- 1) *These comments should be read in conjunction with the feedback map.*
- 2) *Unless the alternative sanctuary zones had 'consensus' or 'majority support' written alongside of the advice, then they should not be considered to have the majority support of the MPLAG group*

Zone	Comment number (or colour)	Comment
G	G1 (yellow)	100m sanctuary zones around the 3 islands excluding spits off the eastern side.
	G2 (green)	An alternative to advice G1 – expand.
	G3 (pink)	An alternative to advice G1 and G2 – expand and include the shoreline to the south. Monument a landmark in the boundary SE corner, sandhills a boundary landmark in the SW corner. Exclude spits on eastern side of the islands (cockles). Majority support.
H	H1 (green)	Define the boundary to the low tide mark.
I	I1 (yellow)	In response to habits not included in suggestions for zone G, alternative areas inside Venus Bay with least impact were suggested, which included expanding zone I and adding an additional area. Concerns raised about the adequacy of different types of bottom and habitats being represented