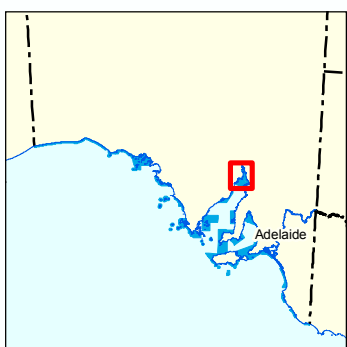
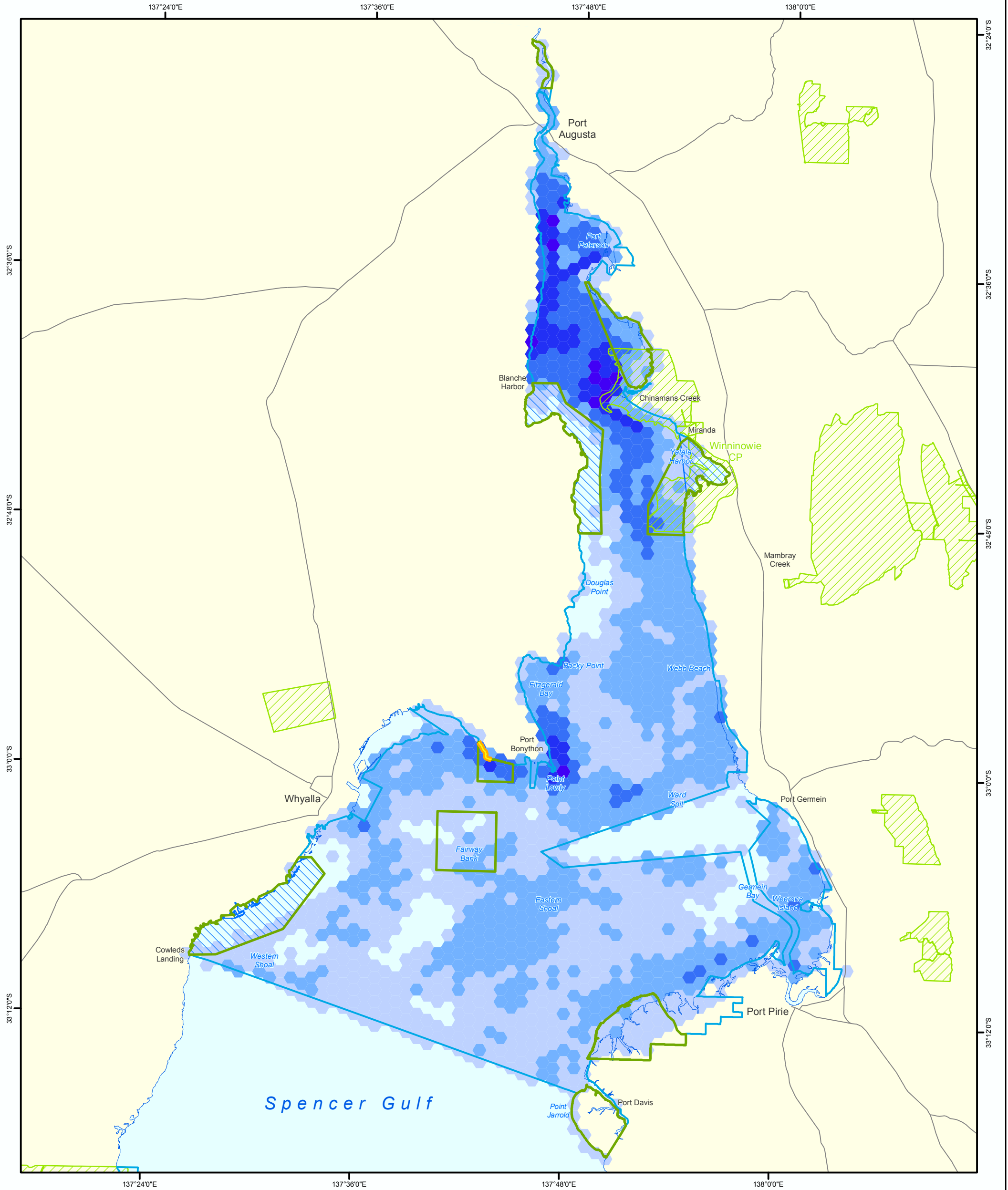
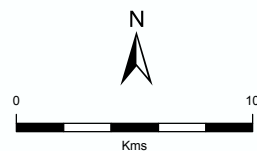


Upper Spencer Gulf Marine Park

Marine Park Sanctuary Zones over high use fishing areas (SAMPIT 2010)



- | | |
|-----------------------|--|
| Low Fishing Effort | NPWSA Reserve |
| Medium Fishing Effort | Aquatic Reserve |
| High Fishing Effort | Sanctuary Zone |
| | Marine Park |
| | Special Purpose Area (shore-based recreational line fishing allowed) |
| | Major Road |
| | Coastline (median high watermark) |



Produced by Science, Monitoring and Knowledge Branch
for Marine Parks Project
Department of Environment, Water and Natural Resources
GPO Box 1047 Adelaide SA 5001
www.marineparks.sa.gov.au

Data Source Topographic, Marine Park, NPWSA Reserve, Marine Park Zoning, Special Purpose Area and SAMPIT 2010 data - DEWNR
Aquatic Reserve data - PIRSA

Compiled 28 January, 2014

Projection Lambert Conformal Conic

Datum Geocentric Datum of Australia, 1994

© Copyright Department of Environment, Water and Natural Resources 2014. All Rights Reserved. All works and information displayed are subject to Copyright. For the reproduction or publication beyond that permitted by the Copyright Act 1968 (Cwth) written permission must be sought from the Department. Although every effort has been made to ensure the accuracy of the information displayed, the Department, its agents, officers and employees make no representations, either express or implied, that the information displayed is accurate or fit for any purpose and expressly disclaims all liability for loss or damage arising from reliance upon the information displayed.

