

SA Marine Parks Sanctuary Zone Maps

July 2016



**National
Parks**
South
Australia

Foreword

Many of us have wonderful memories of childhoods spent at the beach. With so much beautiful coastline available to us, we have been blessed to be able to spend summers swimming, fishing, surfing and boating.

Oceans worldwide are now under increasing pressure from population growth, pollution and climate change. These are serious challenges and South Australia is not immune. If we want our children and grandchildren to enjoy the same marine environment we have grown up loving, we need to act now to protect it.

Our state's 19 marine parks were shaped by one of the state's biggest public consultation processes. It took into account evidence from some of Australia's top marine scientists, the concerns of environmental groups, as well as the views of everyday South Australians, recreational and commercial fishers and a range of other stakeholders.

Marine parks will work like national parks on land to help conserve some of our most important marine habitats and species.

The zoning within each marine park will still enable all of us to enjoy our favourite activities, including fishing.

It's only in the sanctuary zones inside our marine parks where fishing and some other activities are not allowed. These sanctuary zones represent just 6 per cent of state waters and include critically important breeding and nursery areas for some of our best-loved marine life. Evidence from overseas and interstate shows the benefits of sanctuary zones, including benefits to fishers in surrounding waters.

Restrictions on fishing in sanctuary zones came into effect on 1 October 2014. There are no changes to existing access at jetties, breakwaters, boat ramps and most popular beaches.

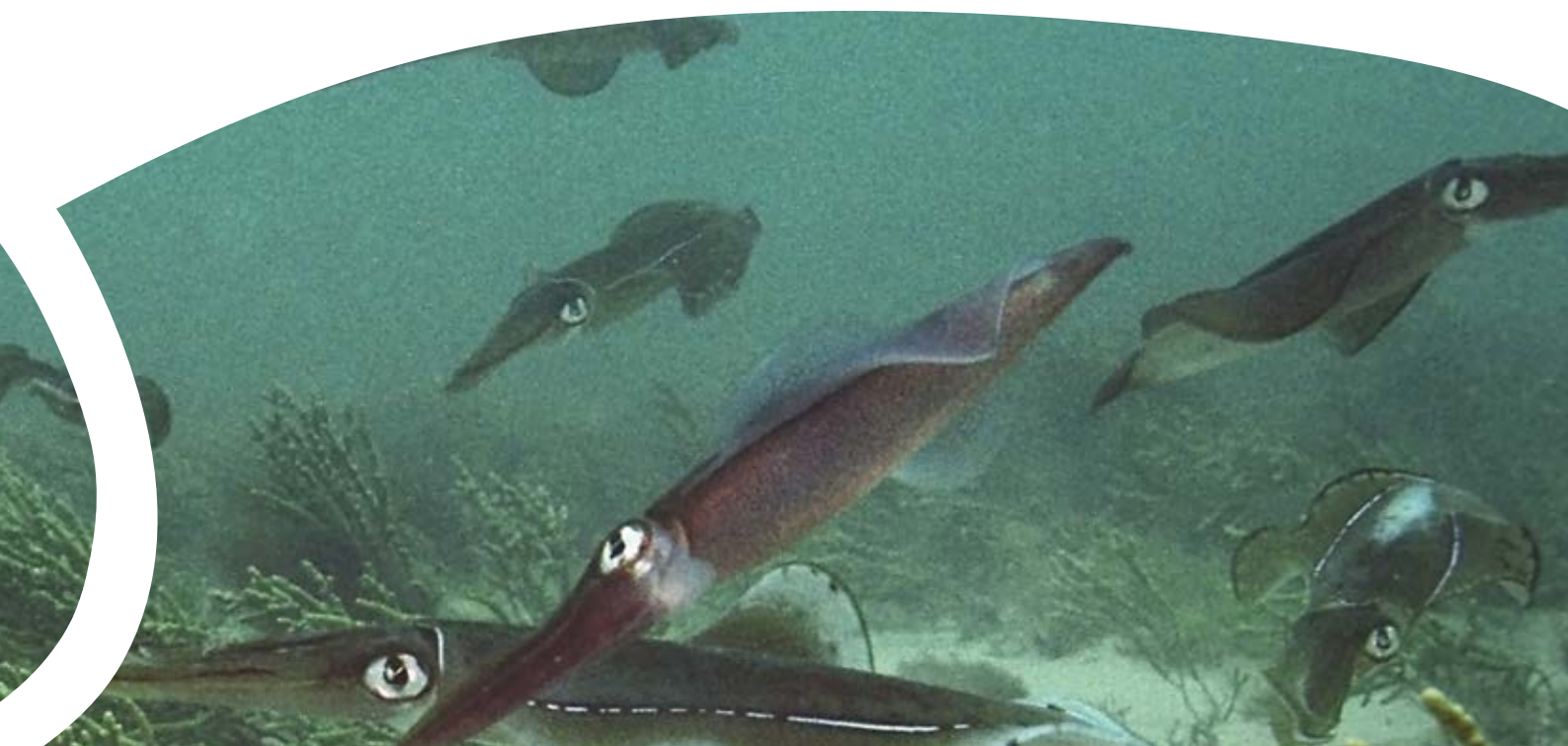
This guide has been designed to assist recreational fishers in understanding the zoning, and provide maps with GPS coordinates.

Enjoy your fishing.



Contents

Background	4 - 5
South East	6 - 7
Fleurieu Peninsula	8 - 9
Kangaroo Island	10 - 11
Yorke Peninsula	12 - 13
Upper Spencer Gulf	14 - 15
Lower Eyre Peninsula	16 - 17
West Coast	18 - 19
Far West Coast	20 - 21
Great Australian Bight	22 - 23



Background

Understanding the zones

Each marine park is made up of four main zones. These are:

- General managed use zones.
- Habitat protection zones.
- Sanctuary zones.
- Restricted access zones.

On these maps the sanctuary zones are shown in green, these are areas of high conservation value that have been set aside for conservation and recreation. No fishing or removal of plants or animals is allowed in sanctuary zones, however recreational activities such as boating, diving, surfing and swimming are welcome. These maps also show, in red, the restricted access zones that were in place prior to the marine parks. These maps are supported by other products, including:

- A series of detailed maps and GPS data on the website.
- A smart phone app.
- Sanctuary zone signage at selected shore-based locations.

Sanctuary zones and why they were chosen

Sanctuary zones in South Australia's marine parks protect a range of animals and plants. Some protect seals, whales and sea lions, while others protect shark breeding areas and even birds. But many also protect places that are important to the future of recreational fishing.

Here are a few examples.

Upper Gulf St Vincent – a key fish breeding nursery of statewide importance protecting mangroves, saltmarsh and seagrass beds that provide homes for juvenile fish including garfish, whiting and blue swimmer crabs.

Offshore Ardrossan – snapper spawning ground.

Point Davenport – an important estuarine area that helps support a range of juvenile fish, including whiting.

Cape Elizabeth – squid spawning grounds.

Franklin Harbor – whiting nursery area.

Light River Delta – a significant nursery habitat for fish and one of the best-preserved mangrove estuary systems in South Australia.

Orcades Bank – King George whiting spawning grounds in Investigator Strait.

South Australian fishing regulations

In addition to the Marine Park sanctuary zones, South Australian recreational fishers also need to be aware of other rules and regulations. These include:

- Size, bag, boat and possession limits which determine the size and the number of fish that can be taken.
- Limits on the fishing gear you can use.
- Seasonal closures and Aquatic Reserves that restrict when and where you can fish.
- Protection of some fish species.
- Prohibition of the removal of any bottom dwelling organisms from all intertidal rocky reefs in South Australia. This area is measured from the high water mark to a water depth of 2 metres.

While we want everyone to enjoy their fishing, it is also important that all recreational fishers are fully informed about their obligations so they can play their part in ensuring that there is plenty of fish for everyone to share into the future.

More information on recreational fishing rules and regulations is available at www.pir.sa.gov.au/fishing or through the SA Recreational Fishing Guide smartphone app (*see next page*).

Suspicious or illegal fishing behaviour can be reported to the 24-hour FISHWATCH number on 1800 065 522. Callers can choose to remain anonymous.

Frequently asked questions about sanctuary zones:

Question	Answer
Can I drive a boat through or in a sanctuary zone?	Yes
Can I anchor in a sanctuary zone?	Yes
Are motorised water sports (water skiing, parasailing, jet skiing, etc.) allowed in sanctuary zones?	No (except jet skis can be driven straight through at less than 35 knots)
Can I be in a sanctuary zone with fishing gear?	Yes, as long as it is not being used
Can I be in a sanctuary zone with fish in my boat?	Yes
What is the fine for fishing in a sanctuary zone?	The expiation fee is \$315. However, all recreational line fishers are entitled to a warning for their first offence
Can I dive in a sanctuary zone?	Yes, as long as nothing is disturbed or removed
Can I fish from jetties?	Yes, marine parks do not change existing jetty fishing access
Can I shore-fish in a sanctuary zone?	In some yes, but in others no. The maps show where shore fishing is allowed
Am I able to fish just outside of a sanctuary zone?	Yes
Will other zones within a marine park, such as habitat protection zones, become sanctuary zones in the future?	Not without full public consultation and the approval of both Houses of Parliament. This is a requirement of the <i>Marine Parks Act 2007</i>

Smart phone app



Getting the latest information on South Australia's sanctuary zoning and recreational fishing rules has now just been made easier with the **FREE SA Recreational Fishing Guide** app.

The SA Fishing app is a one stop shop for everyone to access information and maps on fishing in South Australia from the convenience of their Apple and Android mobile devices.

Full details can be found at:

<http://www.pir.sa.gov.au/recfishingapp>

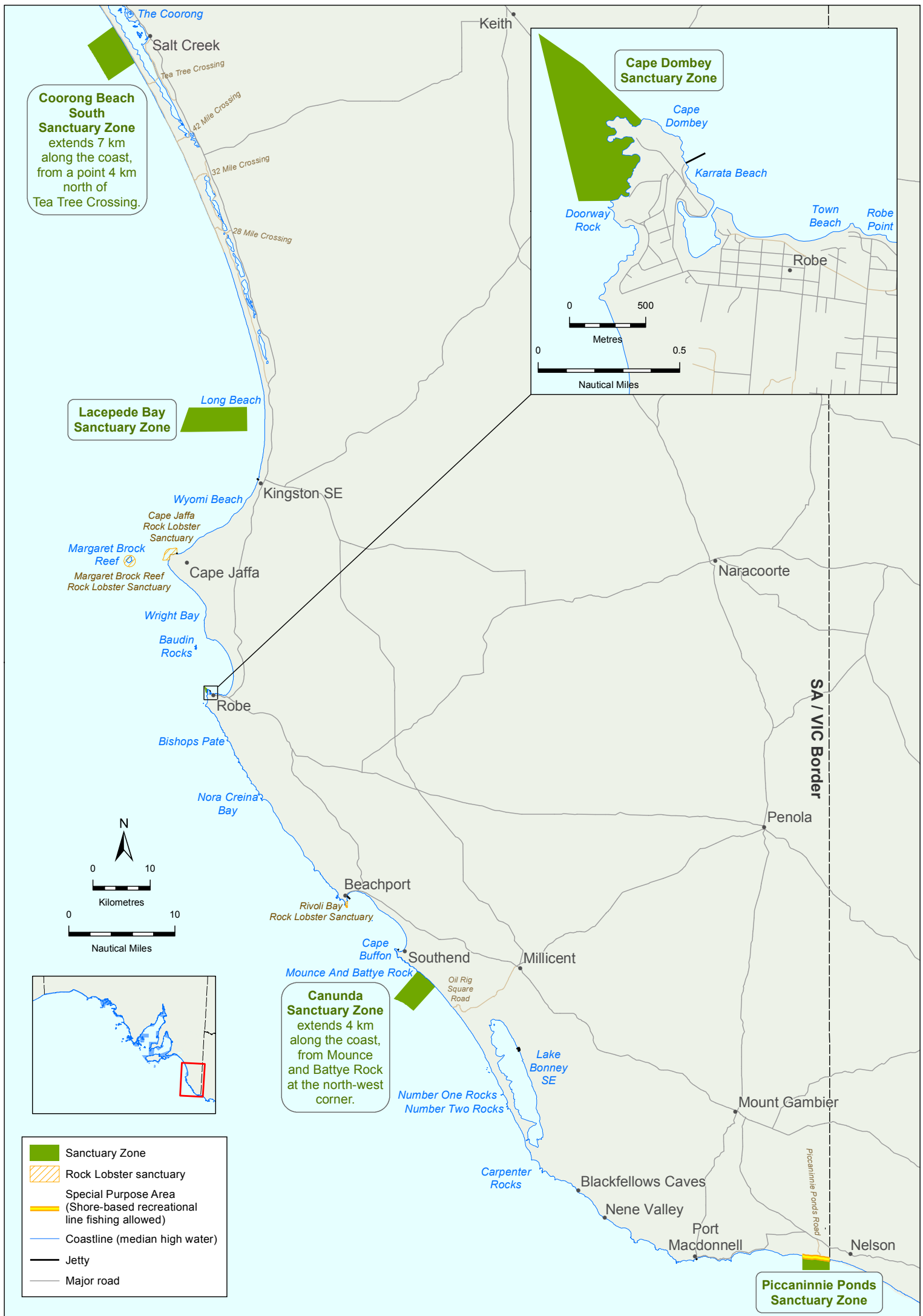
Downloadable GPS coordinates and more detailed maps are available on our website: **www.marineparks.sa.gov.au**. Please refer to back cover for disclaimer and copyright information.



For basic mapping functions, simply go to your App Store or Play Store to download then:

1. Open the app, click on "Closures" (bottom centre).
2. Then select "Closures Mapping" (top centre).
3. You can now navigate around the state, the blue dot shows your location, the green zones indicate the sanctuary zones.

For more detailed instructions on using the app please visit our website or call your local Natural Resource Centre (contact details on the back cover).



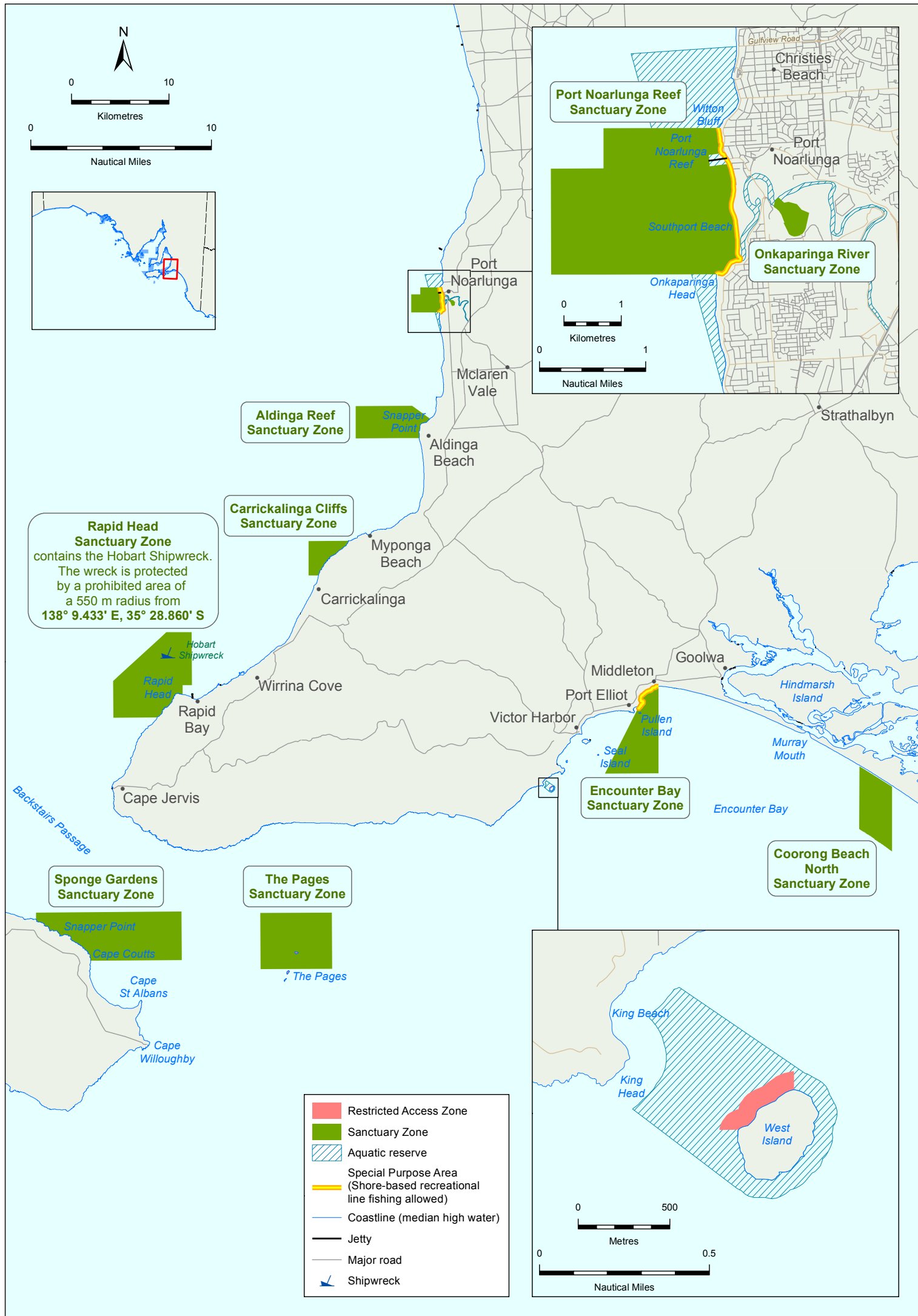
South East

Sanctuary Zones (SZ)

Upper South East Marine Park	
Longitude Degrees Decimal Minutes	Latitude Degrees Decimal Minutes
Coorong Beach South (Park 18: SZ-1)	
139° 34.624' E	36° 6.650' S
139° 37.103' E	36° 10.094' S
139° 33.997' E	36° 11.727' S
139° 31.600' E	36° 8.382' S
Lacepede Bay (Park 18: SZ-2)	
139° 42.895' E	36° 42.715' S
139° 49.705' E	36° 42.715' S
139° 49.705' E	36° 45.000' S
139° 41.845' E	36° 45.000' S
Cape Dombey (Park 18: SZ-3)	
139° 44.308' E	37° 9.010' S
139° 44.504' E	37° 9.122' S
139° 44.760' E	37° 9.321' S
139° 44.618' E	37° 9.605' S
139° 44.476' E	37° 9.605' S

Lower South East Marine Park	
Longitude Degrees Decimal Minutes	Latitude Degrees Decimal Minutes
Canunda (Park 19: SZ-1)	
140° 9.164' E	37° 36.073' S
140° 11.242' E	37° 37.522' S
140° 8.648' E	37° 39.781' S
140° 6.319' E	37° 38.648' S
Piccaninnie Ponds (Park 19: SZ-2)	
140° 54.713' E	38° 3.043' S
140° 57.949' E	38° 3.385' S
140° 57.949' E	38° 4.381' S
140° 54.713' E	38° 4.381' S





Fleurieu Peninsula

Sanctuary Zones (SZ)

Encounter Marine Park

Longitude Degrees Decimal Minutes	Latitude Degrees Decimal Minutes
---	--

Port Noarlunga Reef (Park 15: SZ-2)

138° 26.653' E	35° 8.647' S
138° 27.974' E	35° 8.647' S
138° 28.011' E	35° 8.885' S
138° 27.864' E	35° 8.902' S
138° 27.875' E	35° 9.010' S
138° 28.097' E	35° 8.984' S
138° 28.227' E	35° 9.877' S
138° 28.224' E	35° 9.898' S
138° 27.950' E	35° 10.029' S
138° 26.046' E	35° 10.029' S
138° 26.046' E	35° 9.026' S
138° 26.653' E	35° 9.026' S

Onkaparinga River (Park 15: SZ-1)

138° 28.664' E	35° 9.302' S
138° 28.730' E	35° 9.355' S
138° 28.607' E	35° 9.394' S
138° 28.624' E	35° 9.335' S

Aldinga Reef (Park 15: SZ-3)

138° 22.260' E	35° 15.213' S
138° 26.082' E	35° 15.213' S
138° 27.287' E	35° 15.933' S
138° 26.558' E	35° 17.012' S
138° 22.260' E	35° 17.012' S

Carrickalinga Cliffs (Park 15: SZ-4)

138° 19.035' E	35° 22.695' S
138° 21.749' E	35° 22.695' S
138° 19.700' E	35° 24.605' S
138° 19.035' E	35° 24.605' S

Rapid Head (Park 15: SZ-5)

138° 9.360' E	35° 27.719' S
138° 11.089' E	35° 27.719' S
138° 11.089' E	35° 30.654' S
138° 10.445' E	35° 30.654' S
138° 10.445' E	35° 31.181' S
138° 8.713' E	35° 32.436' S
138° 5.742' E	35° 32.436' S
138° 5.742' E	35° 30.402' S

Sponge Gardens (Park 15: SZ-10)

138° 0.387' E	35° 43.221' S
138° 10.292' E	35° 43.221' S
138° 10.292' E	35° 45.911' S
138° 4.094' E	35° 45.911' S
138° 0.387' E	35° 43.589' S

The Pages (Park 15: SZ-11)

138° 15.657' E	35° 43.325' S
138° 20.524' E	35° 43.325' S
138° 20.524' E	35° 46.425' S
138° 15.657' E	35° 46.425' S

Encounter Bay (Park 15: SZ-6)

138° 42.754' E	35° 30.802' S
138° 42.754' E	35° 35.636' S
138° 39.109' E	35° 35.636' S
138° 41.390' E	35° 31.987' S

Coorong Beach North (Park 15: SZ-7)

138° 56.390' E	35° 35.237' S
138° 58.614' E	35° 36.365' S
138° 58.614' E	35° 39.950' S
138° 56.390' E	35° 38.719' S

RAZ 2

Restricted Access Zone 2 overlays the North Pages Island Prohibited Area.

N/A	N/A
-----	-----

RAZ 3

Restricted Access Zone 3 overlays the South Pages Island and reef, Prohibited Area.

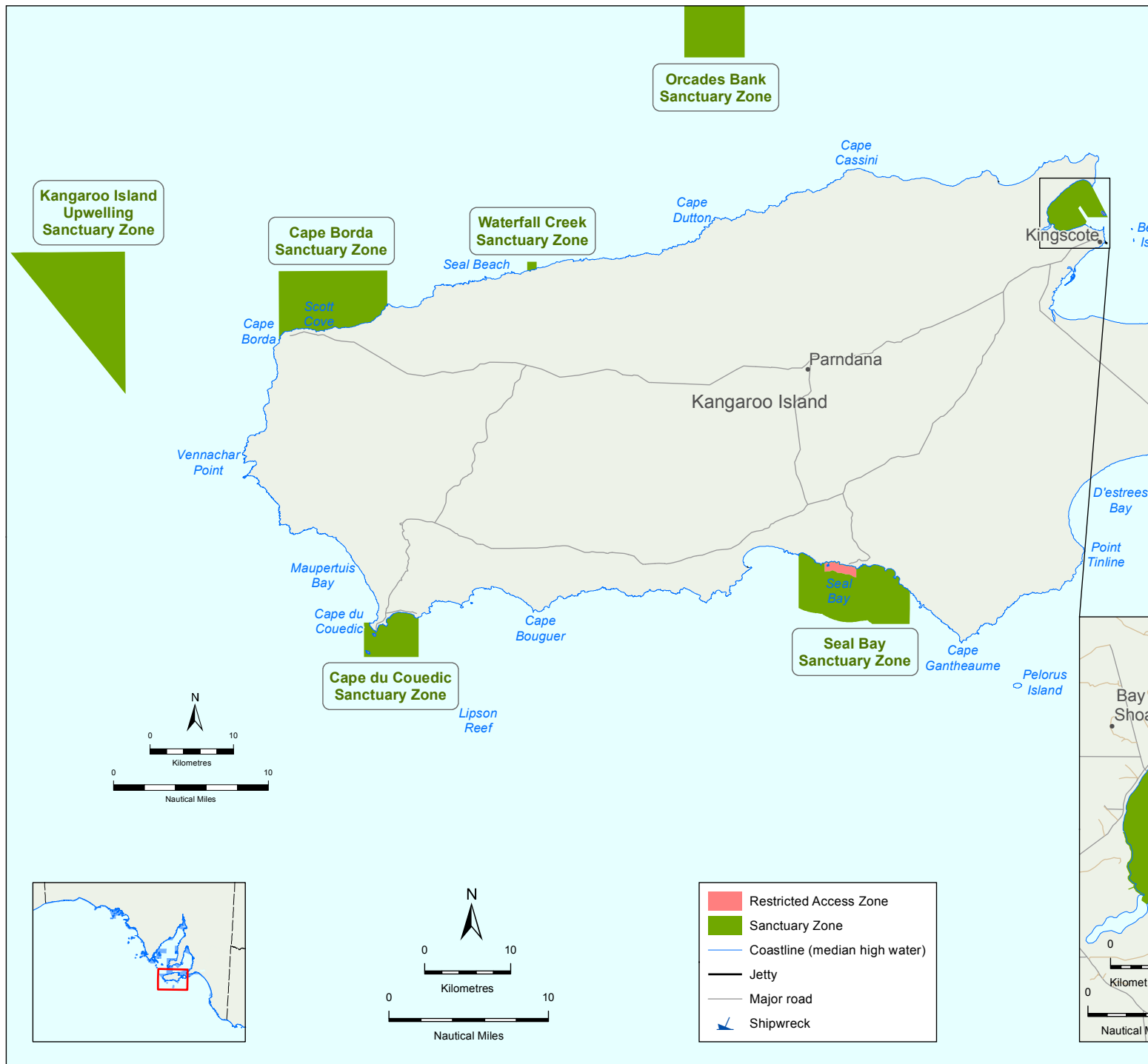
N/A	N/A
-----	-----

RAZ 4

Restricted Access Zone 4 overlays the Prohibited Area within the West Island Aquatic Reserve.

138° 35.553' E	35° 36.292' S
138° 35.553' E	35° 36.346' S
138° 35.352' E	35° 36.465' S
138° 35.284' E	35° 36.465' S

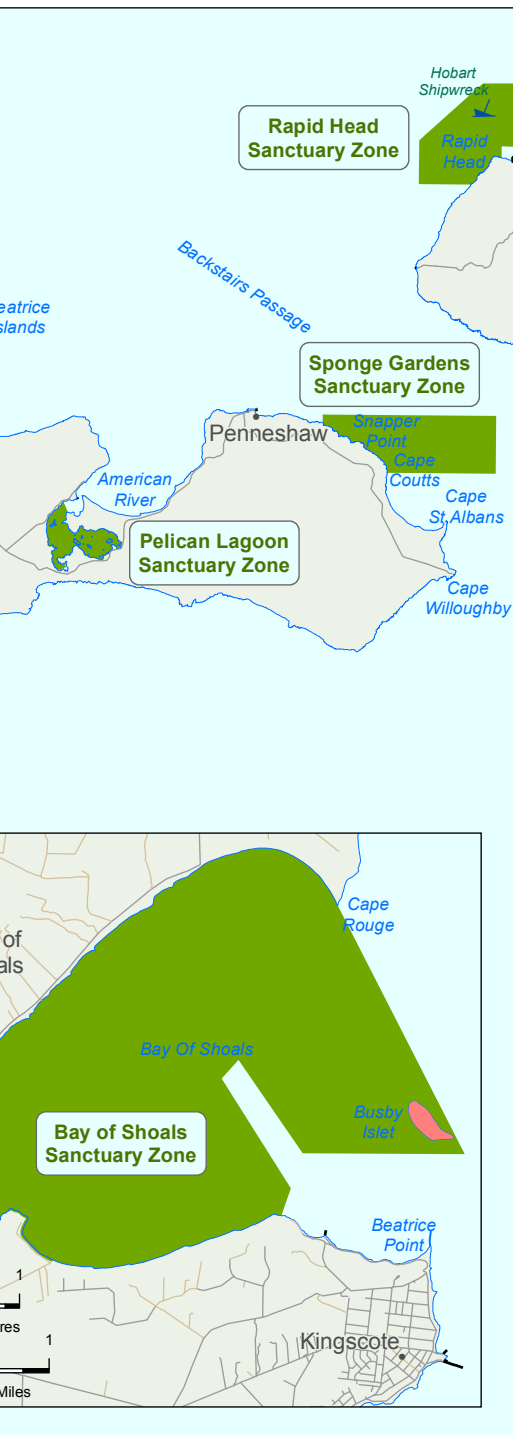




Sanctuary Zones (SZ)

Western Kangaroo Island Marine Park					
Longitude Degrees	Latitude Degrees	Cape du Couedic (Park 16: SZ-3)		RAZ 1	
Decimal Minutes	Decimal Minutes	Sanctuary Zone 3 partially follows Remarkable Rocks Prohibited Area boundary from low water mark.		Restricted Access Zone 1 is Paisley Island Prohibited Area.	
		136° 45.276' E	36° 2.910' S	N/A	N/A
		136° 45.270' E	36° 2.919' S	RAZ 2	
		136° 45.575' E	36° 2.930' S	Restricted Access Zone 2 is Flinders Chase Prohibited Area.	
		136° 45.575' E	36° 5.415' S	N/A	N/A
		136° 41.348' E	36° 5.415' S	RAZ 3	
		136° 41.348' E	36° 3.244' S	Restricted Access Zone 3 is Remarkable Rocks Prohibited Area from median high water to low water mark.	
		136° 41.782' E	36° 3.244' S	136° 45.276' E	36° 2.910' S
				136° 45.572' E	36° 2.918' S
				136° 45.575' E	36° 2.930' S
				136° 45.270' E	36° 2.919' S
Cape Borda (Park 16: SZ-1)					
136° 34.855' E	35° 41.107' S				
136° 43.242' E	35° 41.107' S				
136° 43.242' E	35° 43.213' S				
136° 34.855' E	35° 45.407' S				
Kangaroo Island Upwelling (Park 16: SZ-2)					
136° 14.206' E	35° 39.836' S				
136° 23.000' E	35° 39.836' S				
136° 23.000' E	35° 48.795' S				

Kangaroo Island



Encounter Marine Park

Longitude Degrees Decimal Minutes	Latitude Degrees Decimal Minutes
Bay of Shoals (Park 15: SZ-8)	
137° 37.588' E	35° 35.795' S
137° 38.799' E	35° 37.700' S
137° 37.270' E	35° 37.700' S
137° 36.663' E	35° 36.986' S
137° 36.503' E	35° 37.130' S
137° 37.160' E	35° 37.970' S
137° 37.073' E	35° 38.183' S
Pelican Lagoon (Park 15: SZ-9)	
137° 45.586' E	35° 47.364' S
137° 45.841' E	35° 47.863' S
Sponge Gardens (Park 15: SZ-10)	
138° 0.387' E	35° 43.221' S
138° 10.292' E	35° 43.221' S
138° 10.292' E	35° 45.911' S
138° 4.094' E	35° 45.911' S
138° 0.387' E	35° 43.589' S
RAZ 1	
Restricted Access Zone 1 is Busby Islet Conservation Park.	
N/A	N/A

Rapid Head Sanctuary Zone coordinates are on page 9.

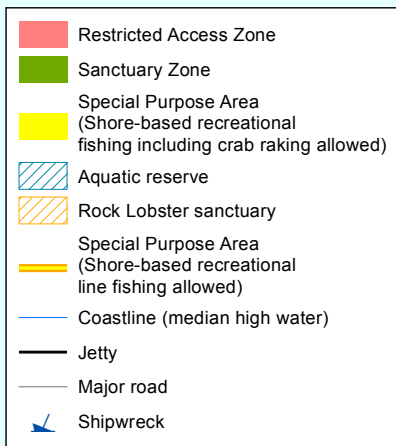
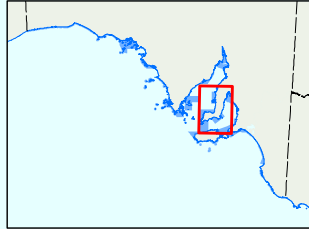
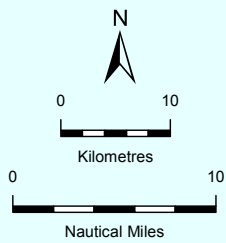
Southern Spencer Gulf Marine Park

Longitude Degrees Decimal Minutes	Latitude Degrees Decimal Minutes
Waterfall Creek (Park 12: SZ-3)	
136° 54.025' E	35° 40.567' S
136° 54.763' E	35° 40.567' S
136° 54.763' E	35° 40.966' S
136° 54.025' E	35° 41.142' S

Southern Kangaroo Island Marine Park

Longitude Degrees Decimal Minutes	Latitude Degrees Decimal Minutes
Seal Bay (Park 17: SZ-1)	
137° 15.014' E	35° 59.066' S
137° 23.619' E	36° 1.265' S
137° 23.619' E	36° 3.337' S
137° 20.713' E	36° 3.337' S
137° 15.014' E	36° 2.358' S
RAZ 1	
Restricted Access Zone 1 is Seal Bay Aquatic Reserve, excluding beach.	
137° 17.017' E	35° 59.539' S
137° 19.483' E	35° 59.897' S
137° 19.483' E	36° 0.417' S
137° 17.017' E	36° 0.072' S





Cape Elizabeth Sanctuary Zone
Shore-based line fishing is allowed from the beach.
The zone extends 4.5 km along the coast, from a point 4 km north of The Gap Camping Site.

Goose Island Sanctuary Zone
extends out approximately 150 m from the coasts of Goose Island, Little Goose Island and White Rock.

Port Victoria Sanctuary Zone

Clinton Wetlands Sanctuary Zone
contains an area where shore-fishing, including crabbing, is allowed in a 500 m radius from Port Arthur
138° 3.893' E, 34° 8.995' S

Middle Spit Sanctuary Zone

Offshore Ardrossan Sanctuary Zone
contains the historic Zaroni Shipwreck.
The wreck is protected by a prohibited area of a 550 m radius from
138° 3.807' E, 34° 30.730' S

Point Davenport Sanctuary Zone
extends out from the conservation park shoreline.

Salt Swamp Creek Sanctuary Zone

Chinamans Hat Sanctuary Zone
Shore-based line fishing is allowed from Chinamans Hat beach.

Orcades Bank Sanctuary Zone

Rapid Head Sanctuary Zone
contains the Hobart Shipwreck.
The wreck is protected by a prohibited area of a 550 m radius from
138° 9.433' E, 35° 28.860' S

Waterfall Creek Sanctuary Zone

Bay of Shoals Sanctuary Zone

Yorke Peninsula

Sanctuary Zones (SZ)

Eastern Spencer Gulf Marine Park

Longitude Degrees Decimal Minutes	Latitude Degrees Decimal Minutes
---	--

Cape Elizabeth (Park 11: SZ-1)

137° 22.995' E	34° 9.994' S
137° 27.753' E	34° 9.994' S
137° 29.290' E	34° 12.078' S
137° 22.995' E	34° 12.078' S

Port Victoria (Park 11: SZ-2)

137° 26.517' E	34° 26.942' S
137° 29.142' E	34° 26.942' S

Goose Island (Park 11: SZ-3)

Sanctuary Zone 3 is Goose Island Aquatic Reserve.

N/A	N/A
-----	-----

Southern Spencer Gulf Marine Park

Longitude Degrees Decimal Minutes	Latitude Degrees Decimal Minutes
---	--

Chinamans Hat (Park 12: SZ-1)

136° 56.591' E	35° 16.943' S
136° 59.598' E	35° 16.943' S
136° 59.598' E	35° 23.035' S
136° 54.781' E	35° 23.035' S
136° 54.781' E	35° 17.241' S

Orcades Bank (Park 12: SZ-2)

137° 6.155' E	35° 22.844' S
137° 10.782' E	35° 22.844' S
137° 10.782' E	35° 27.715' S
137° 6.155' E	35° 27.715' S

Althorpe Island (RAZ-1)

Restricted Access Zone 1 is Althorpe Islands Prohibited Area.

Lower Yorke Peninsula Marine Park

Longitude Degrees Decimal Minutes	Latitude Degrees Decimal Minutes
---	--

Point Davenport (Park 13: SZ-1)

137° 20.453' E	35° 8.937' S
137° 27.816' E	35° 8.937' S
137° 27.816' E	35° 12.065' S
137° 19.231' E	35° 12.065' S
137° 19.231' E	35° 9.968' S

Salt Swamp Creek (Park 13: SZ-2)

137° 43.647' E	35° 3.157' S
137° 43.673' E	35° 3.254' S

Upper Gulf St. Vincent Marine Park

Longitude Degrees Decimal Minutes	Latitude Degrees Decimal Minutes
---	--

Clinton Wetlands (Park 14: SZ-1)

138° 8.002' E	34° 10.270' S
138° 8.002' E	34° 12.304' S
138° 1.669' E	34° 12.304' S

Middle Spit (Park 14: SZ-2)

138° 8.503' E	34° 20.139' S
138° 10.509' E	34° 20.139' S
138° 10.354' E	34° 24.702' S
138° 8.503' E	34° 23.916' S

Offshore Ardrossan (Park 14: SZ-3)

138° 1.547' E	34° 28.242' S
138° 6.011' E	34° 28.242' S
138° 6.011' E	34° 31.152' S
138° 1.547' E	34° 31.152' S

Light River Delta (Park 14: SZ-4)

Sanctuary Zone 4 extends to the seaward Mangrove Habitat extent which is approximately low water mark. In Sanctuary Zone 4 the Light River mouth is buffered by 750 metres.

138° 20.652' E	34° 32.320' S
138° 20.937' E	34° 32.320' S
138° 24.190' E	34° 35.794' S
138° 23.267' E	34° 35.794' S
138° 21.883' E	34° 35.041' S
138° 21.338' E	34° 34.379' S
138° 20.965' E	34° 33.378' S

Light River Mouth centre point

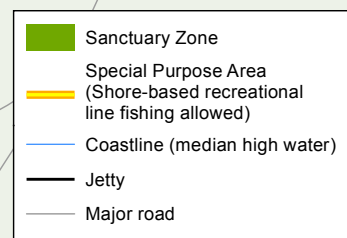
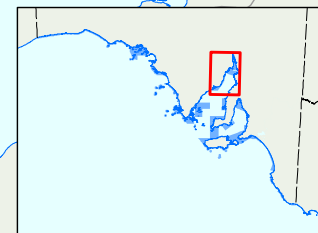
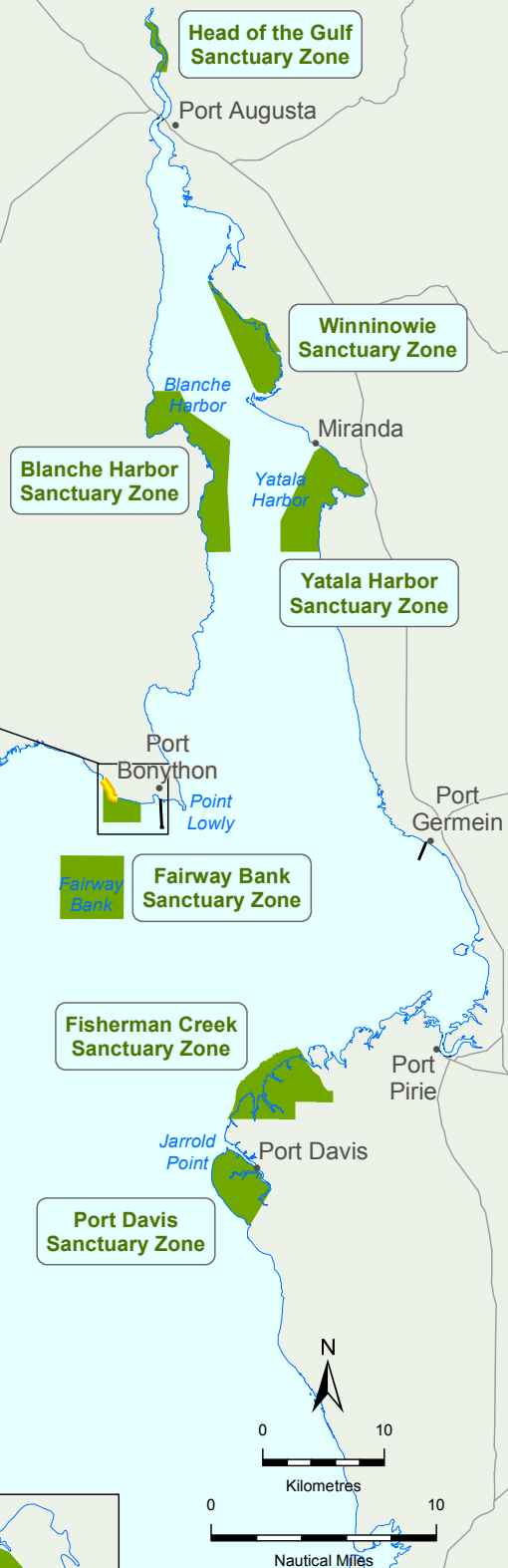
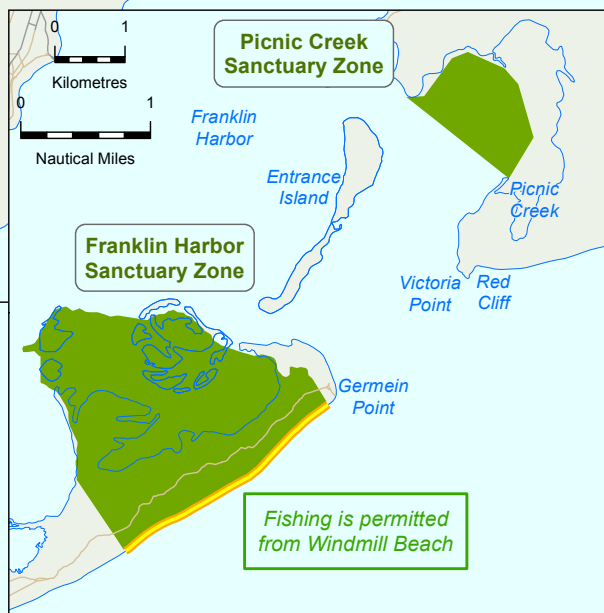
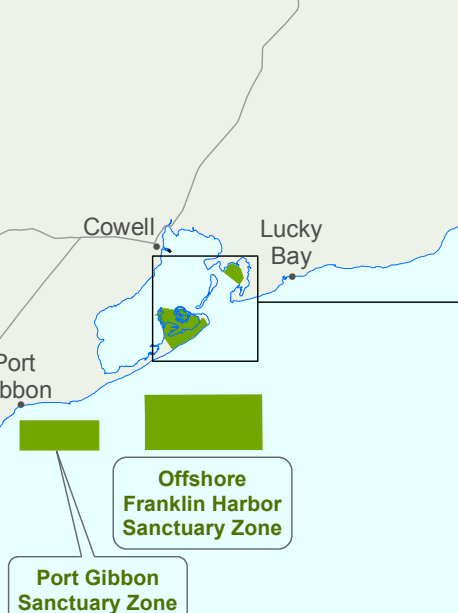
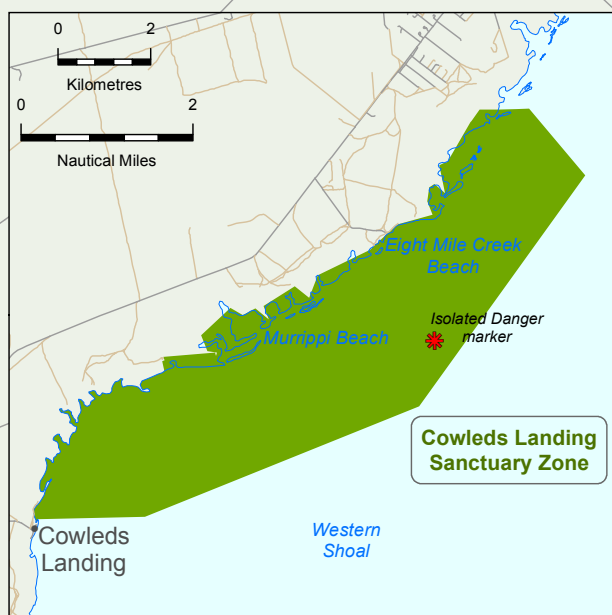
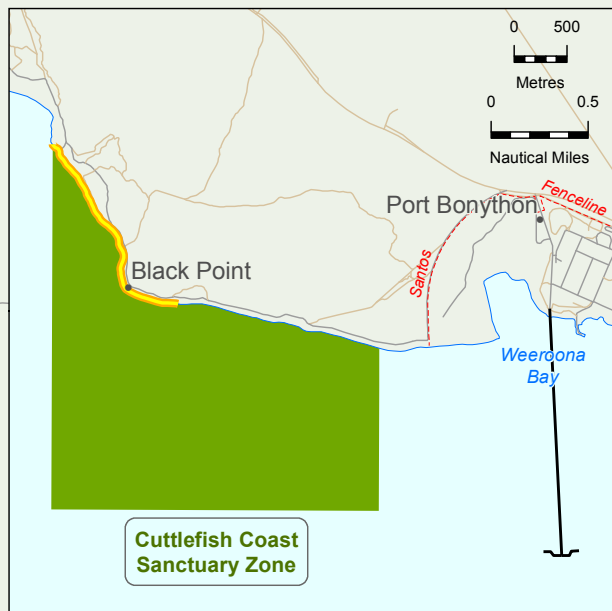
138° 21.570' E	34° 34.729' S
----------------	---------------

RAZ-1

Restricted Access Zone 1 is Defence Prohibited Area.

138° 10.642' E	34° 16.177' S
138° 15.053' E	34° 25.021' S
138° 13.670' E	34° 26.390' S
138° 12.802' E	34° 26.451' S
138° 10.354' E	34° 24.702' S

Please note: The coordinates for Waterfall Creek, Bay of Shoals & Rapid Head Sanctuary Zones are listed on pages 9 & 11.



Upper Spencer Gulf

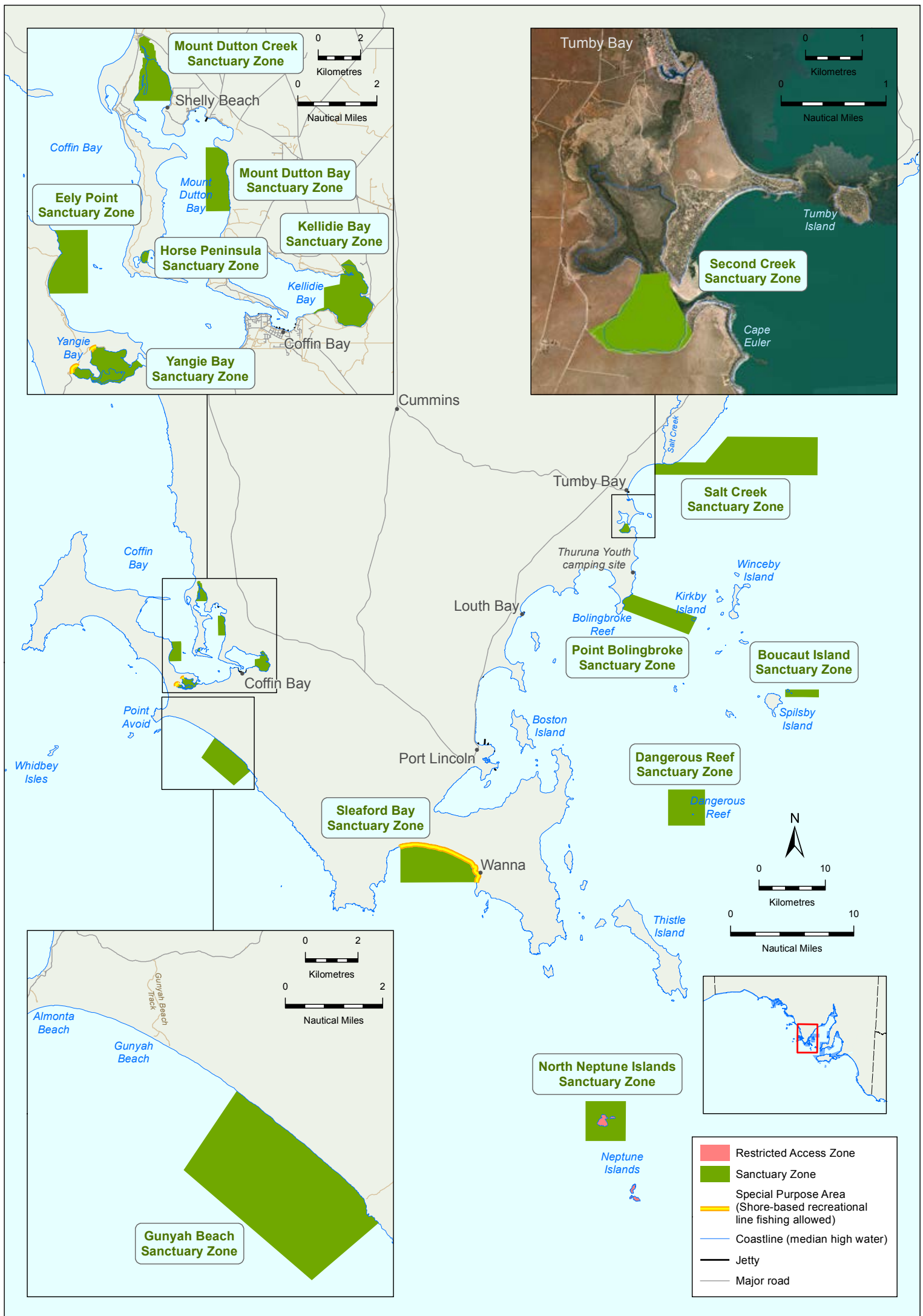
Sanctuary Zones (SZ)

Upper Spencer Gulf Marine Park	
Longitude Degrees Decimal Minutes	Latitude Degrees Decimal Minutes
Head of the Gulf (Park 10: SZ-1)	
137° 45.426' E	32° 27.143' S
137° 45.989' E	32° 27.143' S
Winninowie (Park 10: SZ-2)	
The southern boundary of Sanctuary Zone 2 follows the northern boundary of Chinaman Creek to the coastline at approximately medium high water.	
137° 48.182' E	32° 36.443' S
137° 48.389' E	32° 36.443' S
137° 51.517' E	32° 41.428' S
137° 50.670' E	32° 41.163' S
Blanche Harbor (Park 10: SZ-3)	
137° 45.347' E	32° 41.361' S
137° 46.771' E	32° 41.336' S
137° 47.280' E	32° 42.275' S
137° 49.427' E	32° 43.531' S
137° 49.309' E	32° 45.738' S
137° 49.500' E	32° 48.506' S
137° 48.223' E	32° 48.524' S
Yatala Harbor (Park 10: SZ-4)	
137° 54.257' E	32° 43.785' S
137° 54.192' E	32° 48.484' S
137° 52.116' E	32° 48.484' S
137° 52.116' E	32° 47.107' S
137° 53.881' E	32° 44.030' S
Cuttlefish Coast (Park 10: SZ-5)	
137° 42.792' E	32° 58.693' S
137° 44.799' E	32° 59.739' S
137° 44.799' E	33° 0.578' S
137° 42.792' E	33° 0.578' S

Fairway Bank (Park 10: SZ-6)	
137° 40.555' E	33° 2.068' S
137° 43.922' E	33° 2.068' S
137° 43.922' E	33° 4.904' S
137° 40.555' E	33° 4.904' S
Cowleds Landing (Park 10: SZ-7)	
137° 32.717' E	33° 4.443' S
137° 33.403' E	33° 4.434' S
137° 34.181' E	33° 5.212' S
137° 31.881' E	33° 7.912' S
137° 28.081' E	33° 9.213' S
137° 26.586' E	33° 9.244' S
Fisherman Creek (Park 10: SZ-8)	
Sanctuary Zone 8 extends to the seaward Mangrove Habitat extent which is approximately low water mark.	
137° 53.118' E	33° 10.562' S
137° 53.585' E	33° 11.096' S
137° 55.073' E	33° 12.484' S
137° 49.695' E	33° 13.787' S
137° 49.472' E	33° 13.787' S
137° 50.315' E	33° 12.057' S
137° 51.159' E	33° 11.411' S
Port Davis (Park 10: SZ-9)	
137° 48.937' E	33° 15.467' S
137° 50.967' E	33° 15.975' S
137° 51.213' E	33° 16.186' S
137° 51.770' E	33° 16.981' S
137° 50.694' E	33° 18.529' S

Franklin Harbor Marine Park	
Longitude Degrees Decimal Minutes	Latitude Degrees Decimal Minutes
Picnic Creek (Park 9: SZ-1)	
136° 58.856' E	33° 42.161' S
136° 59.794' E	33° 42.786' S
Franklin Harbor (Park 9: SZ-2)	
Sanctuary Zone 2 boundary partially follows the Franklin Harbor Conservation Park boundary.	
136° 56.212' E	33° 43.851' S
136° 56.460' E	33° 43.874' S
136° 57.132' E	33° 44.080' S
136° 57.436' E	33° 44.163' S
136° 58.105' E	33° 44.514' S
136° 58.106' E	33° 44.530' S
136° 56.224' E	33° 45.655' S
136° 55.790' E	33° 45.118' S
136° 55.458' E	33° 44.359' S
136° 55.458' E	33° 44.159' S
Port Gibbon (Park 9: SZ-3)	
136° 48.086' E	33° 48.768' S
136° 52.323' E	33° 48.768' S
136° 52.323' E	33° 50.107' S
136° 48.086' E	33° 50.107' S
Offshore Franklin Harbor (Park 9: SZ-4)	
136° 54.742' E	33° 47.640' S
137° 0.999' E	33° 47.640' S
137° 0.999' E	33° 50.107' S
136° 54.742' E	33° 50.107' S





Lower Eyre Peninsula

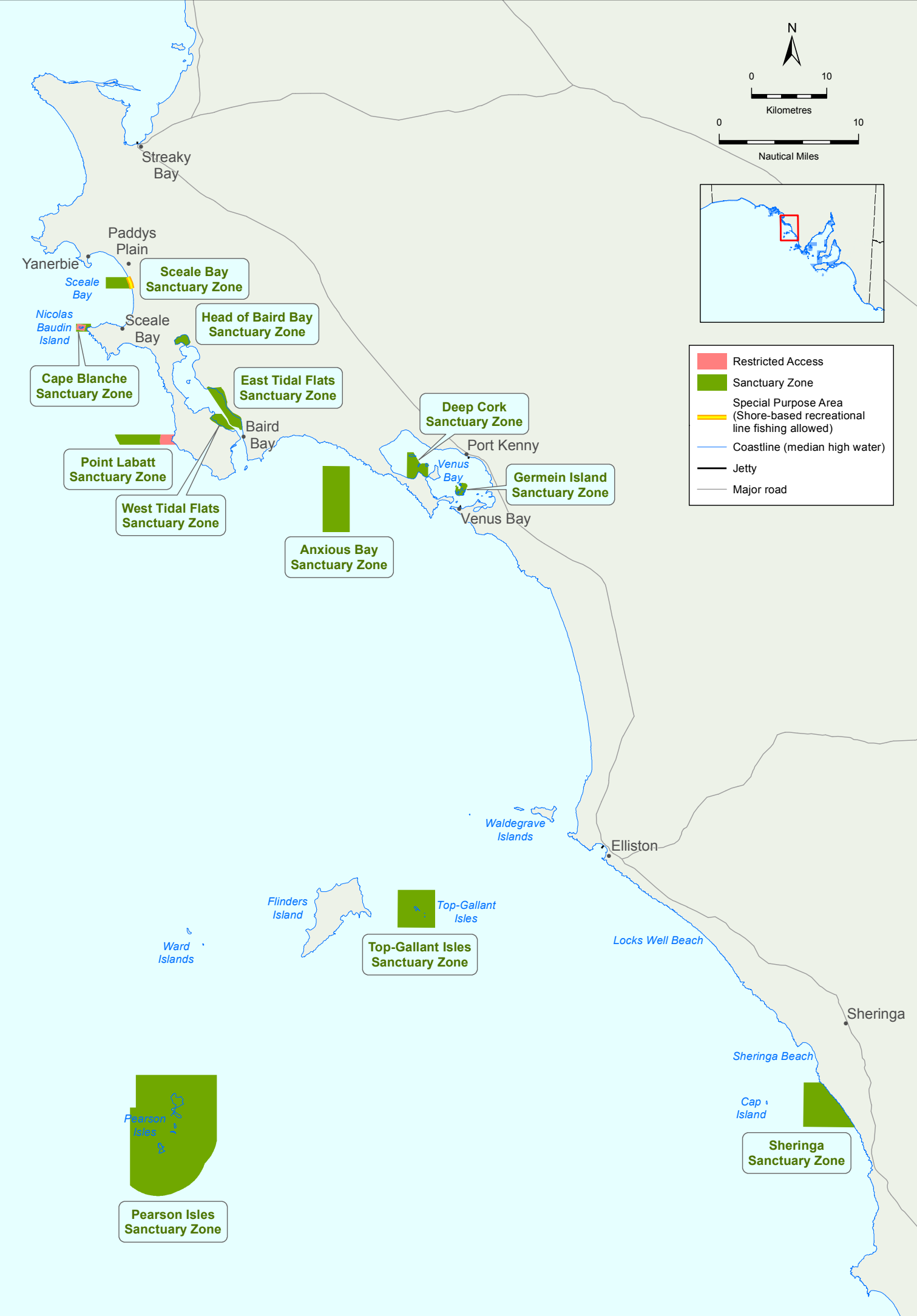
Sanctuary Zones (SZ)

Thorny Passage Marine Park	
Longitude Degrees Decimal Minutes	Latitude Degrees Decimal Minutes
Eely Point (Park 5: SZ-1)	
135° 21.197' E	34° 34.757' S
135° 22.260' E	34° 34.757' S
135° 22.260' E	34° 36.368' S
135° 21.069' E	34° 36.368' S
Yangie Bay (Park 5: SZ-2)	
135° 23.733' E	34° 38.060' S
135° 23.927' E	34° 38.205' S
Kellidie Bay (Park 5: SZ-3)	
135° 30.031' E	34° 35.905' S
135° 29.147' E	34° 36.913' S
135° 29.323' E	34° 36.810' S
135° 29.519' E	34° 36.757' S
135° 29.519' E	34° 36.245' S
135° 30.001' E	34° 36.170' S
Mount Dutton Bay (Park 5: SZ-4)	
135° 25.901' E	34° 32.669' S
135° 26.292' E	34° 32.669' S
135° 26.634' E	34° 34.293' S
135° 25.901' E	34° 34.293' S
Mount Dutton Creek (Park 5: SZ-5)	
135° 23.669' E	34° 31.480' S
135° 24.820' E	34° 31.480' S
Horse Peninsula (Park 5: SZ-6)	
135° 24.156' E	34° 35.273' S
135° 24.080' E	34° 35.611' S
Gunyah Beach (Park 5: SZ-7)	
135° 25.532' E	34° 42.615' S
135° 29.051' E	34° 45.344' S
135° 27.383' E	34° 46.516' S
135° 24.197' E	34° 44.237' S
Sleaford Bay (Park 5: SZ-8)	
135° 43.827' E	34° 51.545' S
135° 51.376' E	34° 54.459' S
135° 43.827' E	34° 54.459' S

Sir Joseph Banks Group Marine Park	
Longitude Degrees Decimal Minutes	Latitude Degrees Decimal Minutes
Salt Creek (Park 6: SZ-1)	
136° 16.044' E	34° 18.126' S
136° 24.906' E	34° 18.126' S
136° 24.906' E	34° 21.250' S
136° 8.878' E	34° 21.250' S
136° 8.878' E	34° 20.365' S
136° 10.959' E	34° 20.224' S
136° 13.863' E	34° 20.224' S
Second Creek (Park 6: SZ-2)	
136° 5.924' E	34° 25.233' S
136° 6.277' E	34° 25.215' S
136° 6.292' E	34° 25.362' S
136° 6.550' E	34° 25.777' S
Point Bolingbroke (Park 6: SZ-3)	
136° 6.645' E	34° 30.986' S
136° 13.107' E	34° 32.852' S
136° 12.289' E	34° 34.268' S
136° 5.751' E	34° 32.210' S
Boucaut Island (Park 6: SZ-4)	
136° 21.798' E	34° 38.709' S
136° 25.140' E	34° 38.709' S
136° 25.140' E	34° 39.334' S
136° 21.798' E	34° 39.334' S
Dangerous Reef (Park 6: SZ-5)	
136° 10.283' E	34° 46.891' S
136° 13.926' E	34° 46.891' S
136° 13.926' E	34° 49.828' S
136° 10.283' E	34° 49.828' S
RAZ 1 Restricted Access Zone 1 is Dangerous Reef Prohibited Area.	
N/A	N/A

Neptune Islands Group (Ron and Valerie Taylor) Marine Park	
Longitude Degrees Decimal Minutes	Latitude Degrees Decimal Minutes
North Neptune Islands (Park 7: SZ-1)	
136° 2.162' E	35° 12.279' S
136° 6.147' E	35° 12.279' S
136° 6.147' E	35° 15.532' S
136° 2.162' E	35° 15.532' S
RAZ 1 Restricted Access Zone 1 is Neptune Islands Prohibited Area – North Neptune Islands.	
N/A	N/A
RAZ 2 Restricted Access Zone 2 is Neptune Islands Prohibited Area – South Neptune Islands.	
N/A	N/A





West Coast

Sanctuary Zones (SZ)

West Coast Bays Marine Park

Longitude Degrees Decimal Minutes	Latitude Degrees Decimal Minutes
---	--

Sceale Bay (Park 3: SZ-1)

134° 9.982' E	32° 57.321' S
134° 11.873' E	32° 57.321' S
134° 12.208' E	32° 58.137' S
134° 9.982' E	32° 58.137' S

Cape Blanche (Park 3: SZ-2)

134° 7.417' E	33° 0.675' S
134° 8.701' E	33° 0.675' S
134° 8.701' E	33° 0.877' S
134° 8.521' E	33° 1.257' S
134° 7.417' E	33° 1.257' S

Point Labatt (Park 3: SZ-3)

Sanctuary Zone 3 eastern boundary follows the seaward extent of Point Labatt Aquatic Reserve boundary.

134° 10.738' E	33° 8.680' S
134° 14.673' E	33° 8.680' S
134° 14.623' E	33° 9.406' S
134° 11.169' E	33° 9.406' S

West Tidal Flats (Park 3: SZ-4)

134° 19.297' E	33° 7.177' S
134° 19.888' E	33° 7.177' S
134° 20.314' E	33° 7.628' S
134° 20.498' E	33° 7.968' S
134° 21.075' E	33° 8.326' S
134° 20.368' E	33° 8.326' S

Head of Baird Bay (Park 3: SZ-5)

134° 16.692' E	33° 2.195' S
134° 16.868' E	33° 2.303' S

East Tidal Flats (Park 3: SZ-6)

134° 18.606' E	33° 5.303' S
134° 21.675' E	33° 8.348' S
134° 21.446' E	33° 8.348' S
134° 21.356' E	33° 8.194' S
134° 20.799' E	33° 8.076' S
134° 20.576' E	33° 7.908' S
134° 20.402' E	33° 7.539' S

Anxious Bay (Park 3: SZ-7)

134° 28.568' E	33° 10.945' S
134° 30.893' E	33° 10.945' S
134° 30.893' E	33° 15.701' S
134° 28.568' E	33° 15.701' S

Deep Cork (Park 3: SZ-8)

134° 35.799' E	33° 9.930' S
134° 36.349' E	33° 9.930' S
134° 36.976' E	33° 10.799' S
134° 37.078' E	33° 10.722' S
134° 37.615' E	33° 10.722' S
134° 37.615' E	33° 11.664' S
134° 35.799' E	33° 11.761' S

Germein Island (Park 3: SZ-9)

Sanctuary Zone 9 is Venus Bay Conservation Park – Germein Island.

N/A	N/A
-----	-----

RAZ 1

134° 7.518' E	33° 0.680' S
134° 8.261' E	33° 0.771' S
134° 8.114' E	33° 1.222' S
134° 7.431' E	33° 1.116' S

RAZ 2

Restricted Access Zone 2 boundary follows the seaward extent of Point Labatt Aquatic Reserve boundary.

134° 14.673' E	33° 8.680' S
134° 15.851' E	33° 8.680' S
134° 15.988' E	33° 9.406' S
134° 14.623' E	33° 9.406' S

Investigator Marine Park

Longitude Degrees Decimal Minutes	Latitude Degrees Decimal Minutes
---	--

Top-Gallant Isles (Park 4: SZ-1)

134° 35.125' E	33° 41.513' S
134° 38.357' E	33° 41.513' S
134° 38.357' E	33° 44.233' S
134° 35.125' E	33° 44.233' S

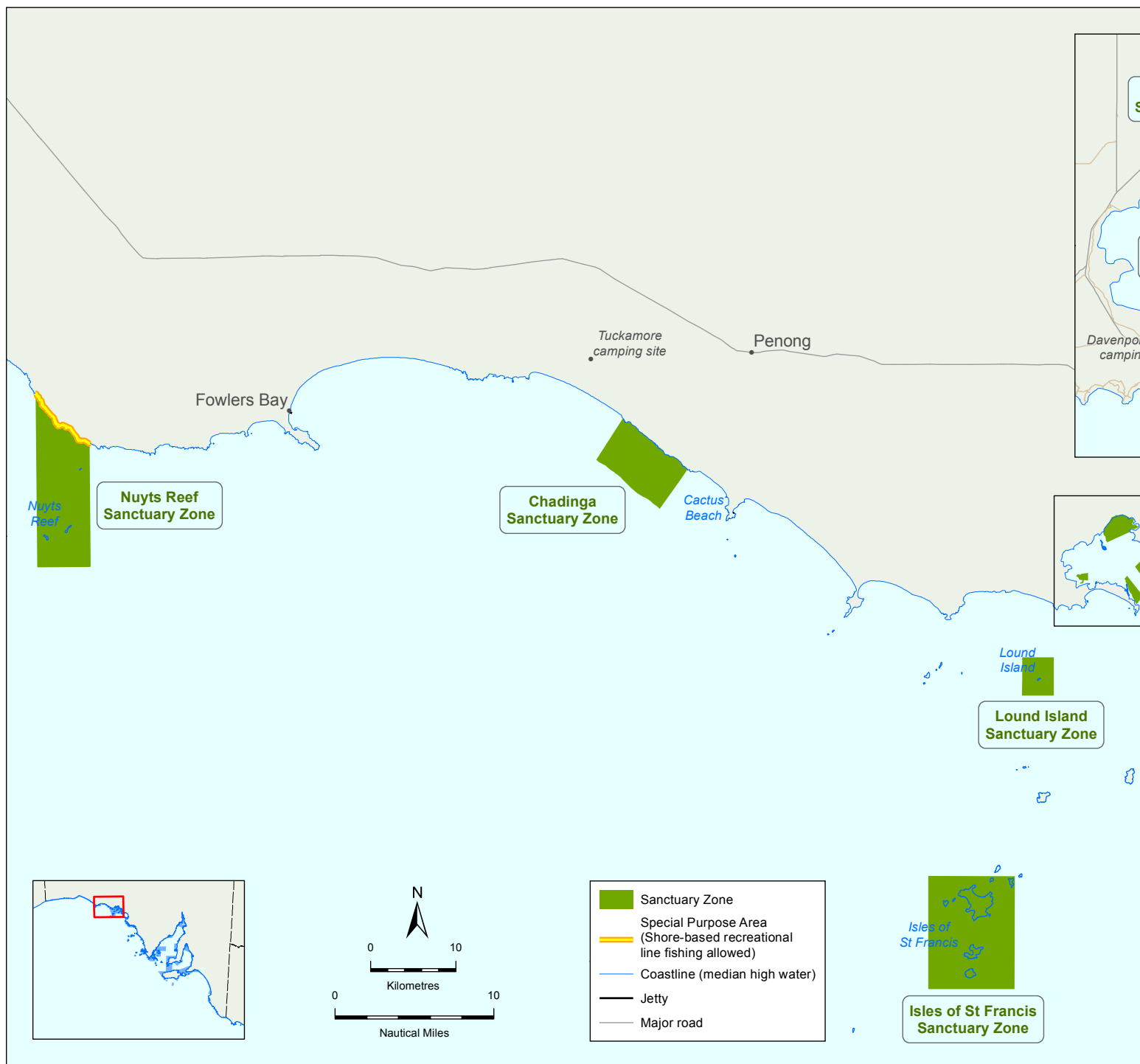
Pearson Isles (Park 4: SZ-2)

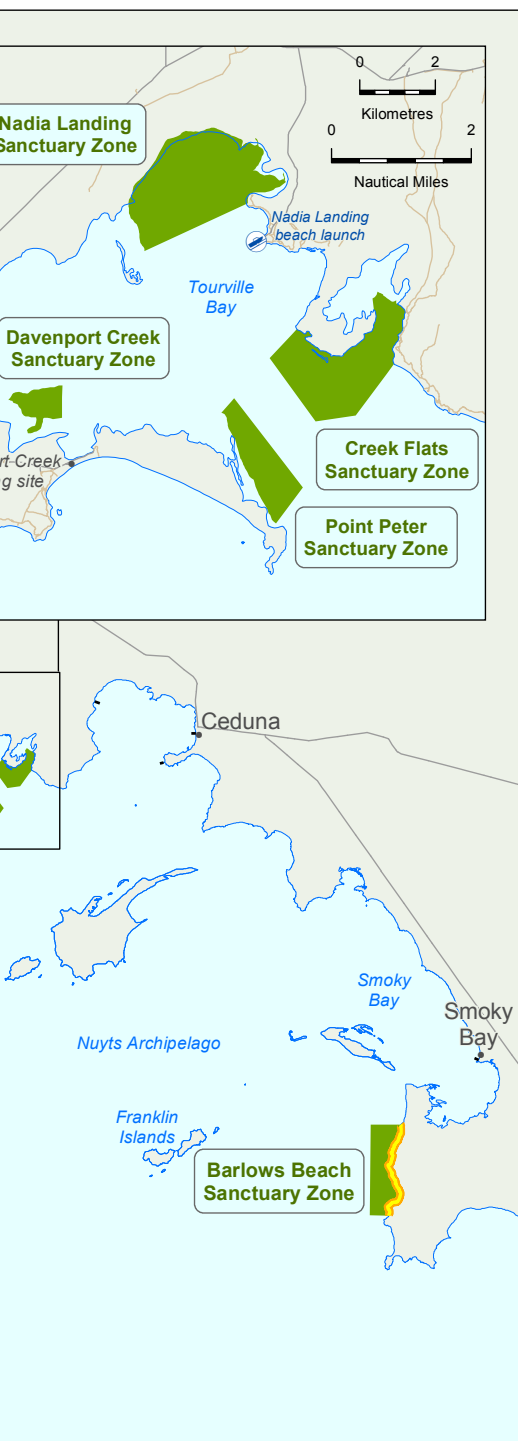
134° 12.518' E	33° 54.877' S
134° 19.536' E	33° 54.877' S
134° 19.536' E	33° 59.601' S
134° 12.000' E	34° 2.840' S
134° 12.000' E	33° 57.241' S
134° 12.518' E	33° 57.241' S

Sheringa (Park 4: SZ-3)

135° 10.294' E	33° 55.226' S
135° 11.794' E	33° 55.226' S
135° 14.748' E	33° 58.431' S
135° 10.294' E	33° 58.431' S







Far West Coast

Sanctuary Zones (SZ)

Nuyts Archipelago Marine Park

Longitude Degrees Decimal Minutes	Latitude Degrees Decimal Minutes
---	--

Nuyts Reef (Park 2 SZ-1)

132° 7.435' E	31° 58.062' S
132° 11.419' E	32° 1.246' S
132° 11.419' E	32° 9.084' S
132° 7.435' E	32° 9.084' S

Chadanga (Park 2 SZ-2)

132° 51.085' E	31° 59.867' S
132° 55.890' E	32° 3.103' S
132° 53.818' E	32° 5.597' S
132° 49.090' E	32° 2.497' S

Nadia Landing (Park 2 SZ-3)

133° 27.103' E	32° 7.710' S
133° 28.843' E	32° 7.022' S

Davenport Creek (Park 2 SZ-4)

133° 25.721' E	32° 9.642' S
133° 25.721' E	32° 10.107' S

Creek Flats (Park 2 SZ-5)

133° 29.685' E	32° 8.824' S
133° 31.327' E	32° 9.318' S
133° 30.680' E	32° 10.060' S
133° 30.000' E	32° 10.150' S
133° 29.220' E	32° 9.245' S

Point Peter (Park 2 SZ-6)

133° 28.408' E	32° 10.031' S
133° 28.625' E	32° 9.820' S
133° 29.790' E	32° 11.100' S
133° 29.340' E	32° 11.617' S

Lound Island (Park 2 SZ-7)

133° 20.815' E	32° 15.000' S
133° 23.175' E	32° 15.000' S
133° 23.175' E	32° 17.427' S
133° 20.815' E	32° 17.427' S

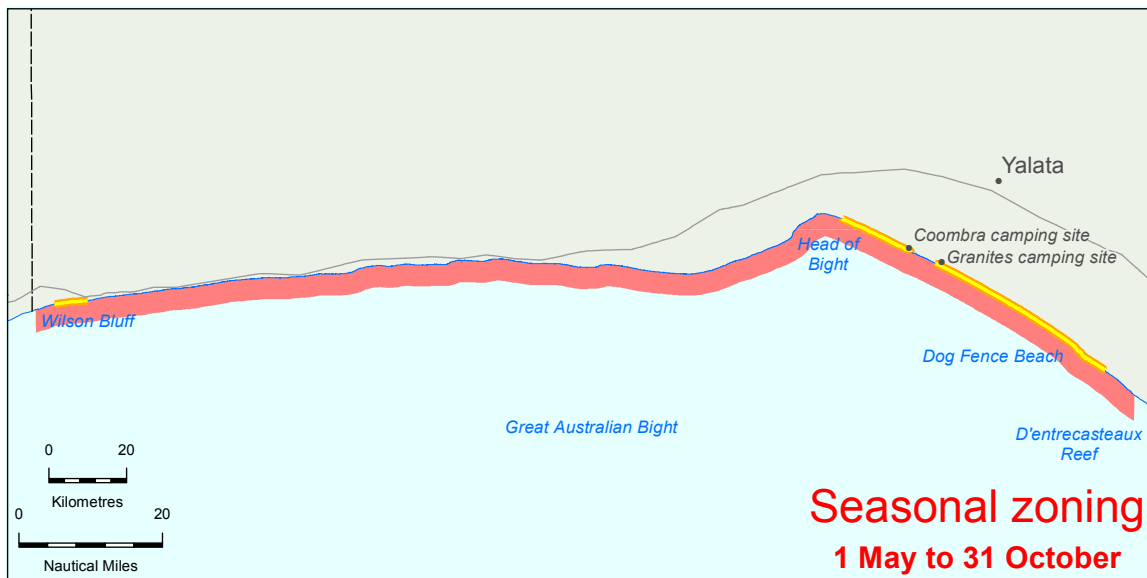
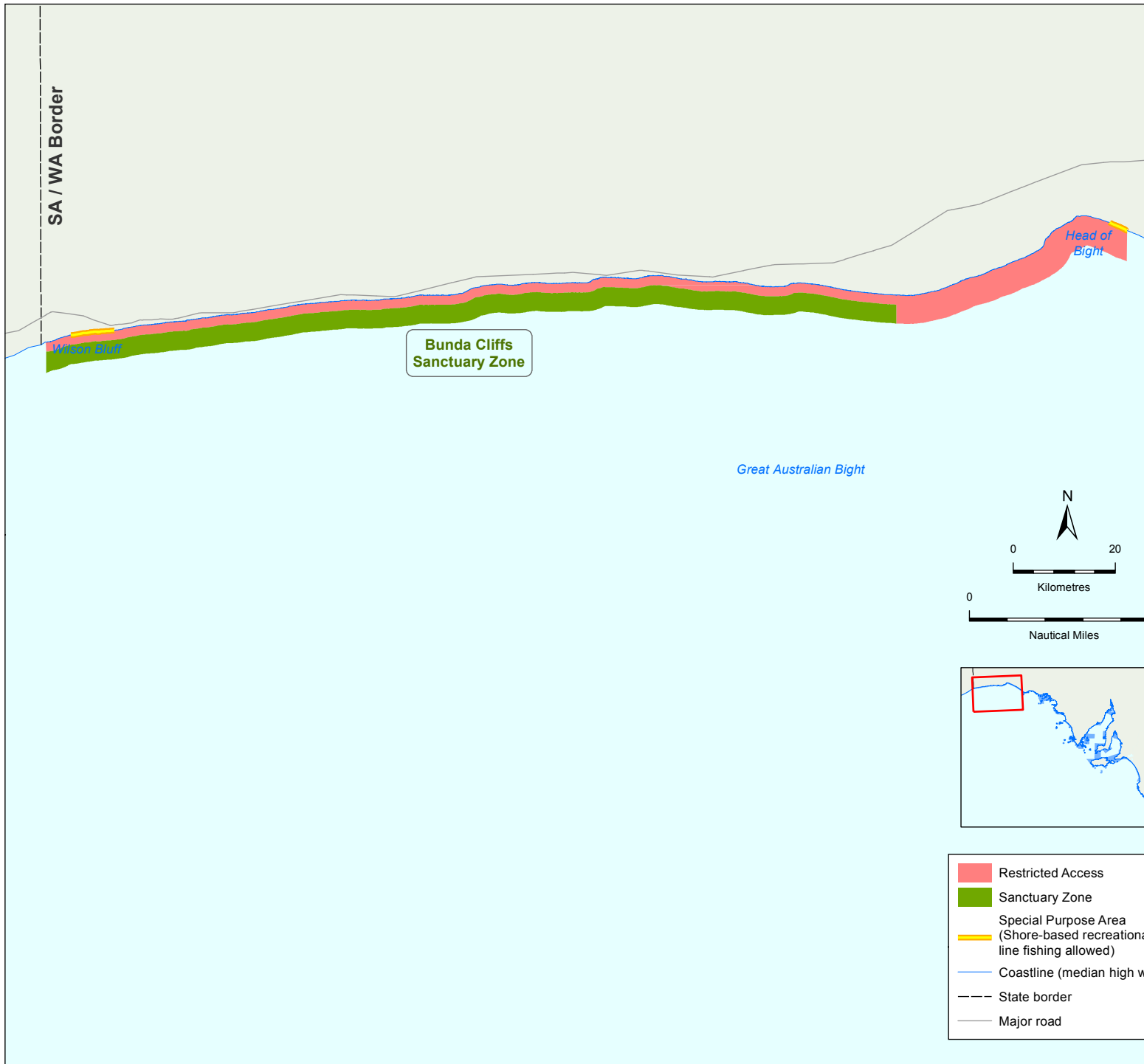
Isles of St Francis (Park 2 SZ-8)

133° 13.842' E	32° 28.876' S
133° 20.306' E	32° 28.876' S
133° 20.306' E	32° 36.037' S
133° 13.842' E	32° 36.037' S

Barlows Beach (Park 2 SZ-9)

133° 50.064' E	32° 25.786' S
133° 51.758' E	32° 25.786' S
133° 51.781' E	32° 26.146' S
133° 51.762' E	32° 26.146' S
133° 51.109' E	32° 30.033' S
133° 50.064' E	32° 30.033' S





Great Australian Bight

Sanctuary Zones (SZ)



Far West Coast Marine Park

Longitude Degrees Decimal Minutes	Latitude Degrees Decimal Minutes
---	--

Bunda Cliffs (Park 1: SZ-1)

Sanctuary Zone 1 is active from 1 November to 30 April inclusive.

129° 0.000' E	31° 42.230' S
130° 45.540' E	31° 37.431' S
130° 45.540' E	31° 39.423' S
129° 0.000' E	31° 44.496' S

Coastal Lagoons (Park 1: SZ-2)

Sanctuary Zone 2 is active from 1 November to 30 April inclusive.

131° 23.191' E	31° 33.122' S
131° 27.160' E	31° 34.637' S
131° 27.160' E	31° 37.997' S
131° 23.191' E	31° 36.402' S

Wahgunyah (Park 1: SZ-3)

Sanctuary Zone 3 is active from 1 November to 30 April inclusive.

131° 55.138' E	31° 49.196' S
132° 0.083' E	31° 52.646' S
132° 0.083' E	31° 56.268' S
131° 55.138' E	31° 52.989' S

RAZ 1

Restricted Access Zone 1 is active from 1 November to 30 April inclusive.

129° 0.000' E	31° 41.215' S
131° 14.040' E	31° 29.384' S
131° 14.040' E	31° 32.633' S
130° 45.540' E	31° 39.423' S
130° 45.540' E	31° 37.431' S
129° 0.000' E	31° 42.230' S

RAZ 2

Restricted Access Zone 2 is active from 1 May to 31 October inclusive.

129° 0.000' E	31° 41.215' S
132° 0.083' E	31° 52.646' S
132° 0.083' E	31° 56.268' S
129° 0.000' E	31° 44.496' S

For more information

www.marineparks.sa.gov.au

Your local Natural Resource Centres



Natural Resources South East

Mount Gambier | T: 8735 1177
11 Helen St

www.naturalresources.sa.gov.au/southeast



Natural Resources Eyre Peninsula

Port Lincoln | T: 8688 3111
86 Tasman Tce

www.naturalresources.sa.gov.au/eyrepeninsula



Natural Resources SA Arid Lands

Port Augusta | T: 8648 5300
Level 1, 9 Mackay Street

www.naturalresources.sa.gov.au/aridlands



Natural Resources Alinytjara Wilurara

Ceduna | T: 8625 3706
50B McKenzie St

www.naturalresources.sa.gov.au/alinytjara-wilurara



Natural Resources Northern and Yorke

Clare | T: 8841 3400
Unit 3/17 Lennon Street

www.naturalresources.sa.gov.au/northernandyorke



Natural Resources Adelaide and Mt Lofty Ranges

Eastwood | T: 8273 9100
205 Greenhill Rd

www.naturalresources.sa.gov.au/adelaidentloftyranges



Natural Resources Kangaroo Island

Kingscote | T: 8553 4444
37 Dauncey St

www.naturalresources.sa.gov.au/kangarooisland



Natural Resources SA Murray-Darling Basin

Murray Bridge | T: 8532 9100
110A Mannum Rd

www.naturalresources.sa.gov.au/samurraydarlingbasin



National Parks South Australia

www.parks.sa.gov.au

Fish Watch

For fishing regulations and reporting fishing offences, including those in sanctuary zones

www.pir.sa.gov.au/fisheries/fishwatch

T: 1800 065 522 (24hrs)

Whale and Dolphin information

Adelaide Dolphin Sanctuary

T: 8240 0193 (business hours)

Oil spills

To report an oil slick on the water or a spill from a ship

T: 8248 3505 or call on radio channel 12 at all hours.

Produced by: Department of Environment, Water and Natural Resources
GPO Box 1047 Adelaide SA 5001
www.marineparks.sa.gov.au

Data Source: Marine parks and topographic data - DEWNR

Compiled: 7 November, 2014

Projection: Lambert Conformal Conic

Datum: Geocentric Datum of Australia, 1994

© Copyright Department of Environment, Water and Natural Resources 2014.
All Rights Reserved. All works and information displayed are subject to Copyright. For the reproduction or publication beyond that permitted by the Copyright Act 1968 (Cwlth) written permission must be sought from the Department. Although every effort has been made to ensure the accuracy of the information displayed, the Department, its agents, officers and employees make no representations, either express or implied, that the information displayed is accurate or fit for any purpose and expressly disclaims all liability for loss or damage arising from reliance upon the information displayed.



Department of Environment,
Water and Natural Resources



National
Parks
South
Australia