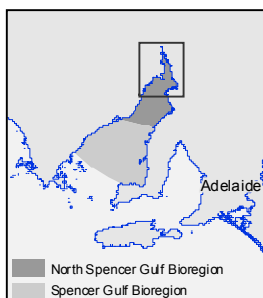
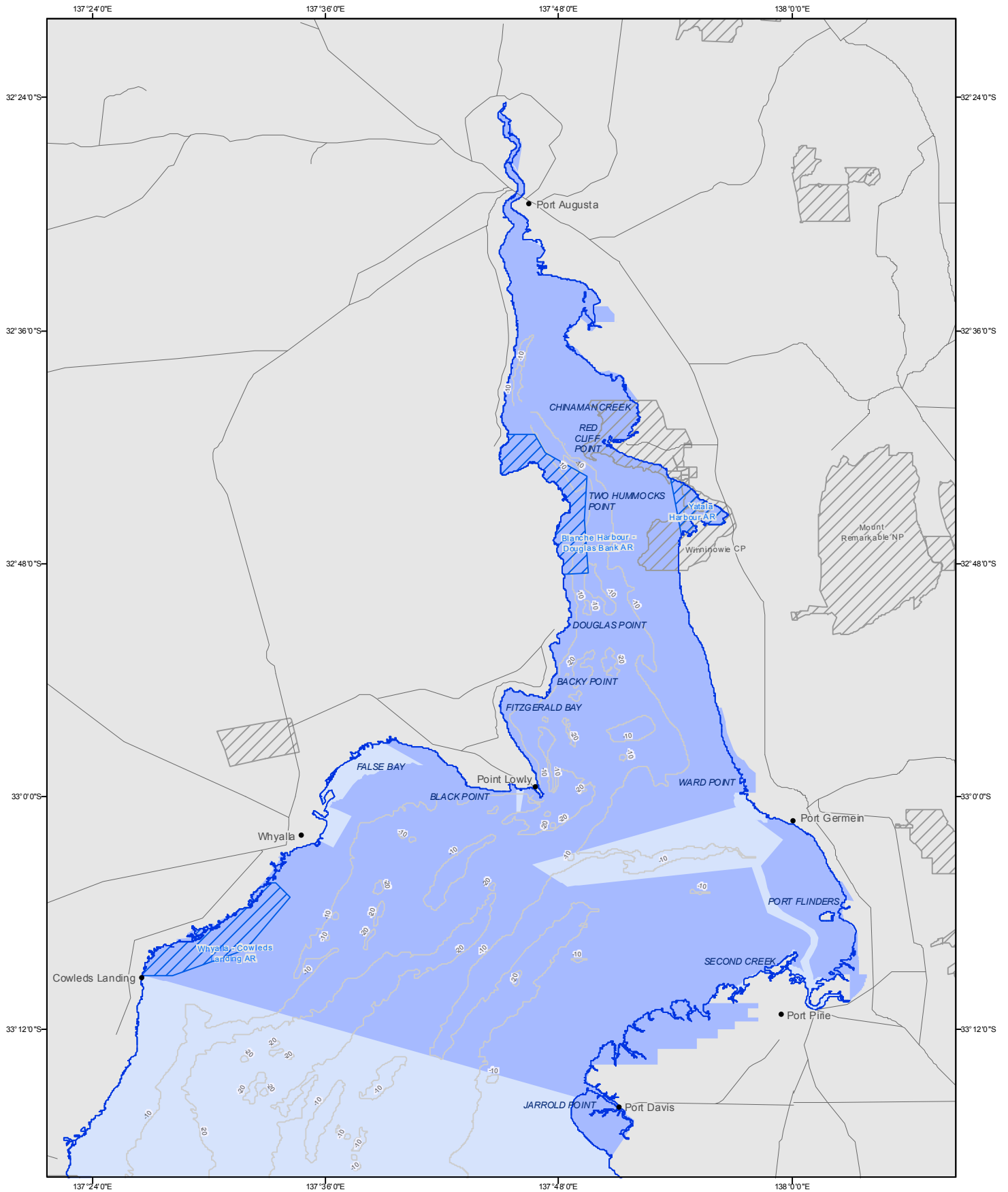
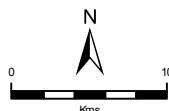


# Upper Spencer Gulf Marine Park



- Marine Park
- State Waters Jurisdiction
- Parks and Reserves
- Aquatic Reserves
- Bathymetry Contours
- Roads
- Coastline (median high water)



**Produced by** Coast and Marine Conservation  
Department for Environment and Heritage  
GPO Box 1047 Adelaide SA 5001  
[www.marineparks.sa.gov.au](http://www.marineparks.sa.gov.au)

**Data Source** Marine Parks, NPWSA,  
Bathymetry, Topographic Data - DEH  
Aquatic Reserves - PIRSA, Marine Bioregions - SARDI  
State Waters Jurisdiction - Geoscience Australia

**Compiled** 21 July 2009  
**Projection** Geographic  
**Datum** Geocentric Datum of Australia, 1994

© Copyright Department for Environment and Heritage 2009.  
All Rights Reserved. All works and information displayed are subject to Copyright. For their reproduction or publication beyond the permitted by the Copyright Act 1968 (Cwth) written permission must be sought from the Department.  
Although every effort has been made to ensure the accuracy of the information displayed, the Department, its agents, officers and employees make no representation, either express or implied, that the information displayed is accurate or fit for any purpose and in no way disclaims all liability for loss or damage arising from reliance upon the information displayed.