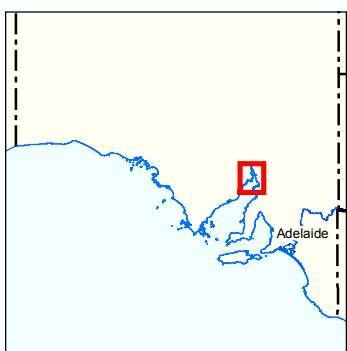
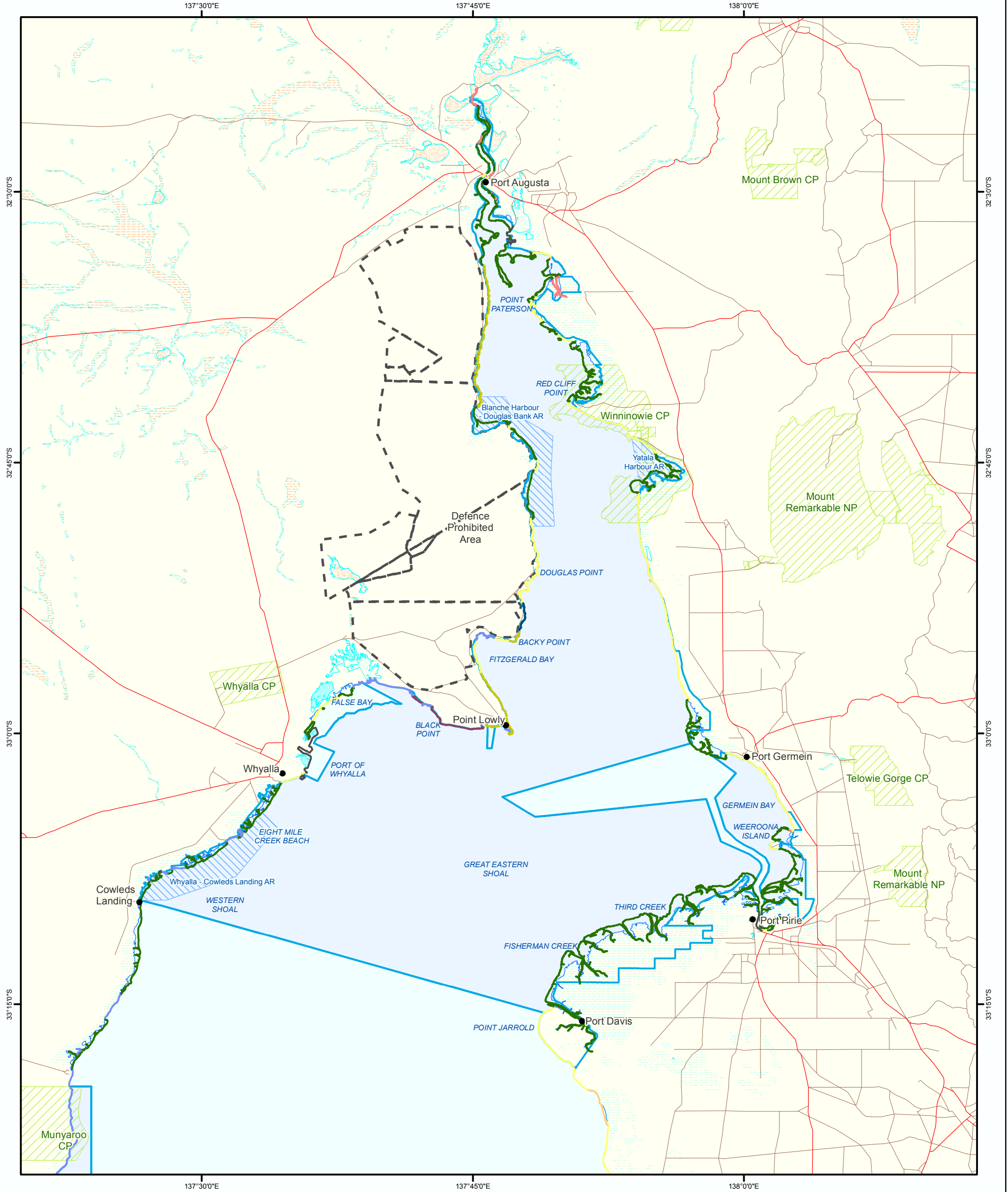
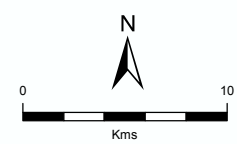


**Figure 7: Upper Spencer Gulf Marine Park**  
Coastal Shore Types



- |                                  |                                  |            |
|----------------------------------|----------------------------------|------------|
| Marine Parks                     | Sand Beach                       | Major Road |
| Lake - Perennial                 | Bedrock Platform                 | Minor Road |
| Lake - Intermittent              | Boulder, Cobble, Pebble Beach    |            |
| Lake - Mainly Dry                | Mixed Sand-Cobble / Pebble Beach |            |
| Land Subject to Inundation (STI) | Mixed Sand-Shellgrit Beach       |            |
| Land Subject to Flooding (STF)   | Mudflats                         |            |
| Parks and Reserves               | Sandflats                        |            |
| Aquatic Reserves                 | Mangrove                         |            |
| Defence Prohibited Area          | Saltmarsh                        |            |
|                                  | Artificial                       |            |



Produced by Coast and Marine Conservation  
Department for Environment and Heritage  
GPO BOX 1047 Adelaide SA 5001  
www.marineparks.sa.gov.au  
Data Source Marine Parks, Parks and Reserves,  
Topographic Data, Shoreline Classification, Defence  
Prohibited Area - DEH  
Aquatic Reserves - PIRSA  
Compiled 20 January 2010  
Projection Geographic  
Datum Geocentric Datum of Australia, 1994  
© Copyright Department for Environment and Heritage 2010.  
All Rights Reserved. All works and information displayed are subject to Copyright. For  
the reproduction or publication beyond that permitted by the Copyright Act 1968 (Cwth)  
written permission must be sought from the Department.  
Although every effort has been made to ensure the accuracy of the information displayed,  
the Department, its agents, officers and employees make no representations, either express  
or implied, that the information displayed is accurate or fit for any purpose, and expressly  
disclaims all liability for loss or damage arising from reliance upon the information displayed.

