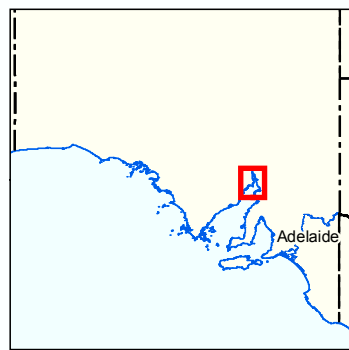
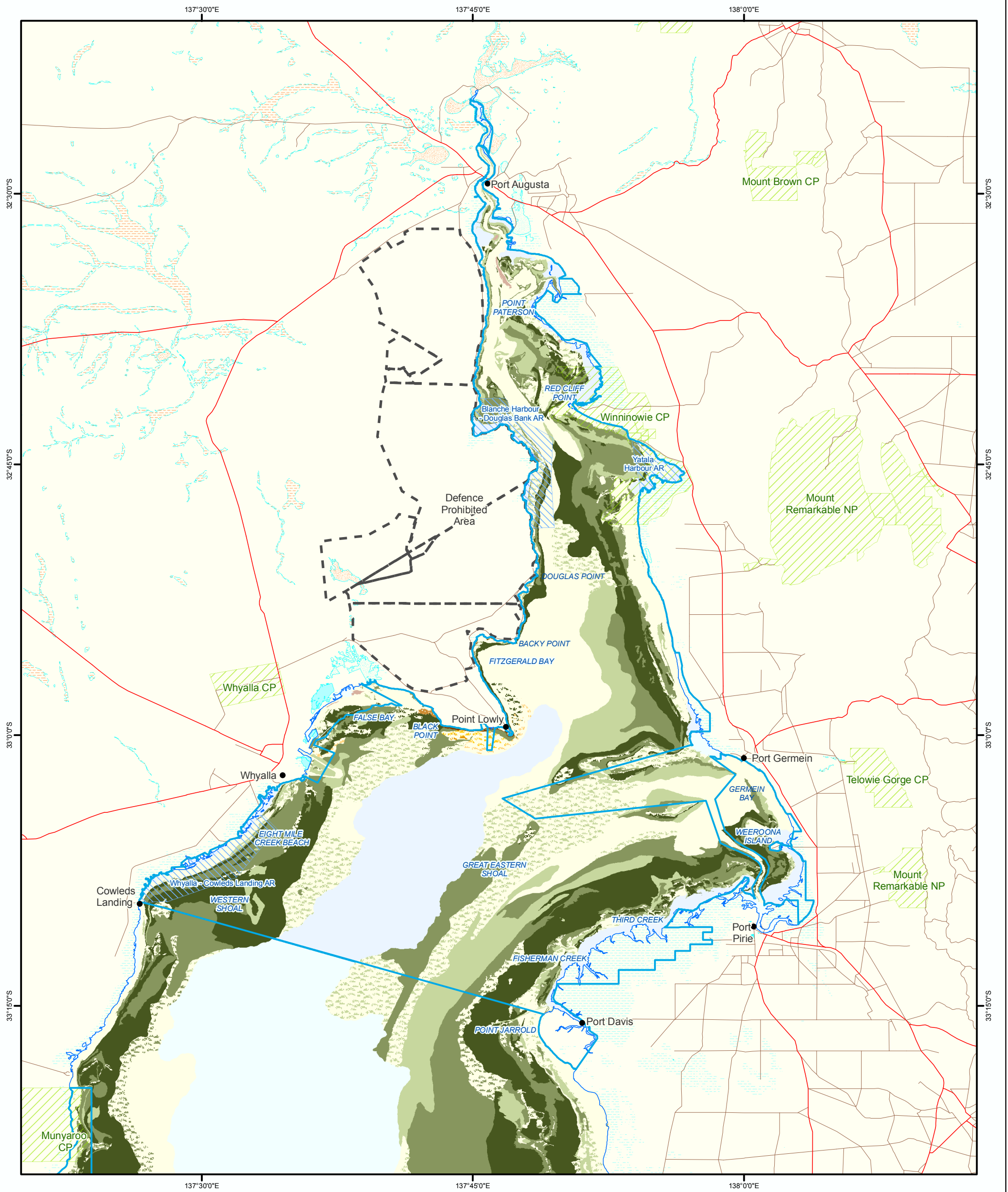


# Figure 5B: Upper Spencer Gulf Marine Park

## State Benthic Habitats



- |                              |                                  |                               |
|------------------------------|----------------------------------|-------------------------------|
| Patchy, Sparse, Macroalgae   | Patchy, Low Profile Reef         | Parks and Reserves            |
| Patchy, Medium, Macroalgae   | Continuous, Low Profile Reef     | Aquatic Reserves              |
| Patchy, Dense, Macroalgae    | Continuous, Medium Profile Reef  | Marine Parks                  |
| Patchy, Sparse, Seagrass     | Cobble                           | Defence Prohibited Area       |
| Patchy, Medium, Seagrass     | Saltmarsh / Mangrove             | Coastline (median high water) |
| Patchy, Dense, Seagrass      | Unconsolidated Bare Substrate    | Major Road                    |
| Continuous, Sparse, Seagrass | Lake - Perennial                 | Minor Road                    |
| Continuous, Medium, Seagrass | Lake - Intermittent              |                               |
| Continuous, Dense, Seagrass  | Lake - Mainly Dry                |                               |
|                              | Land Subject to Inundation (STI) |                               |
|                              | Land Subject to Flooding (STF)   |                               |

**Produced by** Coast and Marine Conservation Department for Environment and Heritage GPO BOX 1047 Adelaide SA 5001 www.marineparks.sa.gov.au

**Data Source** Marine Parks, Parks and Reserves, Topographic Data, Defence Prohibited Area - DEH Benthic Habitat Mapping - DEH & Eyre Peninsula NRM Aquatic Reserves - PIRSA

**Compiled** 10 August 2010

**Projection** Geographic

**Datum** Geocentric Datum of Australia, 1994

© Copyright Department for Environment and Heritage 2009. All Rights Reserved. All works and information displayed are subject to Copyright. For the reproduction or publication beyond that permitted by the Copyright Act 1968 (Cwth) written permission must be sought from the Department.

Although every effort has been made to ensure the accuracy of the information displayed, the Department, its agents, officers and employees make no representations, either express or implied, that the information displayed is accurate or fit for any purpose and expressly disclaims all liability for loss or damage arising from reliance upon the information displayed.

