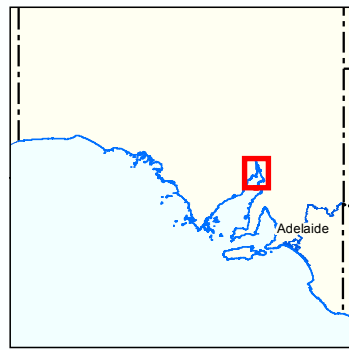
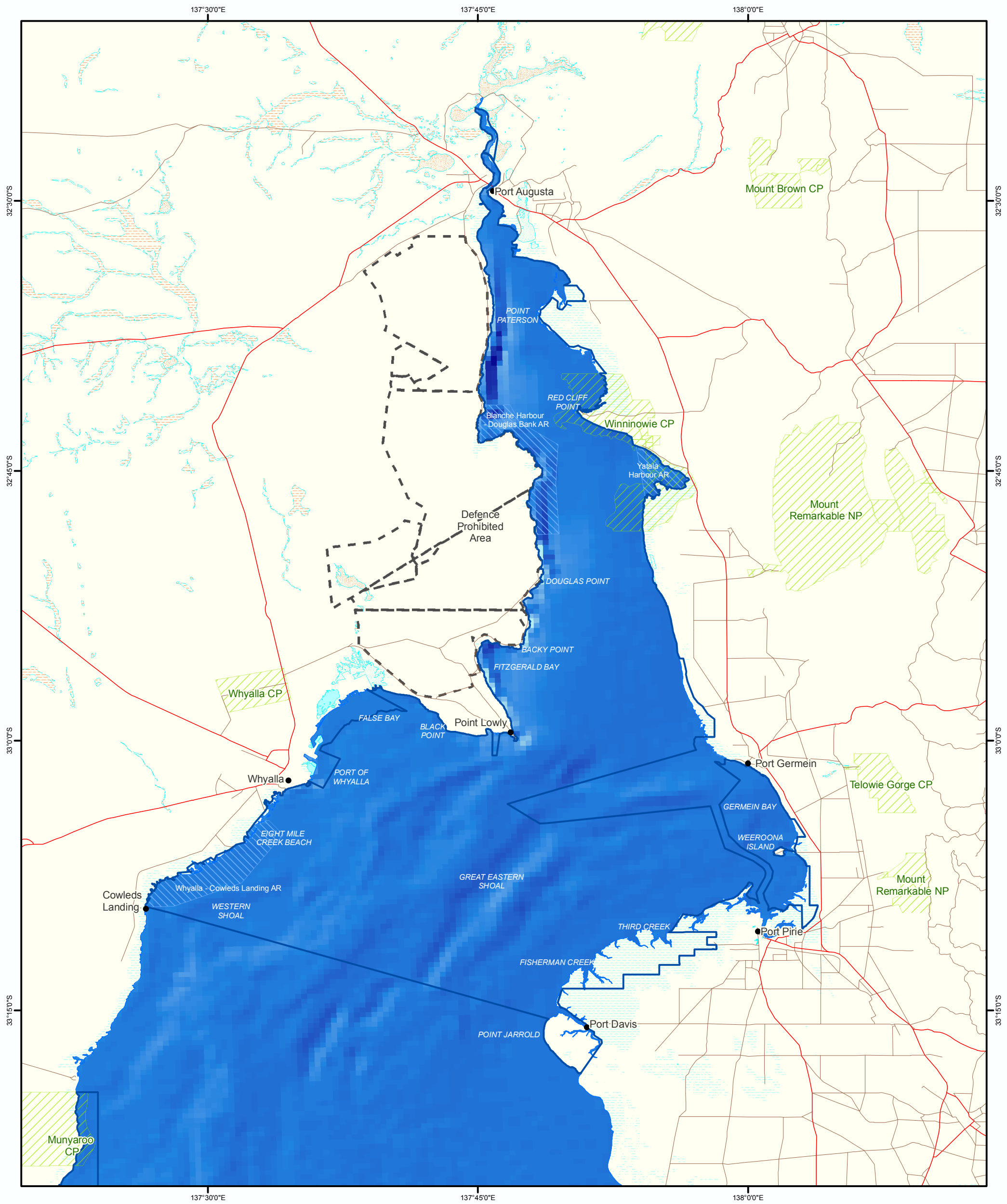


**Figure 2B: Upper Spencer Gulf Marine Park**  
Bathymetry



- |                                  |                               |
|----------------------------------|-------------------------------|
| <b>Depth (m)</b>                 | Parks and Reserves            |
| 50 m +                           | Aquatic Reserves              |
| 0 m                              | Marine Parks                  |
| Lake - Perennial                 | Defence Prohibited Area       |
| Lake - Intermittent              | Coastline (median high water) |
| Lake - Mainly Dry                | Major Road                    |
| Land Subject to Inundation (STI) | Minor Road                    |
| Land Subject to Flooding (STF)   |                               |

Produced by Coast and Marine Conservation  
Department for Environment and Heritage  
GPO BOX 1047 Adelaide SA 5001  
www.marineparks.sa.gov.au

Data Source Marine Parks, Parks and Reserves,  
Topographic Data, Bathymetry, Defence Prohibited  
Area - DEH  
Aquatic Reserves - PIRSA  
2 August 2010  
Geographic Datum Geocentric Datum of Australia, 1994

Compiled Projection Datum

© Copyright Department for Environment and Heritage 2010.  
All Rights Reserved. All works and information displayed are subject to Copyright. For the reproduction or publication beyond that permitted by the Copyright Act 1968 (Cwth) written permission must be sought from the Department.

Although every effort has been made to ensure the accuracy of the information displayed, the Department, its agents, officers and employees make no representations, either express or implied, that the information displayed is accurate or fit for any purpose and expressly disclaims all liability for loss or damage arising from reliance upon the information displayed.

0 10  
Kms

N

