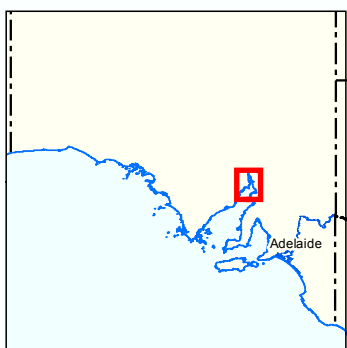
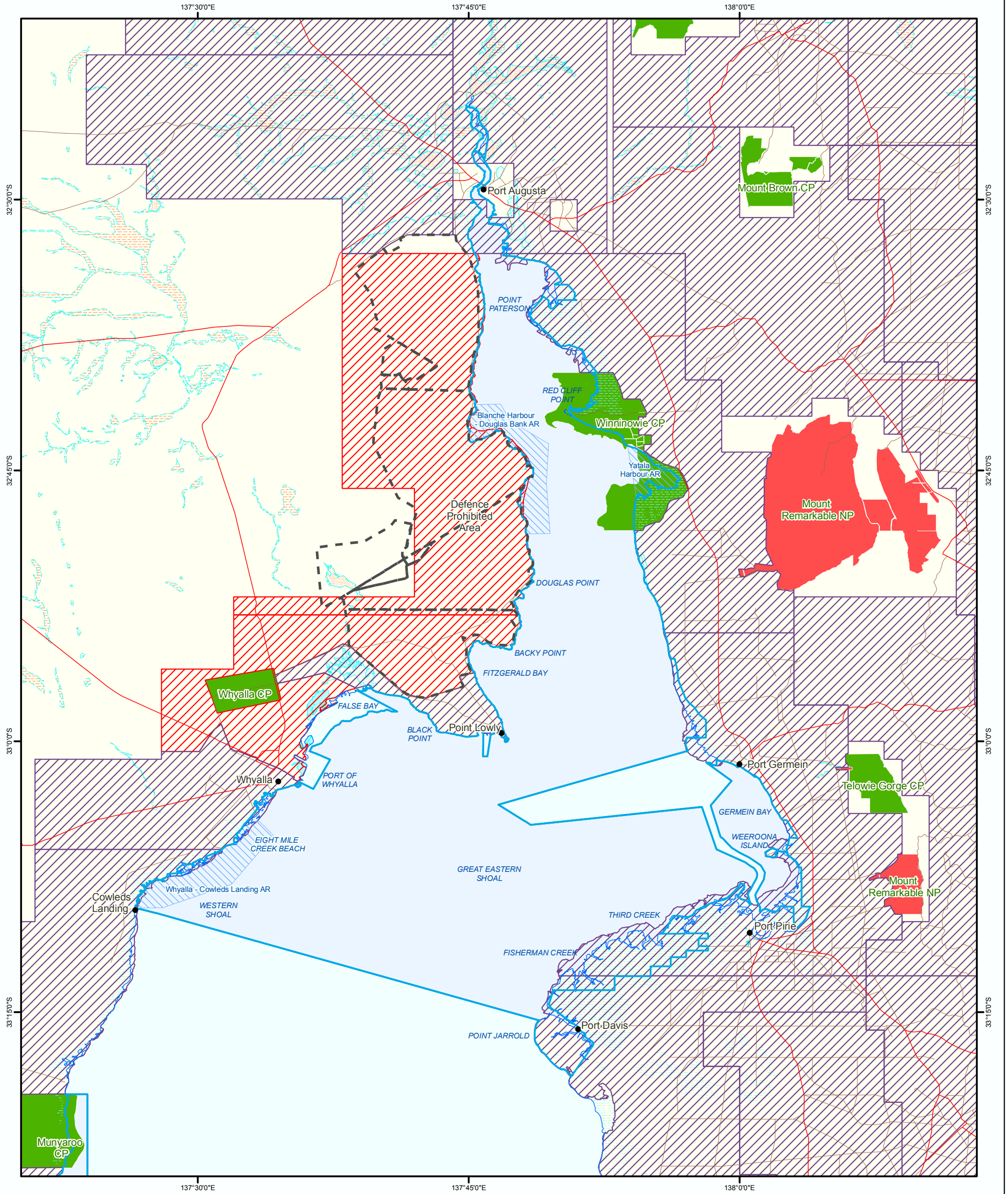
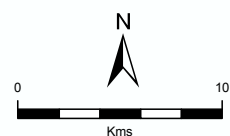


Figure 25: Upper Spencer Gulf Marine Park
Geothermal Exploration Licences and Applications



- | | |
|----------------------------------|-------------------------------------|
| Conservation Parks | Geothermal Exploration Licences |
| Conservation Reserves | Geothermal Exploration Applications |
| National Parks | Aquatic Reserves |
| Marine Parks | Defence Prohibited Area |
| Lake - Perennial | Coastline (median high water) |
| Lake - Intermittent | Major Road |
| Lake - Mainly Dry | Minor Road |
| Land Subject to Inundation (STI) | |
| Land Subject to Flooding (STF) | |



Produced by Coast and Marine Conservation
Department for Environment and Heritage
GPO BOX 1047 Adelaide SA 5001
www.marineparks.sa.gov.au
Marine Parks, Parks and Reserves, Topographic
Data, Defence Prohibited Area - DEH
Aquatic Reserves - PIRSA
Geothermal Exploration Licences and Applications - PIRSA

Compiled 11 August 2010
Projection Geographic
Datum Geocentric Datum of Australia, 1994

© Copyright Department for Environment and Heritage 2010.
All Rights Reserved. All works and information displayed are subject to Copyright. For
the reproduction or publication beyond that permitted by the Copyright Act 1968 (Cwth)
written permission must be sought from the Department.

Although every effort has been made to ensure the accuracy of the information displayed,
the Department, its agents, officers and employees make no representations, either express
or implied, that the information displayed is accurate or fit for any purpose and expressly
disclaims all liability for loss or damage arising from reliance upon the information displayed.