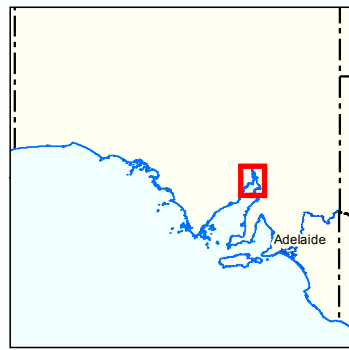
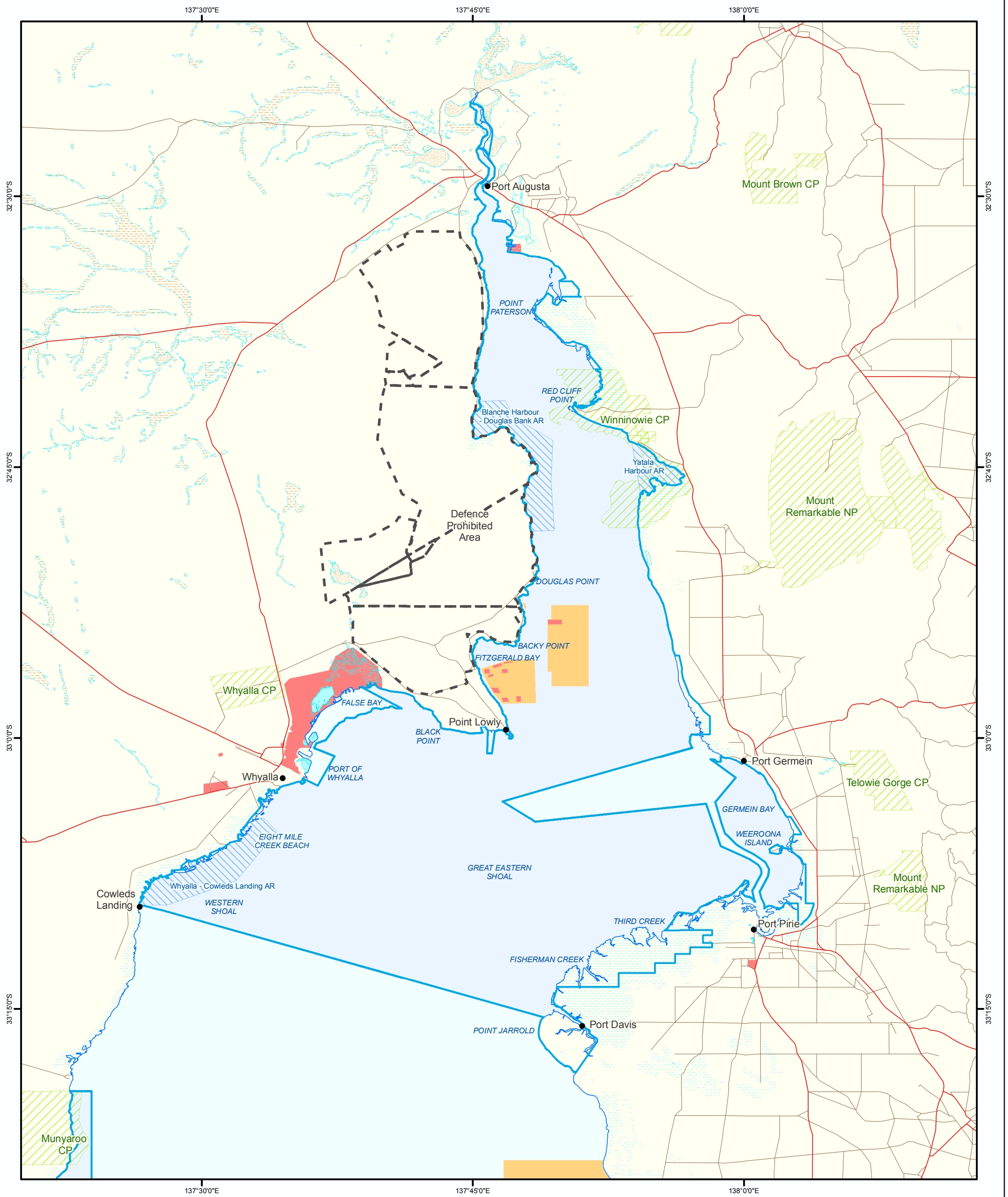


**Figure 23: Upper Spencer Gulf Marine Park**

**Aquaculture**



- |  |                                  |  |                               |
|--|----------------------------------|--|-------------------------------|
|  | Aquaculture Licences             |  | Parks and Reserves            |
|  | Aquaculture Zones                |  | Aquatic Reserves              |
|  | Marine Parks                     |  | Defence Prohibited Area       |
|  | Lake - Perennial                 |  | Coastline (median high water) |
|  | Lake - Intermittent              |  | Major Road                    |
|  | Lake - Mainly Dry                |  | Minor Road                    |
|  | Land Subject to Inundation (STI) |  |                               |
|  | Land Subject to Flooding (STF)   |  |                               |

Produced by Coast and Marine Conservation  
 Department for Environment and Heritage  
 GPO BOX 1047 Adelaide SA 5001  
[www.marineparks.sa.gov.au](http://www.marineparks.sa.gov.au)

Data Source  
 Marine Parks, Parks and Reserves, Topographic  
 Data, Defence Prohibited Area - DEH  
 Aquatic Reserves, Aquaculture - PIRSA

Compiled  
 Projection  
 Datum  
 3 August 2010  
 Geographic  
 Geocentric Datum of Australia, 1994

© Copyright Department for Environment and Heritage 2010.  
 All Rights Reserved. All works and information displayed are subject to Copyright. For the reproduction or publication beyond that permitted by the Copyright Act 1968 (Cwth) written permission must be sought from the Department.

Although every effort has been made to ensure the accuracy of the information displayed, the Department, its agents, officers and employees make no representations, either express or implied, that the information displayed is accurate or fit for any purpose and expressly disclaims all liability for loss or damage arising from reliance upon the information displayed.