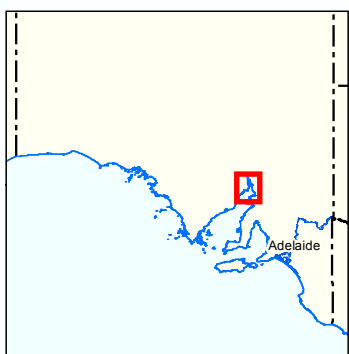
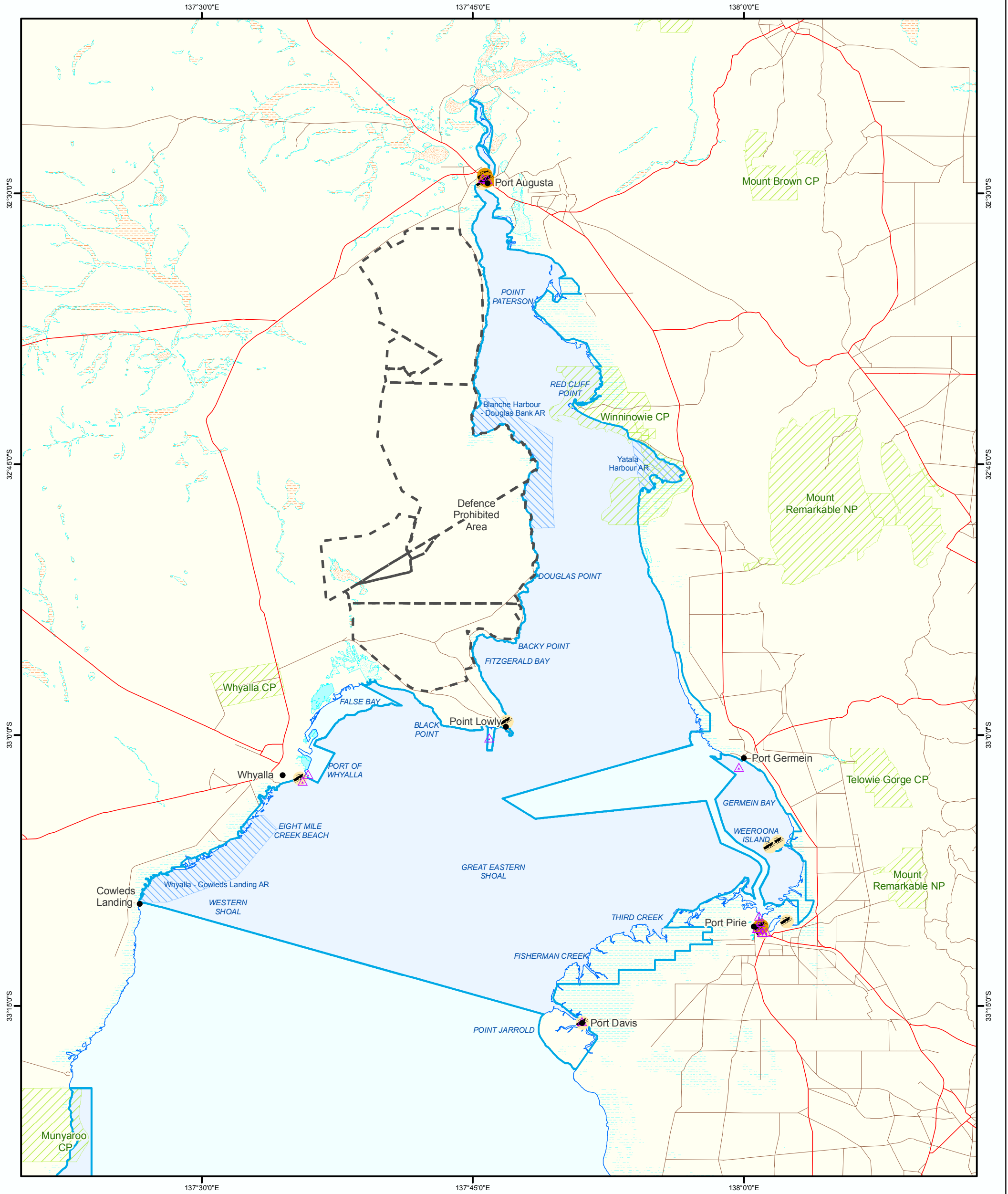
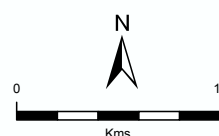


# Figure 13: Upper Spencer Gulf Marine Park

## Boat Ramps and Jetties



- |                                  |                               |
|----------------------------------|-------------------------------|
| Marine Parks                     | Coastline (median high water) |
| Lake - Perennial                 | Major Road                    |
| Lake - Intermittent              | Minor Road                    |
| Lake - Mainly Dry                | Boat Ramp                     |
| Land Subject to Inundation (STI) | Other Launch Access           |
| Land Subject to Flooding (STF)   | Jetty                         |
| Parks and Reserves               |                               |
| Aquatic Reserves                 |                               |
| Defence Prohibited Area          |                               |



Produced by Coast and Marine Conservation  
Department for Environment and Heritage  
GPO BOX 1047 Adelaide SA 5001  
www.marineparks.sa.gov.au

Data Source Marine Parks, Parks and Reserves, Topographic Data, Shoreline Constructions, Boat Ramps, Defence Prohibited Area - DEH, Aquatic Reserves - PIRSA

Compiled 4 August 2010  
Projection Geocentric Datum of Australia, 1994  
Datum

© Copyright Department for Environment and Heritage 2010.  
All Rights Reserved. All works and information displayed are subject to Copyright. For the reproduction or publication beyond that permitted by the Copyright Act 1968 (Cwth) written permission must be sought from the Department.

Although every effort has been made to ensure the accuracy of the information displayed, the Department, its agents, officers and employees make no representations, either express or implied, that the information displayed is accurate or fit for any purpose and expressly disclaims all liability for loss or damage arising from reliance upon the information displayed.