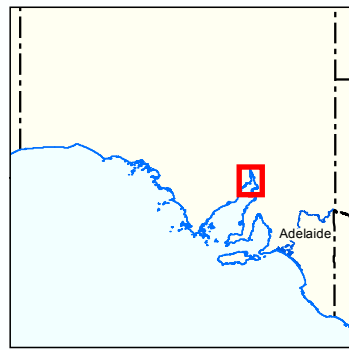
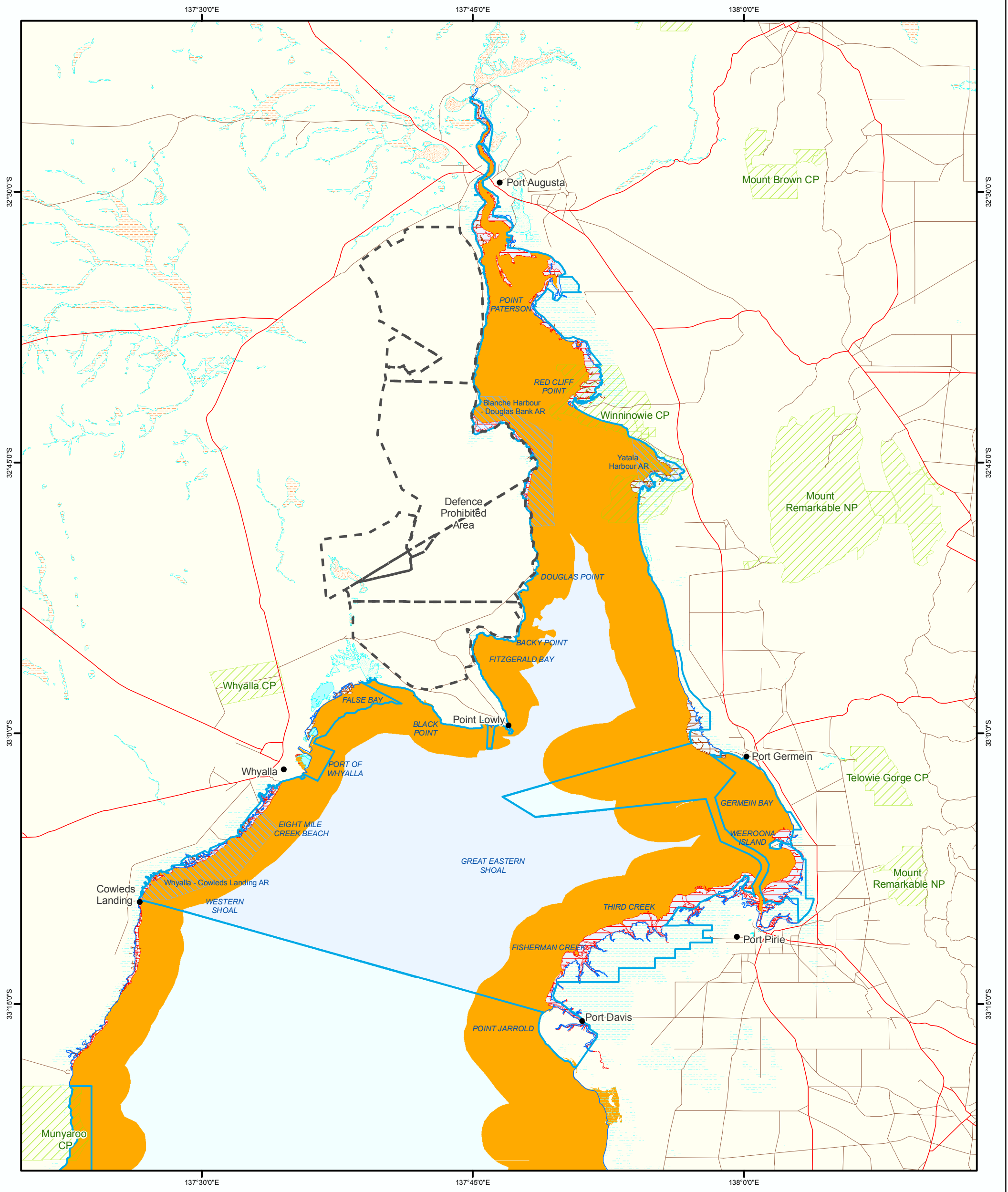
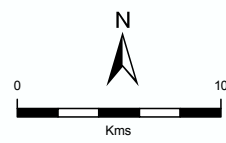


**Figure 12A: Upper Spencer Gulf Marine Park**  
 Fish Habitat Breeding, Spawning and Nursery for Commercial and Recreational Fisheries



- |                                  |                               |
|----------------------------------|-------------------------------|
| Marine Parks                     | Parks and Reserves            |
| Breeding, Spawning and Nursery   | Aquatic Reserves              |
| Spawning and Nursery             | Defence Prohibited Area       |
| Nursery                          | Coastline (median high water) |
| Lake - Perennial                 | Major Road                    |
| Lake - Intermittent              | Minor Road                    |
| Lake - Mainly Dry                |                               |
| Land Subject to Inundation (STI) |                               |
| Land Subject to Flooding (STF)   |                               |



**Produced by** Coast and Marine Conservation  
 Department of Environment and Natural Resources  
 GPO BOX 1047 Adelaide SA 5001  
[www.marineparks.sa.gov.au](http://www.marineparks.sa.gov.au)

**Data Source** Marine Parks, Parks and Reserves,  
 Topographic Data, Fish Habitats, Defence  
 Prohibited Area - DENR  
 Aquatic Reserves - PIRSA

**Compiled** 16 August 2010  
**Projection** Geocentric Datum of Australia, 1994

© Copyright Department of Environment and Natural Resources 2010.  
 All Rights Reserved. All works and information displayed are subject to Copyright. For  
 the reproduction or publication beyond that permitted by the Copyright Act 1968 (Cwth)  
 written permission must be sought from the Department.  
 Although every effort has been made to ensure the accuracy of the information displayed,  
 the Department, its agents, officers and employees make no representations, either express  
 or implied, that the information displayed is accurate or fit for any purpose and expressly  
 disclaims all liability for loss or damage arising from reliance upon the information displayed.

