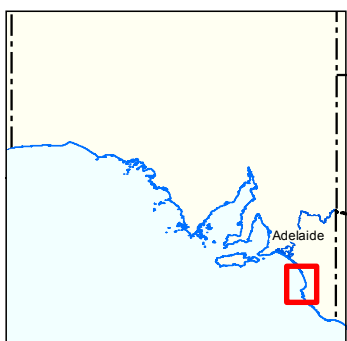
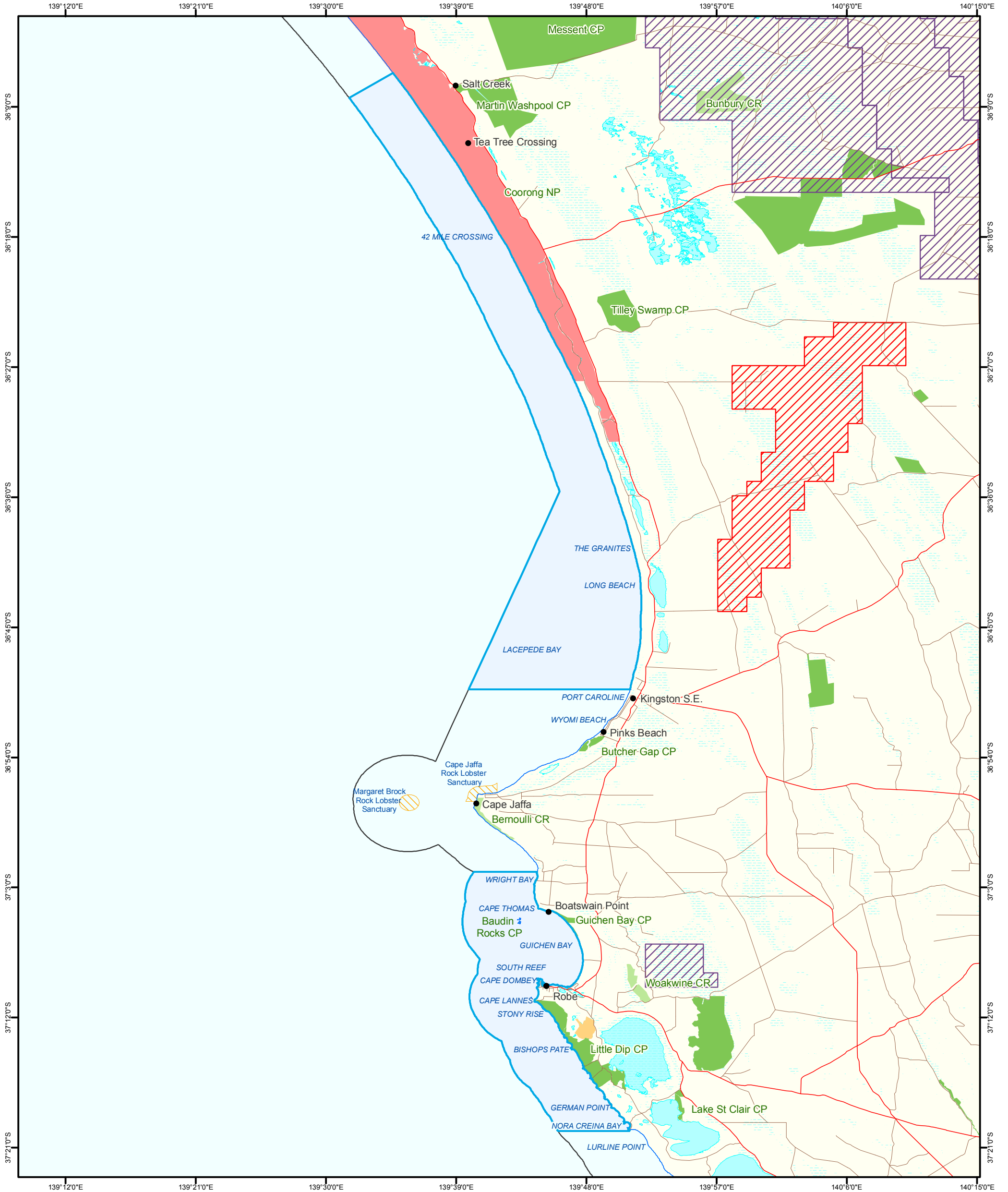
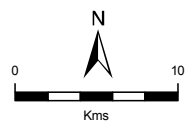


# Figure 24: Upper South East Marine Park

## Mineral Exploration Licences and Applications



- |                                  |                                  |                               |
|----------------------------------|----------------------------------|-------------------------------|
| Conservation Parks               | Mineral Exploration Licences     | Coastline (median high water) |
| Conservation Reserves            | Mineral Exploration Applications | Coastal Waters of the State   |
| Game Reserves                    | Rock Lobster Sanctuaries         | Major Road                    |
| National Parks                   |                                  | Minor Road                    |
| Lake - Perennial                 |                                  |                               |
| Lake - Intermittent              |                                  |                               |
| Land Subject to Inundation (STI) |                                  |                               |



**Produced by** Coast and Marine Conservation  
Department for Environment and Heritage  
GPO BOX 1047 Adelaide SA 5001  
[www.marineparks.sa.gov.au](http://www.marineparks.sa.gov.au)

**Data Source** Marine Parks, Parks and Reserves,  
Rock Lobster Sanctuaries, Topographic Data - DEH  
Mineral Exploration Licences and Applications - PIRSA  
Coastal Waters of the State - Geoscience Australia

**Compiled** 11 August 2010  
**Projection** Geographic  
**Datum** Geocentric Datum of Australia, 1994

© Copyright Department for Environment and Heritage 2010.  
All Rights Reserved. All works and information displayed are subject to Copyright. For the reproduction or publication beyond that permitted by the Copyright Act 1968 (Cwth) written permission must be sought from the Department.  
Although every effort has been made to ensure the accuracy of the information displayed, the Department, its agents, officers and employees make no representations, either express or implied, that the information displayed is accurate or fit for any purpose and expressly disclaims all liability for loss or damage arising from reliance upon the information displayed.

