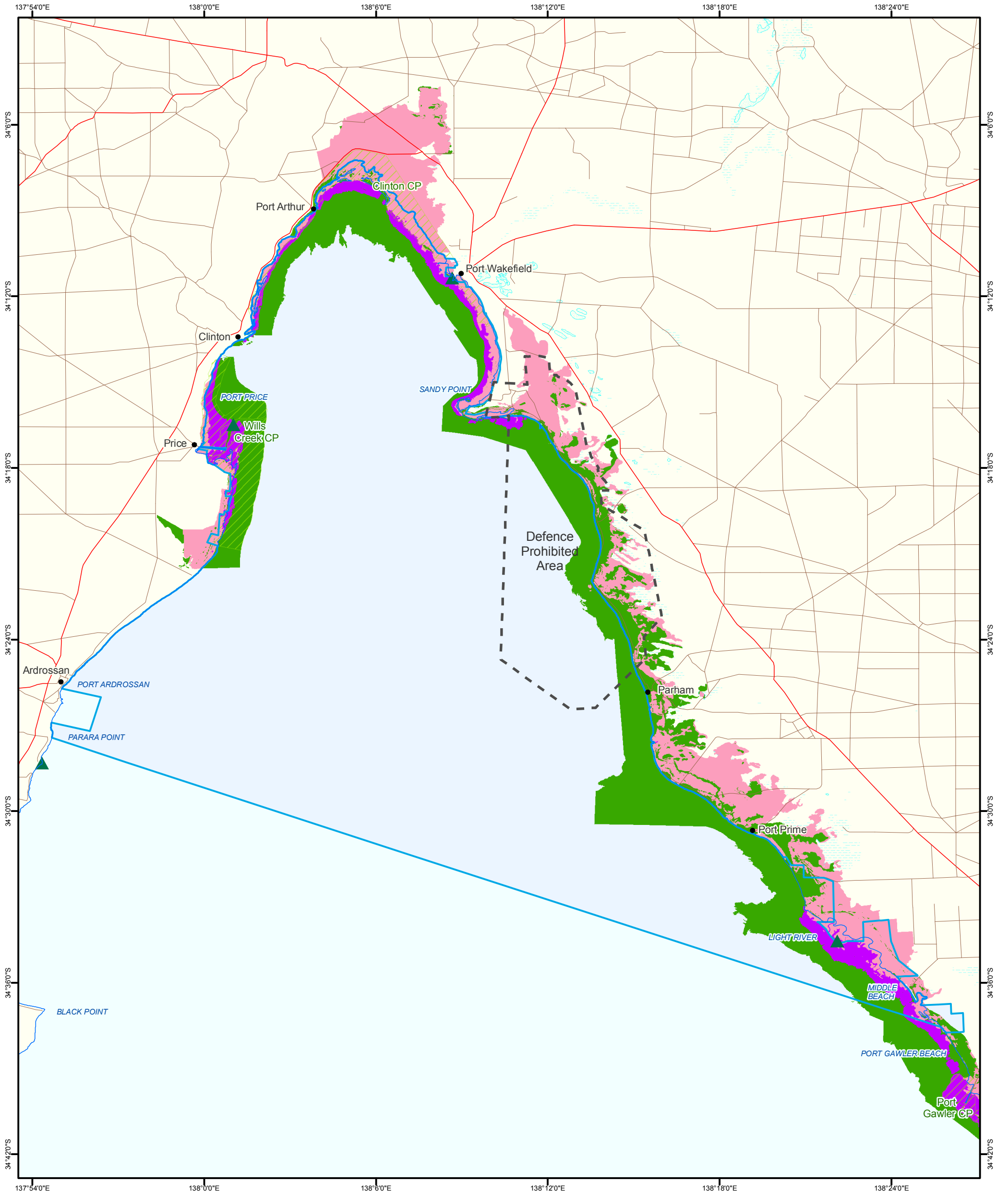
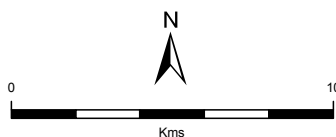


Figure 6: Upper Gulf St Vincent Marine Park
Saltmarsh, Mangrove, Wetlands and Estuaries



- | | |
|----------------------------------|-------------------------------|
| Saltmarsh | Coastline (median high water) |
| Mangrove | Major Road |
| Wetlands of National Importance | Minor Road |
| Marine Parks | Estuaries |
| Parks and Reserves | |
| Lake - Intermittent | |
| Lake - Mainly Dry | |
| Land Subject to Inundation (STI) | |
| Defence Prohibited Area | |



Produced by Coast and Marine Conservation
Department for Environment and Heritage
GPO BOX 1047 Adelaide SA 5001

Data Source www.marineparks.sa.gov.au
Marine Parks, Parks and Reserves, Topographic
Data, Saltmarsh Mangrove Habitat Mapping,
Coastal Wetlands, Estuaries, Wetlands - DEH
12 August 2010
Geographic
Datum Geocentric Datum of Australia, 1994

© Copyright Department for Environment and Heritage 2010.
All Rights Reserved. All works and information displayed are subject to Copyright. For
the reproduction or publication beyond that permitted by the Copyright Act 1968 (Cwth),
written permission must be sought from the Department.

Although every effort has been made to ensure the accuracy of the information displayed,
the Department, its agents, officers and employees make no representations, either express
or implied, that the information displayed is accurate or fit for any purpose and expressly
disclaims all liability for loss or damage arising from reliance upon the information displayed.

