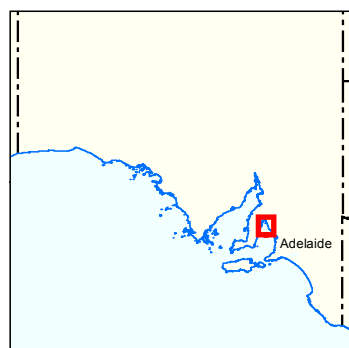
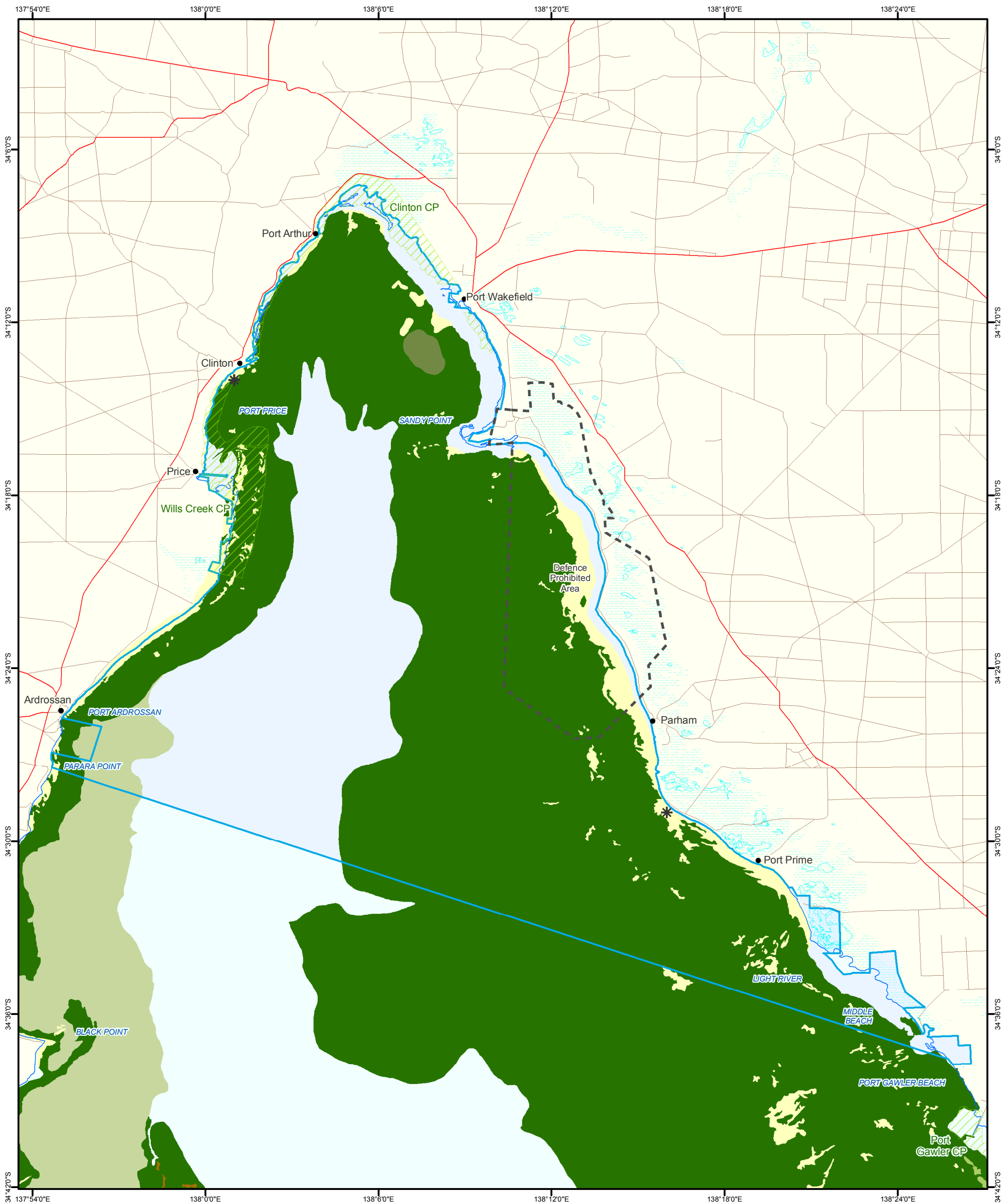
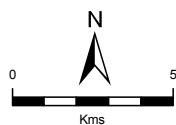


Figure 5A: Upper Gulf St Vincent Marine Park

National Benthic Habitats and Endangered Macroalgae



- | | | |
|---------------------------|----------------------------------|-------------------------------|
| Dense Seagrass | Parks and Reserves | Coastline (median high water) |
| Dense Seagrass Patches | Lake - Intermittent | Major Road |
| Medium Seagrass | Lake - Mainly Dry | Minor Road |
| Sparse Seagrass | Land Subject to Inundation (STI) | Endangered Macroalgae |
| Low Profile Platform Reef | Defence Prohibited Area | |
| Unvegetated Soft Bottom | | |
| Marine Parks | | |



Produced by Coast and Marine Conservation
Department for Environment and Heritage
GPO BOX 1047 Adelaide SA 5001

Data Source www.marineparks.sa.gov.au
Marine Parks, Parks and Reserves,
Topographic Data, Endangered Macroalgae - DEH
Benthic Habitat Mapping - CSIRO, SARDI-PIRSA & DEH
Aquatic Reserves - PIRSA
10 August 2010
Geographic
Datum Geocentric Datum of Australia, 1994

© Copyright Department for Environment and Heritage 2010.
All Rights Reserved. All works and information displayed are subject to Copyright. For
the reproduction or publication beyond that permitted by the Copyright Act 1968 (Cwth)
written permission must be sought from the Department.
Although every effort has been made to ensure the accuracy of the information displayed,
the Department, its agents, officers and employees make no representations, either express
or implied, that the information displayed is accurate or fit for any purpose and expressly
disclaims all liability for loss or damage arising from reliance upon the information displayed.

