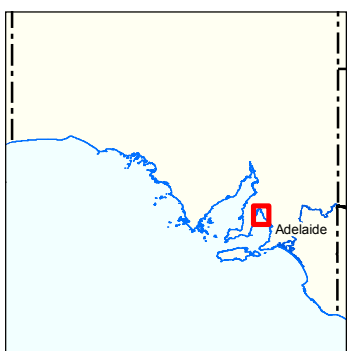
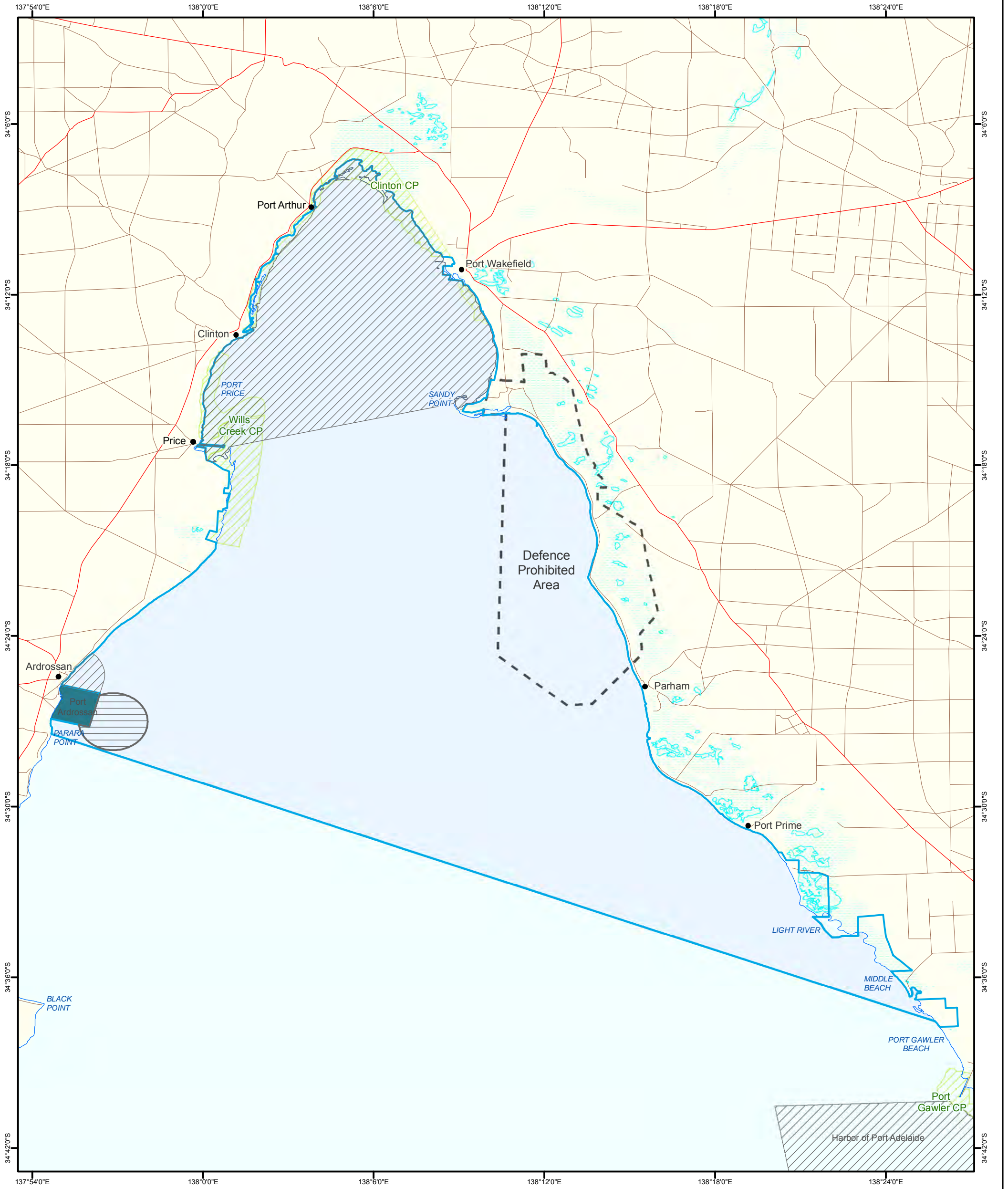
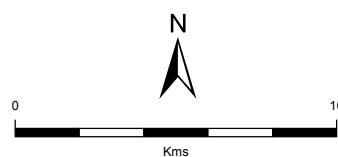


Figure 21: Upper Gulf St Vincent Marine Park

Shipping Infrastructure



- | | |
|----------------------------------|-------------------------------|
| Marine Parks | Coastline (median high water) |
| Port | Major Road |
| Harbour | Minor Road |
| Actual Anchorage Location | Lighthouse |
| Parks and Reserves | |
| Lake - Intermittent | |
| Lake - Mainly Dry | |
| Land Subject to Inundation (STI) | |
| Defence Prohibited Area | |



Produced by Coast and Marine Conservation
Department of Environment and Natural Resources
GPO BOX 1047 Adelaide SA 5001

Data Source www.marineparks.sa.gov.au
Marine Parks, Special Purpose Areas, Parks and Reserves,
Defence Prohibited Areas, Lighthouse,
Topographic Data - DENR
Port and Harbours - DENR and Harbours Navigation Act
Transshipment & Anchorage Locations - Flinders Ports
6 December 2011
Compiled Geographic
Datum Geocentric Datum of Australia, 1994

© Copyright Department for Environment and Heritage 2010.
All Rights Reserved. All works and information displayed are subject to Copyright. For the reproduction or publication beyond that permitted by the Copyright Act 1968 (Cwth) written permission must be sought from the Department.

Although every effort has been made to ensure the accuracy of the information displayed, the Department, its agents, officers and employees make no representations, either express or implied, that the information displayed is accurate or fit for any purpose and expressly disclaims all liability for loss or damage arising from reliance upon the information displayed.

