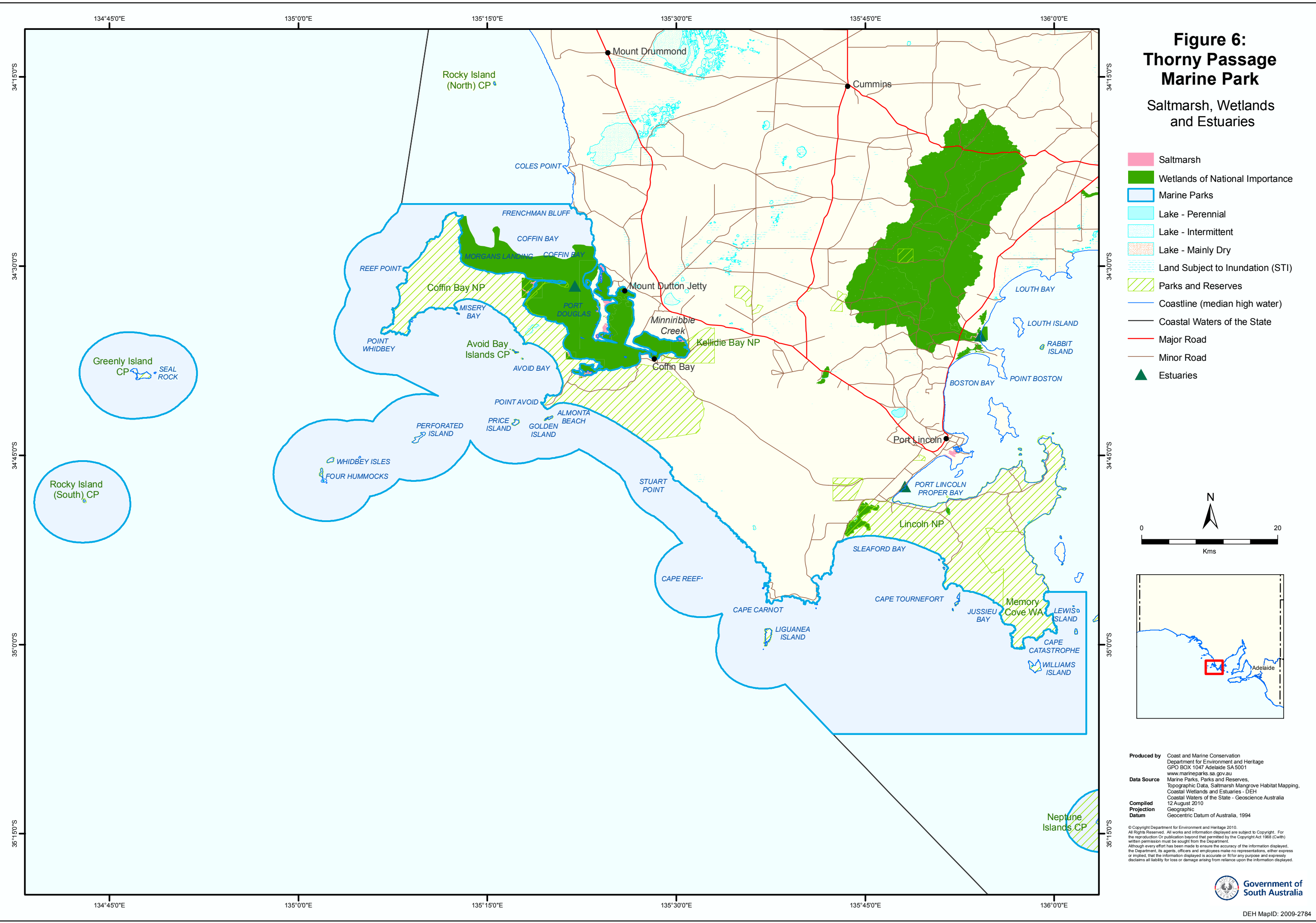
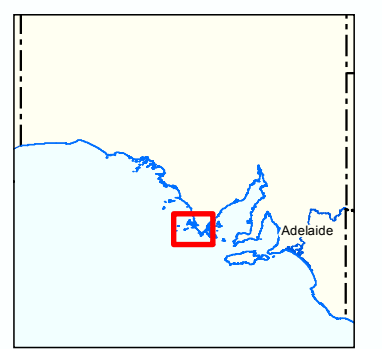
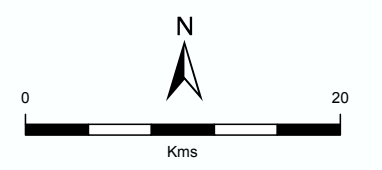


**Figure 6:
Thorny Passage
Marine Park**
Saltmarsh, Wetlands
and Estuaries



- Saltmarsh
- Wetlands of National Importance
- Marine Parks
- Lake - Perennial
- Lake - Intermittent
- Lake - Mainly Dry
- Land Subject to Inundation (STI)
- Parks and Reserves
- Coastline (median high water)
- Coastal Waters of the State
- Major Road
- Minor Road
- Estuaries



Produced by Coast and Marine Conservation
Department for Environment and Heritage
GPO BOX 1047 Adelaide SA 5001
www.marineparks.sa.gov.au

Data Source Marine Parks, Parks and Reserves,
Topographic Data, Saltmarsh Mangrove Habitat Mapping,
Coastal Wetlands and Estuaries - DEH
Coastal Waters of the State - Geoscience Australia
12 August 2010

**Compiled
Projection
Datum** Geographic
Geocentric Datum of Australia, 1994

© Copyright Department for Environment and Heritage 2010.
All Rights Reserved. All works and information displayed are subject to Copyright. For
the reproduction or publication beyond that permitted by the Copyright Act 1968 (Cwth)
written permission must be sought from the Department.
Although every effort has been made to ensure the accuracy of the information displayed,
the Department, its agents, officers and employees make no representations, either express
or implied, that the information displayed is accurate or fit for any purpose and expressly
disclaims all liability for loss or damage arising from reliance upon the information displayed.