

Sir Joseph Banks Group Marine Park - PART B

Zoning Advice from MPLAG Meeting 4 - 25/2/2011

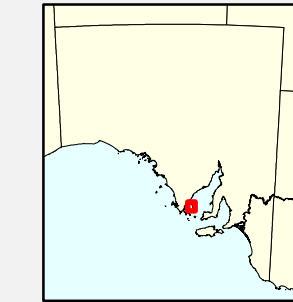
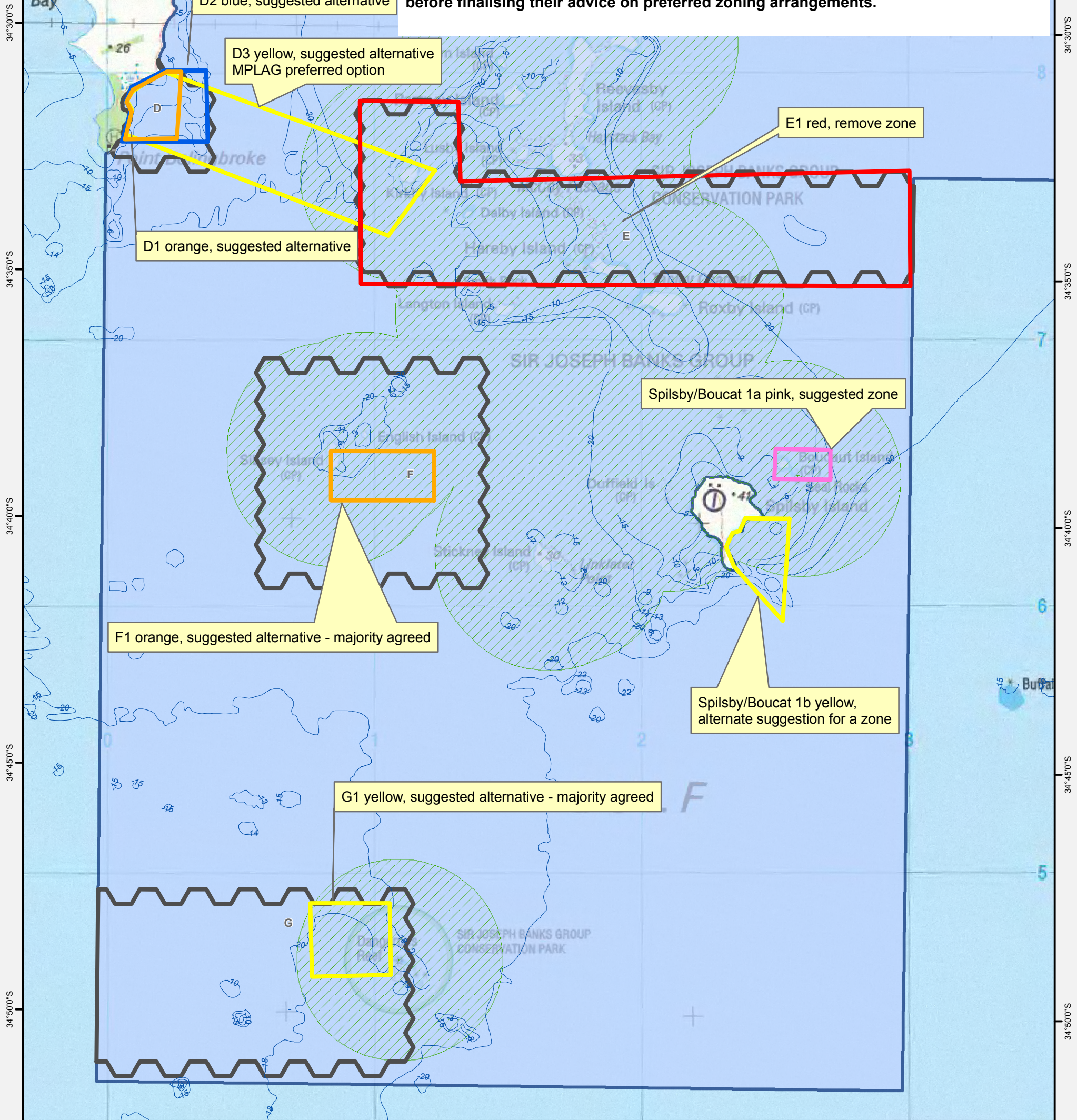
136°5'0"E 136°10'0"E 136°15'0"E 136°20'0"E 136°25'0"E

This map represents initial zoning advice from MPLAG members.

IMPORTANT: Please note that this initial zoning advice from MPLAG members:

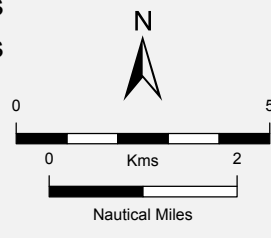
- is not yet complete;
- does not necessarily represent the views of all MPLAG members;
- is subject to change.

The MPLAGs will meet again in late April/early May to consider any further information before finalising their advice on preferred zoning arrangements.



- Parks and Reserves
- Marine Park
- Preliminary Zoning Scenarios
- Bathymetry
- Navigation Markers
- MPLAG Suggestions
- MPLAG Suggestions
- MPLAG Suggestions
- MPLAG Suggestions
- MPLAG Suggestions

Data Source Suggestions - MPLAG
Topographic Data, Parks and Reserves, Bathymetry - DENR
Compiled 9 March 2011
Projection Lambert Conformal Conic
Datum Geocentric Datum of Australia, 1994



Note: these comments should be read in conjunction with the feedback map.

Zone	Comment number (or colour)	Comment
D	D1 (orange)	Reduce size of zone, by only including a portion 2km out from the coast, using the existing DENR southern and northern boundaries.
	D2 (blue)	Extend the eastern boundary.
	D3 (yellow)	Connect zone D with a small portion of E, resulting in connectivity from the coast to offshore islands. Includes Kirkby Island as a trade off for the remainder of the islands in Zone E. MPLAG preferred option. Gallery not in favour (charter and marine scale impacts). Suggestion to do some video drops in the unmapped areas of this suggested zone.
E	E1 (red)	Include Kirkby Island in Zone D (Zone D Advice 3), but remove the remainder of Zone E. This area of the groups is extremely valuable to marine scale, charter and recreational fishers. One suggestion to include either Boucaut or some of Spilsby Island as a trade off (see comment below), however this did not have majority support.
F	F1 (orange)	Reduce the size of the zone, allowing access to most of Sibsey Island and all of English Island. This suggestion includes the SE side of Sibsey Island and the benthic habitat in this area. Majority support from MPLAG members.
G	G1 (yellow)	Reduce the size of this zone as it is important for charter, sardine, marine scale and recreational fishers. Include the NW part of Dangerous Reef to include a 3 x 2.6km zone. This suggested zone picks up some of the reef system and the surrounding benthic habitat, but still allows rec and commercial fishing to continue. It doesn't include the whole reef system as the Australian Sealions on it are already effectively protected through the existing Conservation Park. Majority support from MPLAG members.
Spilsby/Boucaut	Spilsby/Boucaut 1a (pink) Spilsby/Boucaut 1b (yellow)	Either include Boucaut Island as a trade off for removing most of Zone E <u>OR</u> Include the SE corner of Spilsby Island also as a trade off for E and a suggestion from the residents of Spilsby Island who would like some of this area highly protected in a SZ. Don't include both suggestions, only have one or the other. These suggestions had 50% support from the MPLAG and no support from the gallery.

		Video drops suggested for these areas.
--	--	--