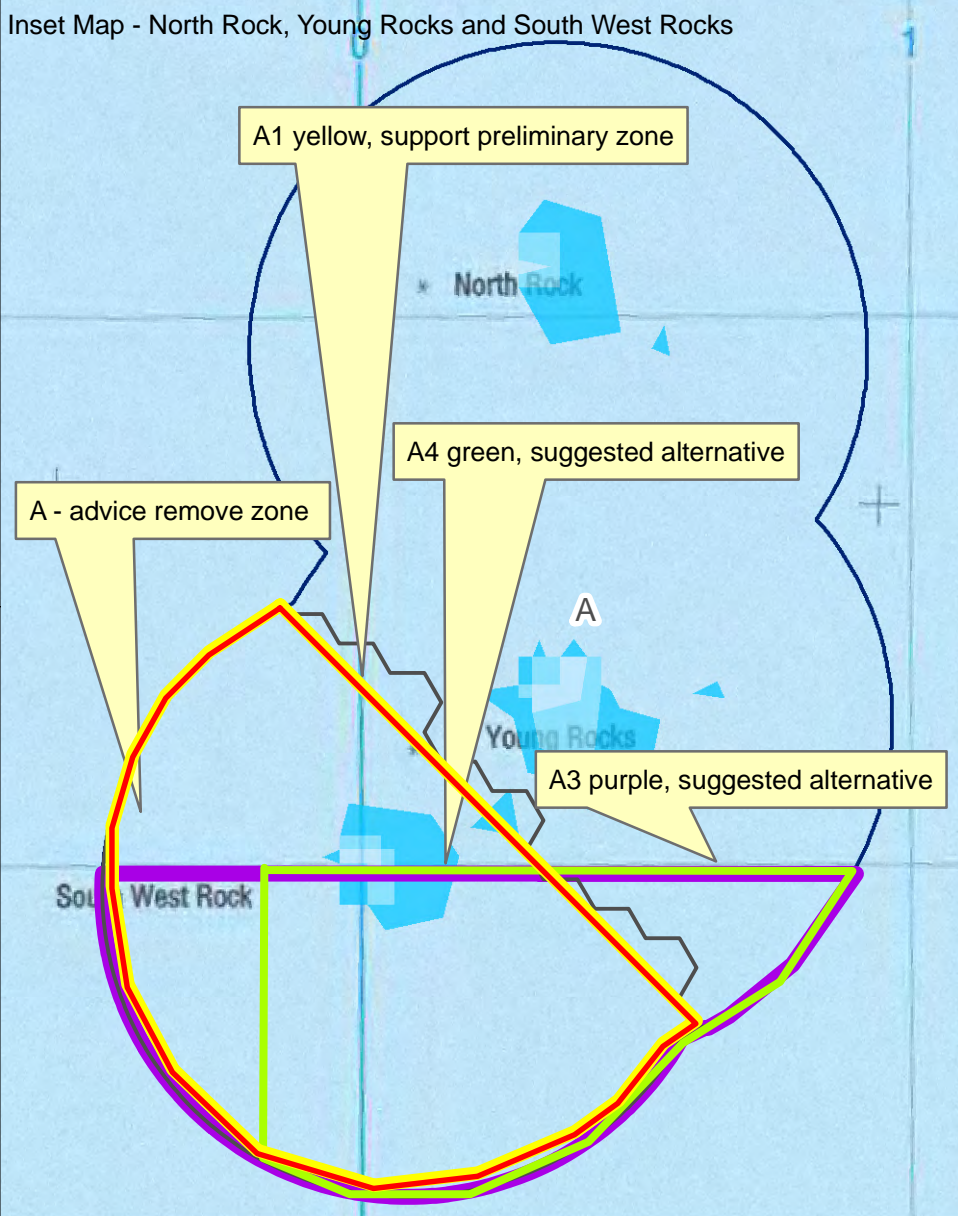
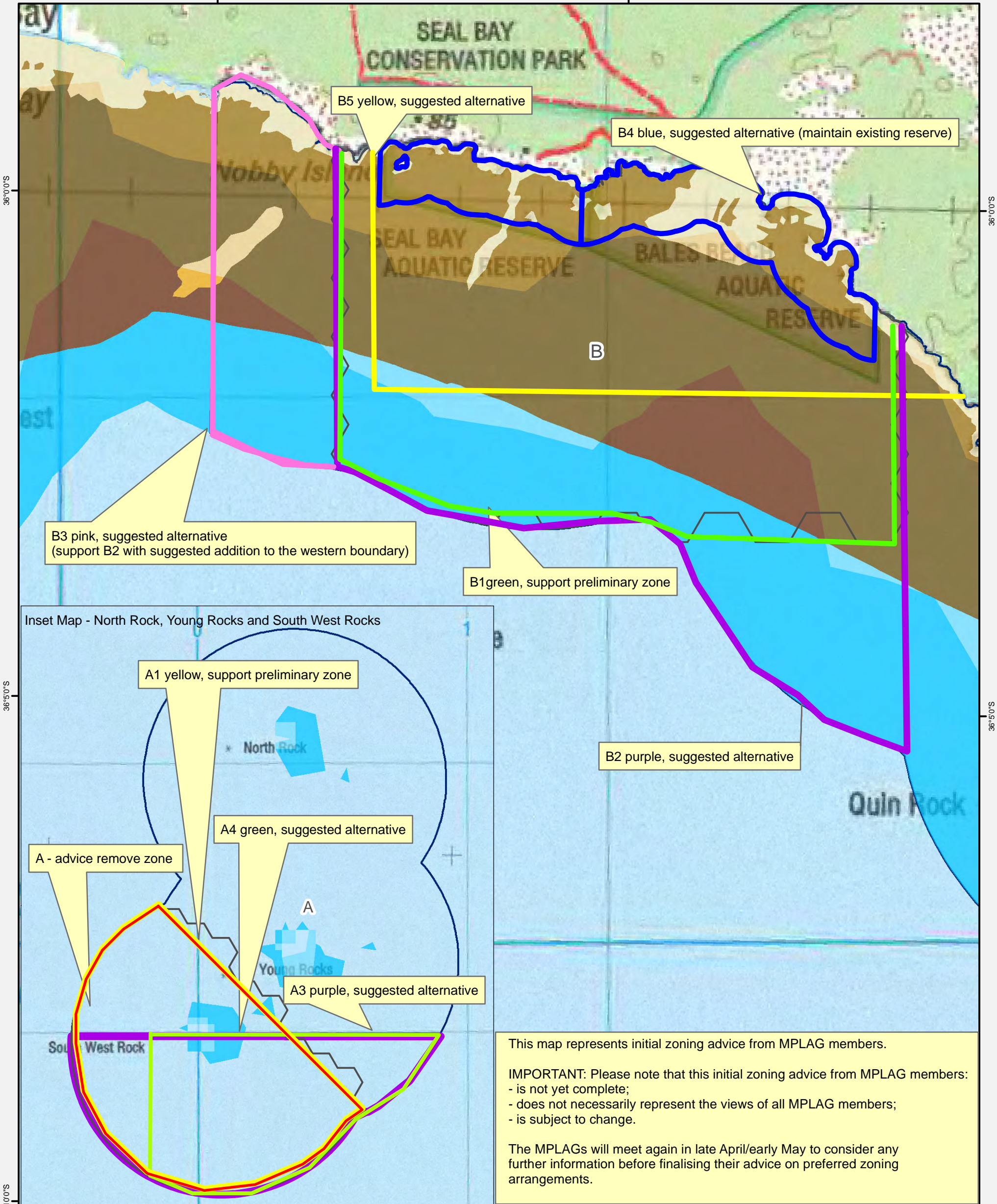


# Southern Kangaroo Island Marine Park - PART A

Zoning Advice from MPLAG Meeting 4 - 17/02/2011

137°15'0"E

137°20'0"E

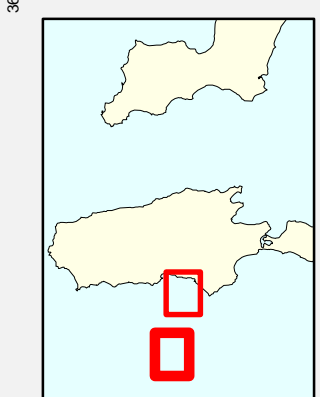


This map represents initial zoning advice from MPLAG members.

**IMPORTANT:** Please note that this initial zoning advice from MPLAG members:

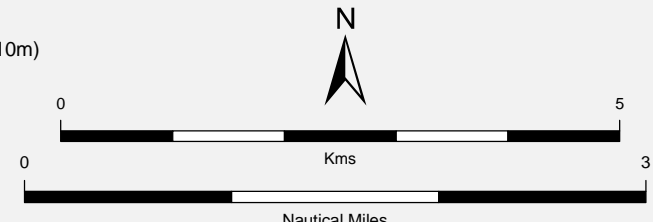
- is not yet complete;
- does not necessarily represent the views of all MPLAG members;
- is subject to change.

The MPLAGs will meet again in late April/early May to consider any further information before finalising their advice on preferred zoning arrangements.



- Preliminary Zoning Scenarios
- State Marine Park Network
- MPLAG Suggestions
- MPLAG Suggestions
- MPLAG Suggestions
- MPLAG Suggestions
- MPLAG Suggestions
- MPLAG Suggestions

- Heavy Limestone or Calcarene Reef (0 to -10m)
- Low Profile Platform Reef (0 to -10m)
- Low Profile Platform Reef (-10m to -30m)
- Low Profile Platform Reef (-30 to -50m)
- Bare Sand (0 to -10m)
- Bare Sand (-10m to -30m)
- Bare Sand (-30 to -50m)
- Unmapped (0 to -10m)
- Unmapped (-10m to -30m)
- Unmapped (-30 to -50m)



**Data Source** Suggestions - MPLAG  
Topographic Maps - DENR  
Benthic Habitats - CSIRO, SARDI, DENR  
1 March 2011

**Compiled**  
**Projection** Lambert Conformal Conic  
**Datum** Geocentric Datum of Australia, 1994

**Marine Park: Southern Kangaroo Island Marine Park (MP17) PART A**

Date of meeting: 17/02/2011

*Note: these comments should be read in conjunction with the feedback map.*

<b>Zone</b>	<b>Comment number (or colour)</b>	<b>Comment</b>
A	A1 (yellow)	Maintain the preliminary zone A
	A2 (red)	Remove the zone altogether
	A3 (purple)	Dissect South West Rock horizontally and extend zone to the State waters limit
	A4 (green)	Place the zone over the southeast quadrant of South West Rock and extend the boundaries east and south to the State waters limit
B	B1 (green)	Maintain preliminary zone
	B2 (purple)	Extend the south-eastern corner to the State waters limit
	B3 (pink)	Extend B2 (purple) to the western boundary of the marine park
	B4 (blue)	Reduce zone to only include the existing aquatic reserves (Seal Bay and Bales Beach)
	B5 (yellow)	Reduce southern boundary extent, align western boundary with aquatic reserve boundary and extend slightly east towards Black Point