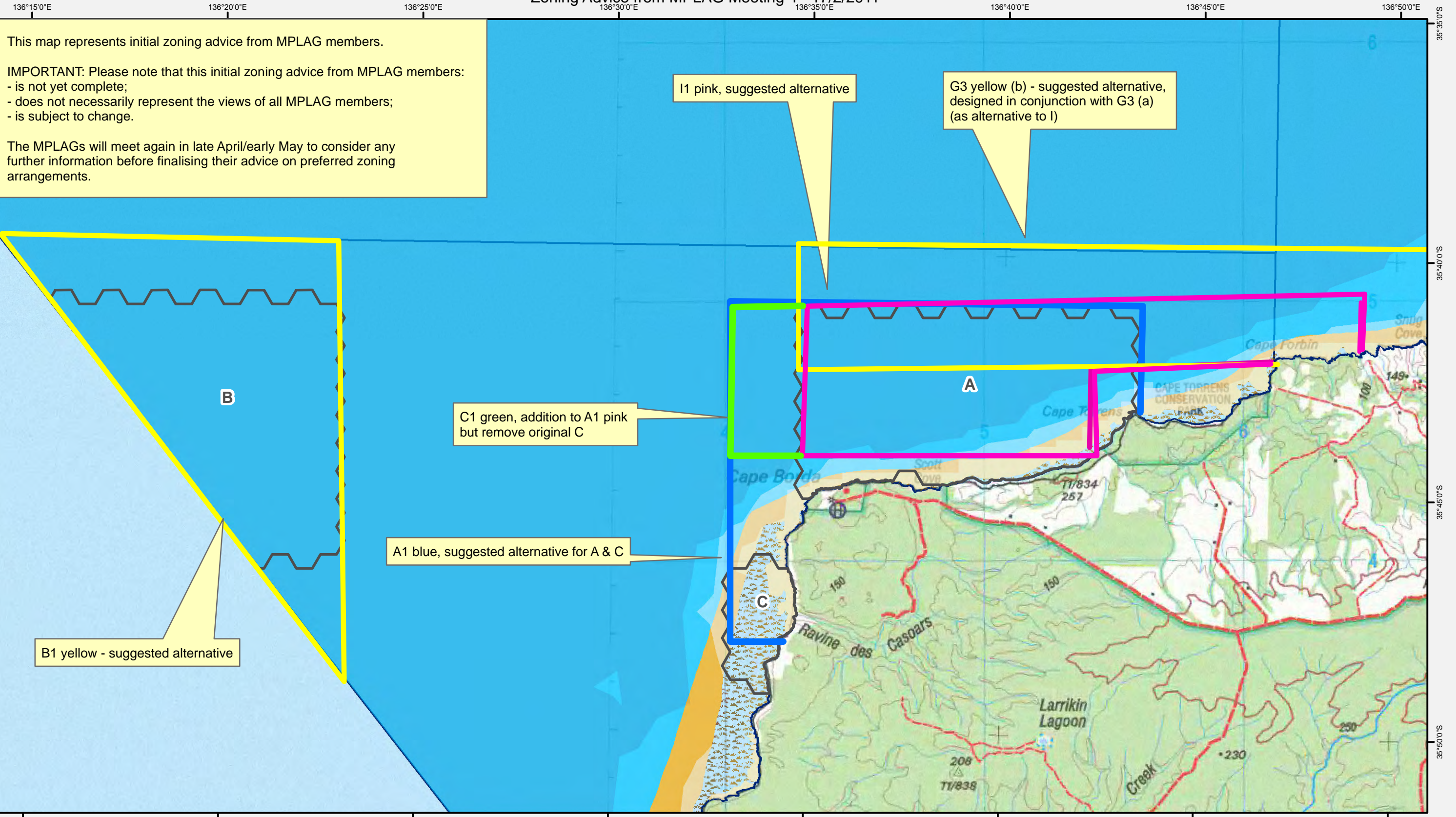


Western Kangaroo Island Marine Park - PART A

Zoning Advice from MPLAG Meeting 4 - 17/2/2011



This map represents initial zoning advice from MPLAG members.

IMPORTANT: Please note that this initial zoning advice from MPLAG members:

- is not yet complete;
- does not necessarily represent the views of all MPLAG members;
- is subject to change.

The MPLAGs will meet again in late April/early May to consider any further information before finalising their advice on preferred zoning arrangements.

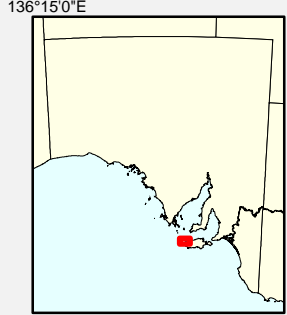
I1 pink, suggested alternative

G3 yellow (b) - suggested alternative, designed in conjunction with G3 (a) (as alternative to I)

C1 green, addition to A1 pink but remove original C

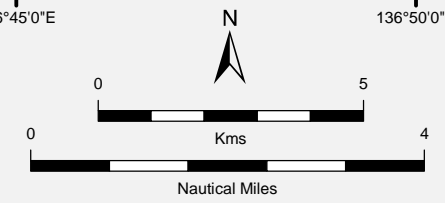
A1 blue, suggested alternative for A & C

B1 yellow - suggested alternative



- MPLAG Suggestions
- MPLAG Suggestions
- MPLAG Suggestions
- MPLAG Suggestions
- Preliminary Zoning Scenarios
- State Marine Park Network

- Heavy Limestone or Calcarene Reef (0 to -10m)
- Heavy Limestone or Calcarene Reef (-10m to -30m)
- Heavy Limestone or Calcarene Reef (-30 to -50m)
- Bare Sand (0 to -10m)
- Bare Sand (-10m to -30m)
- Bare Sand (-30 to -50m)
- Unmapped (0 to -10m)
- Unmapped (-10m to -30m)
- Unmapped (-30 to -50m)
- Unmapped (>-50m)



Data Source Suggestions - MPLAG
Topographic Maps - DENR
1 March 2011

Compiled Projection Datum Lambert Conformal Conic
Geocentric Datum of Australia, 1994

Marine Park: Western Kangaroo Island (MP16) PART A

Date of meeting:17/02/2011

Note: these comments should be read in conjunction with the feedback map.

Zone	Comment number (or colour)	Comment
A	A1 (blue)	Join zones A and C together but move the southern boundary of C to just below the Ravine des Casoars estuary mouth
B	B1 (yellow)	Increase the boundaries of zone B to meet the park boundary to the north and the limit of State waters to the south
C	C1 (green)	Move zone C north and join to the end of I1 (pink) from MP12 comments