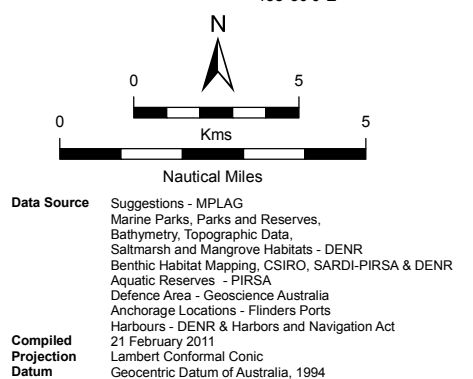
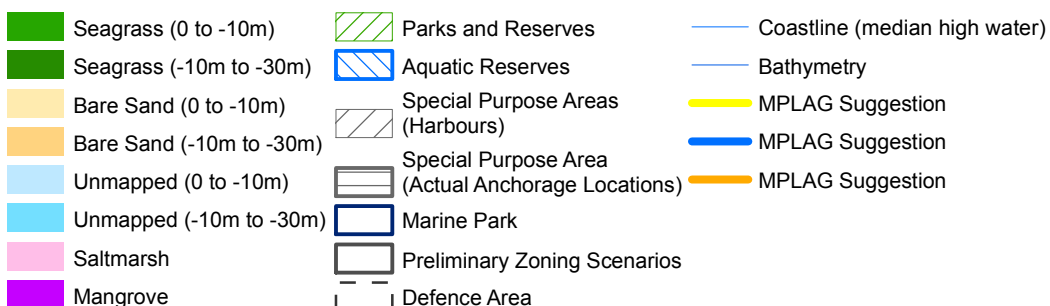
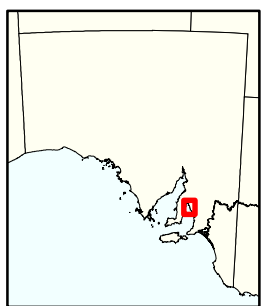
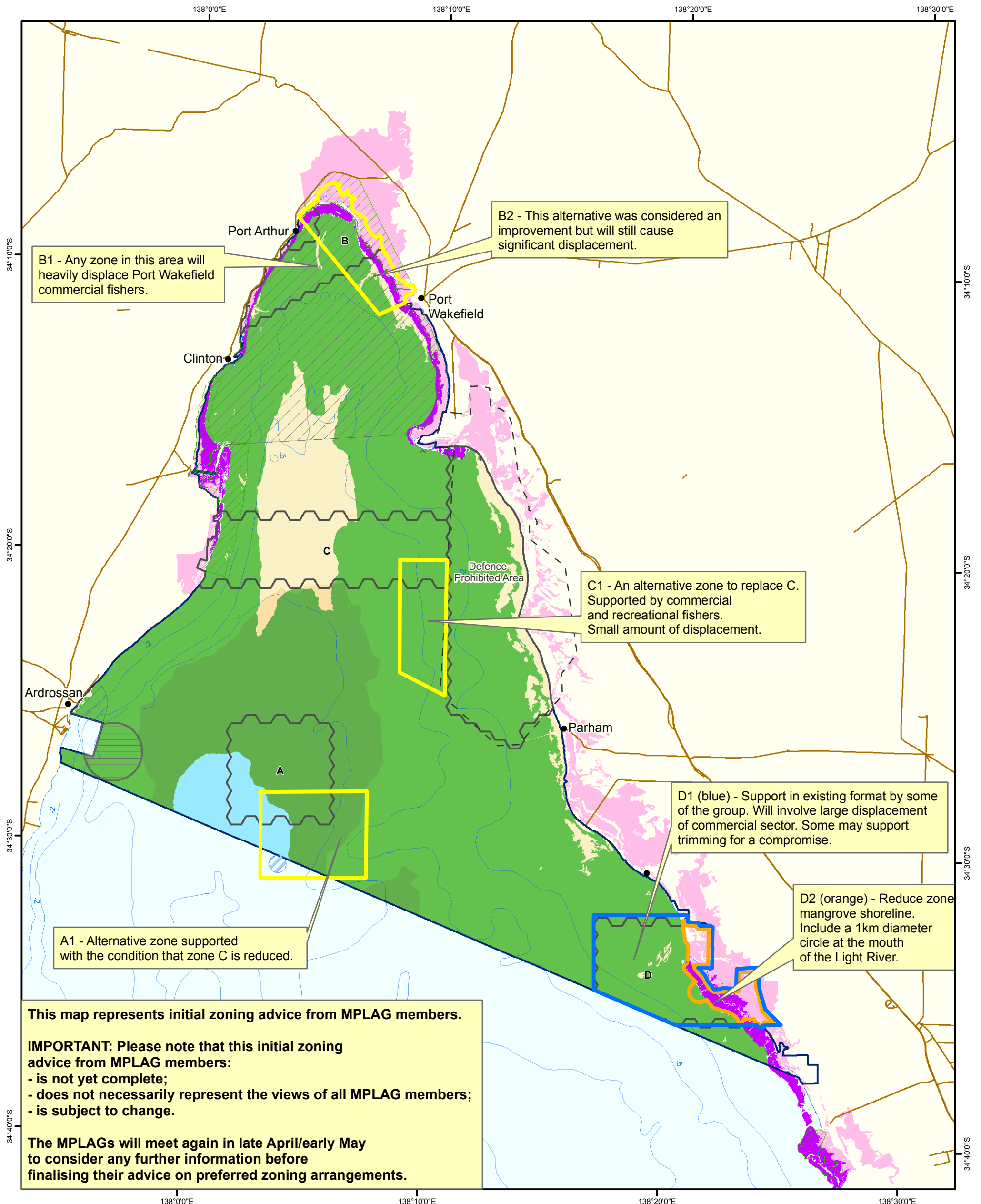


Upper Gulf St Vincent Marine Park

Zoning Advice from MPLAG Meeting 4 - 17/02/2011



Marine Park: Upper Gulf St Vincent**Date of meeting: 17/02/11*****Note: these comments should be read in conjunction with the feedback map.***

Zone	Comment number	Comment
A	1	This alternative moves the zone south to avoid some popular fishing grounds and to include the existing Zanoni protected area, which currently lies outside of the park boundary. The Barge south of the Zanoni will remain open to fishing. This zone was supported on the condition that Zone C is reduced.
B	1	Any sanctuary zone in this area will heavily displace Port Wakefield commercial net fishers.
B	2	This alternative zone was considered a compromise position that would cause less displacement than the zone in its current format. It was noted that significant displacement would still be caused.
C	1	This is an alternative zone to replace C, and was given support by both commercial and recreational fishers. It will still cause a small amount of displacement.
D	1	This zone was supported in its original format by some of the MPLAG group, while it was noted it will cause significant displacement of the commercial sector. Some members may support 'trimming' the zone to find a compromise position.
D	2	Reduce zone to the mangrove shoreline, while including a 1 km diameter circle at the mouth of the Light River. Providing protection for the Light River Delta flood plain. This option was supported by some of the MPLAG members.