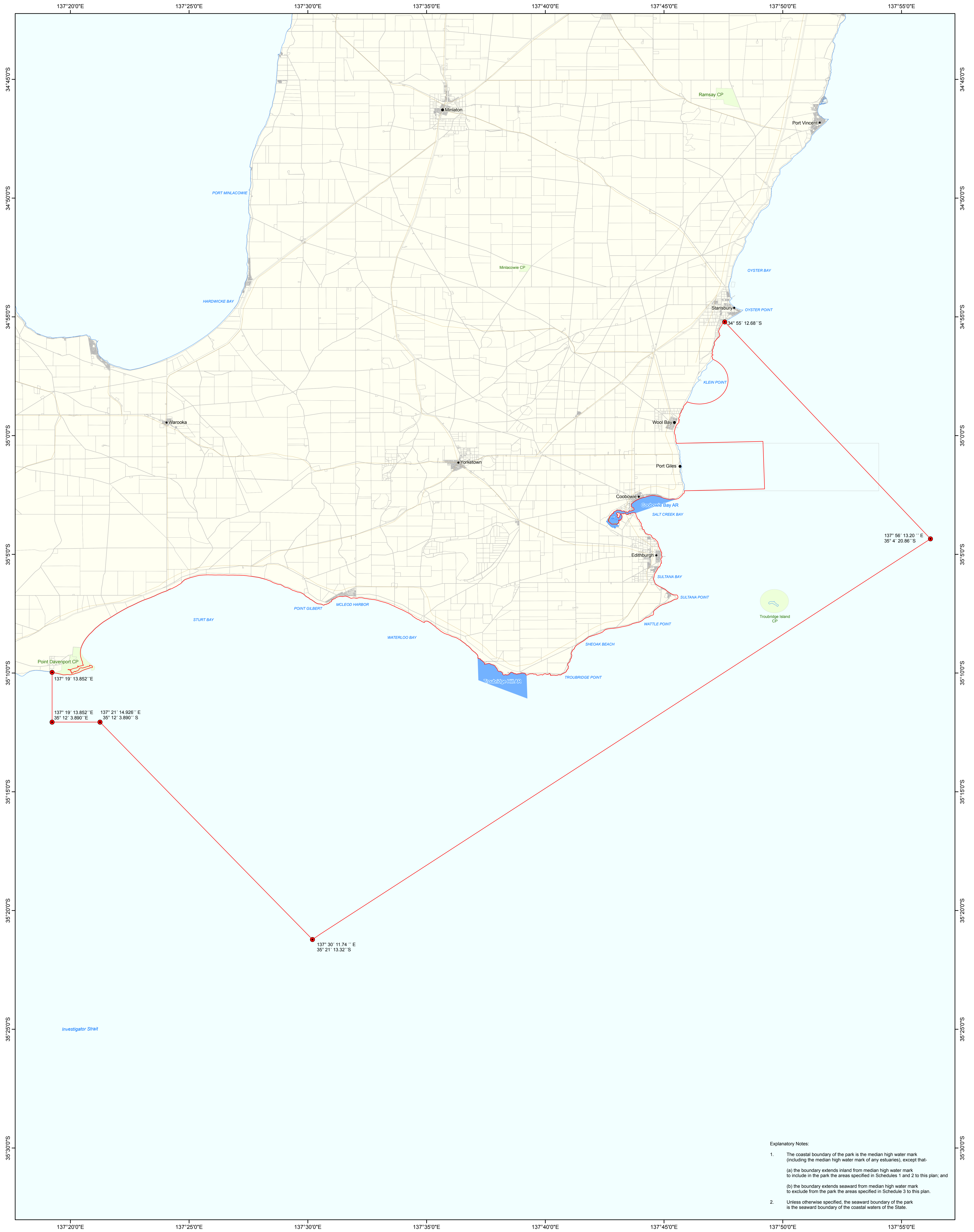
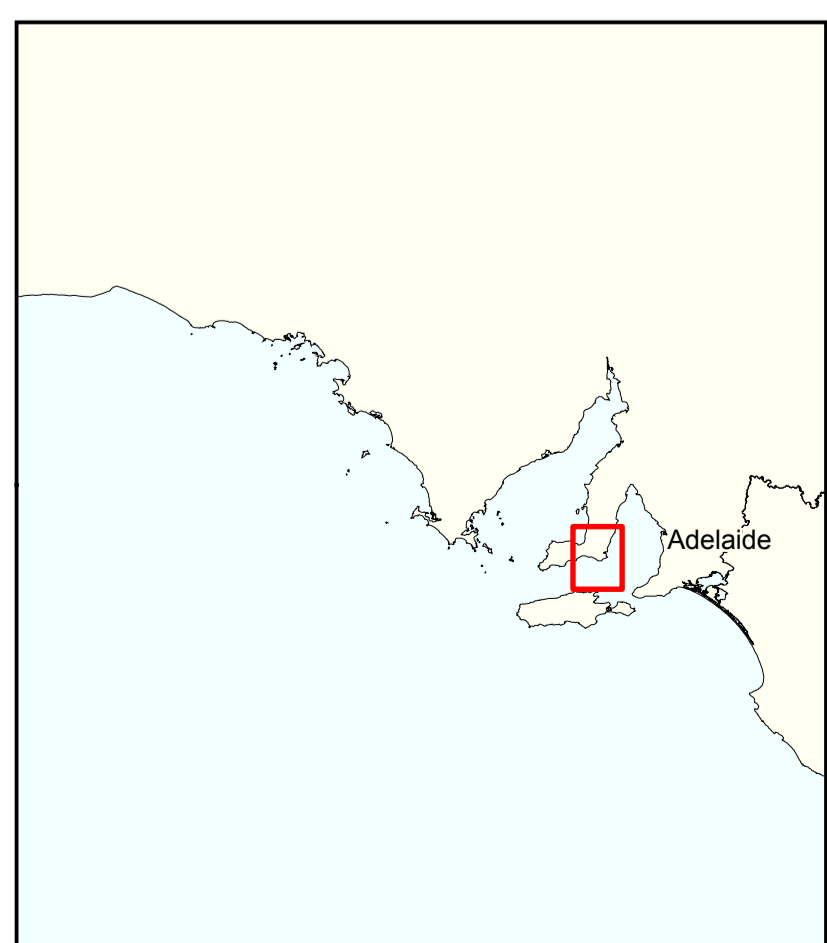


Lower Yorke Peninsula Marine Park

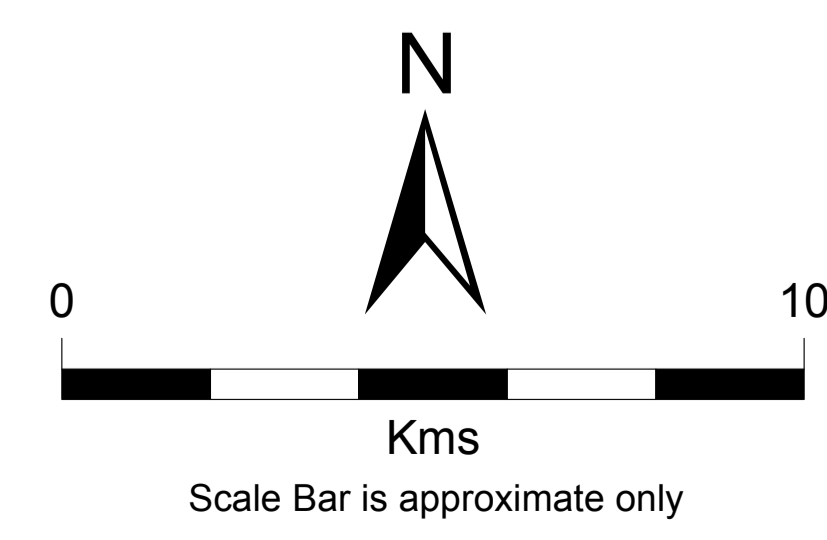


Explanatory Notes:

- The coastal boundary of the park is the median high water mark (including the median high water mark of any estuaries), except that:
 - the boundary extends inland from median high water mark to include in the park the areas specified in Schedules 1 and 2 to this plan; and
 - the boundary extends seaward from median high water mark to include from the park the areas specified in Schedule 3 to this plan.
- Unless otherwise specified, the seaward boundary of the park is the seaward boundary of the coastal waters of the State.



- Marine Park Boundaries
- Terrestrial Parks and Reserves
- Aquatic Reserves
- Coastal Crown Land Unallotted
- DCDB Parcels
- Coastline (median high water)
- Roads



Produced by Marine Parks Project
 Department of Environment, Water and Natural Resources
 GPO BOX 1047 Adelaide SA 5001
www.marineparks.sa.gov.au

Data Source Marine Parks, NPWSA, Topographic Data - DEWNR
 DCDB - DPTI, Crownland Parcels - DEWNR, DPTI
 Aquatic Reserves - PIRSA
 4 December 2012

Compiled Projection Datum
 Geographic
 Geocentric Datum of Australia, 1994

© Copyright Department of Environment, Water and Natural Resources 2012. All Rights Reserved. All works and information displayed are subject to Copyright. For the reproduction or publication beyond that permitted by the Copyright Act 1968 (Cwth) written permission must be sought from the Department.

Although every effort has been made to ensure the accuracy of the information displayed, the Department, its agents, officers and employees make no representations, either express or implied, that the information displayed is accurate or fit for any purpose and expressly disclaims all liability for loss or damage arising from reliance upon the information displayed.

