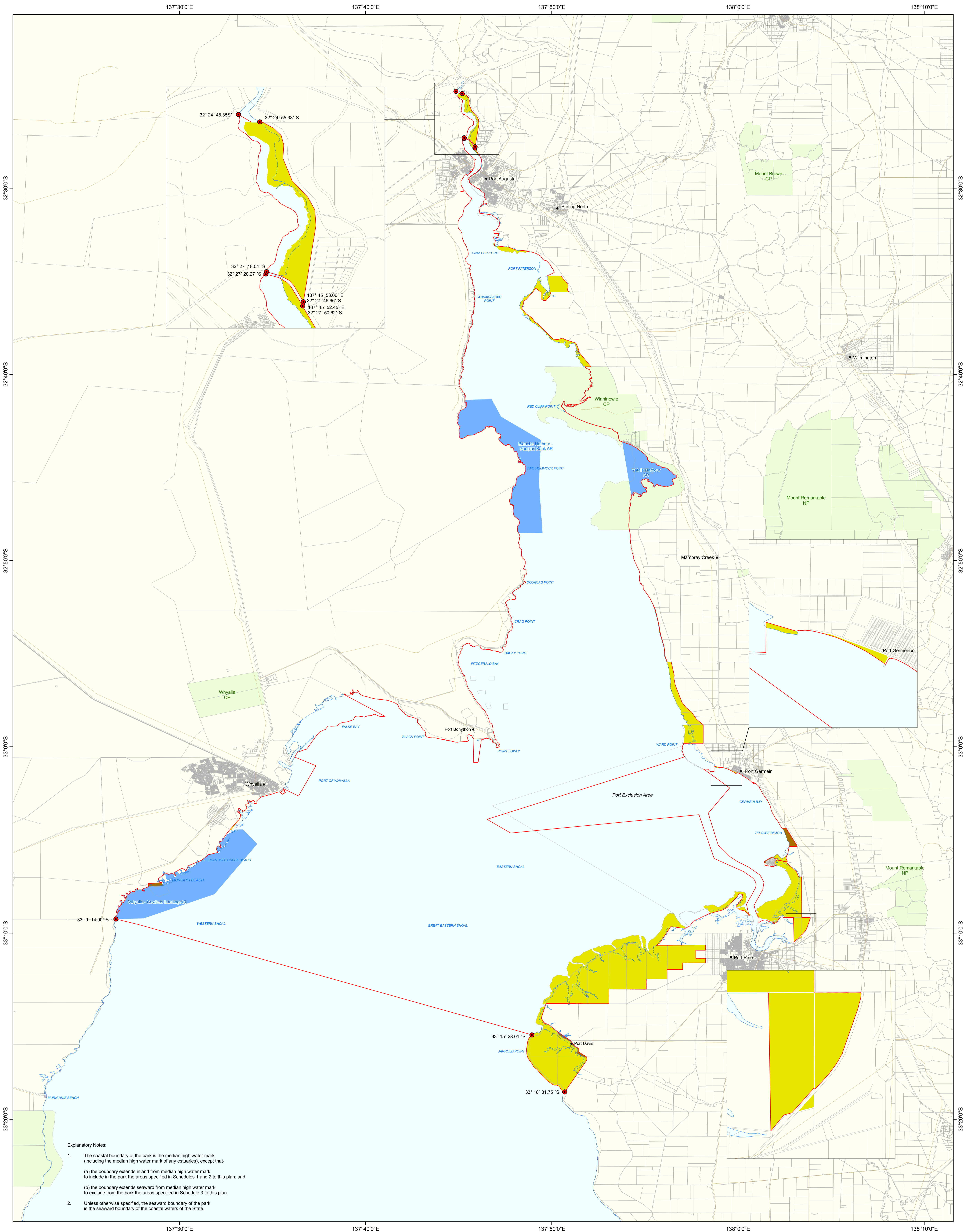


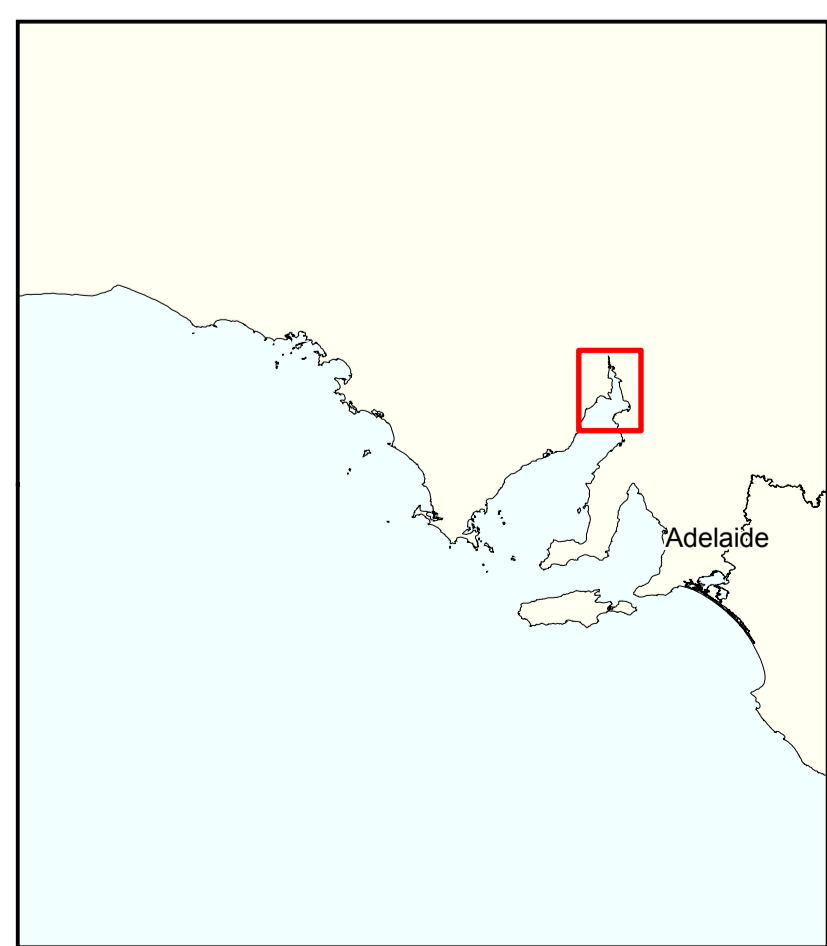
Upper Spencer Gulf Marine Park

Rack Plan 938

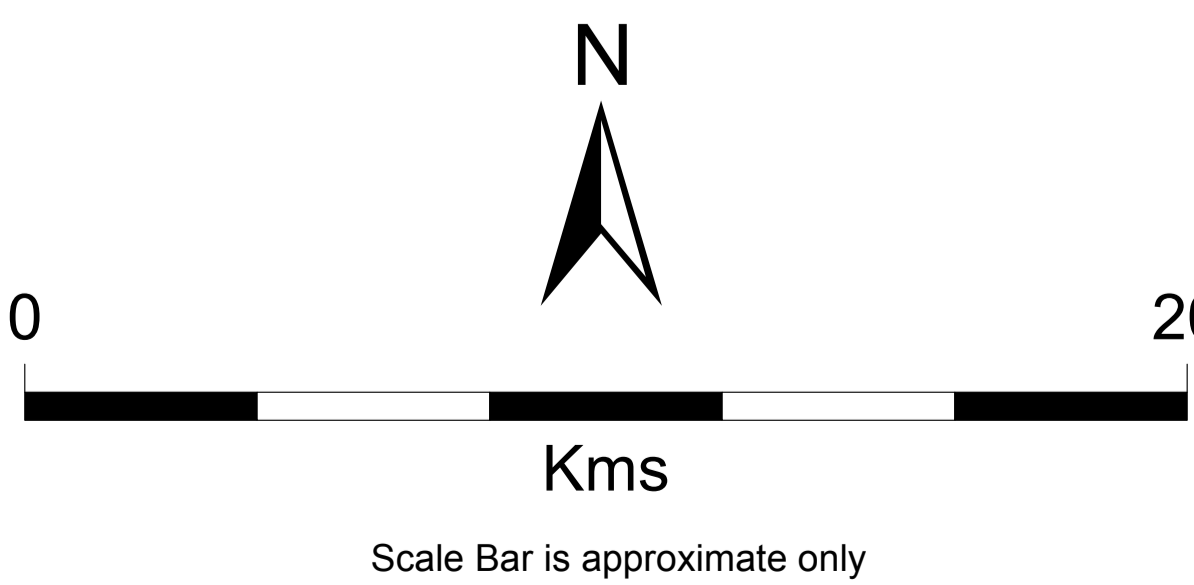


Explanatory Notes:

1. The coastal boundary of the park is the median high water mark (including the median high water mark of any estuaries), except that:  
(a) the boundary extends inland from median high water mark to include in the park the areas specified in Schedules 1 and 2 to this plan; and  
(b) the boundary extends seaward from median high water mark to exclude from the park the areas specified in Schedule 3 to this plan.
2. Unless otherwise specified, the seaward boundary of the park is the seaward boundary of the coastal waters of the State.



- Marine Park Boundaries
- Terrestrial Parks and Reserves
- Coastal Crown Lands Act Reserves
- Coastal Crown Land Unallotted
- Aquatic Reserves
- DCDB Parcels
- Coastline (median high water)
- Roads



**Produced by** Marine Parks Project  
Department of Environment and Natural Resources  
GPO BOX 1047 Adelaide SA 5001  
[www.marineparks.sa.gov.au](http://www.marineparks.sa.gov.au)

**Data Source** Marine Parks, NPWSA, Topographic Data - DENR  
DCDB - DTEI, Crownland Parcels - DENR, DTEI  
Aquatic Reserves - PIRSA  
5 July 2012

**Compiled Projection Datum** Geographic  
Geocentric Datum of Australia, 1994

© Copyright Department of Environment and Natural Resources 2012.  
All Rights Reserved. All works and information displayed are subject to Copyright. For the reproduction or publication beyond that permitted by the Copyright Act 1968 (Cwth) written permission must be sought from the Department.

Although every effort has been made to ensure the accuracy of the information displayed, the Department, its agents, officers and employees make no representations, either express or implied, that the information displayed is accurate or fit for any purpose and expressly disclaims all liability for loss or damage arising from reliance upon the information displayed.

