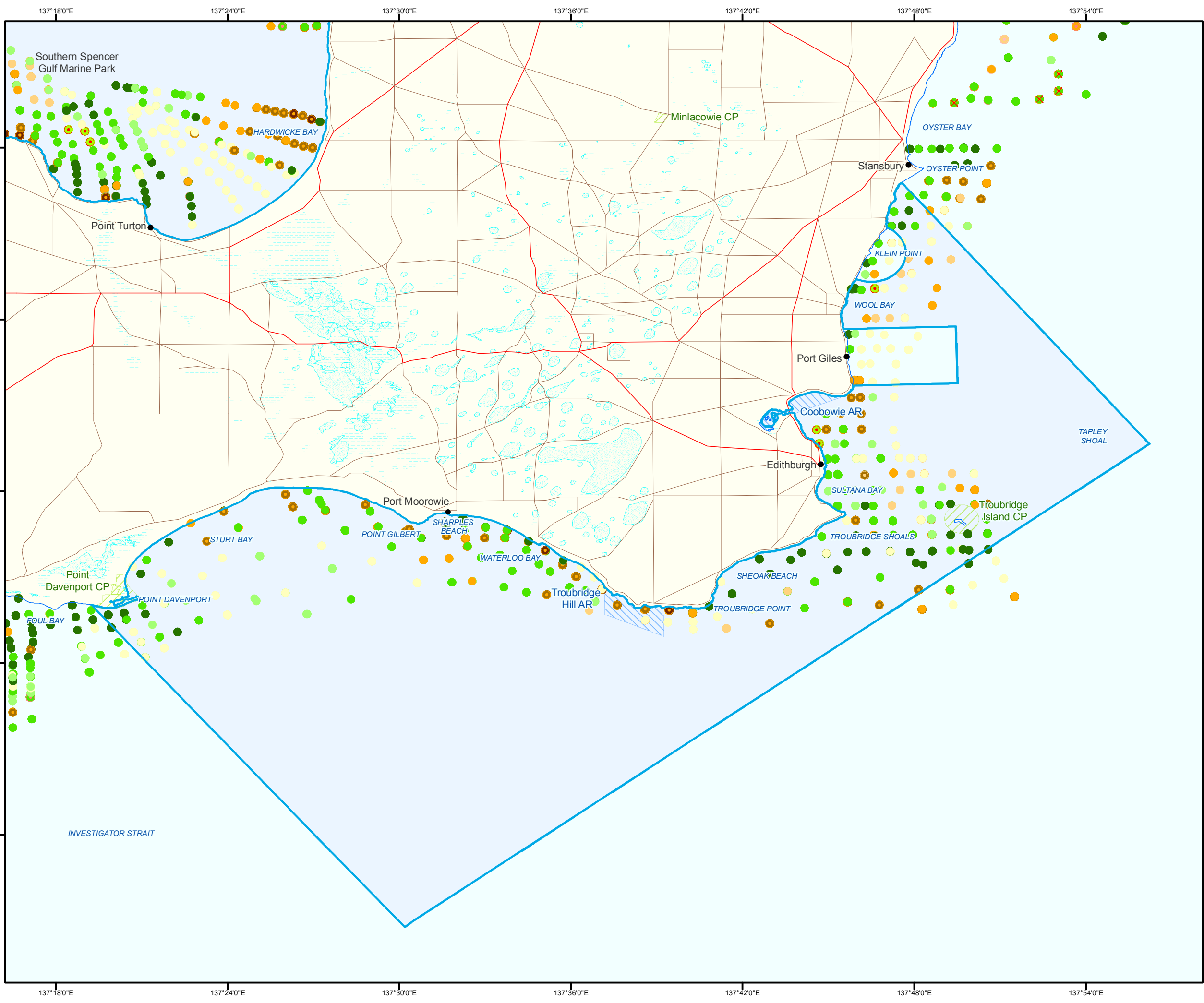
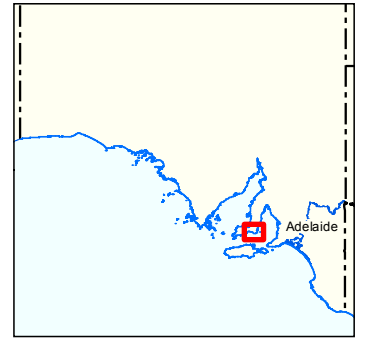
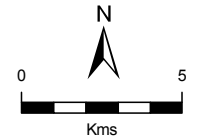


**Figure 5C: Lower Yorke Peninsula**  
State Benthic Habitats Video Points



- Marine Parks
- Lake - Perennial
- Lake - Intermittent
- Land Subject to Inundation (STI)
- Parks and Reserves
- Aquatic Reserves
- Coastline (median high water)
- Major Road
- Minor Road
- Algae and invertebrates; Medium
- Algae and invertebrates; Sparse
- Algae; Medium
- Algae; Sparse
- Reef; Low profile
- Reef; Macroalgae; Low profile
- Reef; Macroalgae; Medium/high profile
- Seagrass and algae; Medium
- Seagrass and invertebrates
- Seagrass, algae and invertebrates
- Seagrass; Dense
- Seagrass; Medium
- Seagrass; Sparse
- Unconsolidated bare substrate



**Produced by** Coast and Marine Conservation  
Department for Environment and Heritage  
GPO Box 1047 Adelaide SA 5001  
[www.marineparks.sa.gov.au](http://www.marineparks.sa.gov.au)  
Marine Parks, Parks and Reserves,  
Topographic Data - DEH  
Benthic Habitat Video Mapping - DEH and NY NRM  
Aquatic Reserves - PIRSA  
11 August 2010

**Compiled** Geographic

**Datum** Geocentric Datum of Australia, 1994

© Copyright Department for Environment and Heritage 2010.  
All Rights Reserved. All works and information displayed are subject to Copyright. For the reproduction or publication beyond that permitted by the Copyright Act 1968 (Cwth) written permission must be sought from the Department.  
Although every effort has been made to ensure the accuracy of the information displayed, the Department, its agents, officers and employees make no representations, either express or implied, that the information displayed is accurate or fit for any purpose and expressly disclaims all liability for loss or damage arising from reliance upon the information displayed.

