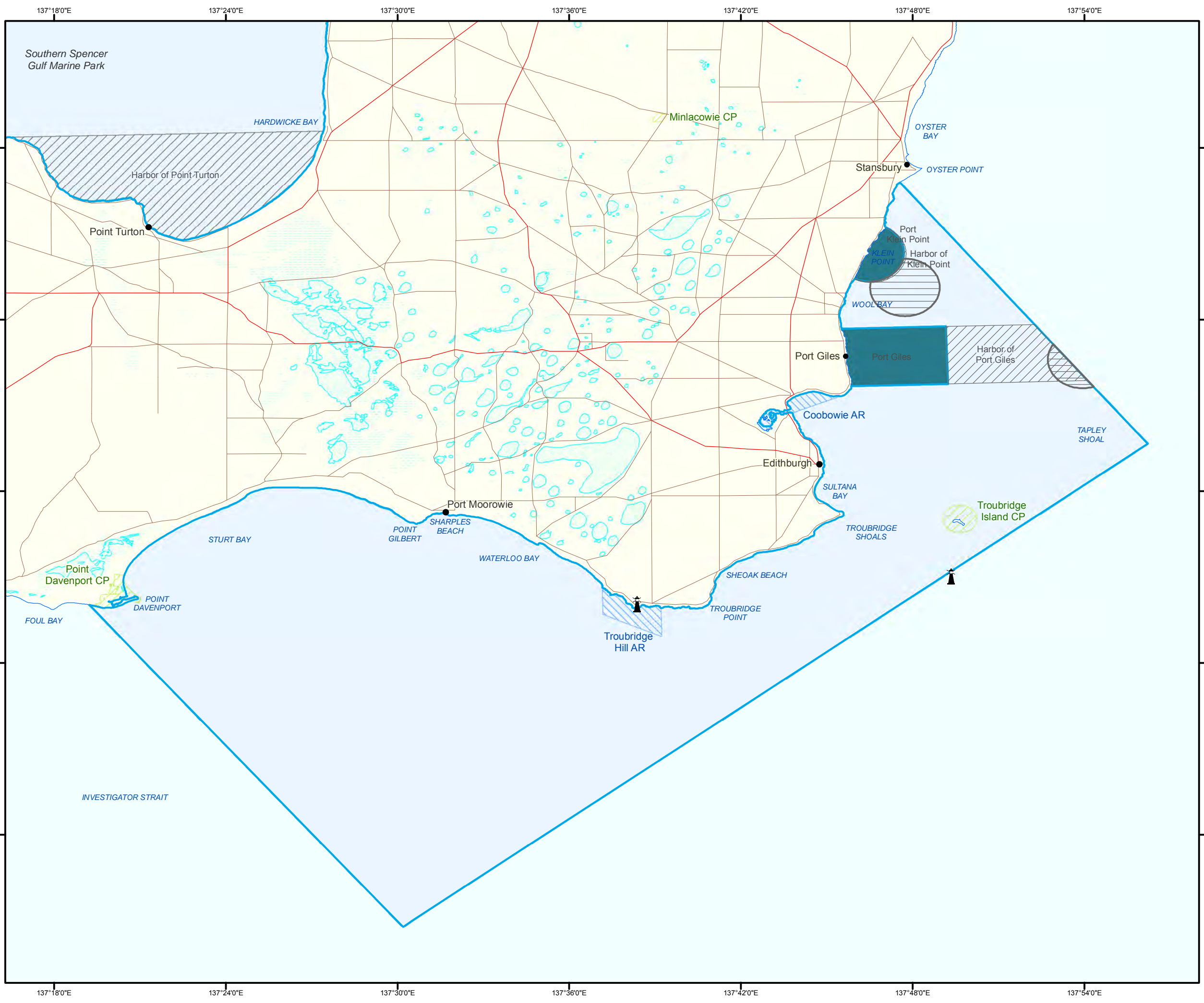
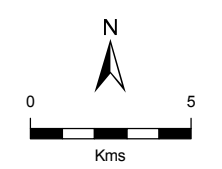


Figure 20: Lower Yorke Peninsula
Shipping Infrastructure



- Port
- Harbour
- Actual Anchorage Location
- Marine Parks
- Lake - Perennial
- Lake - Intermittent
- Land Subject to Inundation (STI)
- Parks and Reserves
- Aquatic Reserves
- Coastline (median high water)
- Major Road
- Minor Road
- Lighthouse



Produced by Coast and Marine Conservation
Department of Environment and Natural Resources
GPO BOX 1047 Adelaide SA 5001
www.marineparks.sa.gov.au

Data Source Marine Parks, Special Purpose Areas, Parks and Reserves, Lighthouse, Topographic Data – DENR
Port and Harbors - DENR and Harbors Navigation Act
Transportation & Anchorage Locations - Flinders Ports
Aquatic Reserves – PIRSA

Compiled 6 December 2011
Projection Geographic
Datum Geocentric Datum of Australia, 1994

© Copyright Department of Environment and Natural Resources 2011. All Rights Reserved. All works and information displayed are subject to Copyright. For the reproduction or publication beyond that permitted by the Copyright Act 1968 (Cwth) written permission must be sought from the Department.

Although every effort has been made to ensure the accuracy of the information displayed, the Department, its agents, officers and employees make no representations, either express or implied, that the information displayed is accurate or fit for any purpose and expressly disclaims all liability for loss or damage arising from reliance upon the information displayed.

