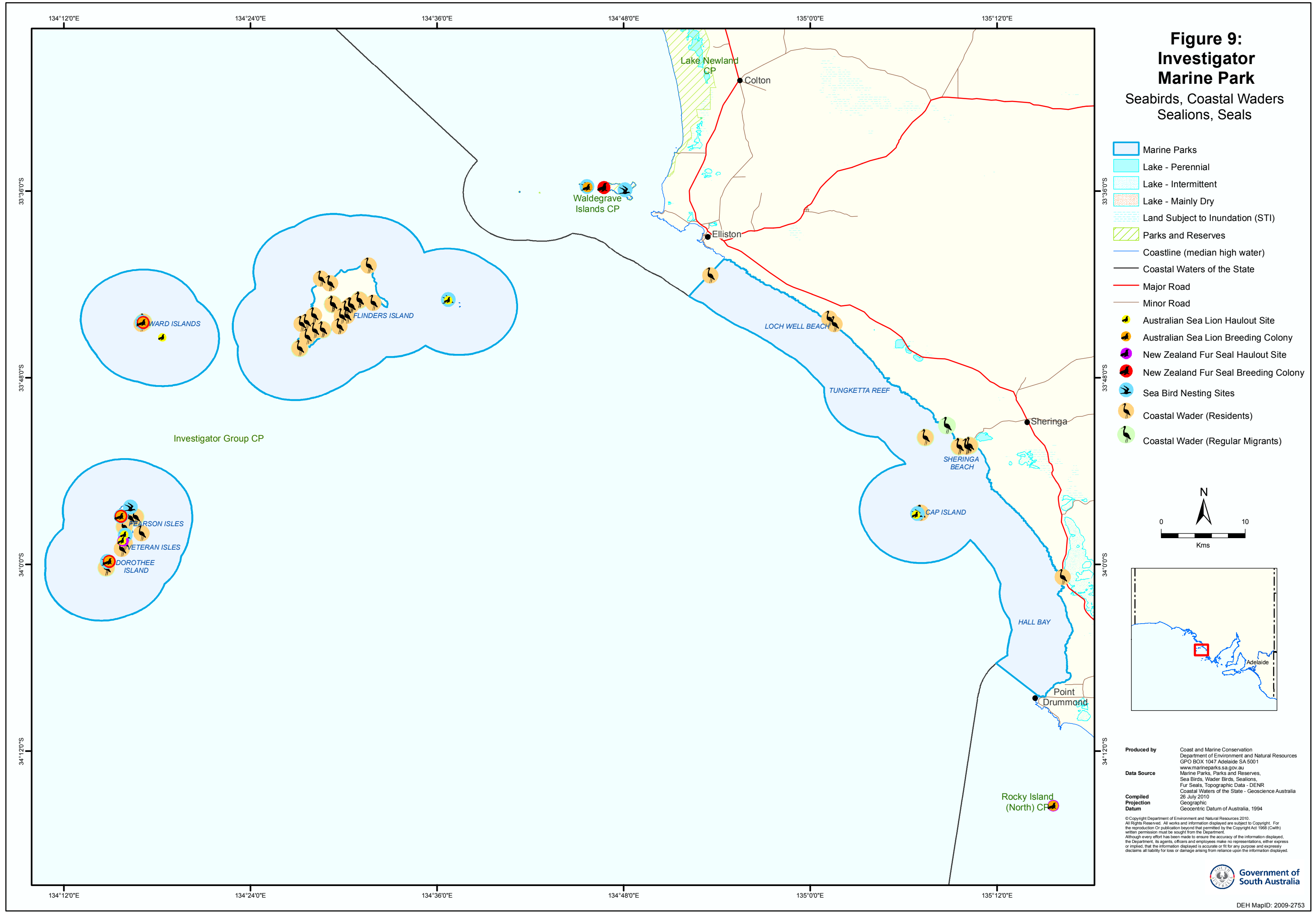
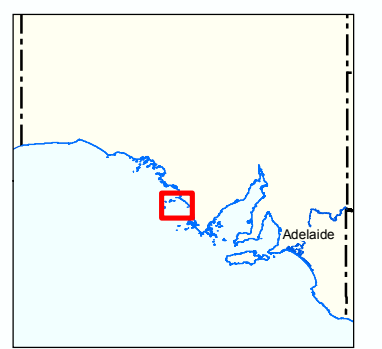
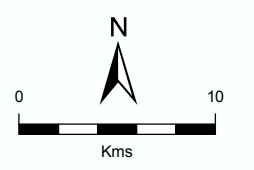


**Figure 9:
Investigator
Marine Park**
Seabirds, Coastal Waders
Sealions, Seals



- Marine Parks
- Lake - Perennial
- Lake - Intermittent
- Lake - Mainly Dry
- Land Subject to Inundation (STI)
- Parks and Reserves
- Coastline (median high water)
- Coastal Waters of the State
- Major Road
- Minor Road
- Australian Sea Lion Haulout Site
- Australian Sea Lion Breeding Colony
- New Zealand Fur Seal Haulout Site
- New Zealand Fur Seal Breeding Colony
- Sea Bird Nesting Sites
- Coastal Wader (Residents)
- Coastal Wader (Regular Migrants)



Produced by Coast and Marine Conservation
Department of Environment and Natural Resources
GPO BOX 1047 Adelaide SA 5001
www.marineparks.sa.gov.au

Data Source Marine Parks, Parks and Reserves,
Sea Birds, Wader Birds, Sealions,
Fur Seals, Topographic Data - DENR
Coastal Waters of the State - Geoscience Australia
26 July 2010

Compiled Projection Datum Geographic
Geocentric Datum of Australia, 1994

© Copyright Department of Environment and Natural Resources 2010.
All Rights Reserved. All works and information displayed are subject to Copyright. For the reproduction or publication beyond that permitted by the Copyright Act 1968 (Cwth) written permission must be sought from the Department.
Although every effort has been made to ensure the accuracy of the information displayed, the Department, its agents, officers and employees make no representations, either express or implied, that the information displayed is accurate or fit for any purpose and expressly disclaims all liability for loss or damage arising from reliance upon the information displayed.

