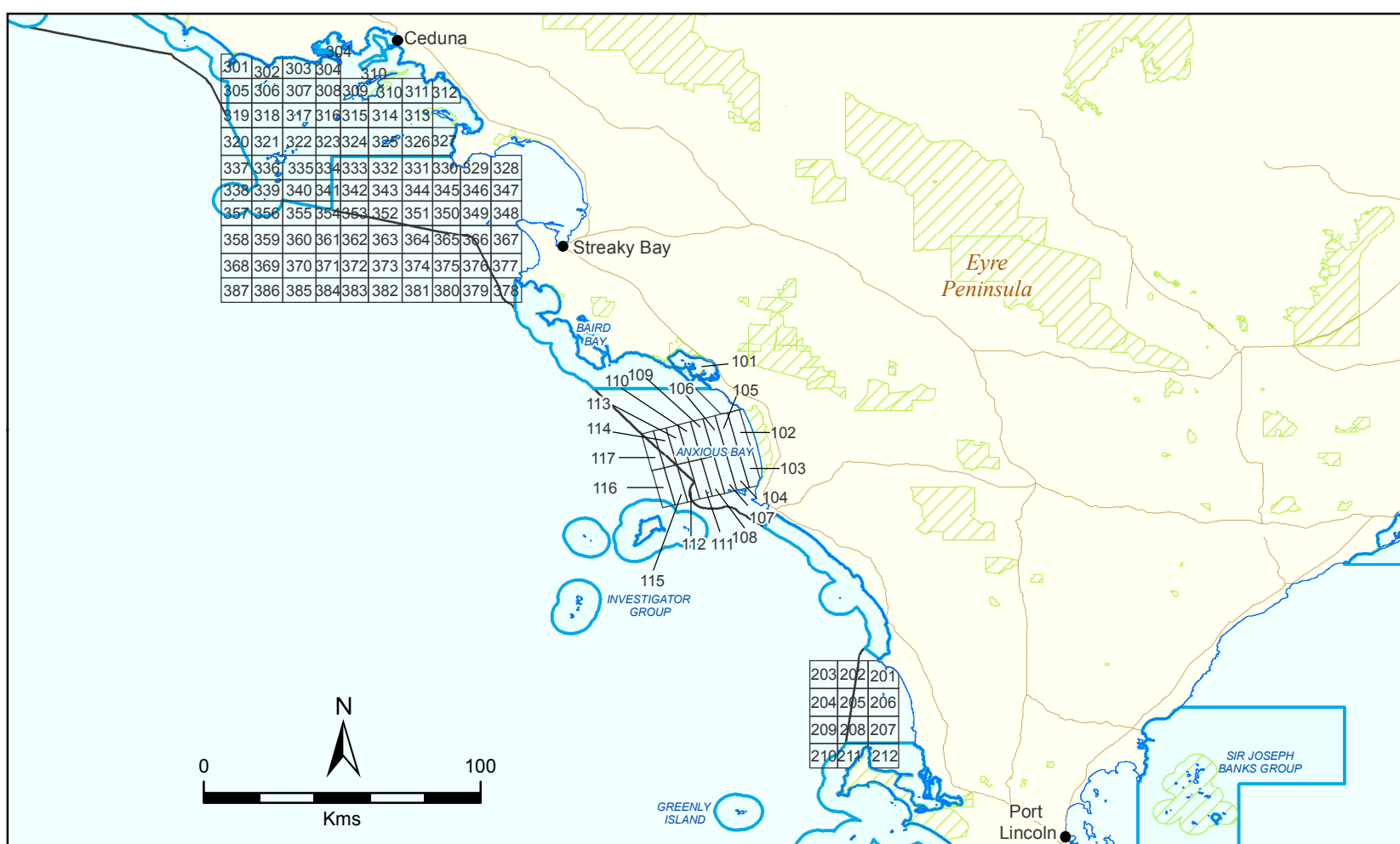
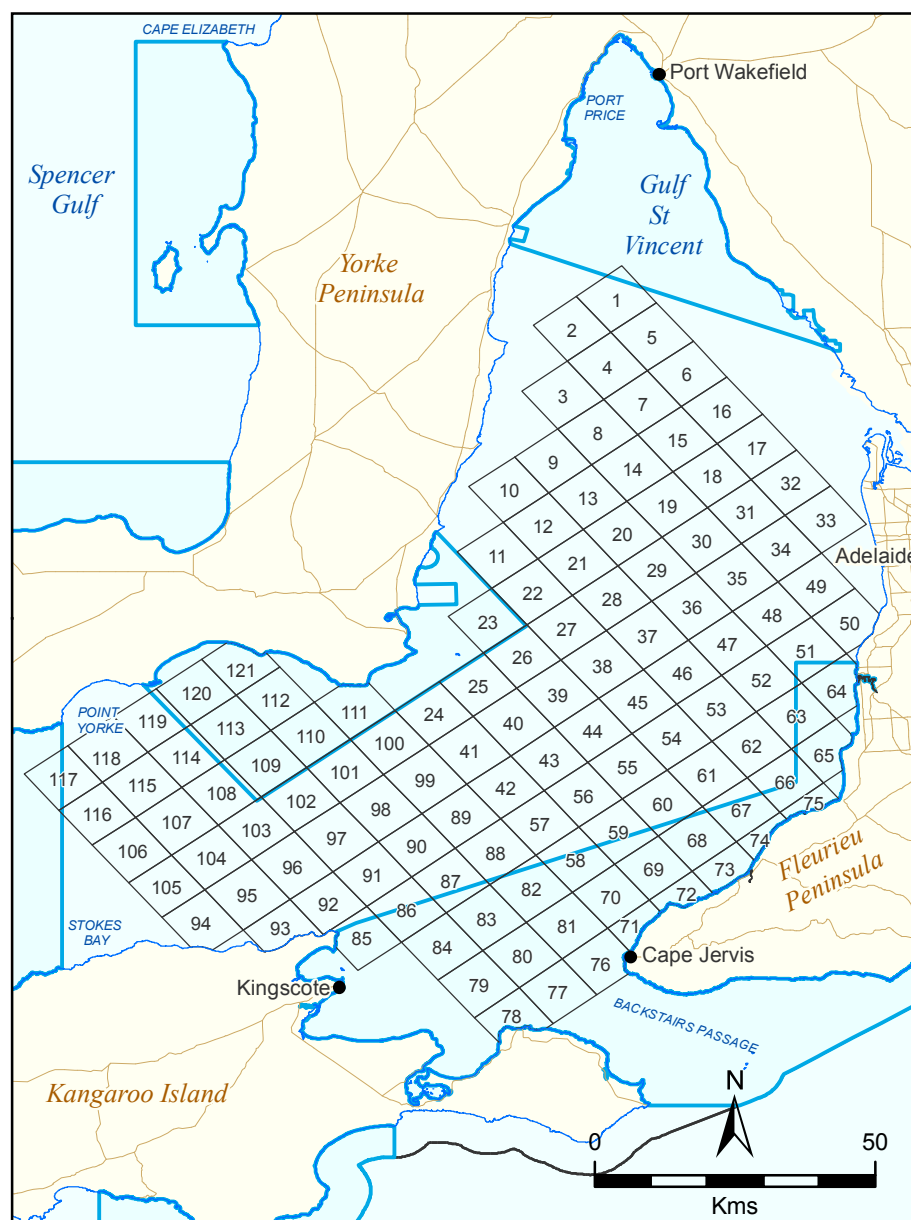
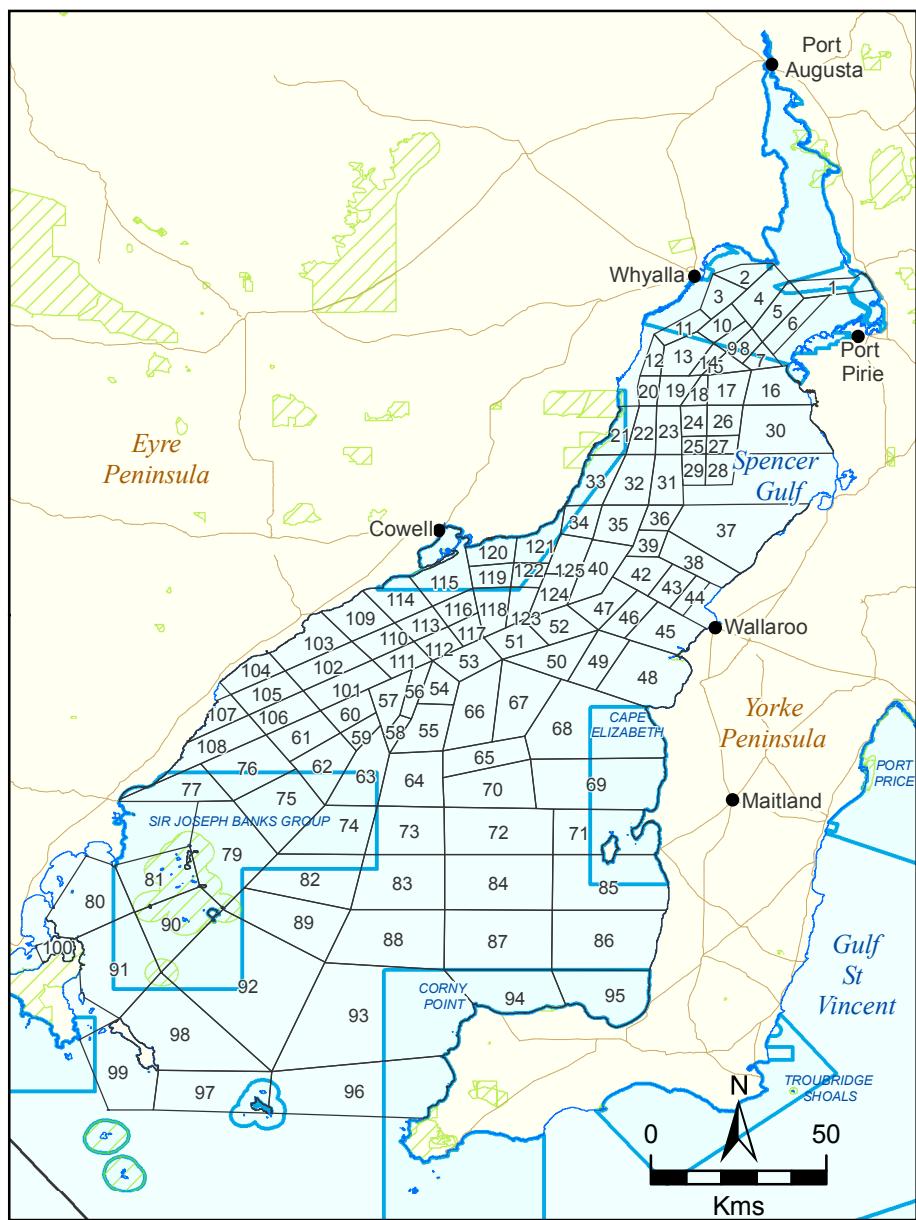


# Figure 27: South Australia's Marine Parks

## Commercial Fishing - Prawns



- Marine Parks
- Parks and Reserves
- Block Number
- Coastline (median high water)
- Coastal Waters of the State

**Produced by** Coast & Marine Conservation Branch  
Department for Environment and Heritage  
GPO Box 1047 Adelaide 5001  
[www.marineparks.sa.gov.au](http://www.marineparks.sa.gov.au)

**Data Source** Marine Parks, Parks and Reserves, Topographic - DEH  
Coastal Waters of the State - Geoscience Australia  
Prawns - SARDI - PIRSA

**Compiled** 30 August 2010

**Projection** Geographic

**Datum** Geocentric Datum of Australia, 1994

© Copyright Department for Environment and Heritage 2010. All Rights Reserved. All works and information displayed are subject to Copyright. For the reproduction or publication beyond that permitted by the Copyright Act 1968 (Cwth) written permission must be sought from the Department.

Although every effort has been made to ensure the accuracy of the information displayed, the Department, its agents, officers and employees make no representations, either express or implied, that the information displayed is accurate or fit for any purpose and expressly disclaims all liability for loss or damage arising from reliance upon the information displayed.