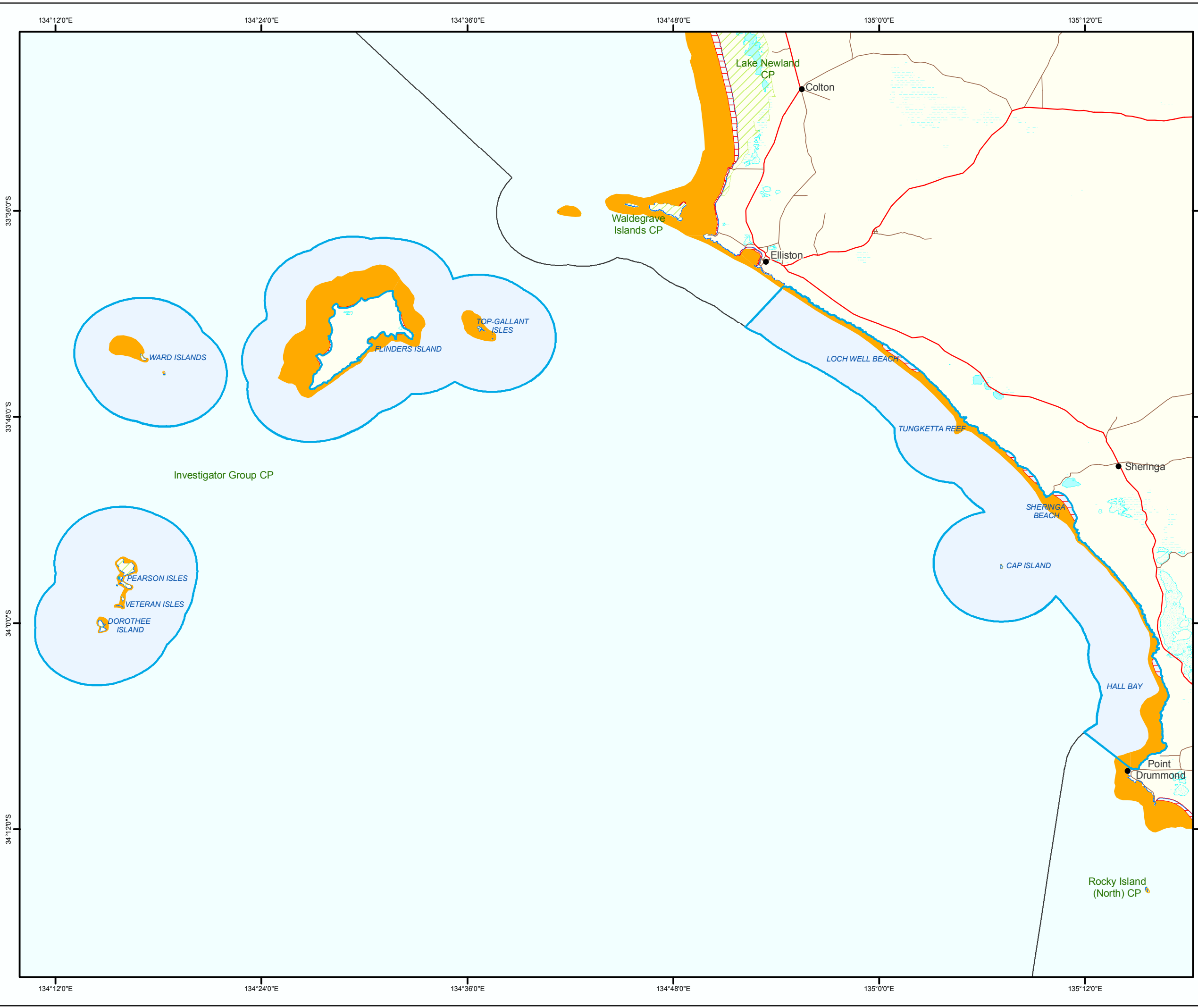
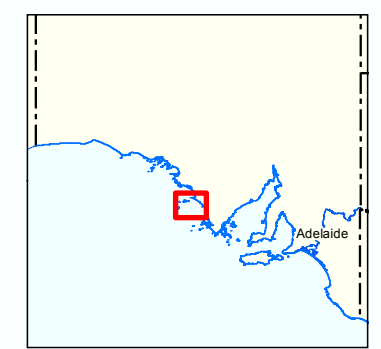
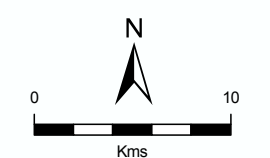


# Figure 12A: Investigator Marine Park

## Fish Habitat Breeding, Spawning and Nursery for Commercial and Recreational Fisheries



- Marine Parks
- Breeding, Spawning and Nursery
- Breeding, Spawning
- Spawning and Nursery
- Lake - Perennial
- Lake - Intermittent
- Lake - Mainly Dry
- Land Subject to Inundation (STI)
- Parks and Reserves
- Coastline (median high water)
- Coastal Waters of the State
- Major Road
- Minor Road



**Produced by** Coast and Marine Conservation  
Department of Environment and Natural Resources  
GPO BOX 1047 Adelaide SA 5001  
www.marineparks.sa.gov.au

**Data Source** Marine Parks, Parks and Reserves,  
Fish Habitats, Topographic Data - DENR  
Coastal Waters of the State - Geoscience Australia  
12 August 2010

**Compiled Projection Datum** Geographic  
Geocentric Datum of Australia, 1994

© Copyright Department of Environment and Natural Resources 2010.  
All Rights Reserved. All works and information displayed are subject to Copyright. For the reproduction or publication beyond that permitted by the Copyright Act 1968 (Cwth) written permission must be sought from the Department.  
Although every effort has been made to ensure the accuracy of the information displayed, the Department, its agents, officers and employees make no representations, either express or implied, that the information displayed is accurate or fit for any purpose and expressly disclaims all liability for loss or damage arising from reliance upon the information displayed.

