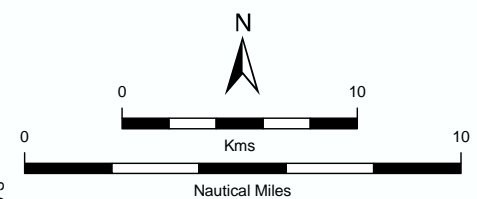


Marine Park 4 Investigator Marine Park

Final MPLAG Zoning
Advice from Meeting
held 3/5/2011

- Zoning Advice**
- Sanctuary Zones**
- Unanimous Support
 - Majority Support
 - Minority Support
 - Marine Park
 - Lake - Perennial
 - Lake - Intermittent
 - Lake - Mainly Dry
 - Land Subject to Inundation (STI)
 - Parks and Reserves
 - Bathymetry
 - Coastline (median high water)
 - Coastal Waters of the State
 - Major Road
 - Minor Road

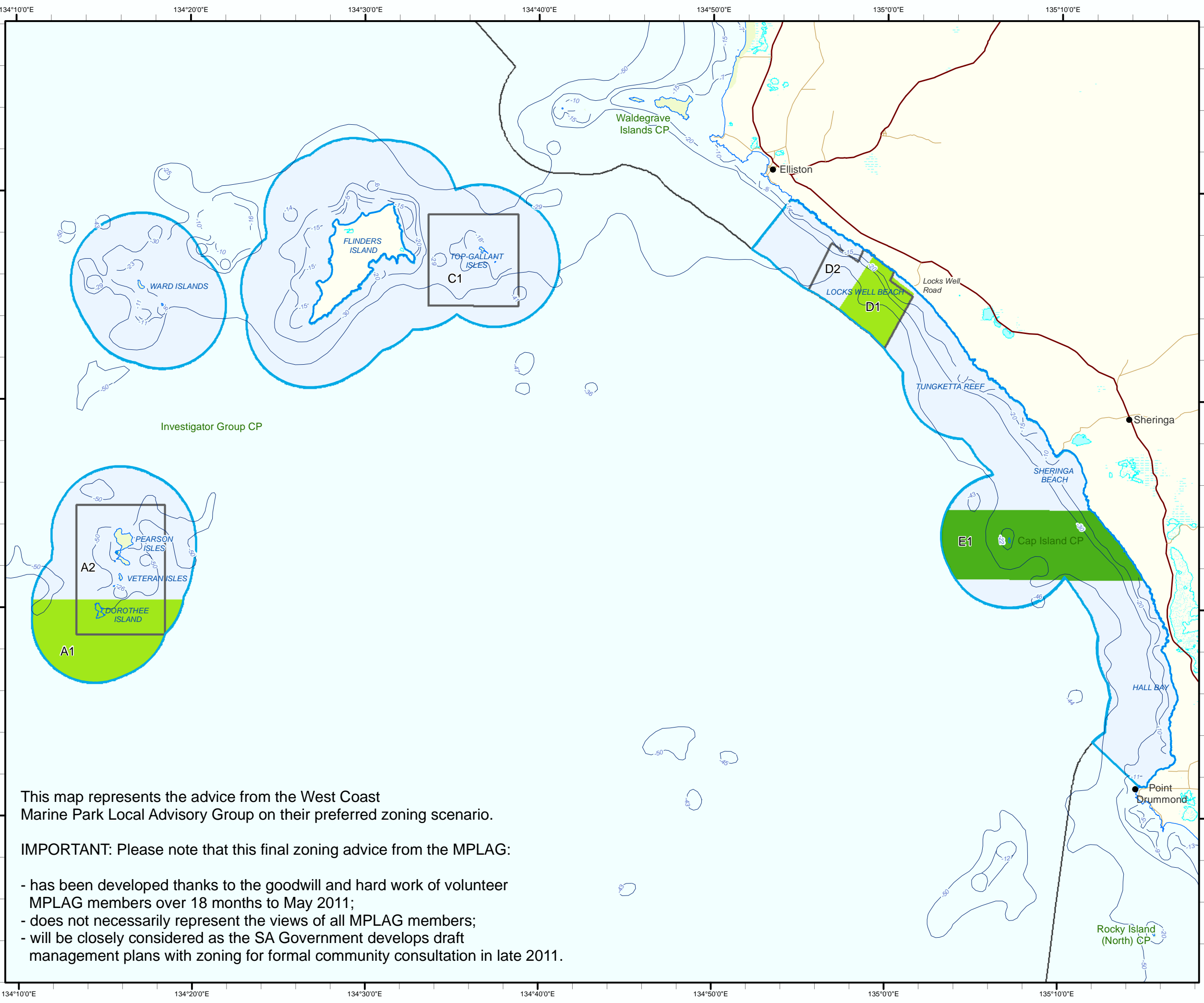


Produced by Marine Parks Project
Department of Environment and Natural Resources
GPO BOX 1047 Adelaide SA 5001
www.marineparks.sa.gov.au

Data Source Marine Parks, Parks and Reserves,
Topographic Data, Bathymetry - DENR
Coastal Waters of the State - Geoscience Australia

Compiled 15 June 2011
Projection Lambert Conformal Conic
Datum Geocentric Datum of Australia, 1994

© Copyright Department of Environment and Natural Resources 2011. All Rights Reserved. All works and information displayed are subject to Copyright. For the reproduction or publication beyond that permitted by the Copyright Act 1968 (Cwth) written permission must be sought from the Department. Although every effort has been made to ensure the accuracy of the information displayed, the Department, its agents, officers and employees make no representations, either express or implied, that the information displayed is accurate or fit for any purpose and expressly disclaims all liability for loss or damage arising from reliance upon the information displayed.



This map represents the advice from the West Coast Marine Park Local Advisory Group on their preferred zoning scenario.

IMPORTANT: Please note that this final zoning advice from the MPLAG:

- has been developed thanks to the goodwill and hard work of volunteer MPLAG members over 18 months to May 2011;
- does not necessarily represent the views of all MPLAG members;
- will be closely considered as the SA Government develops draft management plans with zoning for formal community consultation in late 2011.