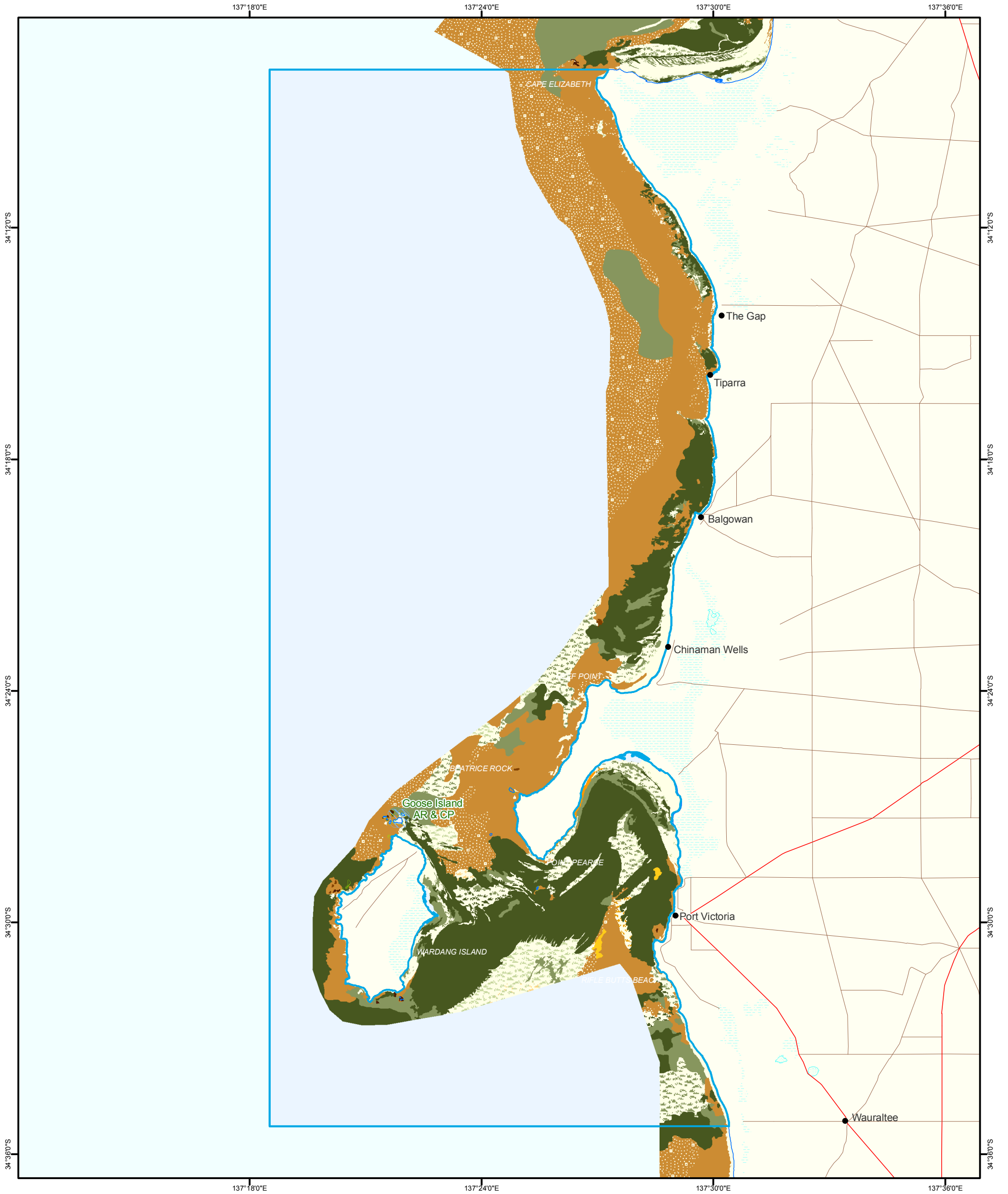
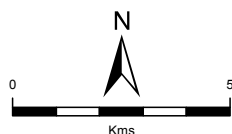


Figure 5B : Eastern Spencer Gulf Marine Park
State Benthic Habitats



- | | | |
|--------------------------------|---------------------------------|----------------------------------|
| Patchy, Sparse, Macroalgae | Patchy, Low Profile Reef | Marine Parks |
| Patchy, Dense, Macroalgae | Continuous, Low Profile Reef | Parks and Reserves |
| Continuous, Medium, Macroalgae | Continuous, Medium Profile Reef | Aquatic Reserves |
| Continuous, Dense, Macroalgae | Continuous, High Profile Reef | Lake - Intermittent |
| Patchy, Sparse, Seagrass | Cobble | Land Subject to Inundation (STI) |
| Patchy, Medium, Seagrass | Unconsolidated Bare Substrate | Coastline (median high water) |
| Patchy, Dense, Seagrass | | Major Road |
| Continuous, Medium, Seagrass | | Minor Road |
| Continuous, Dense, Seagrass | | |



Produced by Coast and Marine Conservation
Department for Environment and Heritage
GPO BOX 1047 Adelaide SA 5001
www.marineparks.sa.gov.au

Data Source Marine Parks, Parks and Reserves,
Topographic Data - DEH
Aquatic Reserves - PIRSA
Benthic Habitat Mapping - DEH, Northern and Yorke NRM
12 August 2010
Geographic
Geocentric Datum of Australia, 1994

**Compiled
Projection
Datum**

© Copyright Department for Environment and Heritage 2010.
All Rights Reserved. All works and information displayed are subject to Copyright. For
the reproduction or publication beyond that permitted by the Copyright Act 1968 (Cwth)
written permission must be sought from the Department.
Although every effort has been made to ensure the accuracy of the information displayed,
the Department, its agents, officers and employees make no representations, either express
or implied, that the information displayed is accurate or fit for any purpose and expressly
disclaims all liability for loss or damage arising from reliance upon the information displayed.

